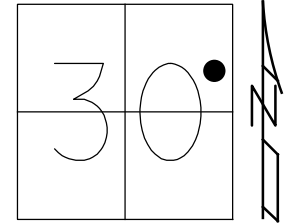


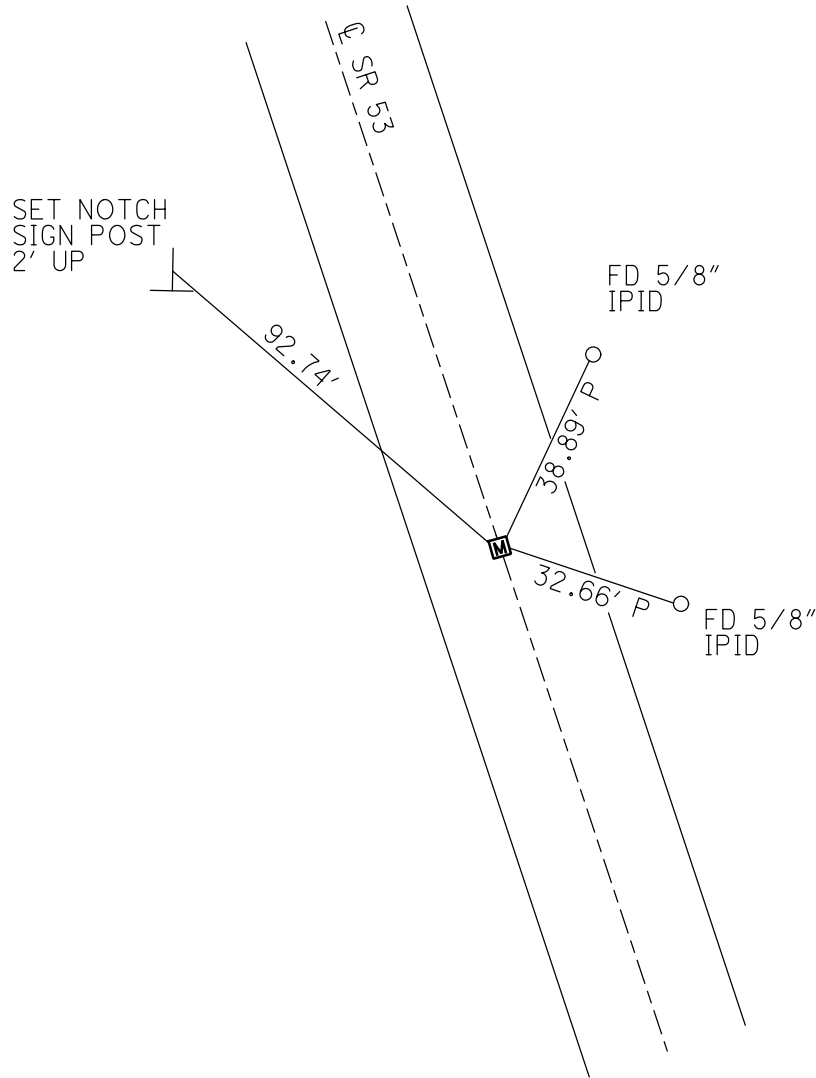
O.D.O.T. DISTRICT 2 SURVEY OFFICE (USE ONLY)

PERSONNEL _____ REFERENCE NO. 6 SHEET 6 OF 25
 NOTES RHOADES DATE 6/1/20 ROUTE SR 53
 H.C. O'DONNELL WEATHER SUNNY COUNTY SANDUSKY
 R.C. LEU TEMP. 70° TOWNSHIP BALLVILLE
 SECTION 30
 DWG BY O'DONNELL PID 101277 T 4 N R 5 E

TYPE MONUMENT MONBOX W/ 1" IPIN
 ON SURFACE - ~~BELOW~~ ON
 LEFT - ☉ PAV'T - RIGHT ON
12.3' TO RT EDGE PAVEMENT
 STATION: 97+75.38



HORZ.DATUM: NAD83 (2011) GEOID: 2012A
 GRID: NORTHING: 589273.049 EASTING: 1784448.122

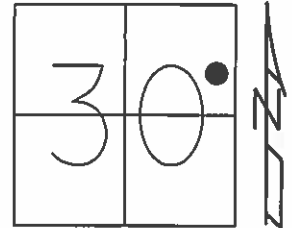


RECORD: P.T.
 FD MONBOX
 SV103
 6/14/10, KPM
 FD MONBOX
 7/6/12, MC
 FD MONBOX
 W/ 1" IPIN
 REF6
 6/1/20
 3/31/21, JFO

O.D.O.T. DISTRICT 2 SURVEY OFFICE (USE ONLY)

PERSONNEL _____ REFERENCE NO. 6 SHEET 6 OF 25
NOTES CANTERBURY DATE 7/6/12 ROUTE SR 53
H.C. HUSS WEATHER SUNNY COUNTY SANDUSKY
R.C. COUTCHER TEMP. 84° TOWNSHIP BALLVILLE
SECTION 30
T 4 N R 5 E

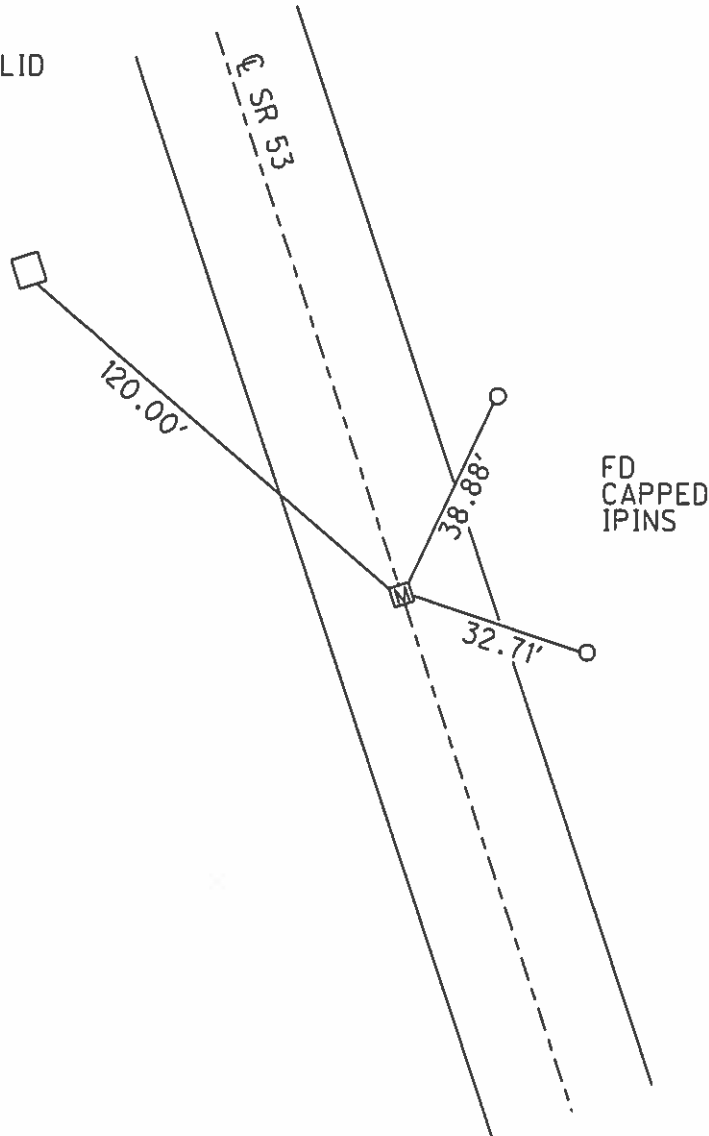
TYPE MONUMENT MON.BOX
ON SURFACE - ~~BELOW~~ ON
LEFT - ☉ PAV'T - RIGHT ON
12.3' TO RT EDGE PAVEMENT
S.L.M. 97+75.38



Grid: Northing: 589273.031 Easting: 1784448.05

RECORD: P.T.
FD MON.BOX, NO LID
GPS, SV103
6/14/10, KPM

SET SHI
4X4" WOOD
POST



PERSONNEL TITLE PERSONNEL TITLE COUNTY Sandusky DATE Feb. 1968
 Mosser S. R. 53 WEATHER
 Barbour SEC. Seneca Co. Line-North TEMP.
 Redding

DESCRIPTION Ties for Control Points JOB NO.

DESCRIPTION	LEFT	CENTER LINE	RIGHT	JOB NO.
P.T. Mon. Box 1.35 + 68.86 27 SURV Kap 4" down young sign				
P.T. 12.0 + 26.00 328 SURV Kap 6" down did not find				
P.T. Mon. Box 103 + 18.86 730.7 SURV Kaps 5" below surface 24" Ash 8" Ash				
P.T. Mon. Box 97 + 77.5 3.2 SURV Kap 6" down 6" Ash				

PERSONNEL TITLE PERSONNEL TITLE

COUNTY Sandusky

DATE

S. R. #53

WEATHER

SEC. B-A

TEMP.

DESCRIPTION

LEFT

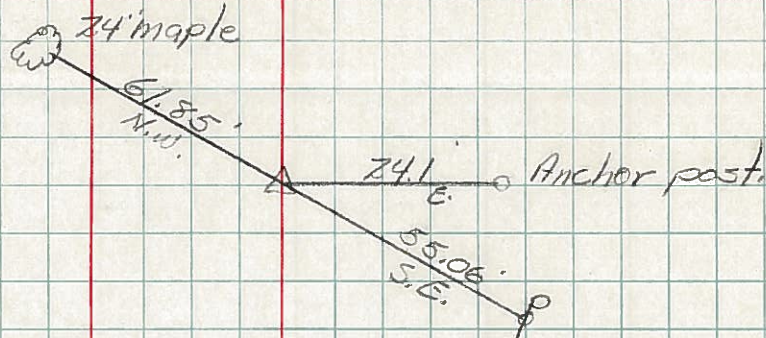
CENTER LINE

RIGHT

JOB NO.

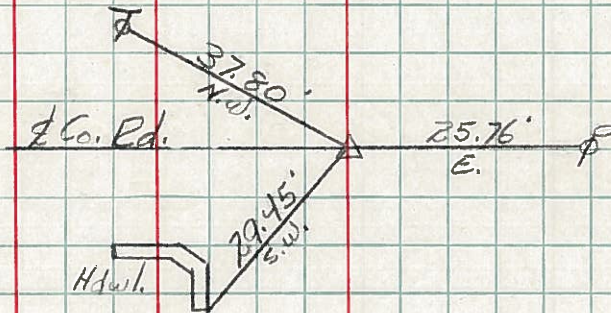
Sta. 80+33
Corner stone

#4



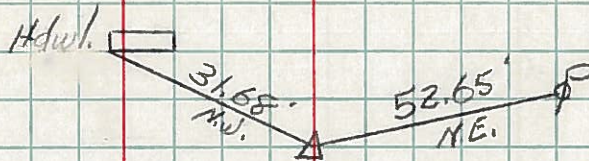
Sta. 92+44.5
Corner stone

#5



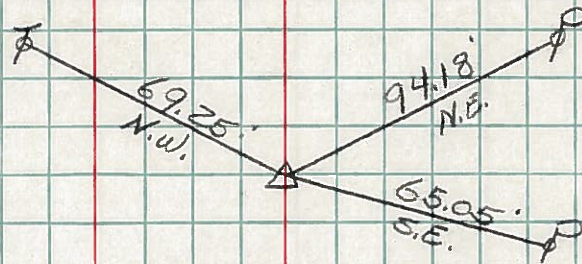
Sta. 102+11.1
Ties to Corner Stone

#6



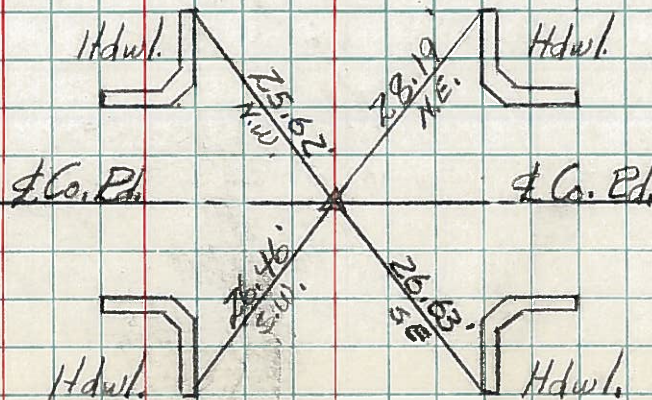
Sta. 115+37.2
Corner Stone

#7



Sta. 155+23
Ties to Corner Stone

#8



End of Sec. "B"