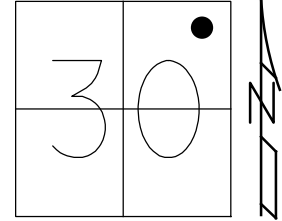


O.D.O.T. DISTRICT 2 SURVEY OFFICE (USE ONLY)

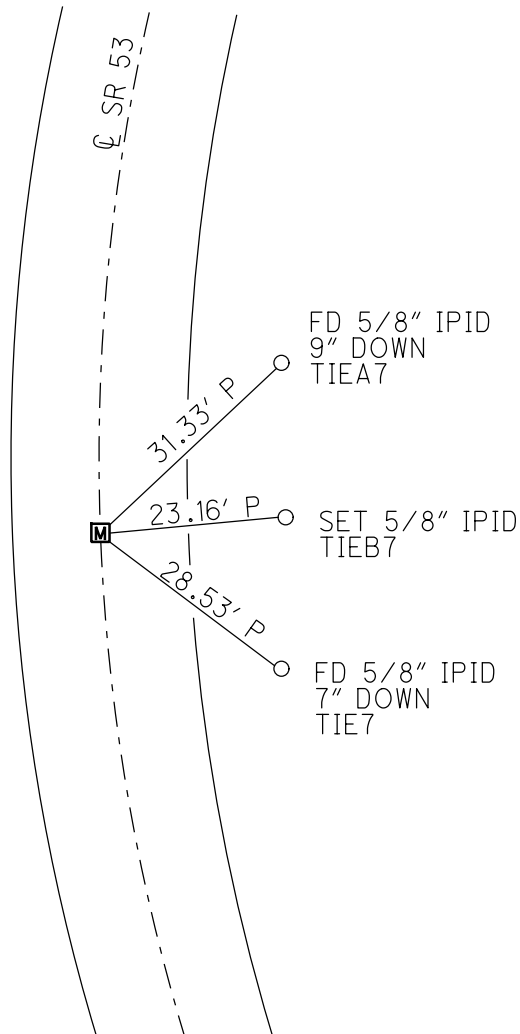
PERSONNEL \_\_\_\_\_ REFERENCE NO. 7 SHEET 7 OF 25  
 NOTES RHOADES DATE 6/3/20 ROUTE SR 53  
 H.C. O'DONNELL WEATHER SUNNY/WINDY COUNTY SANDUSKY  
 R.C. LEU TEMP. 82° TOWNSHIP BALLVILLE  
 SECTION 30  
 DWG BY O'DONNELL PID 101277 T 4 N R 5 E

TYPE MONUMENT MONBOX W/ 1" IPIN  
 ON SURFACE - ~~BELOW~~ ON  
 LEFT - ☉ PAV'T - RIGHT ON  
12.3' TO RT EDGE PAVEMENT  
 STATION: 103+16.18



HORIZ.DATUM: NAD83 (2011) GEOID: 2012A  
 GRID: NORTHING: 589774.944 EASTING: 1784246.805

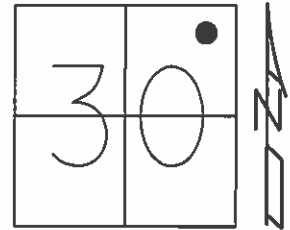
RECORD: P.C.  
 FD MONBOX  
 SV104  
 6/14/10, KPM  
 FD MONBOX  
 7/9/12, MC  
 FD MONBOX  
 W/ 1" IPIN  
 REF7  
 6/3/20  
 NEWREF7  
 2/10/21, JFO



O.D.O.T. DISTRICT 2 SURVEY OFFICE (USE ONLY)

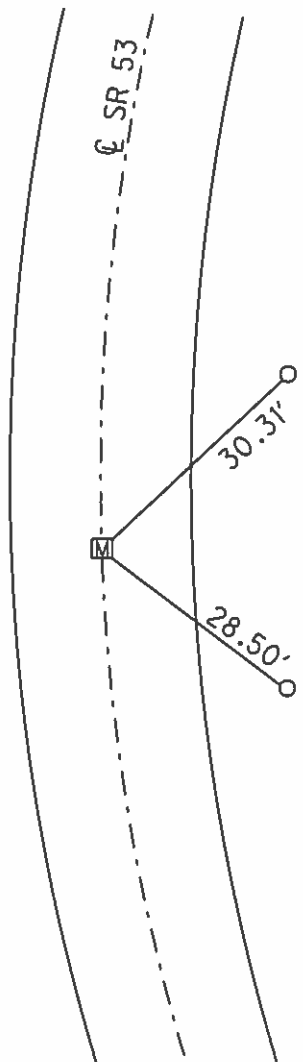
PERSONNEL \_\_\_\_\_ REFERENCE NO. 7 SHEET 7 OF 25  
NOTES CANTERBURY DATE 7/9/12 ROUTE SR 53  
H.C. HUSS WEATHER SUNNY COUNTY SANDUSKY  
R.C. COUTCHER TEMP. 73° TOWNSHIP BALLVILLE  
HARBAUGH SECTION 30  
T 4 N R 5 E

TYPE MONUMENT MON.BOX  
ON SURFACE - ~~BELOW~~ ON  
LEFT - Q PAV'T - RIGHT ON  
12.3' TO RT EDGE PAVEMENT  
S.L.M. 103+16.18



Grid: Northing: 589774.959 Easting: 1784246.710

RECORD: P.C.  
FD MON.BOX, NO LID  
GPS, SV104  
6/14/10, KPM



FD  
CAPPED  
IPINS

PERSONNEL TITLE PERSONNEL TITLE  
 Schneider \_\_\_\_\_  
 Mosser \_\_\_\_\_  
 Barbour \_\_\_\_\_  
 Redding \_\_\_\_\_

COUNTY Sandusky DATE Feb. 1968

S. R. 53 WEATHER \_\_\_\_\_

SEC. Seneca Co. Line-North TEMP. \_\_\_\_\_

DESCRIPTION Ties for Control Points JOB NO. \_\_\_\_\_

	LEFT	CENTER LINE	RIGHT
P.T. Mon. Box 1.35 + 68.86 7327 Surv Kap 4" down young sign			
P.I. 12.0 + 26.00 7328 did not find			
P.C. Mon. Box 103 + 18.86 7327			
P.T. Mon. Box 97 + 77.5 7326			

PERSONNEL TITLE PERSONNEL TITLE

COUNTY Sandusky

DATE

S. R. #53

WEATHER

SEC. B-A

TEMP.

DESCRIPTION

LEFT

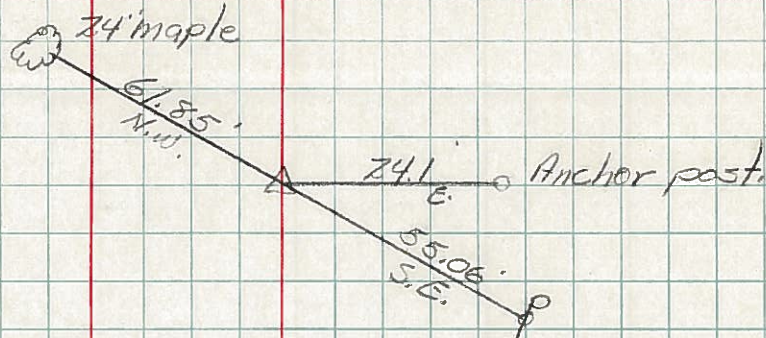
CENTER LINE

RIGHT

JOB NO.

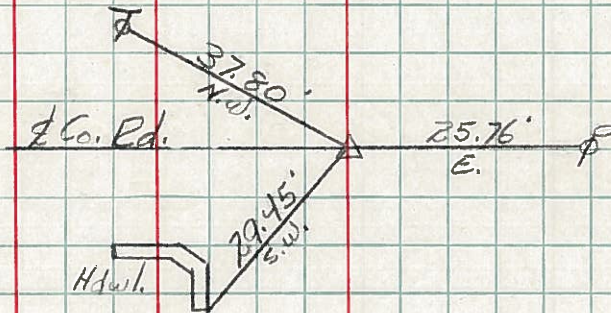
Sta. 80+33  
Corner stone

#4



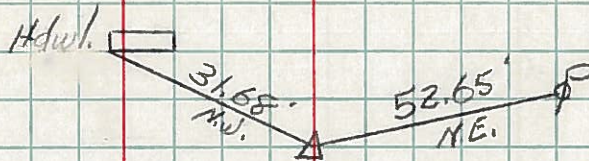
Sta. 92+44.5  
Corner stone

#5



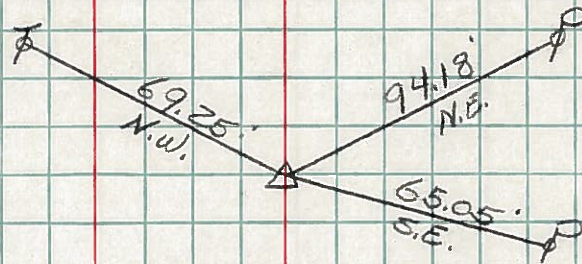
Sta. 102+11.1  
Ties to Corner Stone

#6



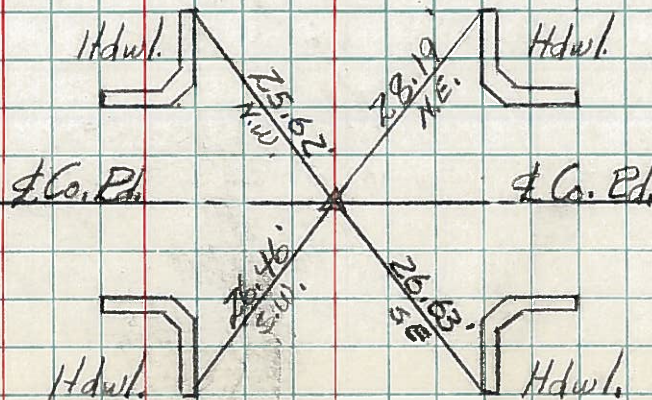
Sta. 115+37.2  
Corner Stone

#7



Sta. 155+23  
Ties to Corner Stone

#8



End of Sec. "B"