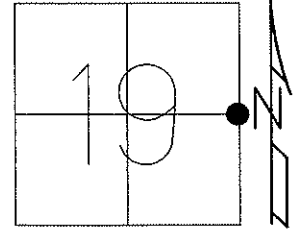


O.D.O.T. DISTRICT 2 SURVEY OFFICE (USE ONLY)

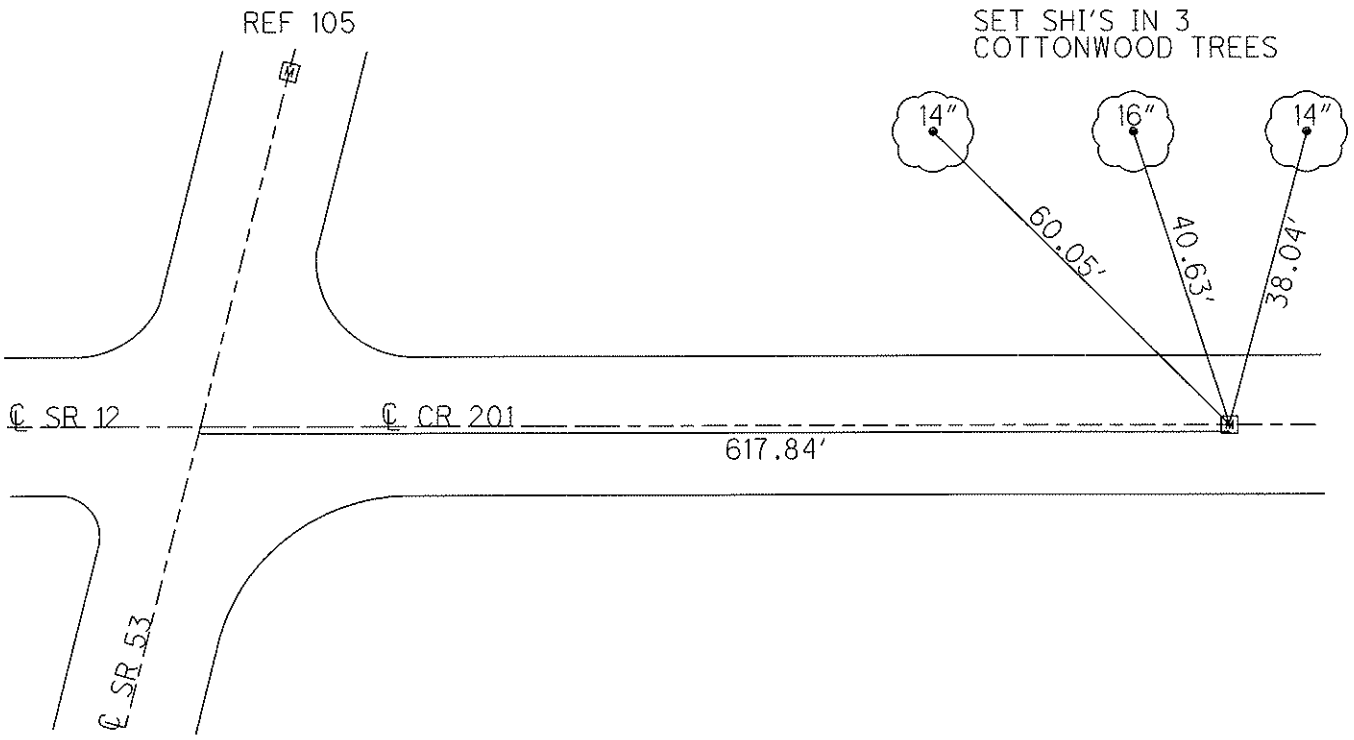
PERSONNEL	REFERENCE NO. <u>105 A</u>	SHEET <u>1</u> OF <u>1</u>
NOTES <u>RHOADES</u>	DATE <u>5/22/13</u>	ROUTE <u>SR 53</u>
H.C. <u>CODER</u>	WEATHER <u>CLOUDY</u>	COUNTY <u>SANDUSKY</u>
R.C. <u>RHOADES</u>	TEMP. <u>70°</u>	TOWNSHIP <u>BALLVILLE</u>
		SECTION <u>19</u>
		T <u>4</u> N R <u>15</u> E

TYPE MONUMENT MONBOX
 ON SURFACE - ~~BELOW~~ ON
 LEFT - ℄ PAV'T - RIGHT ON
- TO - EDGE PAVEMENT
 S.L.M. SR 53= 133+05.6, CR 201= 617.84
 Grid: Northing: 592689.564 Easting: 1784762.897



NOTE:
 REF 105
 N= 592947.528
 E= 1784235.728

NOTE:
 E. 1/4 POST
 OF SEC. 19



FD MONBOX (EMPTY)
 GPS, SV5004
 5/16/13, SDC
 PULLED TIES TO
 "+" CUT ON LID

PERSONNEL TITLE PERSONNEL TITLE

COUNTY Sandusky

DATE

S. R. #53

WEATHER

SEC. B-A

TEMP.

DESCRIPTION

LEFT

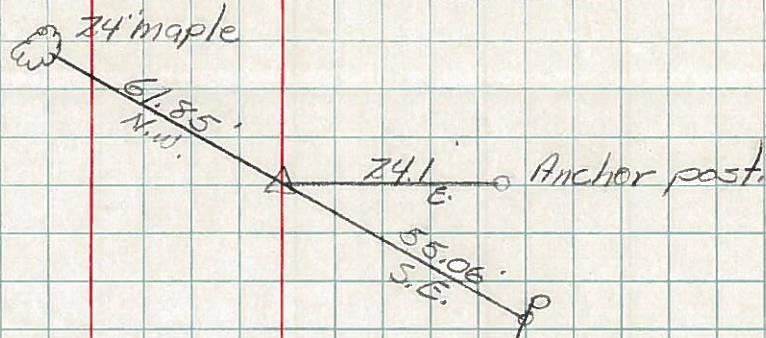
CENTER LINE

RIGHT

JOB NO.

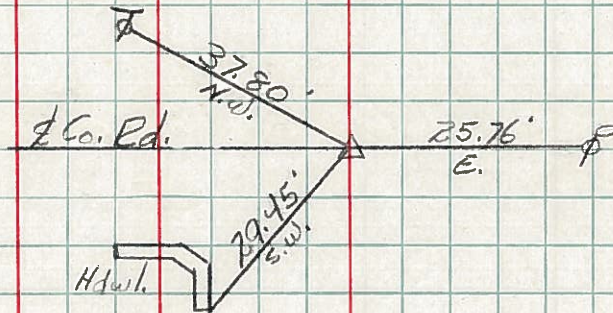
Sta. 80+33
Corner stone

#4



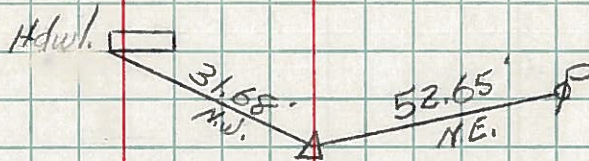
Sta. 92+44.5
Corner stone

#5



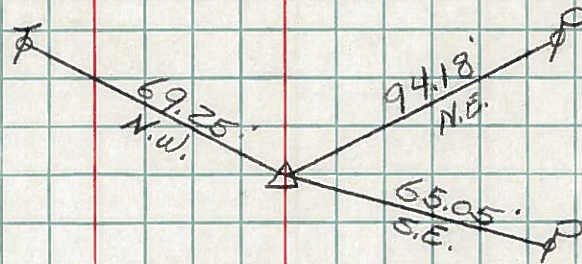
Sta. 102+11.1
Ties to Corner Stone

#6



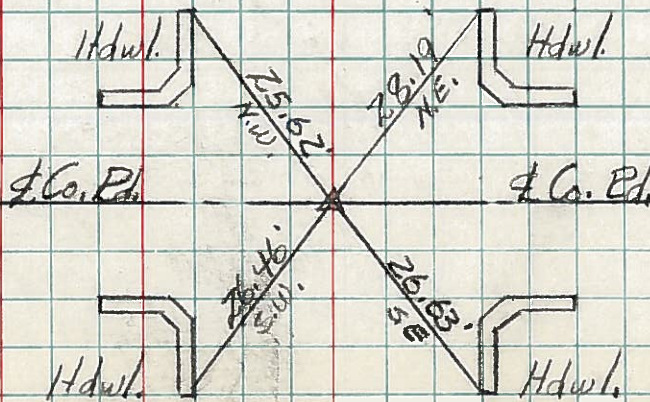
Sta. 115+37.2
Corner Stone

#7



Sta. 155+23
Ties to Corner Stone

#8



End of Sec. "B"