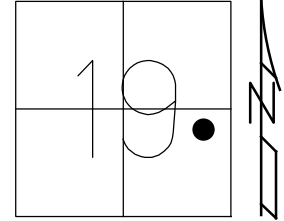


O.D.O.T. DISTRICT 2 SURVEY OFFICE (USE ONLY)

PERSONNEL _____ REFERENCE NO. 8 A SHEET 8 OF 25
 NOTES RHOADES DATE 6/3/20 ROUTE SR 53
 H.C. O'DONNELL WEATHER SUNNY/WINDY COUNTY SANDUSKY
 R.C. LEU TEMP. 82° TOWNSHIP BALLVILLE
 SECTION 19
 DWG BY O'DONNELL PID 101277 T 4 N R 5 E

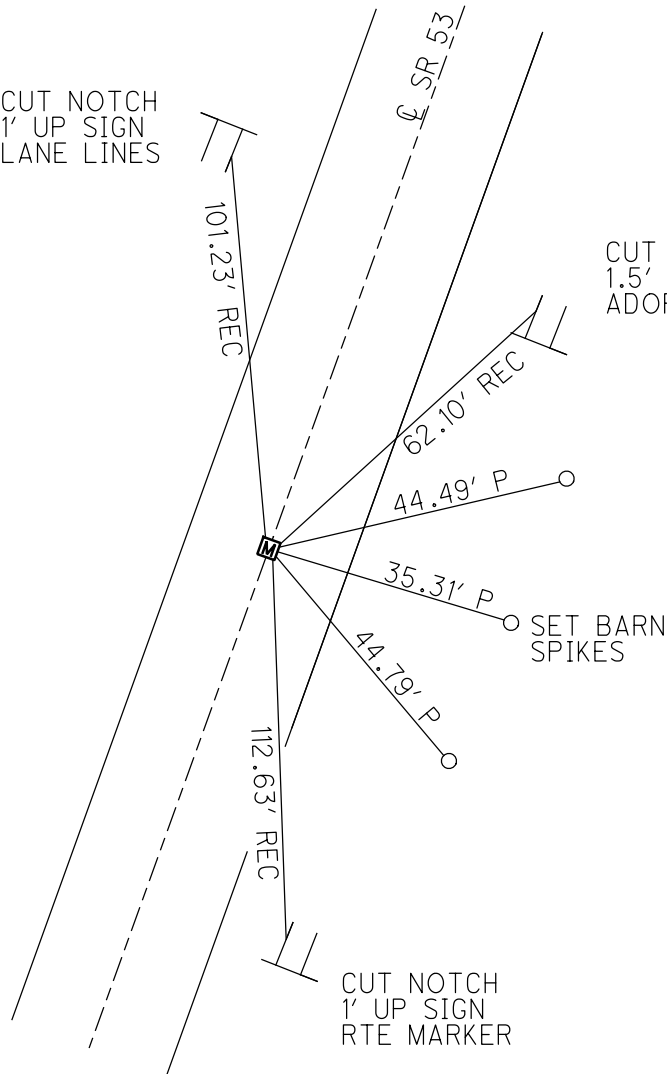
TYPE MONUMENT MONBOX W/ 1" IPIN
 ON SURFACE - ~~BELOW~~ ON
 LEFT - ☉ PAV'T - RIGHT ON
18.8' TO RT EDGE PAVEMENT
 STATION: 135+65.70



HORIZ.DATUM: NAD83 (2011) GEOID: 2012A
 GRID: NORTHING: 592947.550 EASTING: 1784235.786

RECORD: P.T.
 FD MONBOX
 SV105
 6/14/10, KPM
 FD MONBOX
 7/9/12, MC
 FD MONBOX
 W/ 1" IPIN
 REFA8
 6/3/20
 3/31/21, JFO

CUT NOTCH
 1' UP SIGN
 LANE LINES



CUT NOTCH
 1.5' UP SIGN
 ADOPT A HWY

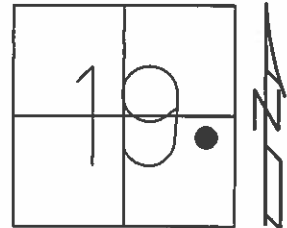
CUT NOTCH
 1' UP SIGN
 RTE MARKER

O.D.O.T. DISTRICT 2 SURVEY OFFICE (USE ONLY)

PERSONNEL _____ REFERENCE NO. 8 A SHEET 8 OF 25
NOTES CANTERBURY DATE 7/9/12 ROUTE SR 53
H.C. HUSS WEATHER SUNNY COUNTY SANDUSKY
R.C. COUTCHER TEMP. 74° TOWNSHIP BALLVILLE
HARBAUGH SECTION 19
T 4 N R 5 E

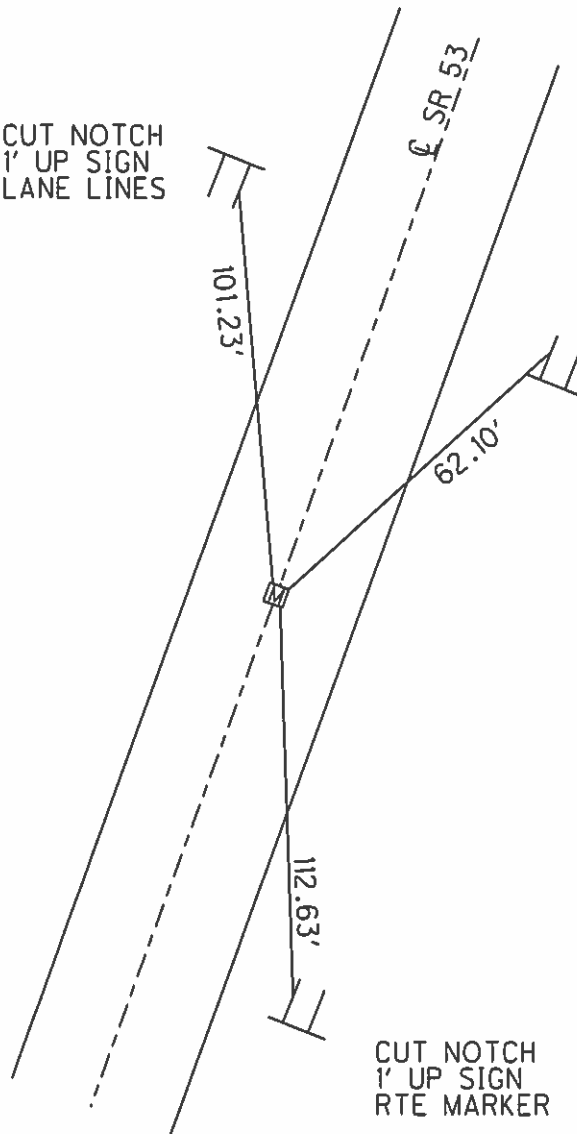
TYPE MONUMENT MON.BOX
ON SURFACE - ~~BELOW~~ ON
LEFT - ☉ PAV'T - RIGHT ON
18.8' TO RT EDGE PAVEMENT
S.L.M. 135+65.70

Grid: Northing: 592947.580 Easting: 1784235.692



RECORD: P.T.
FD MON.BOX
GPS, SV105
6/14/10, KPM

CUT NOTCH
1' UP SIGN
LANE LINES



CUT NOTCH
1.5' UP SIGN
ADOPT A HWY

CUT NOTCH
1' UP SIGN
RTE MARKER

