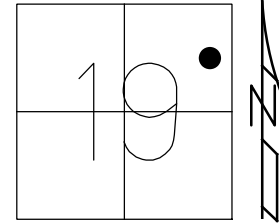


O.D.O.T. DISTRICT 2 SURVEY OFFICE (USE ONLY)

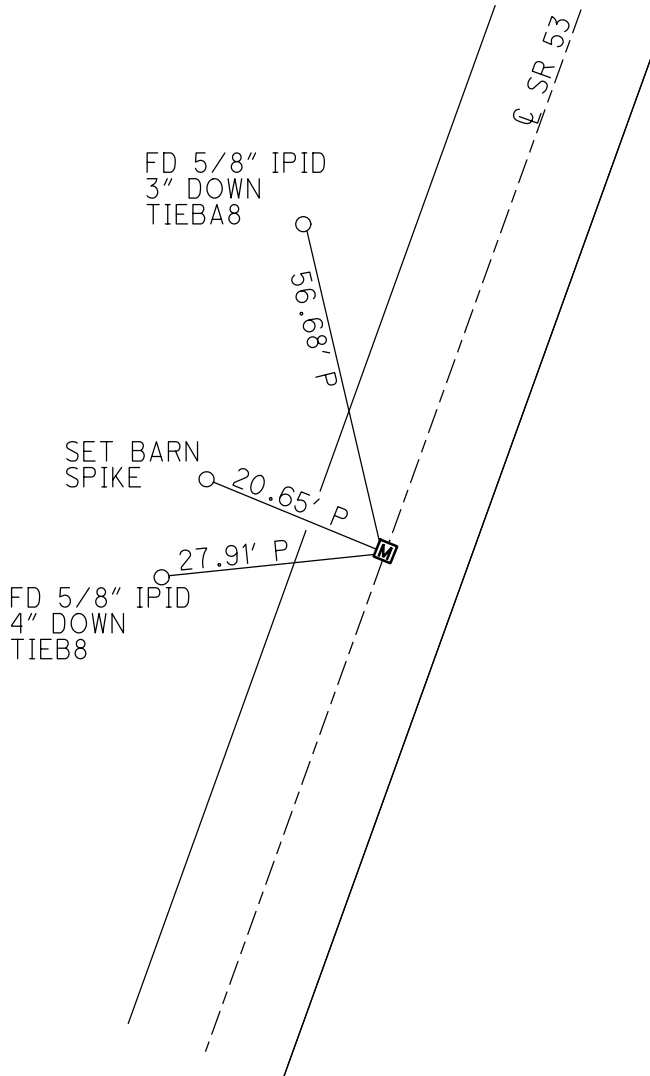
PERSONNEL _____ REFERENCE NO. 8 B SHEET 9 OF 25
 NOTES RHOADES DATE 6/3/20 ROUTE SR 53
 H.C. O'DONNELL WEATHER SUNNY/WINDY COUNTY SNADUSKY
 R.C. LEU TEMP. 82° TOWNSHIP BALLVILLE
 SECTION 19
 DWG BY O'DONNELL PID 101277 T 4 N R 5 E

TYPE MONUMENT MONBOX W/ 1" IPIN
 ON SURFACE - ~~BELOW~~ ON
 LEFT - ☉ PAV'T - RIGHT ON
11.4' TO LT EDGE PAVEMENT
 STATION: 143+56.37



HORZ.DATUM: NAD83 (2011) GEOID: 2012A
 GRID: NORTHING: 593683.299 EASTING: 1784525.344

RECORD: P.C.
 FD MONBOX
 SV106
 6/14/10, KPM
 FD MONBOX
 7/9/12, MC
 FD MONBOX
 W/ 1" IPIN
 REFB8
 6/3/20
 3/31/21, JFO

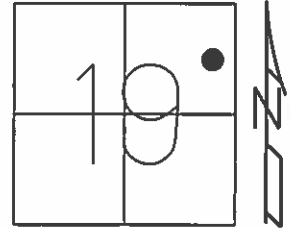


O.D.O.T. DISTRICT 2 SURVEY OFFICE (USE ONLY)

PERSONNEL _____ REFERENCE NO. 8 B SHEET 9 OF 25
NOTES CANTERBURY DATE 7/9/12 ROUTE SR 53
H.C. HUSS WEATHER SUNNY COUNTY SNADUSKY
R.C. COUTCHER TEMP. 75° TOWNSHIP BALLVILLE
HARBAUGH SECTION 19
T 4 N R 5 E

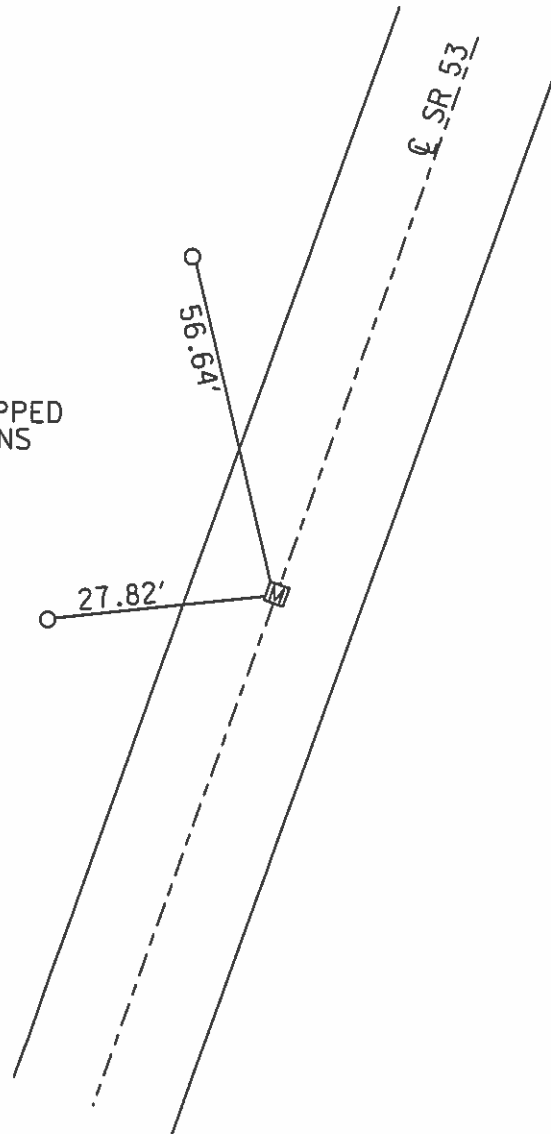
TYPE MONUMENT MON.BOX
ON SURFACE - ~~BELOW~~ ON
LEFT - ☉ PAV'T - RIGHT ON
11.4' TO LT EDGE PAVEMENT
S.L.M. 143+56.37

Grid: Northing: 593683.307 Easting: 1784525.284



RECORD: P.C.
FD MON.BOX, NO LID
GPS, SV106
6/14/10, KPM

FD
CAPPED
IPINS



PERSONNEL TITLE PERSONNEL TITLE

Schneider Potts

COUNTY Sandusky DATE Feb. 1968

Mosser

S. R. 53 WEATHER

Barbour

SEC. Seneca Co. Line - North TEMP.

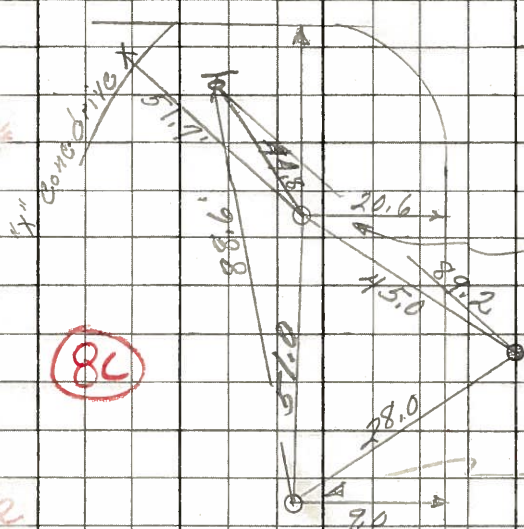
Redding

DESCRIPTION Ties for Control Points JOB NO.

LEFT CENTER LINE RIGHT

P.O.T. (9)
Mon. Box
160+31.25

Co. Rd. # 39
East & West



P.T.
Mon. Box
159+60.44

(8L)

Surv Kap 5" below surface

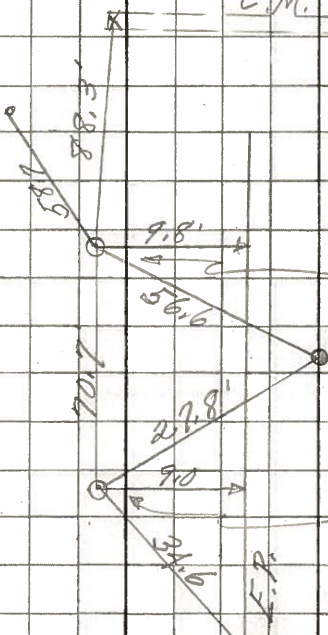
32

P.I.
151+69.81

did not find

C.M.P.

steel R post



P.C.
Mon. Box
143+60.44

(8B)

Surv Kap 5" below surface

32

Surv Kap 5" below surface

Nail & shiner lt. edge Pavmit