

O.D.O.T. DISTRICT 2 SURVEY OFFICE (USE ONLY)

PERSONNEL \_\_\_\_\_ REFERENCE NO. 8 C SHEET 10 OF 25

NOTES RHOADES DATE 6/5/20 ROUTE SR 53  
 H.C. O'DONNELL WEATHER SUNNY COUNTY SANDUSKY  
 R.C. LEU TEMP. 73° TOWNSHIP BALLVILLE  
 SECTION 19

DWG BY O'DONNELL PID 101277

T 4 N R 5 E

TYPE MONUMENT MONBOX W/ 1" IPIN

ON SURFACE - ~~BELOW~~ ON

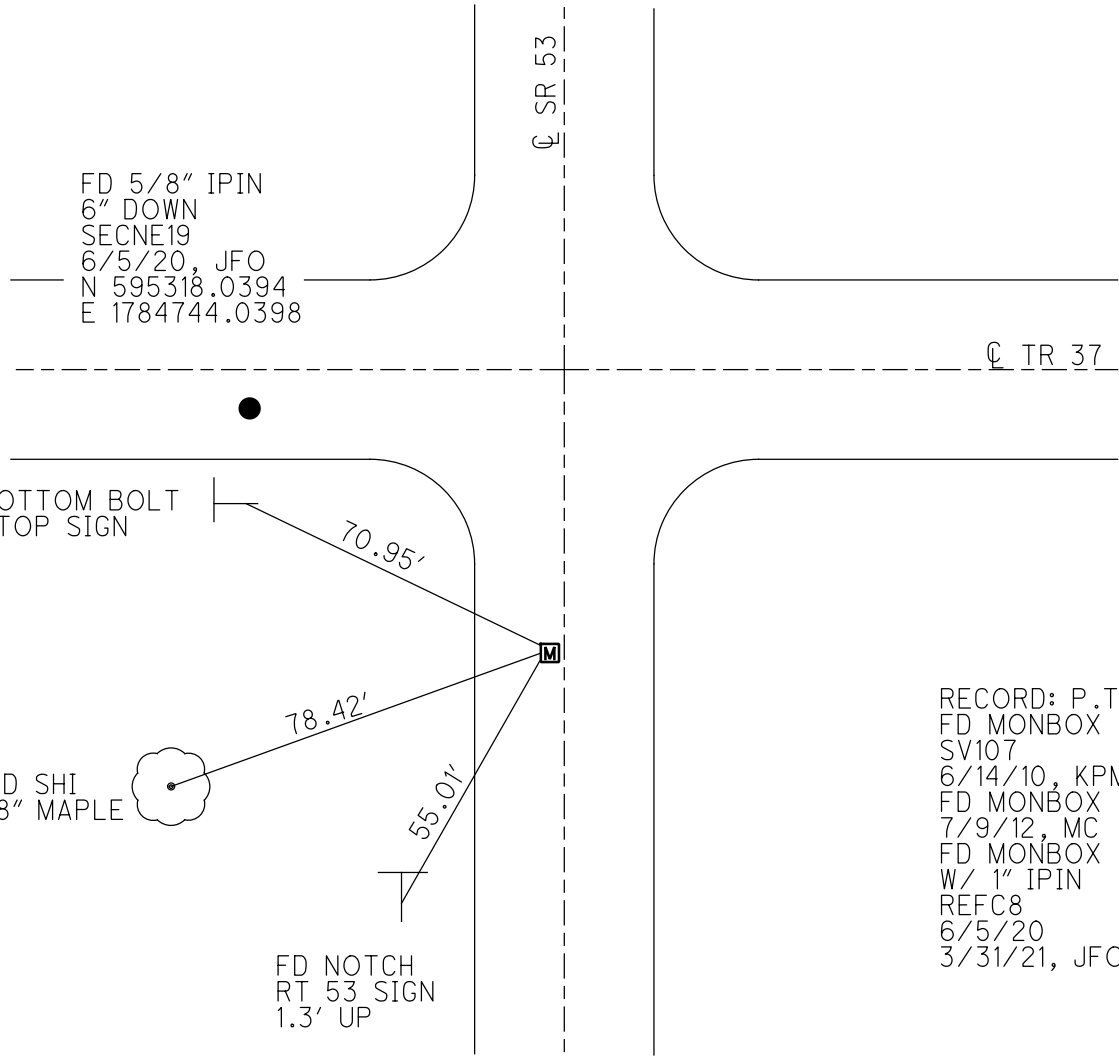
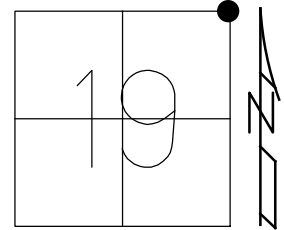
LEFT - ☉ PAV'T - ~~RIGHT~~ 1.2'

10.5' TO LT EDGE PAVEMENT

STATION: 159+55.87

HORZ.DATUM: NAD83 (2011) GEOID: 2012A

GRID: NORTHING: 595245.420 EASTING: 1784823.680

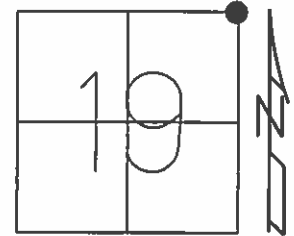


RECORD: P.T.  
 FD MONBOX  
 SV107  
 6/14/10, KPM  
 FD MONBOX  
 7/9/12, MC  
 FD MONBOX  
 W/ 1" IPIN  
 REFC8  
 6/5/20  
 3/31/21, JFO

O.D.O.T. DISTRICT 2 SURVEY OFFICE (USE ONLY)

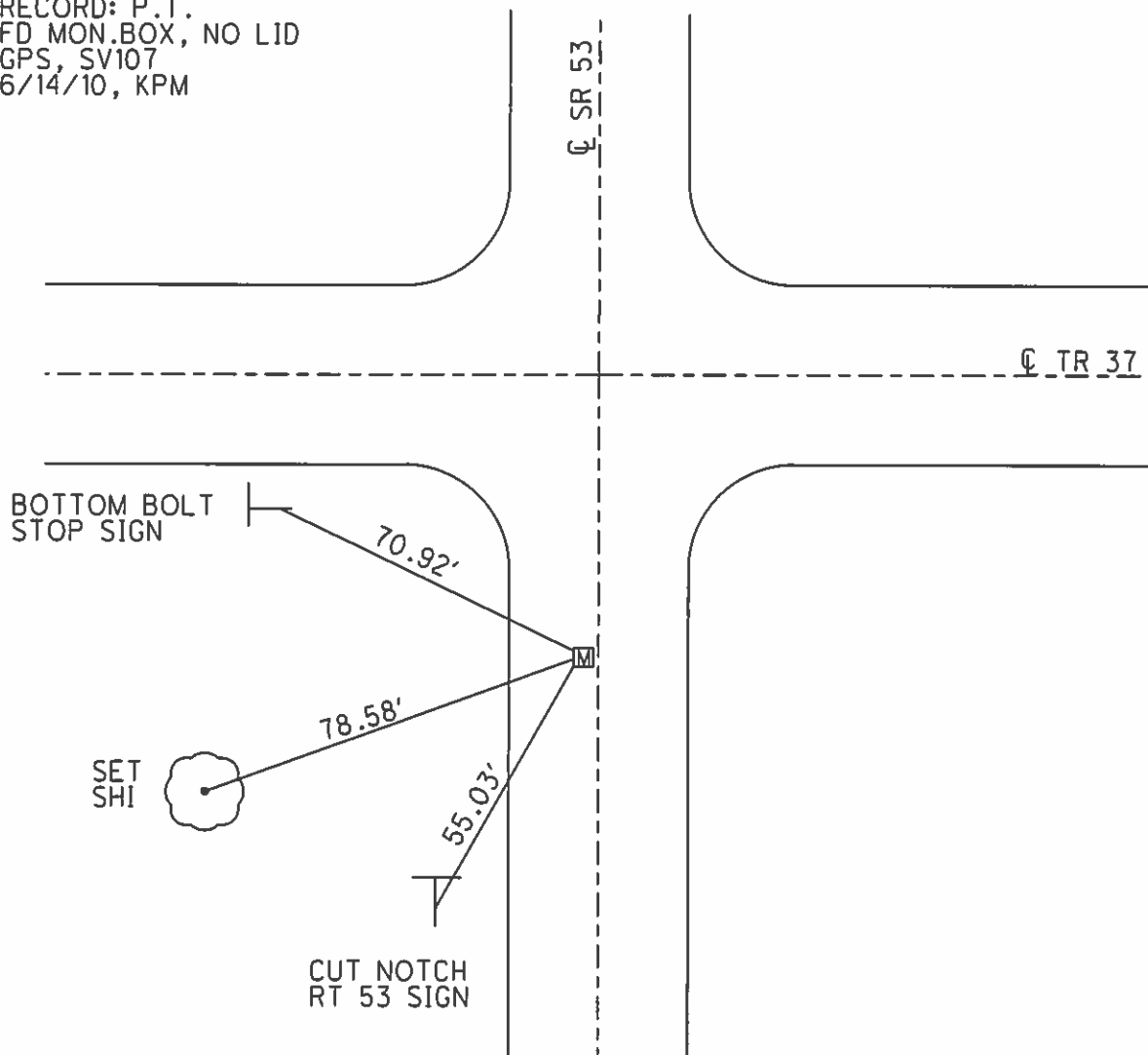
PERSONNEL \_\_\_\_\_ REFERENCE NO. 8 C SHEET 10 OF 25  
 NOTES CANTERBURY DATE 7/9/12 ROUTE SR 53  
 H.C. HUSS WEATHER SUNNY COUNTY SANDUSKY  
 R.C. COUTCHER TEMP. 75° TOWNSHIP BALLVILLE  
HARBAUGH SECTION 19  
 T 4 N R 5 E

TYPE MONUMENT MON.BOX  
 ON SURFACE - ~~BELOW~~ ON  
 LEFT - ☉ PAV'T - ~~RIGHT~~ 1.2'  
10.5' TO LT EDGE PAVEMENT  
 S.L.M. 159+55.87



Grid: Northing: 595245.350 Easting: 1784823.636

RECORD: P.T.  
 FD MON.BOX, NO LID  
 GPS, SV107  
 6/14/10, KPM



PERSONNEL TITLE PERSONNEL TITLE

Schneider Potts

COUNTY Sandusky DATE Feb. 1968

Mosser

S. R. 53 WEATHER

Barbour

SEC. Seneca Co. Line - North TEMP.

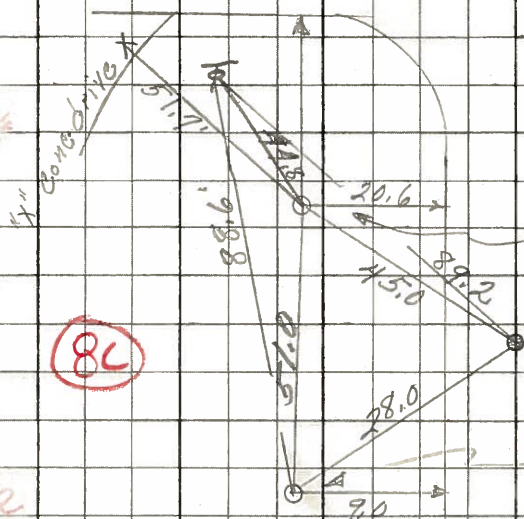
Redding

DESCRIPTION Ties for Control Points JOB NO.

LEFT CENTER LINE RIGHT

P.O.T. 9  
Mon. Box  
160+31.25

Co. Rd. # 39  
East & West

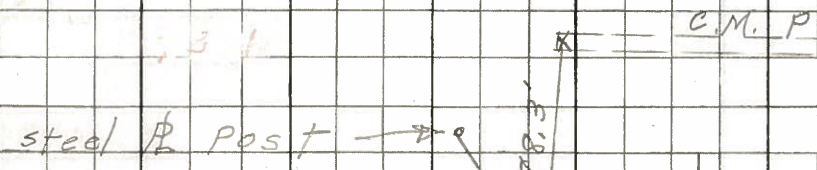


P.T. 8L  
Mon. Box  
159+60.44

SURV Kap 5" below surface

P.I.  
151+69.81

did not find



P.C. 8B  
Mon. Box  
143+60.44

SURV Kap 5" below surface

32

SURV Kap 5" below surface

Nail & shiner lt. edge Pavmit



PERSONNEL TITLE PERSONNEL TITLE

COUNTY Sandusky

DATE

S. R. #53

WEATHER

SEC. B-A

TEMP.

DESCRIPTION

LEFT

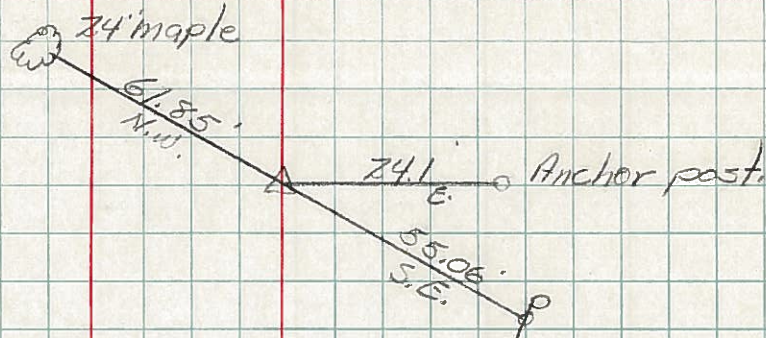
CENTER LINE

RIGHT

JOB NO.

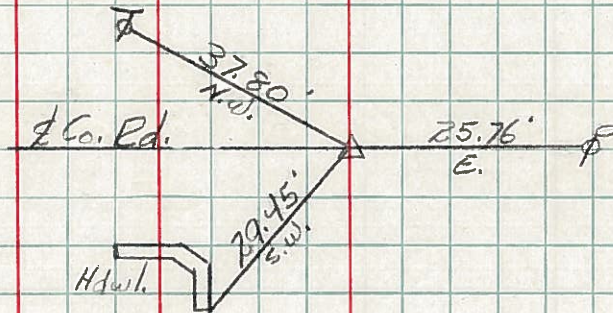
Sta. 80+33  
Corner stone

#4



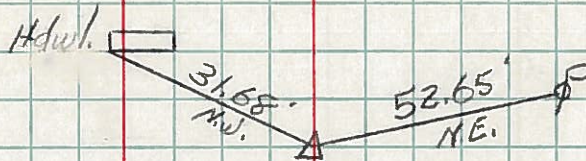
Sta. 92+44.5  
Corner stone

#5



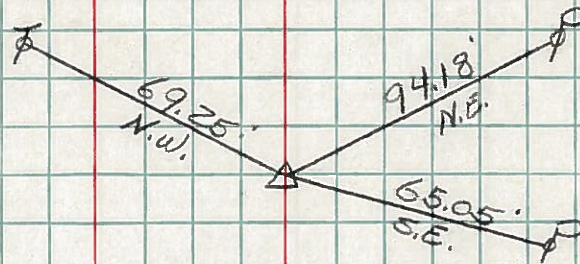
Sta. 102+11.1  
Ties to Corner Stone

#6



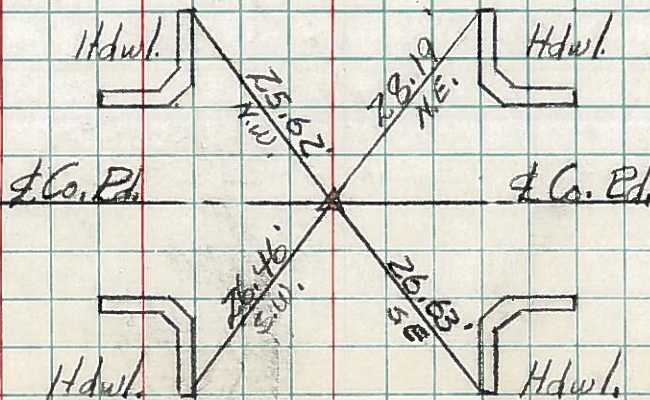
Sta. 115+37.2  
Corner Stone

#7



Sta. 155+23  
Ties to Corner Stone

#8



End of Sec. "B"