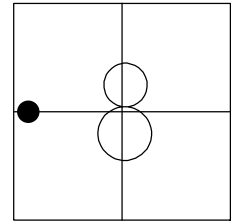


O.D.O.T. DISTRICT 2 SURVEY OFFICE (USE ONLY)

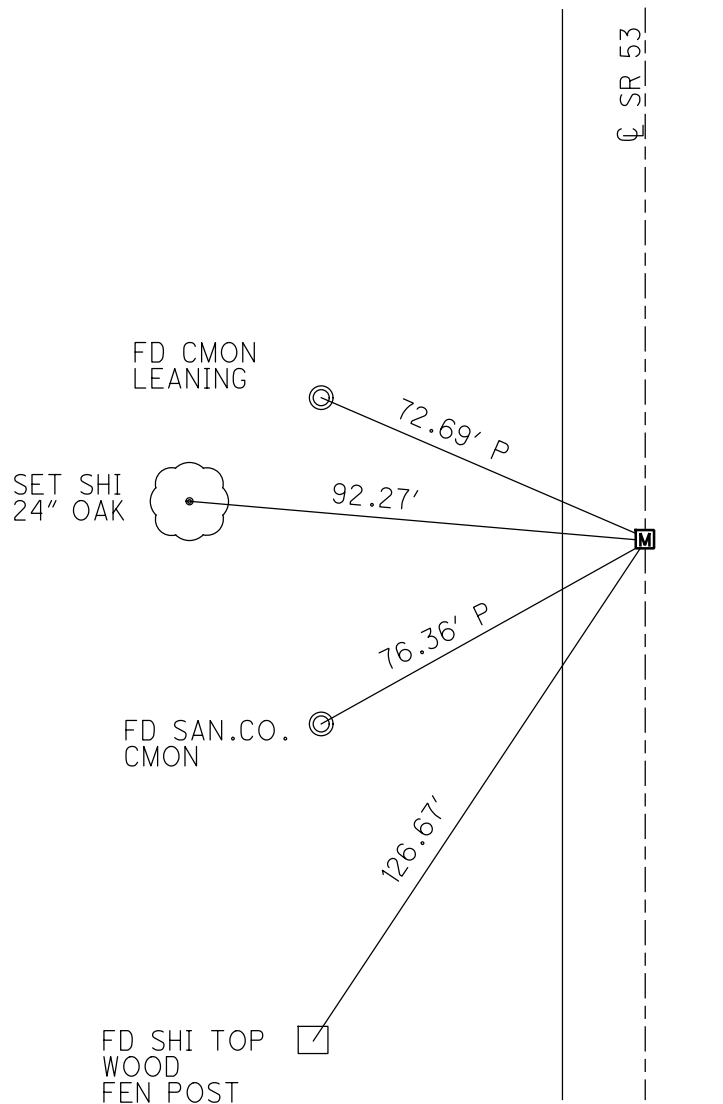
PERSONNEL _____ REFERENCE NO. 11 SHEET 13 OF 25
 NOTES RHOADES DATE 6/5/20 ROUTE SR 53
 H.C. O'DONNELL WEATHER SUNNY COUNTY SANDUSKY
 R.C. LEU TEMP. 79° TOWNSHIP BALLVILLE
 SECTION 8
 DWG BY O'DONNELL PID 101277 T 4 N R 5 E

TYPE MONUMENT MONBOX W/ 1" IPIN
 ON SURFACE - ~~BELOW~~ ON
 LEFT - ☉ PAV'T - RIGHT ON
11.4' TO LT EDGE PAVEMENT
 STATION: 239+67.39



HORIZ.DATUM: NAD83 (2011) GEOID: 2012A
 GRID: NORTHING: 603255.640 EASTING: 1784942.145

RECORD: P.I.
 FD MONBOX
 SV110
 6/15/10, JMH
 FD MONBOX
 7/9/12, MC
 FD MONBOX
 W/ 1" IPIN
 REF11
 6/5/20
 2/10/21, JFO

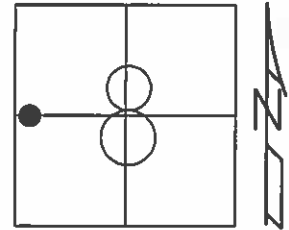


O.D.O.T. DISTRICT 2 SURVEY OFFICE (USE ONLY)

PERSONNEL _____ REFERENCE NO. 11 SHEET 13 OF 25

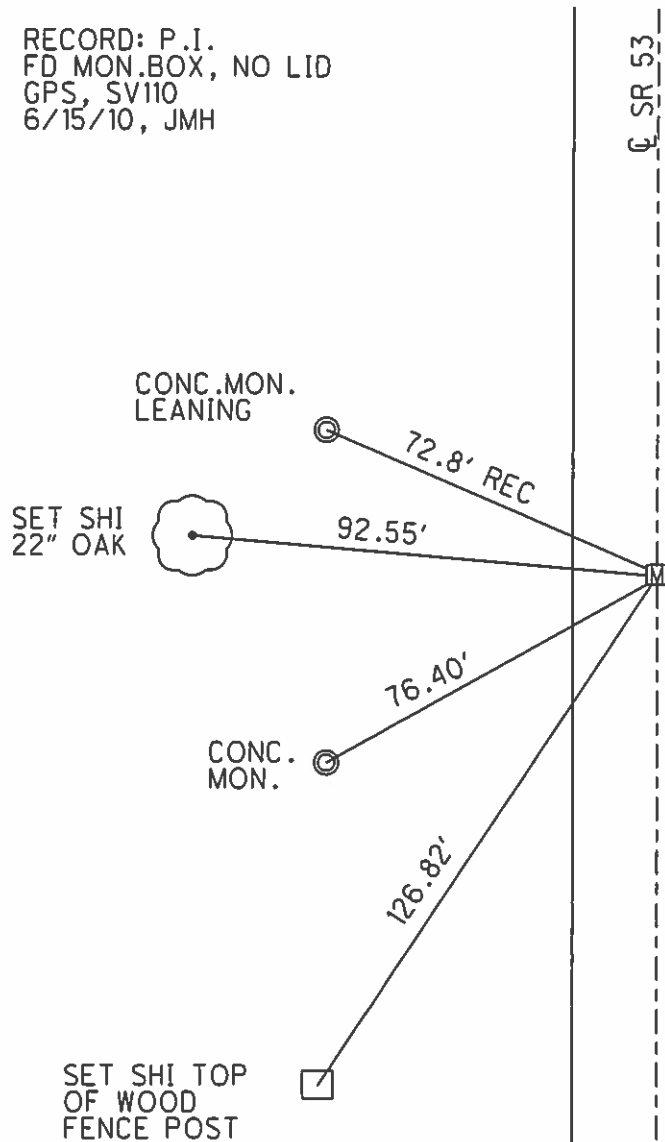
NOTES CANTERBURY DATE 7/9/12 ROUTE SR 53
 H.C. HUSS WEATHER SUNNY COUNTY SANDUSKY
 R.C. COUTCHER TEMP. 82° TOWNSHIP BALLVILLE
HARBAUGH SECTION 8
 T 4 N R 5 E

TYPE MONUMENT MON.BOX
 ON SURFACE - ~~BELOW~~ ON
 LEFT - ☉ PAV'T - RIGHT ON
11.4' TO LT EDGE PAVEMENT
 S.L.M. 239+67.39



Grid: Northing: 603255.681 Easting: 1784942.024

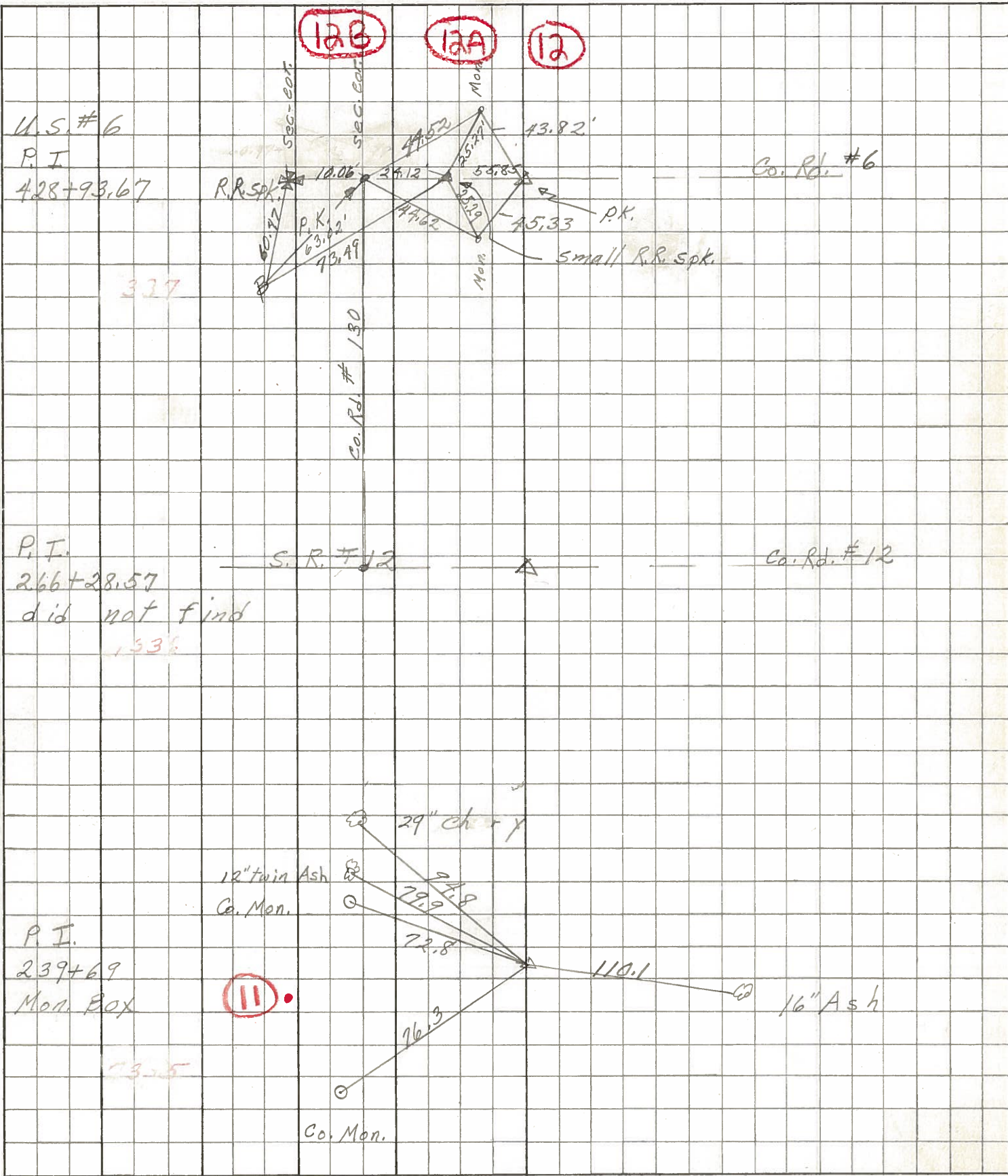
RECORD: P.I.
 FD MON.BOX, NO LID
 GPS, SV110
 6/15/10, JMH



PERSONNEL TITLE PERSONNEL TITLE
 Schneider _____
 Mosser _____
 Redding _____
 Potts _____

COUNTY Sandusky DATE Feb. 1968
 S. R. # 53 WEATHER _____
 SEC. Seneca Co. Line-North TEMP. _____

DESCRIPTION Ties for Control Points JOB NO. _____



U.S. # 6
 P.I.
 428+93.67

P.I.
 266+28.57
 did not find
 133%

P.I.
 239+69
 Mon. Box