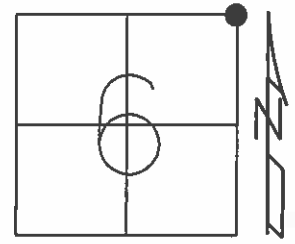


O.D.O.T. DISTRICT 2 SURVEY OFFICE (USE ONLY)

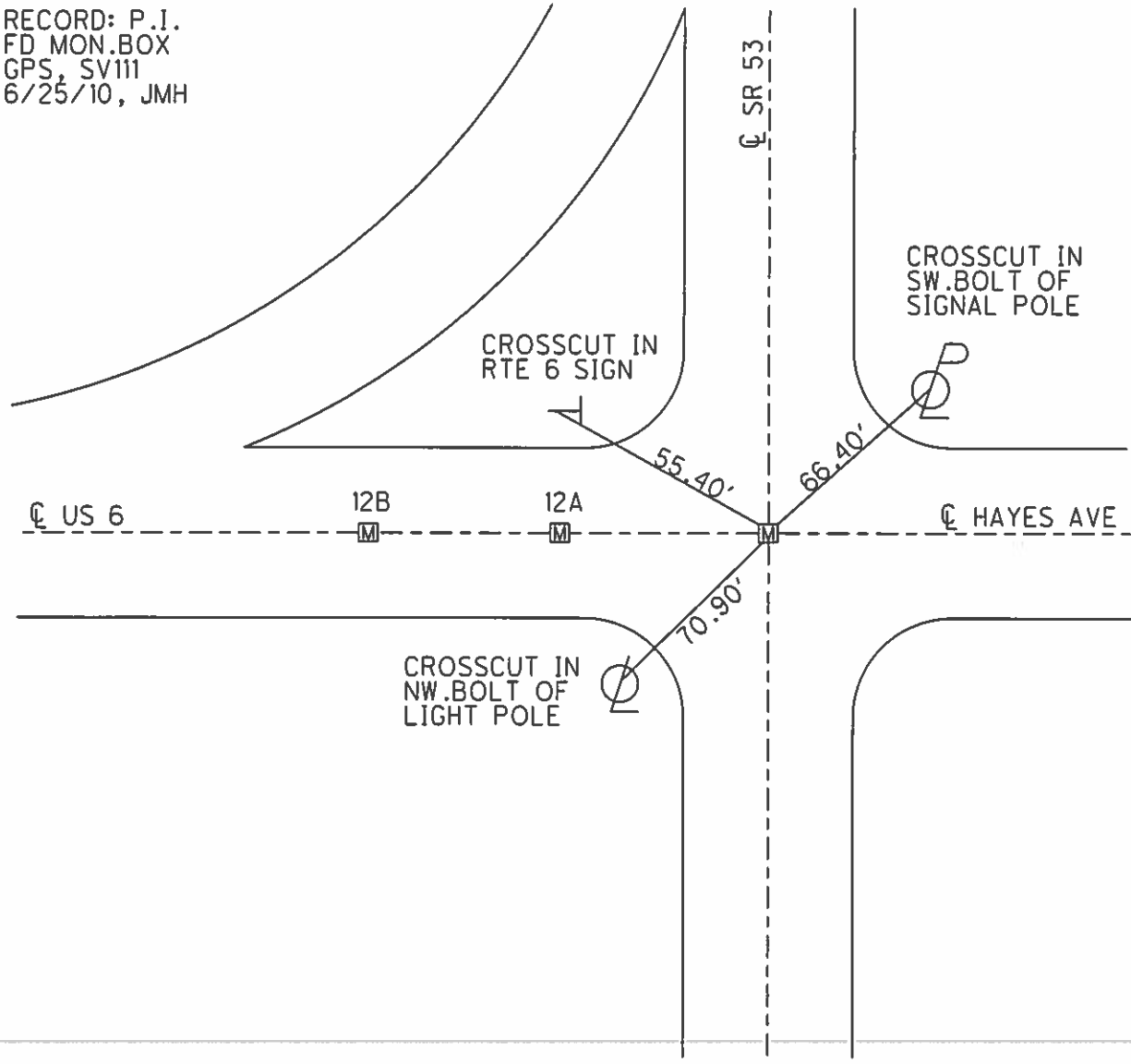
PERSONNEL _____ REFERENCE NO. 12 SHEET 14 OF 25
 NOTES CANTERBURY DATE 7/9/12 ROUTE SR 53
 H.C. HUSS WEATHER SUNNY COUNTY SANDUSKY
 R.C. COUTCHER TEMP. 82° TOWNSHIP BALLVILLE
HARBAUGH SECTION 6
 T 4 N R 5 E

TYPE MONUMENT MON.BOX
 ON SURFACE - ~~BELOW~~ ON
 LEFT - ☉ PAV'T - RIGHT ON
- TO - EDGE PAVEMENT
 S.L.M. 318+05.32



Grid: Northing: 611090.198 Easting: 1785156.211

RECORD: P.I.
 FD MON.BOX
 GPS, SV111
 6/25/10, JMH



PERSONNEL TITLE PERSONNEL TITLE

Schneider
Masser
Redding
Potts

COUNTY Sandusky DATE Feb. 1968
S. R. # 53 WEATHER
SEC. Seneca Co. Line-North TEMP.

DESCRIPTION Ties for Control Points LEFT CENTER LINE RIGHT JOB NO.

