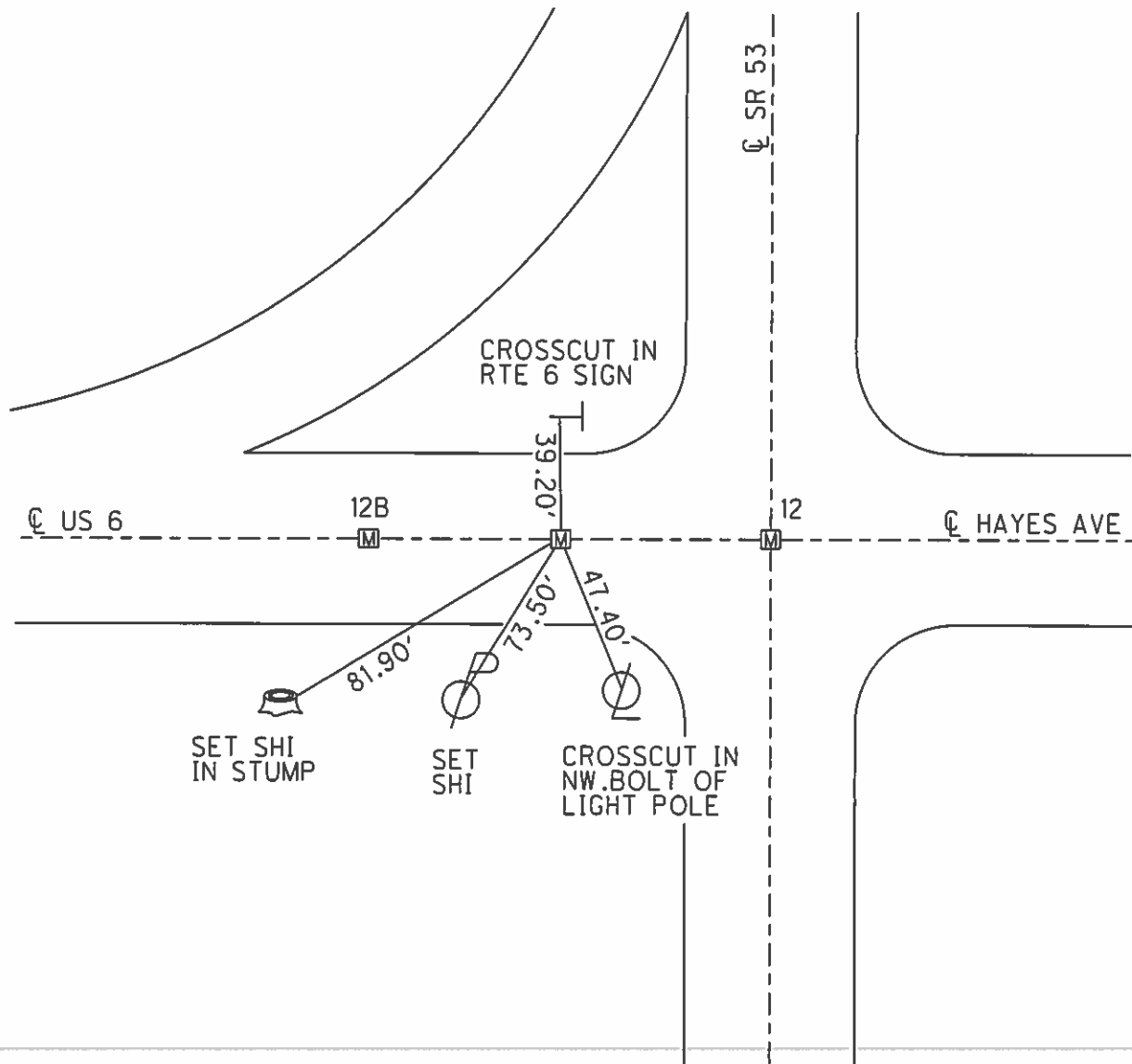
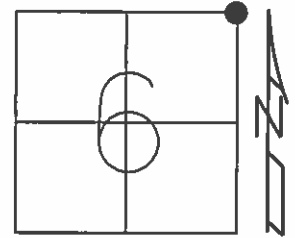


O.D.O.T. DISTRICT 2 SURVEY OFFICE (USE ONLY)

PERSONNEL _____ REFERENCE NO. 12 A SHEET 15 OF 25
 NOTES CANTERBURY DATE 7/9/12 ROUTE SR 53
 H.C. HUSS WEATHER SUNNY COUNTY SANDUSKY
 R.C. COUTCHER TEMP. 82° TOWNSHIP BALLVILLE
HARBAUGH SECTION 6
 T 4 N R 5 E

TYPE MONUMENT MON.BOX
 ON SURFACE - ~~BELOW~~ ON _____
 LEFT - ☉ PAV'T - RIGHT _____
 - TO - EDGE PAVEMENT
 S.L.M. 318+05.32

Grid: Northing: 611090.632 Easting: 1785100.386



PERSONNEL TITLE PERSONNEL TITLE

Schneider
Masser
Redding
Potts

COUNTY Sandusky DATE Feb. 1968

S. R. # 53 WEATHER

SEC. Seneca Co. Line-North TEMP.

DESCRIPTION Ties for Control Points JOB NO.

