

O.D.O.T. DISTRICT 2 SURVEY OFFICE (USE ONLY)

PERSONNEL _____

REFERENCE NO. 17

SHEET 25 OF 30

NOTES WESTFALL DATE 10/9/14
 H.C. HOMAN WEATHER FAIR
 R.C. WESTFALL TEMP. 54°

ROUTE SR 53
 COUNTY SANDUSKY
 TOWNSHIP SANDUSKY
 SECTION 31
 T 5 N R 15 E

DWG BY RHOADES PID 111020

TYPE MONUMENT MAG/WASHER

ON SURFACE - ~~BELOW~~ ON

OFFSET CL PAVEMENT 0.3' LT : ~~RT~~

11.6' TO RT EDGE PAVEMENT

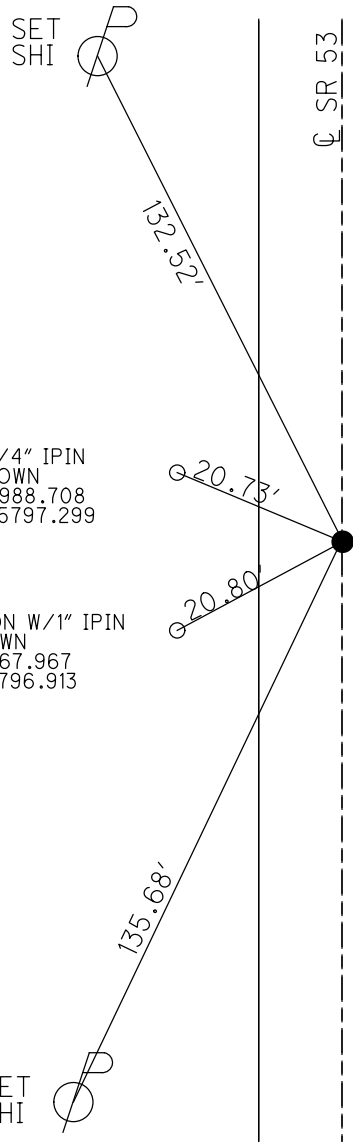
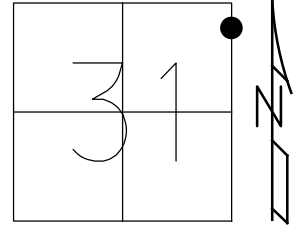
STATION: 479+00.36

HORZ.DATUM: NAD83 2011

GEOID: NAVD88 2012A

GRID: NORTHING: 615978.064

EASTING: 1785815.100



FD 1 1/4" IPIN
 1.3' DOWN
 N: 615988.708
 E: 1785797.299

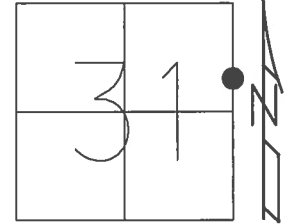
FD CMON W/1" IPIN
 1.3' DOWN
 N: 615967.967
 E: 1785796.913

RECORD: P.O.T.
 SET MAG/WASHER
 7/15/12
 GPS, SV116
 7/29/10, KPM
 SET MAG/WASHER
 CKREF17
 10/9/14, DCH
 SET MAG/WASHER
 REF17
 9/15/17, JLL

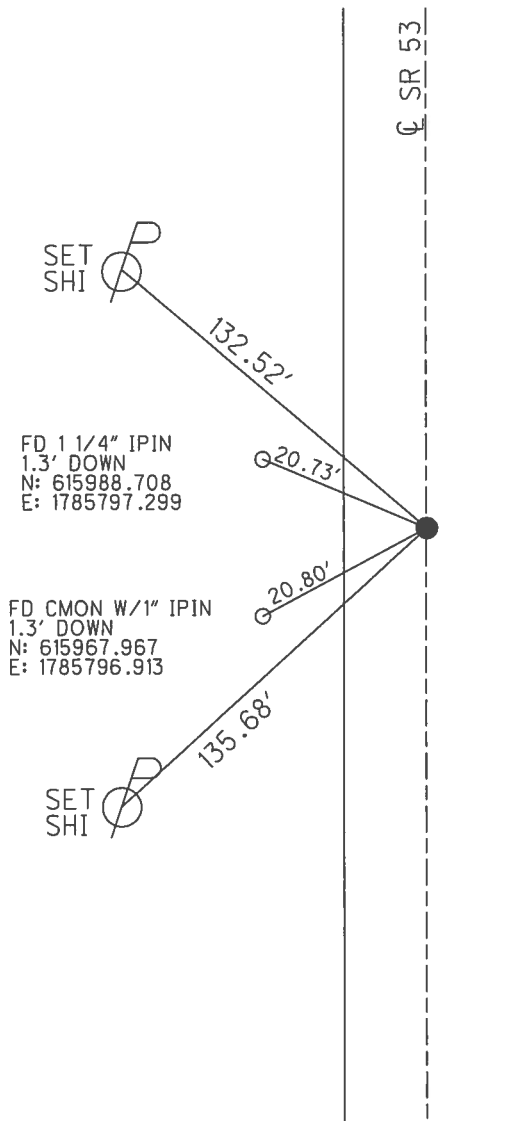
O.D.O.T. DISTRICT 2 SURVEY OFFICE (USE ONLY)

PERSONNEL _____ REFERENCE NO. 17 SHEET 21 OF 25
 NOTES WESTFALL DATE 10/9/14 ROUTE SR 53
 H.C. HOMAN WEATHER FAIR COUNTY SANDUSKY
 R.C. WESTFALL TEMP. 54° TOWNSHIP SANDUSKY
 _____ SECTION 31
 _____ T 5 N R 15 E

TYPE MONUMENT MAG/WASHER
 ON SURFACE - BELOW ON
 LEFT - ☉ PAV'T - RIGHT 0.3'
11.6' TO RT EDGE PAVEMENT
 S.L.M. 479+00.36



Grid: Northing: 615978.064 Easting: 1785815.100



RECORD: P.O.T.
 SET MAG/WASHER
 7/15/12
 GPS, SV116
 7/29/10, KPM
 SET MAG/WASHER
 CKREF17
 10/9/14, DCH
 SET MAG/WASHER
 REF17
 9/15/17, JLL

