

O.D.O.T. DISTRICT 2 SURVEY OFFICE (USE ONLY)

PERSONNEL

REFERENCE NO. 20

SHEET 28 OF 30

NOTES AUBLE

DATE 6/2/22

ROUTE SR 53

H.C. NIESE

WEATHER BREEZY

COUNTY SANDUSKY

R.C. WHITAKER

TEMP. 70°

TOWNSHIP SANDUSKY

DWG BY RHOADES PID 111020

SECTION 29

T 5 N R 15 E

TYPE MONUMENT MAG/WASHER

ON SURFACE - ~~BELOW~~ ON

OFFSET ☉ PAVEMENT ON LT : RT

11.8' TO LT EDGE PAVEMENT

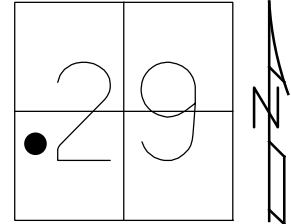
STATION: 392+36.41

HORIZ.DATUM: NAD83 2011

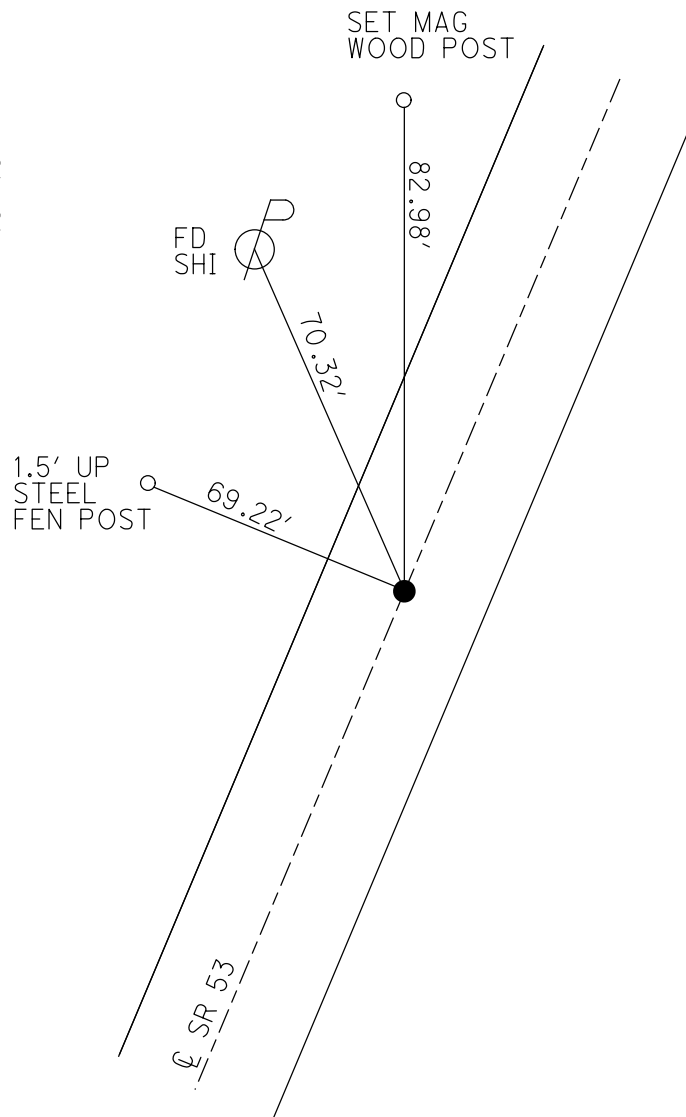
GEOID: NAVD88 2018

GRID: NORTHING: 618354.406

EASTING: 1786221.920



RECORD: S.T.
 STA.503+52.02
 1956
 SV113
 7/29/10, KPM
 SET MAG/WASHER
 7/19/12
 SET MAG/WASHER
 1-4-22, TDN
 FD MAG/WASHER
 REF20
 6-2-22, TDN



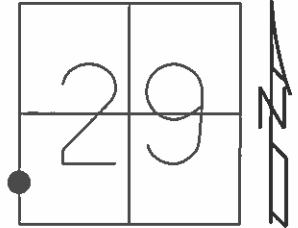
O.D.O.T. DISTRICT 2 SURVEY OFFICE (USE ONLY)

PERSONNEL _____ REFERENCE NO. 20 SHEET 24 OF 25

NOTES CANTERBURY DATE 7/13/12 ROUTE SR 53
H.C. HUSS WEATHER SUNNY COUNTY SANDUSKY
R.C. COUTCHER TEMP. 75° TOWNSHIP SANDUSKY
SECTION 29
T 5 N R 15 E

TYPE MONUMENT MAG/WASHER
ON SURFACE - ~~BELOW~~ ON
LEFT - ☉ PAV'T - RIGHT ON
11.8' TO LT EDGE PAVEMENT
S.L.M. 392+36.41

Grid: Northing: 618354.396 Easting: 1786222.042



RECORD: S.T.
SET MAG/WASHER
7/19/12
GPS, SV113
7/29/10, KPM

