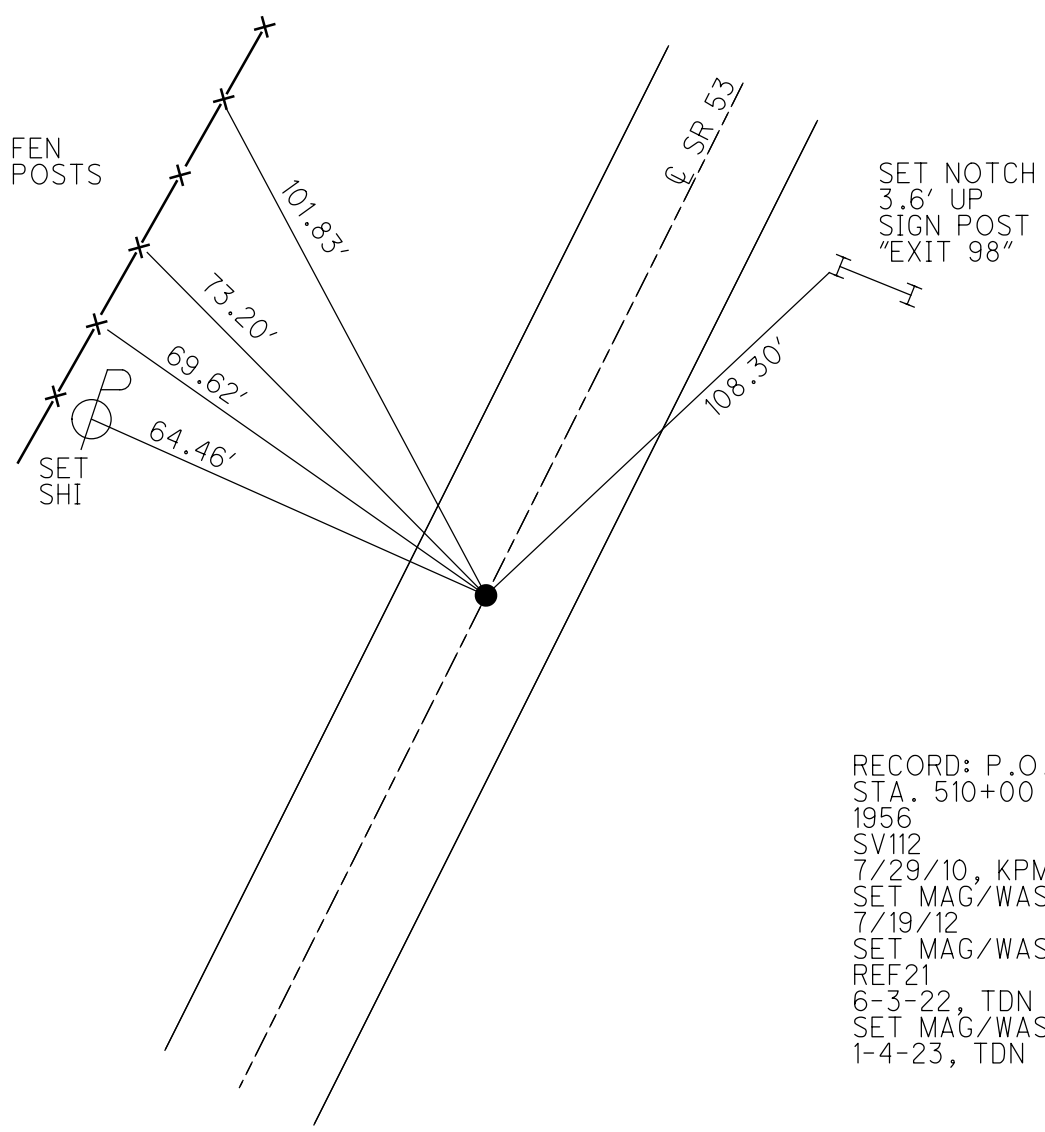
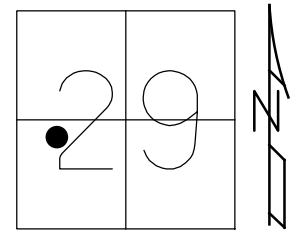


O.D.O.T. DISTRICT 2 SURVEY OFFICE (USE ONLY)

PERSONNEL _____ REFERENCE NO. 21 SHEET 29 OF 30
 NOTES AUBLE DATE 6/2/23 ROUTE SR 53
 H.C. NIESE WEATHER BREEZY COUNTY SANDUSKY
 R.C. WHITAKER TEMP. 70° TOWNSHIP SANDUSKY
 DWG BY RHOADES PID 111020 SECTION 29
 T 5 N R 15 E

TYPE MONUMENT MAG/WASHER
 ON SURFACE - ~~BELOW~~ ON
 OFFSET \odot PAVEMENT 0.3' LT : ~~RT~~
11.5' TO LT EDGE PAVEMENT
 STATION: 398+84.42

HORZ. DATUM: NAD83 2011 GEOID: NAVD88 2018
 GRID: NORTHING: 618920.056 EASTING: 1786538.139

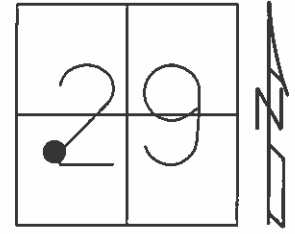


RECORD: P.O.T.
 STA. 510+00
 1956
 SV112
 7/29/10, KPM
 SET MAG/WASHER
 7/19/12
 SET MAG/WASHER
 REF21
 6-3-22, TDN
 SET MAG/WASHER
 1-4-23, TDN

O.D.O.T. DISTRICT 2 SURVEY OFFICE (USE ONLY)

PERSONNEL _____ REFERENCE NO. 21 SHEET 25 OF 25
 NOTES CANTERBURY DATE 7/13/12 ROUTE SR 53
 H.C. HUSS WEATHER SUNNY COUNTY SANDUSKY
 R.C. COUTCHER TEMP. 75° TOWNSHIP SANDUSKY
 _____ SECTION 29
 _____ T 5 N R 15 E

TYPE MONUMENT MAG/WASHER
 ON SURFACE - ~~BELOW~~ ON
 LEFT - CL PAV'T - ~~RIGHT~~ 0.5'
11.5' TO LT EDGE PAVEMENT
 S.L.M. 398+84.42



Grid: Northing: 618920.152 Easting: 1786538.015

RECORD: P.O.T.
 SET MAG/WASHER
 7/19/12
 GPS, SV112
 7/29/10, KPM

