

O.D.O.T. DISTRICT 2 SURVEY OFFICE (USE ONLY)

PERSONNEL

REFERENCE NO. 26 A

SHEET 10 OF 11

NOTES RHOADES
 H.C. AUBLE
 R.C. MILLER
NIESE, ASTON

DATE 11/22/23
 WEATHER OVERCAST
 TEMP. 39°

ROUTE SR 53
 COUNTY SANDUSKY
 TOWNSHIP SANDUSKY
 SECTION 15
 T 5 N R 15 E

DWG BY RHOADES PID 95760

TYPE MONUMENT MAG NAIL

ON SURFACE - ~~BELOW~~ ON

OFFSET 0 PAVEMENT - 0 ~~LT~~ : RT

34.95' TO RT EDGE PAVEMENT

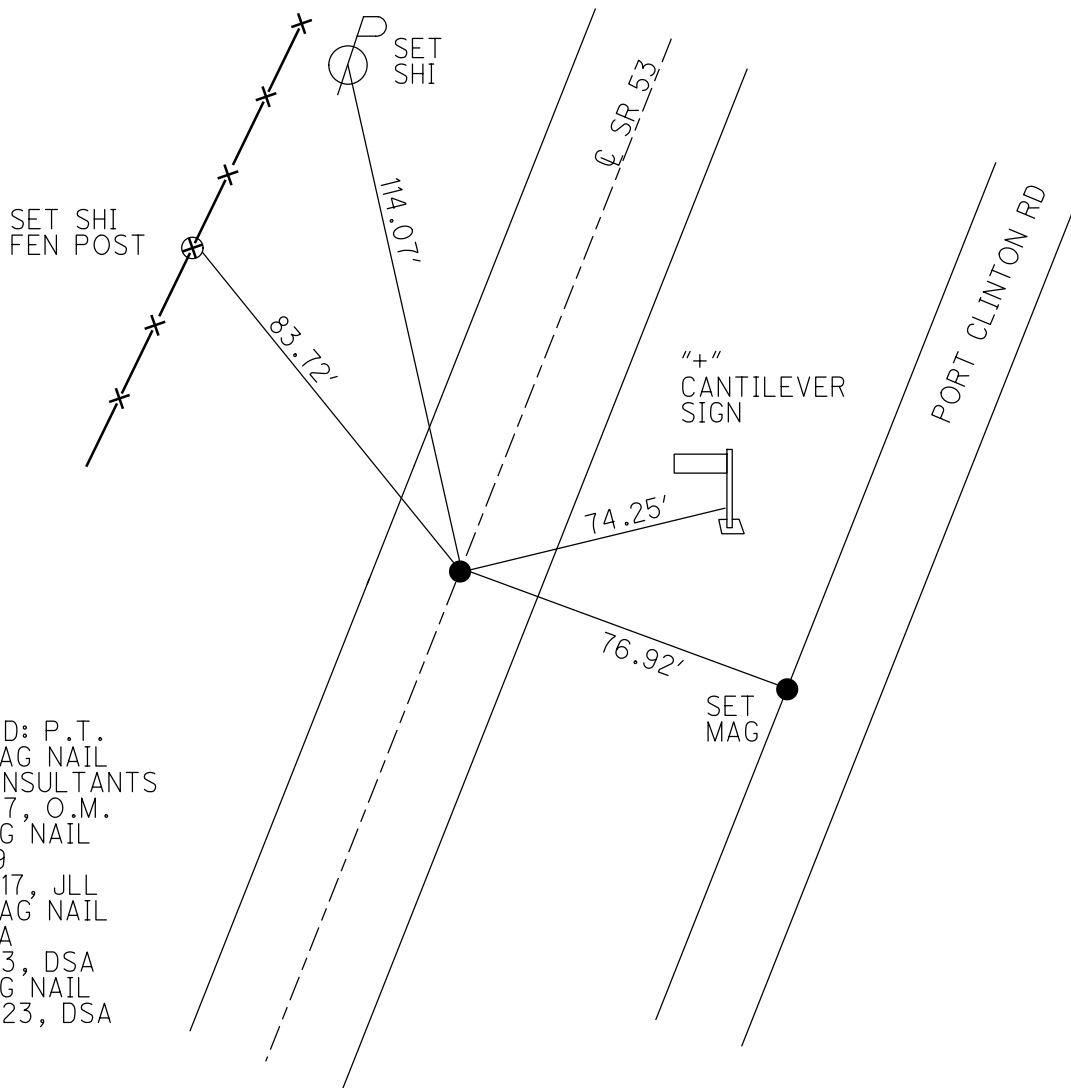
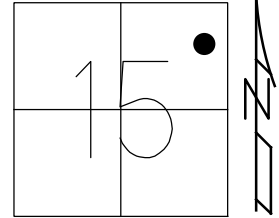
STATION: 547+63.85

HORZ.DATUM: NAD83 2011

GEOID: NAVD88 2018

GRID: NORTHING: 630826.858

EASTING: 1801540.803



RECORD: P.T.
 SET MAG NAIL
 NW CONSULTANTS
 6/15/17, O.M.
 FD MAG NAIL
 REF109
 8/28/17, JLL
 SET MAG NAIL
 REF26A
 8/3/23, DSA
 FD MAG NAIL
 11/22/23, DSA

O.D.O.T. DISTRICT 2 SURVEY OFFICE (USE ONLY)

PERSONNEL

REFERENCE NO. 26 A

SHEET 10 OF 11

NOTES LEU
 H.C. LEU
 R.C. FARKAS

DATE 8/28/17
 WEATHER FAIR
 TEMP. 69°

ROUTE SR 53
 COUNTY SANDUSKY
 TOWNSHIP SANDUSKY
 SECTION 15
 T 5 N R 15 E

DWG BY RHOADES PID 101292

TYPE MONUMENT MAG NAIL

ON SURFACE - ~~BELOW~~ ON

OFFSET Q PAVEMENT - ± ~~LT~~ : RT

34.95' TO RT EDGE PAVEMENT

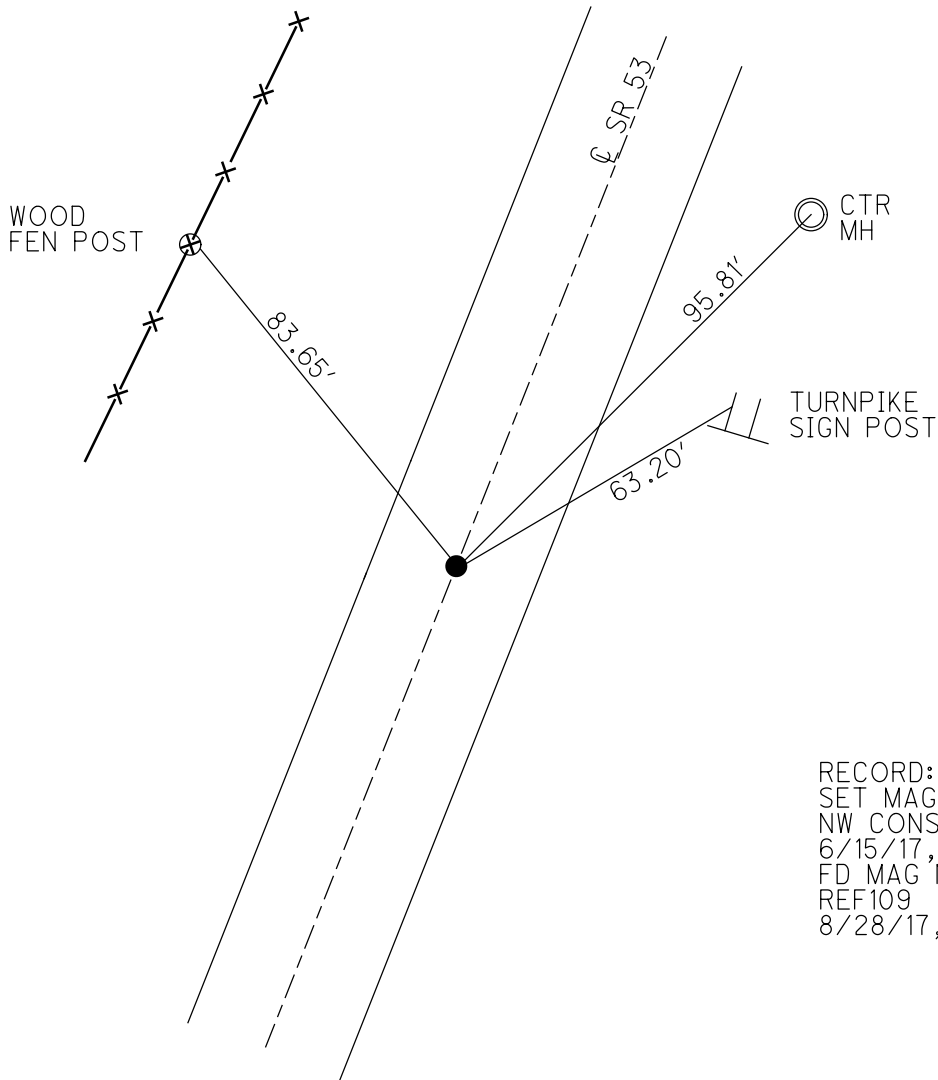
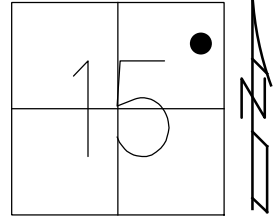
STATION: 547+63.85

HORZ.DATUM: NAD83 2011

GEOID: NAVD88 2012A

GRID: NORTHING 630826.838

EASTING: 1801540.844



RECORD: P.T.
 SET MAG NAIL
 NW CONSULTANTS
 6/15/17, O.M.
 FD MAG NAIL
 REF109
 8/28/17, JLL