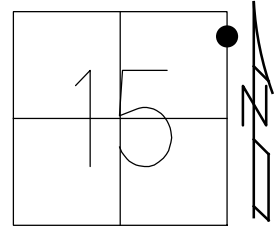


O.D.O.T. DISTRICT 2 SURVEY OFFICE (USE ONLY)

PERSONNEL _____ REFERENCE NO. 26 B SHEET 11 OF 11
 NOTES RHOADES DATE 11/22/23 ROUTE SR 53
 H.C. AUBLE WEATHER OVERCAST COUNTY SANDUSKY
 R.C. MILLER TEMP. 39° TOWNSHIP SANDUSKY
 NIESE, ASTON SECTION 15
 DWG BY RHOADES PID 95760 T 5 N R 15 E

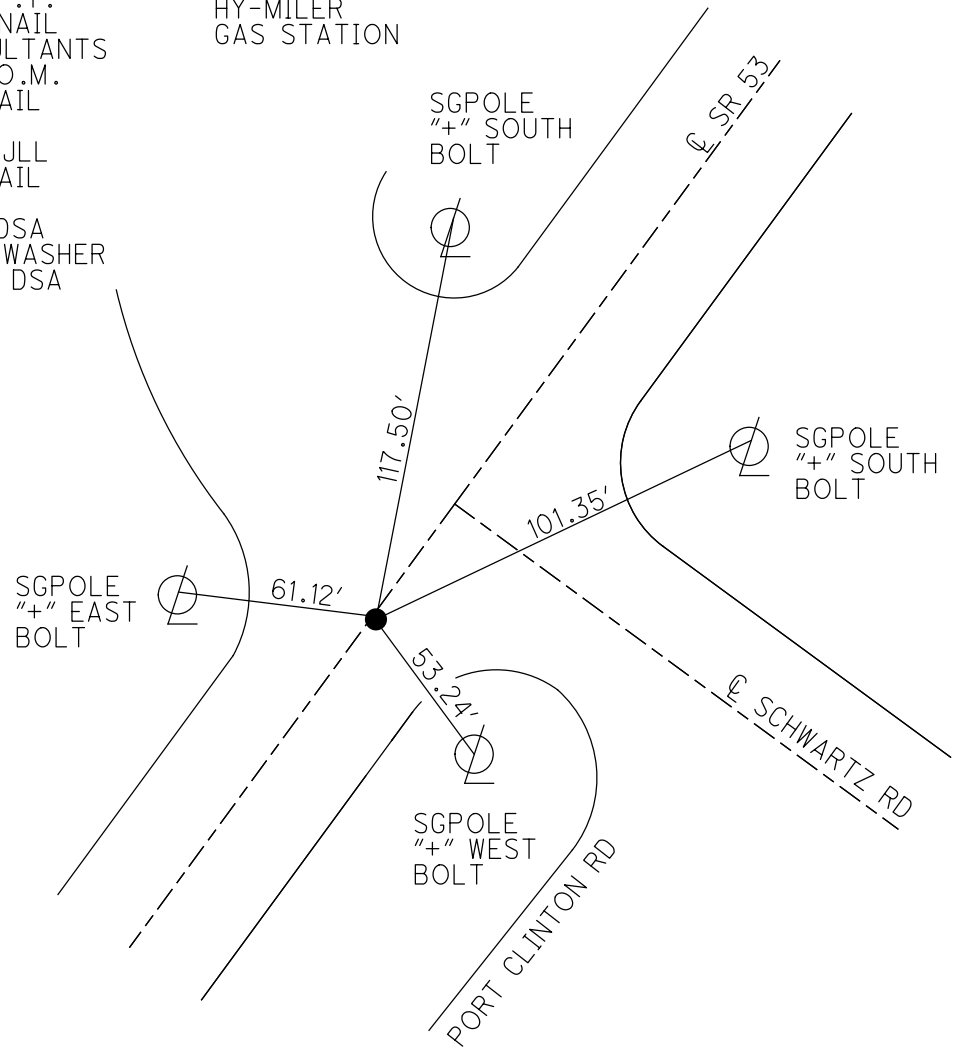
TYPE MONUMENT MAG/WASHER
 ON SURFACE - ~~BELOW~~ ON
 OFFSET \odot PAVEMENT - _____ LT : RT
 _____ TO _____ EDGE PAVEMENT
 STATION: 553+83.28



HORZ.DATUM: NAD83 2011 GEOID: NAVD88 2018
 GRID: NORTHING: 631323.718 EASTING: 1801910.617

RECORD: P.T.
 SET MAG NAIL
 NW CONSULTANTS
 6/15/17, O.M.
 FD MAG NAIL
 REF110
 8/28/17, JLL
 FD MAG NAIL
 REF26B
 8/3/23, DSA
 SET MAG/WASHER
 11/22/23, DSA

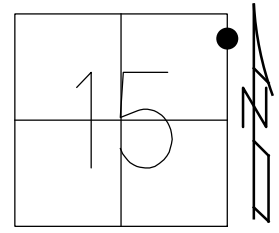
HY-MILER
 GAS STATION



O.D.O.T. DISTRICT 2 SURVEY OFFICE (USE ONLY)

PERSONNEL _____ REFERENCE NO. 26 B SHEET 11 OF 11
NOTES LEU DATE 8/28/17 ROUTE SR 53
H.C. LEU WEATHER FAIR COUNTY SANDUSKY
R.C. FARKAS TEMP. 69° TOWNSHIP SANDUSKY
DWG BY RHOADES PID 101292 SECTION 15
T 5 N R 15 E

TYPE MONUMENT MAG NAIL
ON SURFACE - ~~BELOW~~ ON
OFFSET \varnothing PAVEMENT - LT : RT
- TO - EDGE PAVEMENT
STATION: 553+83.28



HORZ.DATUM: NAD83 2011 GEOID: NAVD88 2012A
GRID: NORTHING: 631323.686 EASTING: 1801910.665

RECORD: P.T.
SET MAG NAIL
NW CONSULTANTS
6/15/17, O.M.
FD MAG NAIL
REF110
8/28/17, JLL

