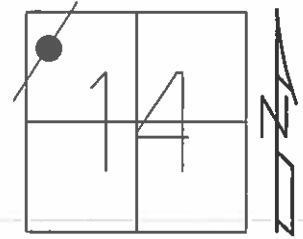


O.D.O.T. DISTRICT 2 SURVEY OFFICE (USE ONLY)

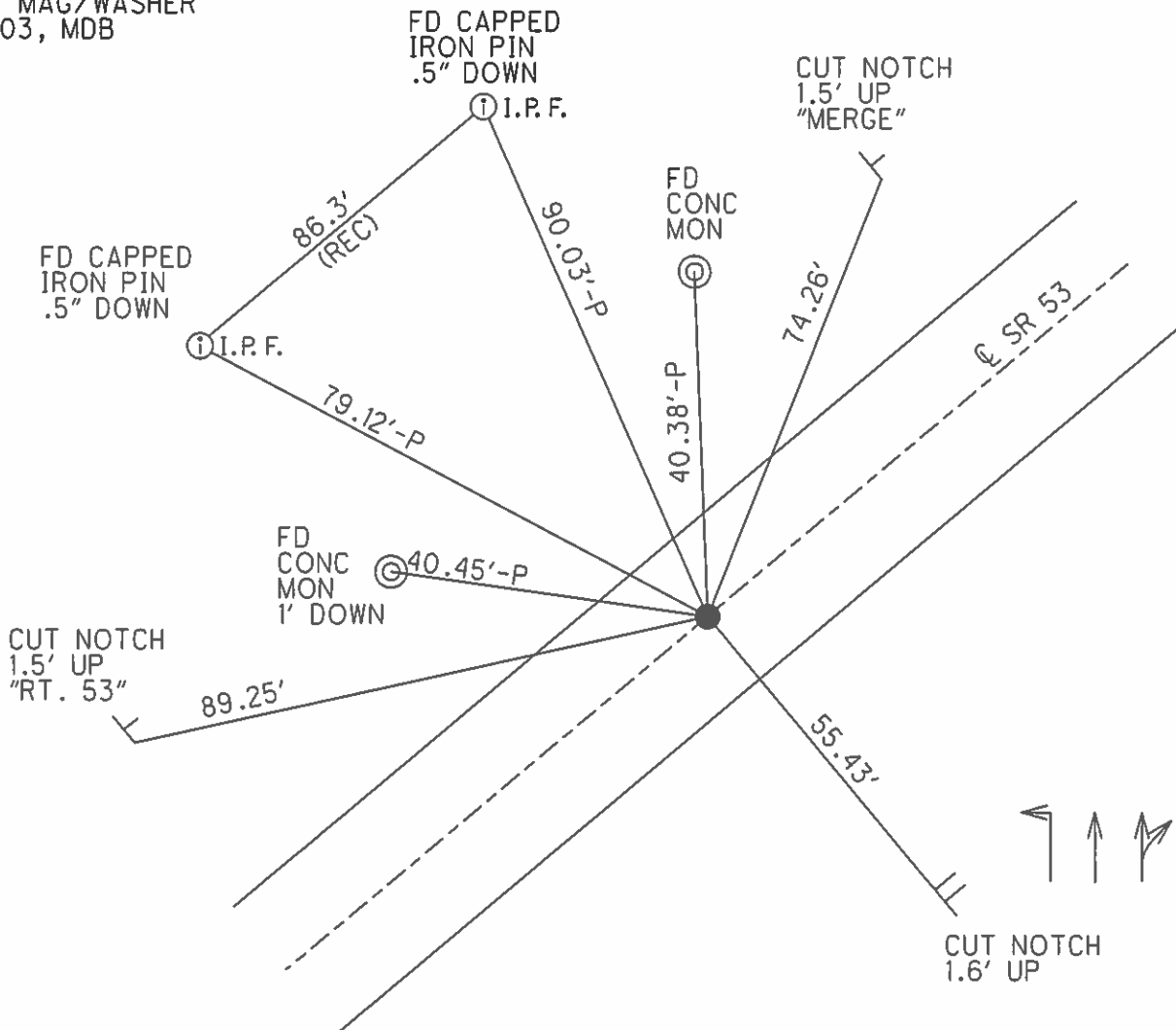
PERSONNEL	REFERENCE NO.	<u>27</u>	SHEET	<u>1</u>	OF	<u>19</u>
NOTES	<u>BARNHISEL</u>	DATE	<u>3/20/03</u>	ROUTE	<u>SR 53</u>	
H.C.	<u>BARNHISEL</u>	WEATHER	<u>SUNNY</u>	COUNTY	<u>SANDUSKY</u>	
R.C.	<u>HOMAN</u>	TEMP.	<u>50°</u>	TOWNSHIP	<u>SANDUSKY</u>	
	<u>RYALL</u>			SECTION	<u>15</u>	
	<u>GLASS</u>			T	<u>5</u>	N
				R	<u>15</u>	E

TYPE MONUMENT P.K. NAIL/WASHER
 ON SURFACE - ~~BELOW~~ ON _____
~~LEFT~~ Q PAV'T - ~~RIGHT~~ ON _____
42.3' TO RT EDGE PAVEMENT
 S.L.M. 677+88



Grid: Northing: _____ Easting: _____

RECORD:
 P.C. 553+85.29
 RESET MAG/WASHER
 8/19/03, MDB



O.D.O.T. DISTRICT 2 SURVEY OFFICE

PERSONNEL

REFERENCE NO. 27

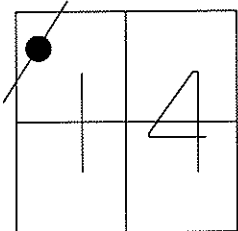
SHEET 1 OF 18

NOTES BARNHISEL
 H.C. BARNHISEL
 R.C. HOMAN
RYALL
GLASS

DATE 3-20-03
 WEATHER SUNNY
 TEMP. 50°

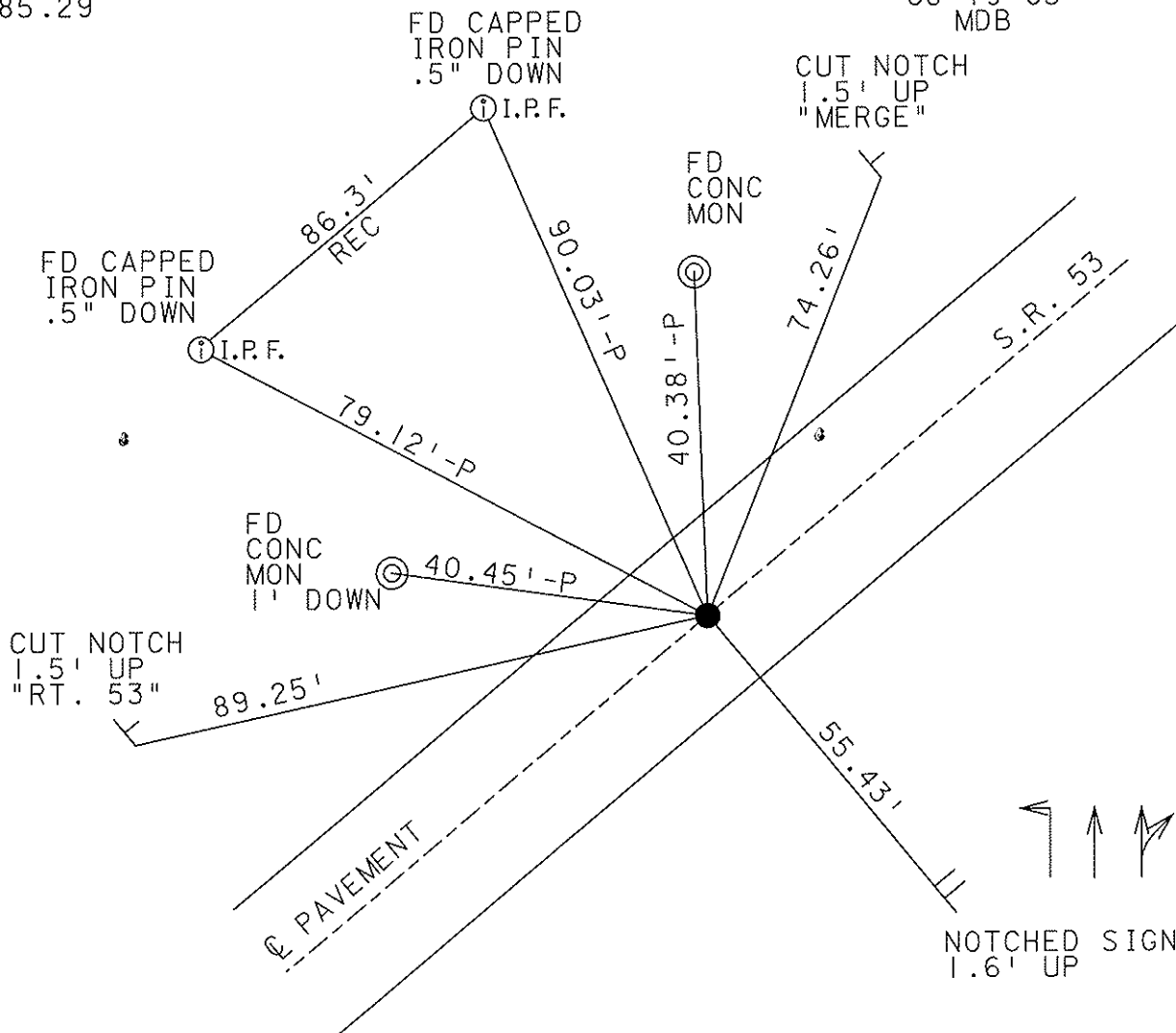
ROUTE S.R. 53
 COUNTY SANDUSKY
 TOWNSHIP SANDUSKY
 SECTION 14
T 5 N R 15 E

TYPE MONUMENT PK NAIL & WASHER
 ON SURFACE - ~~BELOW~~ YES
~~LEFT - Q PAV'T - RIGHT~~ YES
42.3' TO RT EDGE PAVEMENT
 S.L.M. 677+88



RECORD:
 P.C.
 553+85.29

RESET MAG NAIL & WASHER
 08-19-03
 MDB



O.D.O.T. DISTRICT 2 SURVEY OFFICE

PERSONNEL _____

REFERENCE NO. _____

SHEET 1 OF 3

NOTES Barbour

H.C. Geyman

R.C. _____

DATE 9-6-90

WEATHER SUNNY

TEMP. 90°

ROUTE #53

COUNTY SANDUSKY

TOWNSHIP SANDUSKY

SECTION 14

T 5 N R 15 E

TYPE MONUMENT Set P.K. Nail & Washer

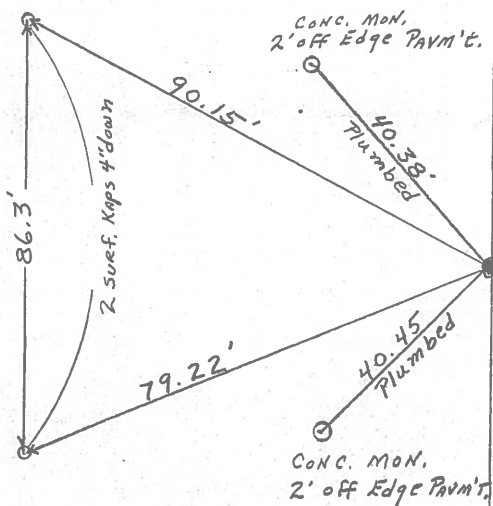
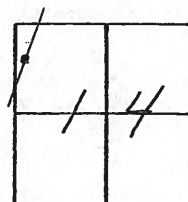
ON SURFACE - BELOW P.K. Nail & Washer

LEFT - ℄ PAV'T. - RIGHT ℄ PAVM'T.

_____ TO _____ EDGE PAVEMENT

S.L.M. _____

27



P.C.
553 + 85.29

County Sandusky

Date 9-5-78

Township Sandusky

Weather Fair

Section 53-7.67

Temp. 75°

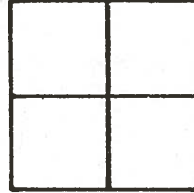
T N, R E

Personnel Schneider

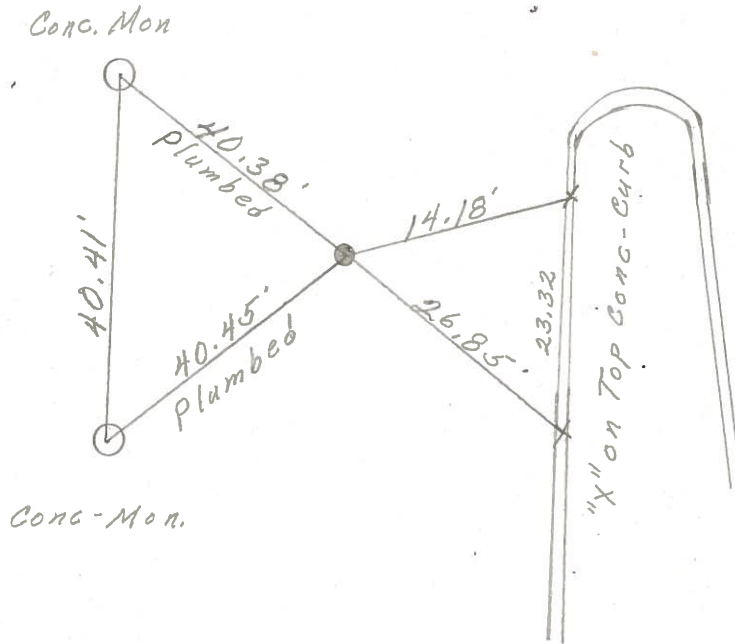
Barbour

Geyman

27



P.C.
553+85.29
P.K. Nail
set after
Black top
1973



PERSONNEL TITLE PERSONNEL TITLE

COUNTY Sandusky DATE Feb. 1968

Schneider _____ Potts _____

S. R. # 53 WEATHER _____

Mosser _____

SEC. North of Fremont TEMP. _____

Barbour _____

Redding _____

DESCRIPTION Ties for Control Points JOB NO. _____

LEFT CENTER LINE RIGHT

