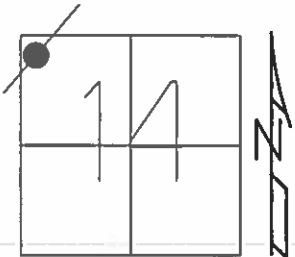


O.D.O.T. DISTRICT 2 SURVEY OFFICE (USE ONLY)

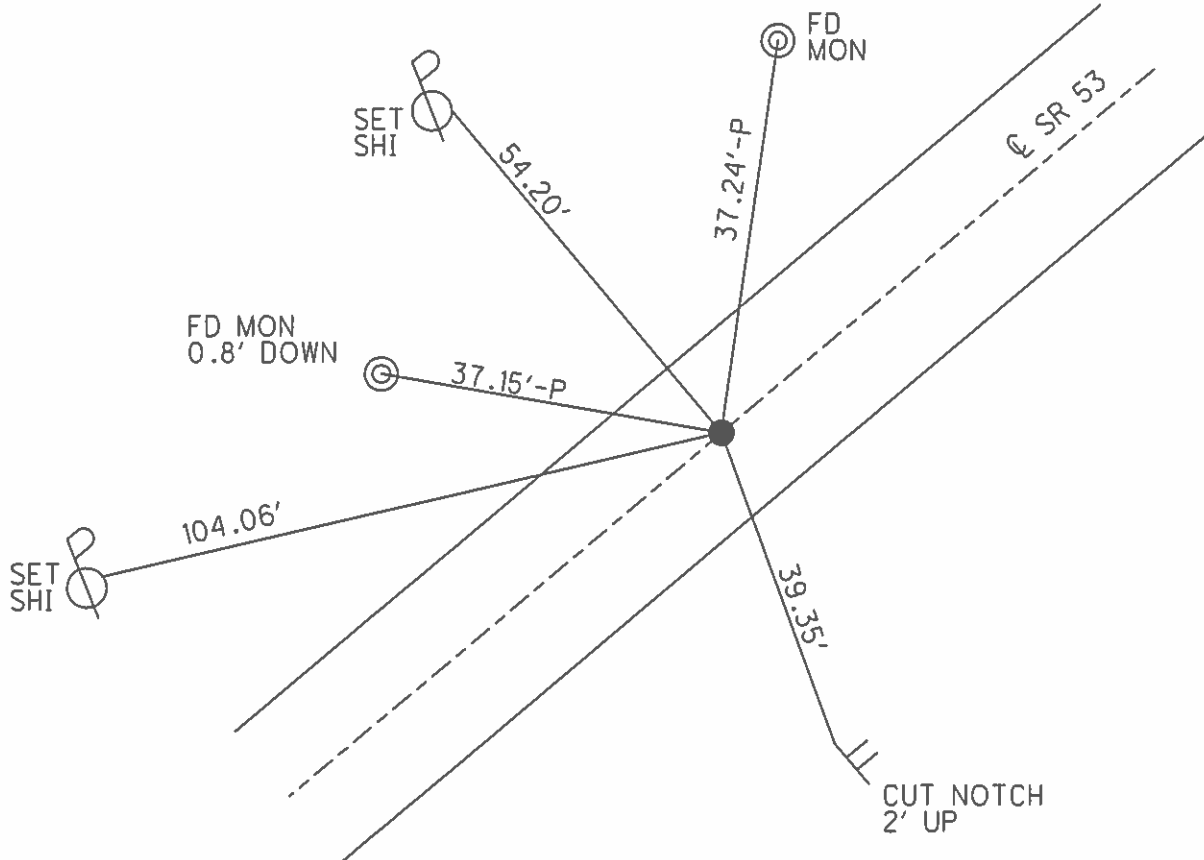
PERSONNEL	REFERENCE NO.	<u>28</u>	SHEET	<u>2</u>	OF	<u>19</u>
NOTES	<u>BARNHISEL</u>	DATE	<u>3/20/03</u>	ROUTE	<u>SR 53</u>	
H.C.	<u>BARNHISEL</u>	WEATHER	<u>SUNNY</u>	COUNTY	<u>SANDUSKY</u>	
R.C.	<u>HOMAN</u>	TEMP.	<u>50°</u>	TOWNSHIP	<u>SANDUSKY</u>	
	<u>RYALL</u>			SECTION	<u>15</u>	
	<u>GLASS</u>			T	<u>5</u>	N
				R	<u>15</u>	E

TYPE MONUMENT "X" CUT CONC MEDIAN  
 ON SURFACE - ~~BELOW~~ ON  
~~LEFT~~ Q PAV'T ~~RIGHT~~ ON  
25.9' TO RT EDGE PAVEMENT  
 S.L.M. 682+38



Grid: Northing: \_\_\_\_\_ Easting: \_\_\_\_\_

RECORD:  
 P.T. 558+35.29



O.D.O.T. DISTRICT 2 SURVEY OFFICE

PERSONNEL

REFERENCE NO. 28

SHEET 2 OF 18

NOTES BARNHISEL

DATE 3-20-03

ROUTE S.R. 53

H.C. BARNHISEL

WEATHER SUNNY

COUNTY SANDUSKY

R.C. HOMAN

TEMP. 50°

TOWNSHIP SANDUSKY

RYALL

SECTION 14

GLASS

T 5 N R 15 E

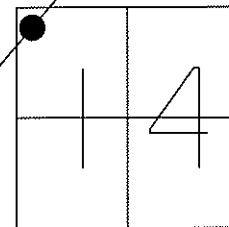
TYPE MONUMENT "X" CUT CONC MEDIAN

ON SURFACE ~~- BELOW~~ YES

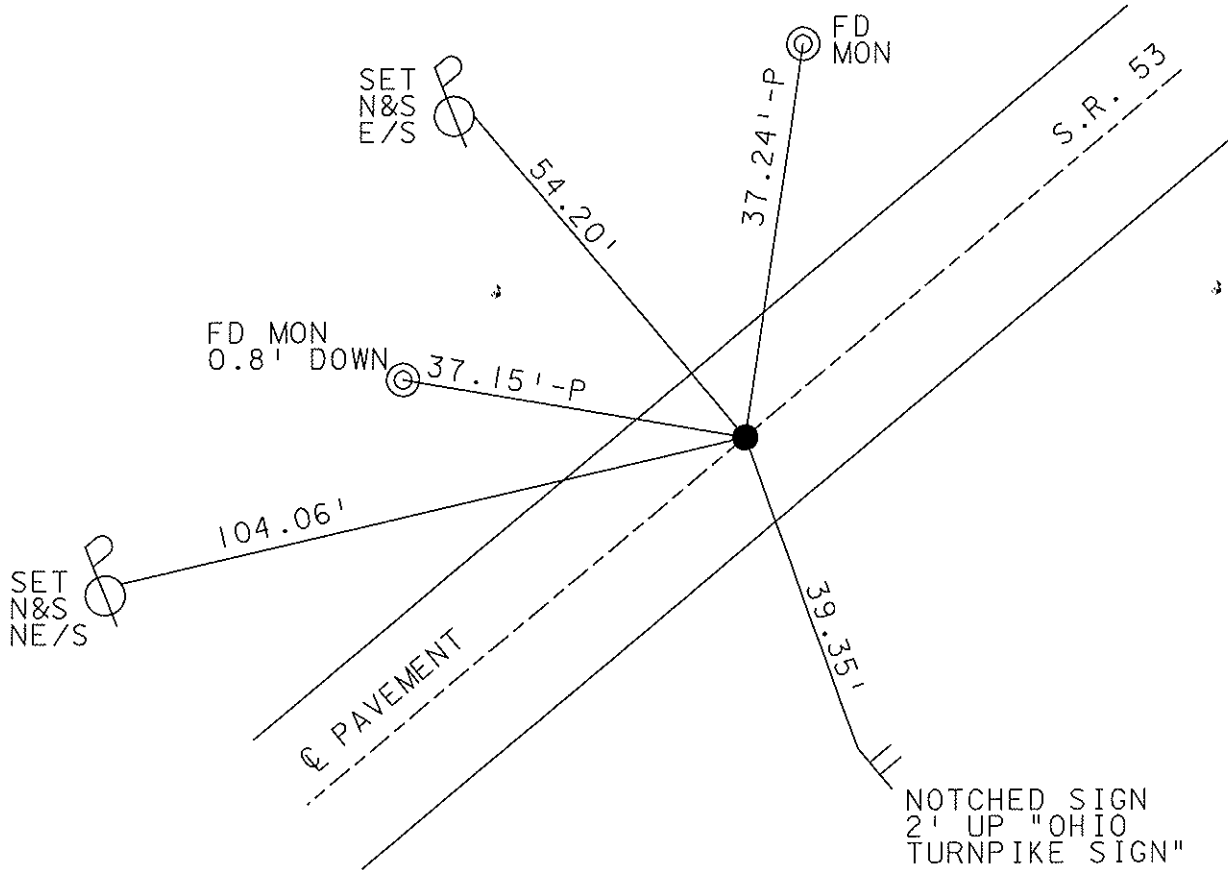
~~LEFT - C PAV'T - RIGHT~~ YES

25.9' TO RT EDGE PAVEMENT

S.L.M. 682+38



RECORD:  
P.T.  
558+35.29



# O.D.O.T. DISTRICT 2 SURVEY OFFICE

PERSONNEL \_\_\_\_\_

REFERENCE NO. \_\_\_\_\_

SHEET 2 OF 3

NOTES Ripple

H.C. BARBOUR

R.C. GAYMAN

DATE 8-30-90

WEATHER SUNNY

TEMP. 82°

ROUTE 53

COUNTY SAND

TOWNSHIP SAND

SECTION 14

T 5 N R 15 E

TYPE MONUMENT X-IN CONC. MEDIAN

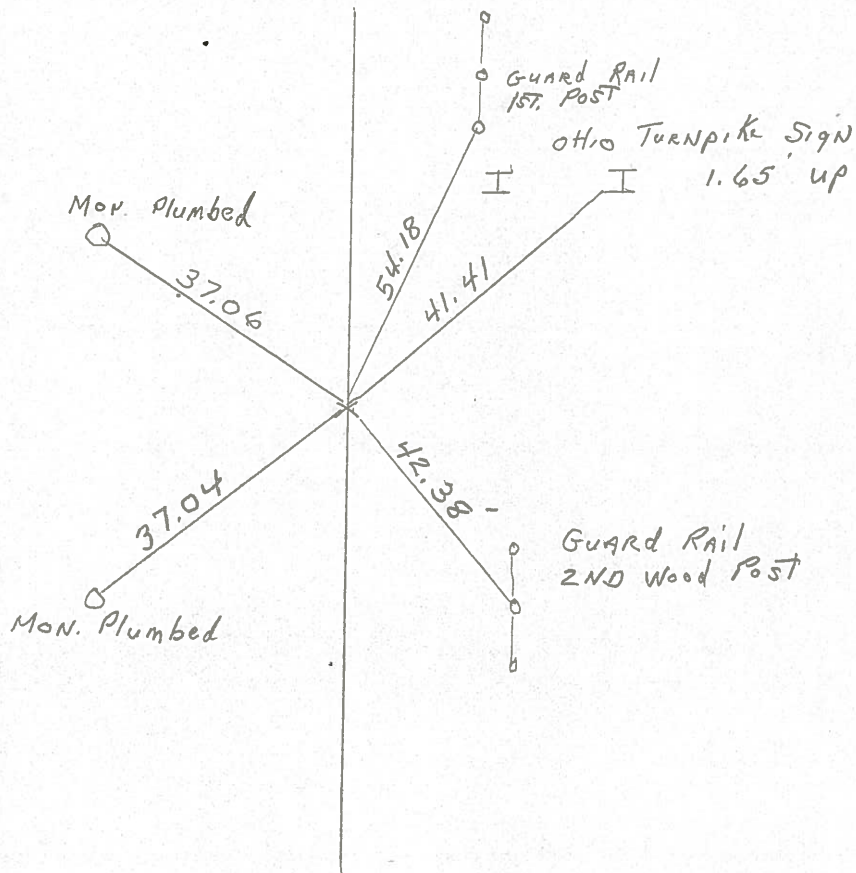
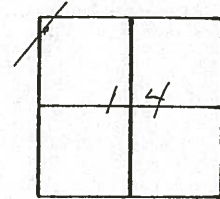
ON SURFACE - BELOW \_\_\_\_\_

LEFT -  $\epsilon$  PAV'T. - RIGHT \_\_\_\_\_

\_\_\_\_\_ TO \_\_\_\_\_ EDGE PAVEMENT

S.L.M. \_\_\_\_\_

28



P.T.  
558 + 35.29

County Sandusky

Date 9-5-78

Township Sandusky

Weather Fair

Section 53-7.67

Temp. 75°

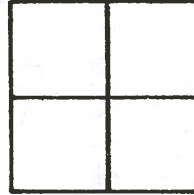
T N, R E

Personnel Schneider

Barbour

Geyman

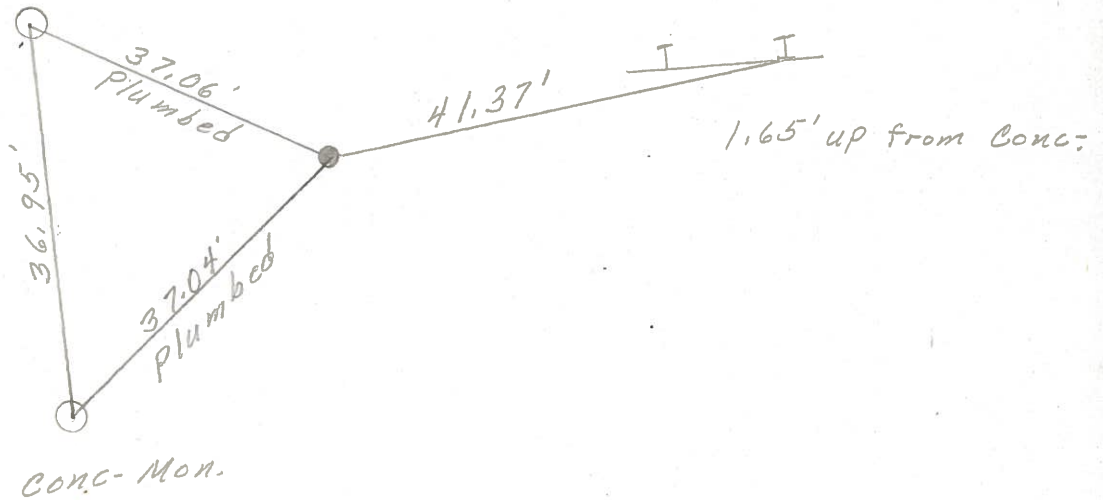
28



P.T. 558+35.29  
"X" in CONC-  
on TOP Median

CONC- Mon

Ohio Turnpike sign



PERSONNEL	TITLE	PERSONNEL	TITLE	COUNTY	DATE
Schneider		Patts		Sandusky	Feb. 1968
Mosser				S. R. #53	WEATHER
Barbour				SEC. North of Fremont	TEMP.
Redding					
DESCRIPTION	Ties for Control Points			JOB NO.	

