

O.D.O.T. DISTRICT 2 SURVEY OFFICE (USE ONLY)

PERSONNEL _____

REFERENCE NO. 29

SHEET 3 OF 19

NOTES AUBLE

DATE 12/14/23

ROUTE SR 53

H.C. AUBLE

WEATHER SUNNY

COUNTY SANDUSKY

R.C. NIESE

TEMP. 32°

TOWNSHIP SANDUSKY

DWG BY RHOADES

PID 95760

SECTION 14

T 5 N R 15 E

TYPE MONUMENT MAG/WASHER

ON SURFACE - BELOW ON

OFFSET ☉ PAVEMENT ON LT : RT

26.1' TO RT EDGE PAVEMENT

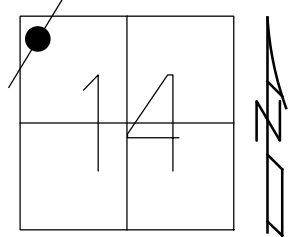
STATION: 684+60

HORIZ.DATUM: _____

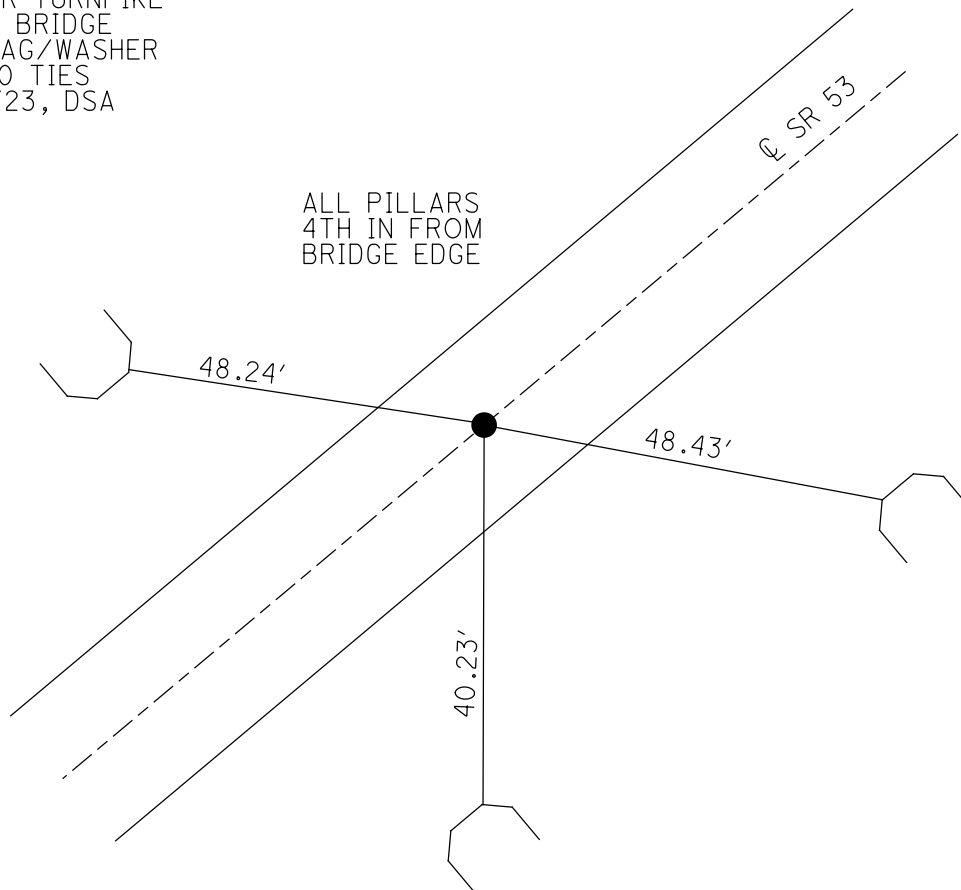
GEOID: _____

GRID: NORTHING: _____

EASTING: _____



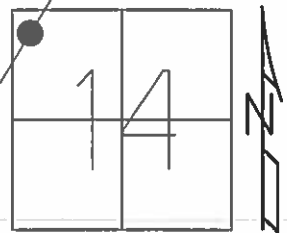
RECORD: P.O.T.
 STA. 560+57.97
 CENTER TURNPIKE
 UNDER BRIDGE
 SET MAG/WASHER
 W/1990 TIES
 12/14/23, DSA



O.D.O.T. DISTRICT 2 SURVEY OFFICE (USE ONLY)

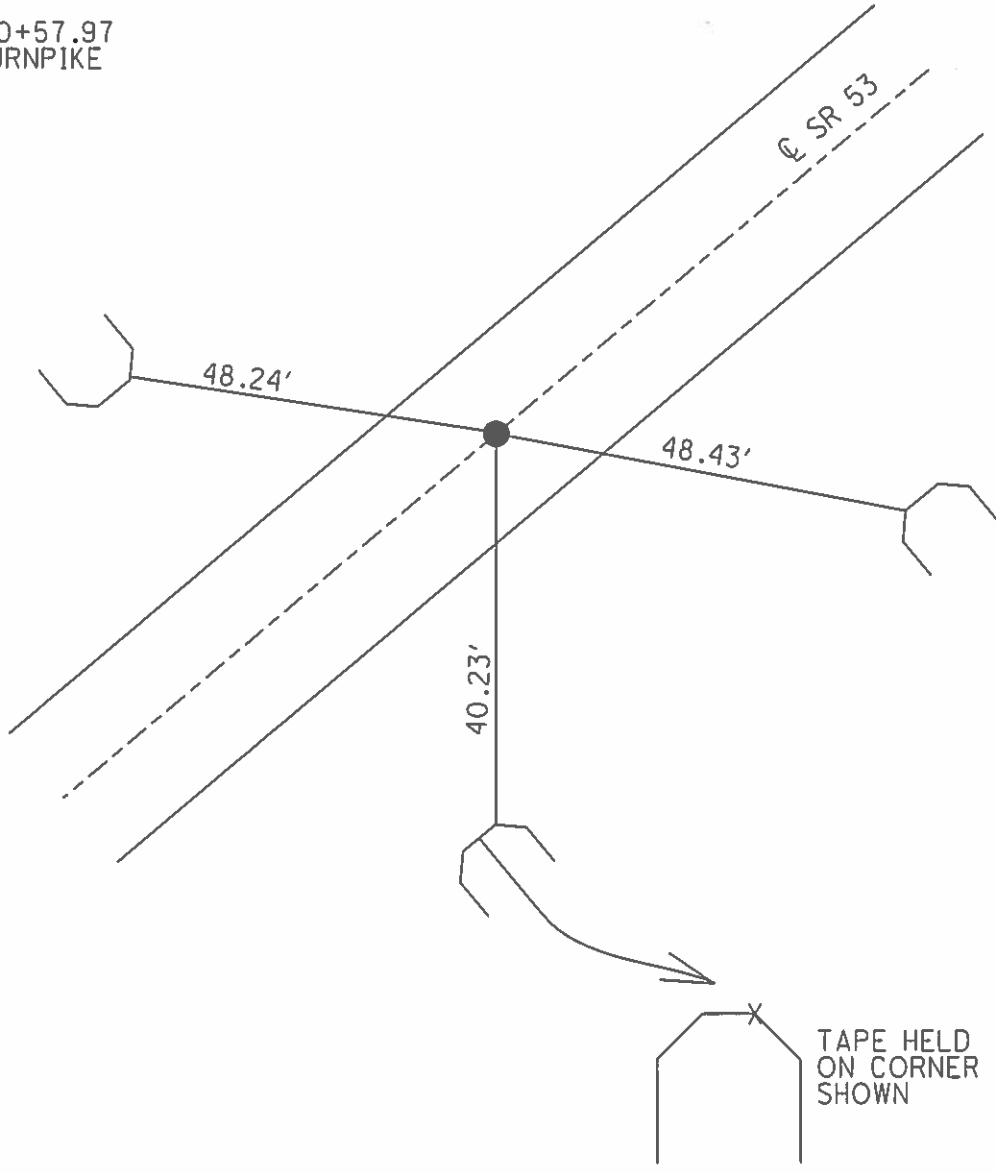
PERSONNEL	REFERENCE NO.	<u>29</u>	SHEET	<u>3</u>	OF	<u>19</u>
NOTES	<u>HOMAN</u>	DATE	<u>3/20/03</u>	ROUTE	<u>SR 53</u>	
H.C.	<u>BARNHISEL</u>	WEATHER	<u>SUNNY</u>	COUNTY	<u>SANDUSKY</u>	
R.C.	<u>GLASS</u>	TEMP.	<u>50°</u>	TOWNSHIP	<u>SANDUSKY</u>	
	<u>RYALL</u>			SECTION	<u>14</u>	
				T	<u>5</u>	N
				R	<u>15</u>	E

TYPE MONUMENT "X" CUT CONC MEDIAN
 ON SURFACE - ~~BELOW~~ ON _____
~~LEFT~~ Q PAV'T ~~RIGHT~~ ON _____
26.1' TO RT EDGE PAVEMENT
 S.L.M. 684+60



Grid: Northing: _____ Easting: _____

RECORD:
 P.O.T. 560+57.97
 CENTER TURNPIKE



O.D.O.T. DISTRICT 2 SURVEY OFFICE

PERSONNEL

REFERENCE NO. 29

SHEET 3 OF 10

NOTES HOMAN

DATE 3-20-03

ROUTE S.R. 53

H.C. BARNHISEL

WEATHER SUNNY

COUNTY SANDUSKY

R.C. GLASS

TEMP. 50°

TOWNSHIP SANDUSKY

RYALL

SECTION 14

T 5 N R 15 E

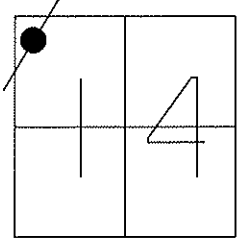
TYPE MONUMENT "X" CUT CONC MEDIAN

ON SURFACE - ~~BELOW~~ YES

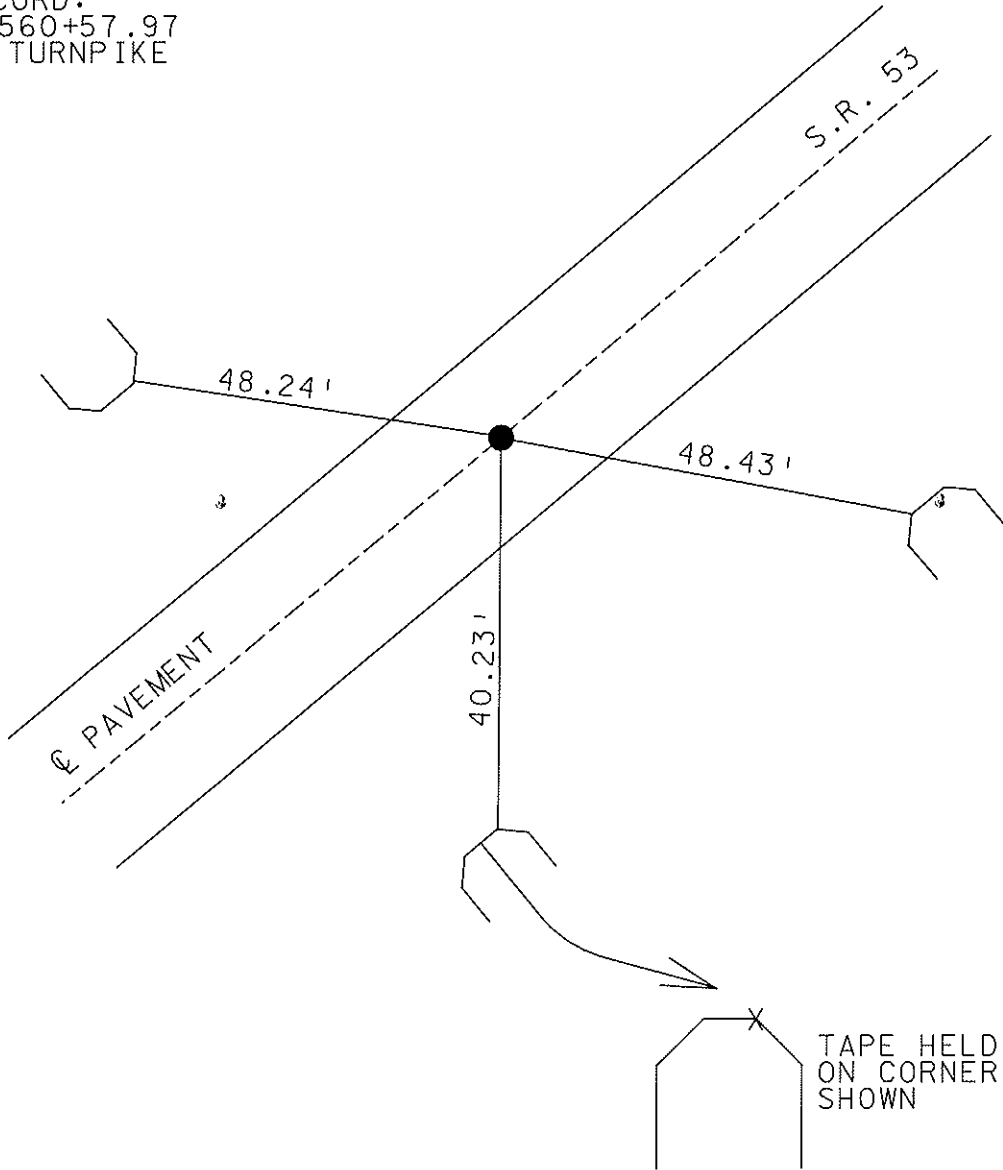
~~LEFT - C PAV'T - RIGHT~~ YES

26.11' TO RT EDGE PAVEMENT

S.L.M. 684+60



RECORD:
P.O.T. 560+57.97
CENTER TURNPIKE



O.D.O.T. DISTRICT 2 SURVEY OFFICE

PERSONNEL _____

REFERENCE NO. 29

SHEET 3 OF 3

NOTES Rippe

H.C. BARBOUR

DATE 8-30-90

ROUTE 53

R.C. GEYMAN

WEATHER SUNNY

COUNTY SAND

TEMP. 80°

TOWNSHIP SAND

SECTION 14

T 5 N R 15 E

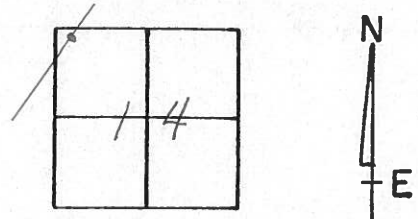
TYPE MONUMENT X-IN CONC. MEDIAN

ON SURFACE - BELOW _____

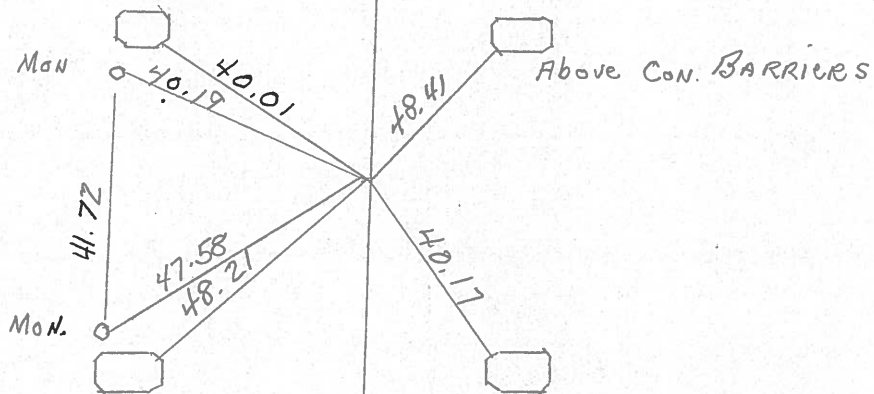
LEFT- & PAV'T. - RIGHT _____

TO _____ EDGE PAVEMENT

S.L.M. _____



Br. Pier Posts



POT

560 + 57.97

CENTER TURNPIKE

PERSONNEL	TITLE	PERSONNEL	TITLE	COUNTY	DATE	WEATHER	TEMP.
Schneider		Potts		Sandusky	Feb. 1968		
Mosser				S. R. #53			
Barbour				SEC. North of Fremont			
Redding							
DESCRIPTION	Ties for Control Points			JOB NO.			

