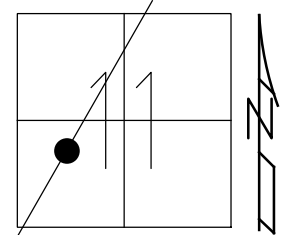


O.D.O.T. DISTRICT 2 SURVEY OFFICE (USE ONLY)

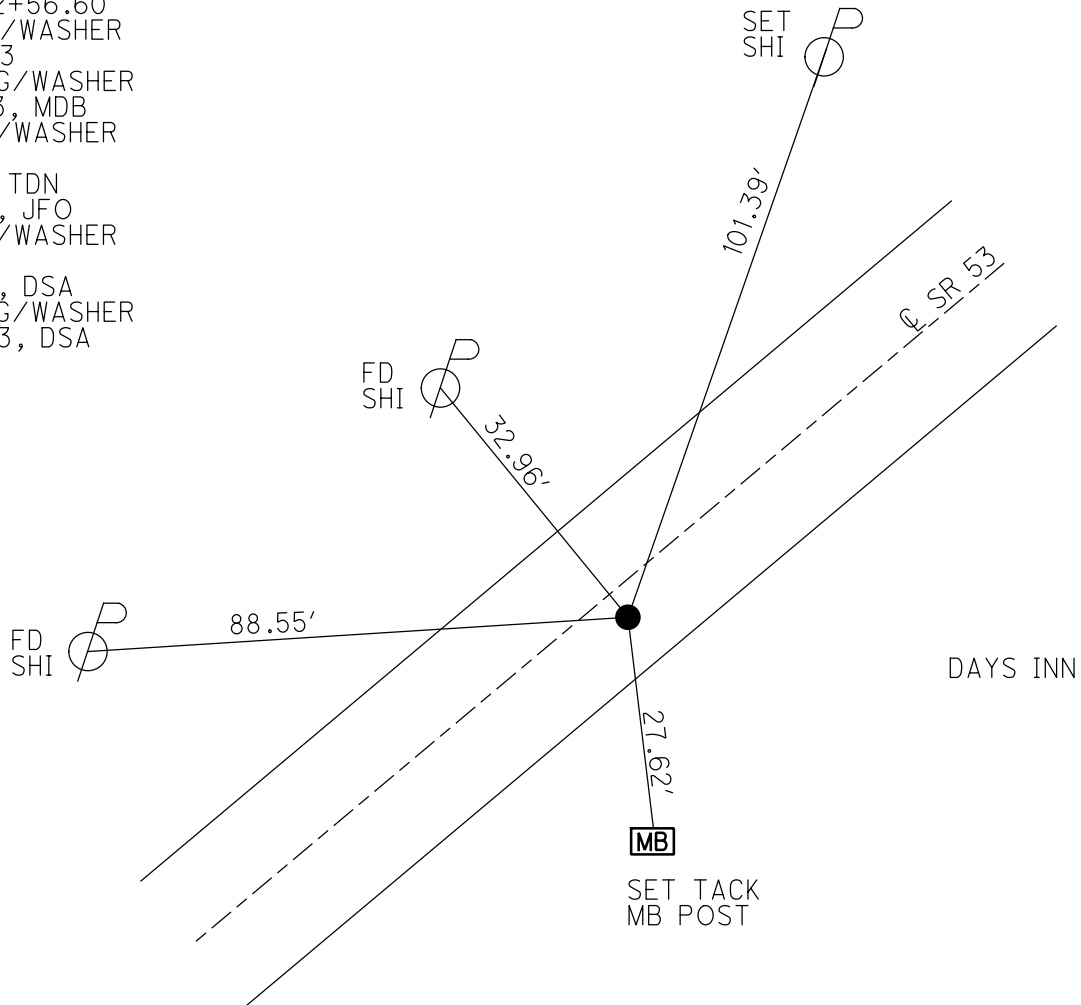
PERSONNEL _____ REFERENCE NO. 30 SHEET 4 OF 19
 NOTES RHOADES DATE 11/22/23 ROUTE SR 53
 H.C. AUBLE WEATHER OVERCAST COUNTY SANDUSKY
 R.C. MILLER TEMP. 39° TOWNSHIP RICE
 _____ NIESE, ASTON SECTION 11
 DWG BY RHOADES PID 95760 T 5 N R 15 E

TYPE MONUMENT MAG/WASHER
 ON SURFACE - ~~BELOW~~ ON
 OFFSET 15.9' TO LT EDGE PAVEMENT
 STATION: 708+10



HORZ. DATUM: NAD83 2011 GEOID: NAVD88 2018
 GRID: NORTHING: 633877.749 EASTING: 1803510.482

RECORD: P.I.
 $\Delta = 02^{\circ} 39' LT$
 STA. 582+56.60
 FD P.K./WASHER
 3/20/03
 SET MAG/WASHER
 8/19/03, MDB
 FD MAG/WASHER
 REF30
 6/1/21, TDN
 4/7/22, JFO
 FD MAG/WASHER
 REF30
 8/3/23, DSA
 SET MAG/WASHER
 11/22/23, DSA



O.D.O.T. DISTRICT 2 SURVEY OFFICE (USE ONLY)

PERSONNEL

REFERENCE NO. 30

SHEET 4 OF 19

NOTES HOMAN
 H.C. BARNHISEL
 R.C. GLASS
RYALL

DATE 3/20/03
 WEATHER SUNNY
 TEMP. 50°

ROUTE SR 53
 COUNTY SANDUSKY
 TOWNSHIP RICE
 SECTION 11
T 5 N R 15 E

DWG BY RHOADES PID PVTRAIN

TYPE MONUMENT P.K./WASHER

ON SURFACE - ~~BELOW~~ ON

OFFSET \odot PAVEMENT 2.1' \pm : RT

15.9' TO LT EDGE PAVEMENT

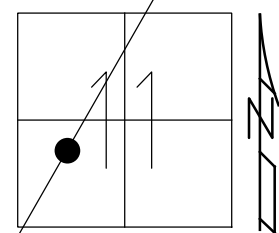
STATION: 708+10

HORZ. DATUM: NAD83 2011

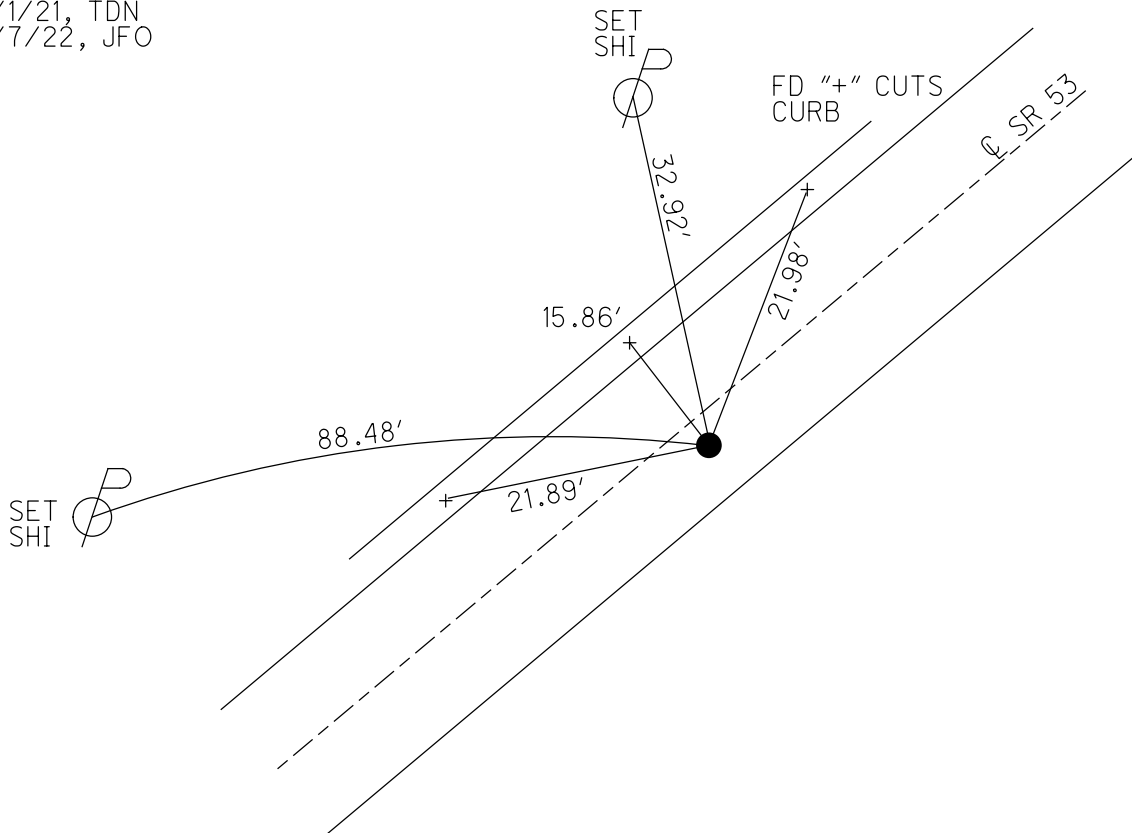
GEOID: NAVD88 2018

GRID: NORTHING: 633877.871

EASTING: 1803510.506



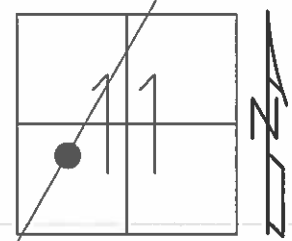
RECORD: P.I.
 $\Delta = 02^\circ 39' \text{ LT}$
 STA. 582+56.60
 FD P.K./WASHER
3/20/03
 SET MAG/WASHER
8/19/03, MDB
 FD MAG/WASHER
 REF30
6/1/21, TDN
4/7/22, JFO



O.D.O.T. DISTRICT 2 SURVEY OFFICE (USE ONLY)

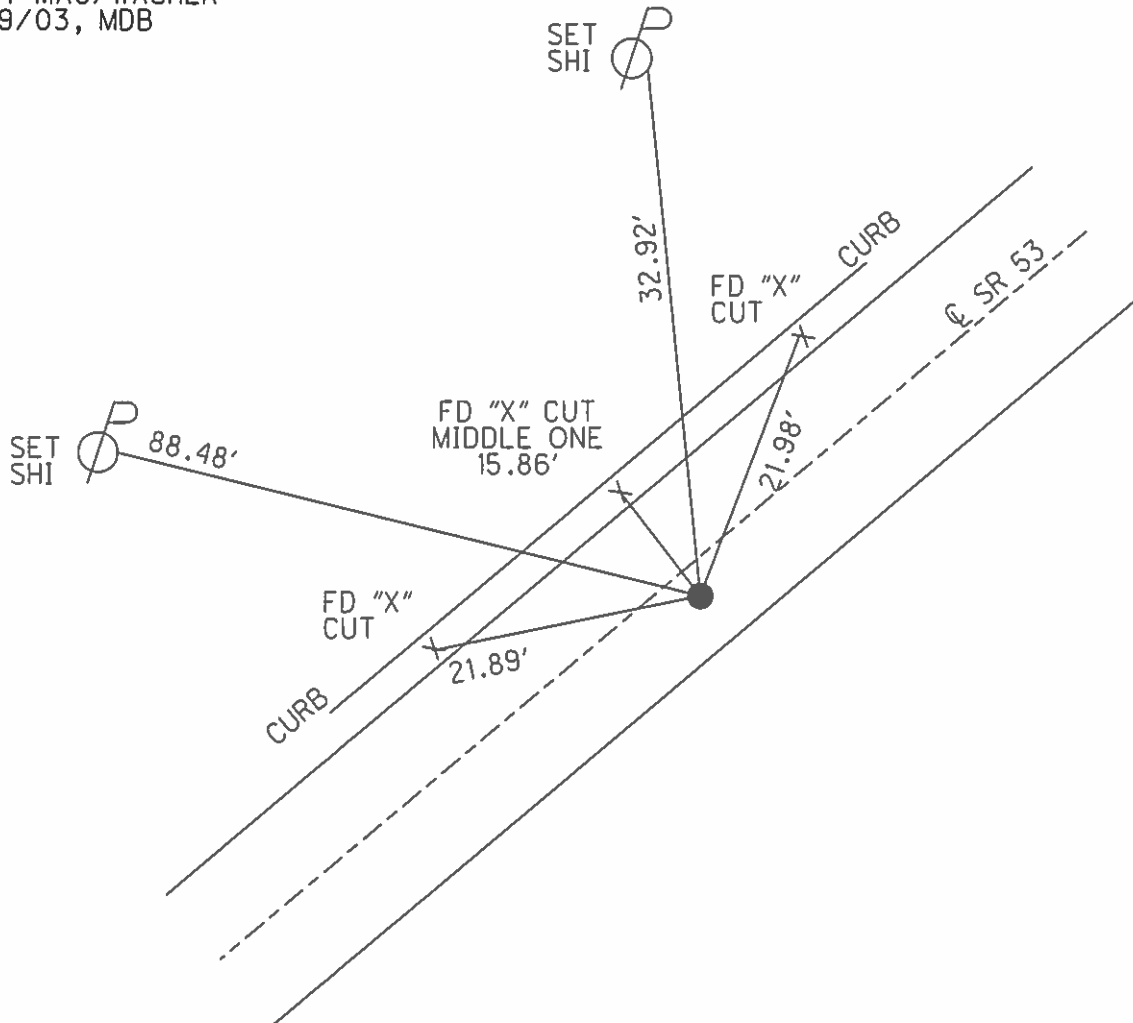
PERSONNEL	REFERENCE NO.	<u>30</u>	SHEET	<u>4</u>	OF	<u>19</u>
NOTES	HOMAN	DATE	<u>3/20/03</u>	ROUTE	<u>SR 53</u>	
H.C.	BARNHISEL	WEATHER	<u>SUNNY</u>	COUNTY	<u>SANDUSKY</u>	
R.C.	GLASS	TEMP.	<u>50°</u>	TOWNSHIP	<u>RICE</u>	
	RYALL			SECTION	<u>11</u>	
				T	<u>5</u>	N
				R	<u>15</u>	E

TYPE MONUMENT P.K. NAIL/WASHER
 ON SURFACE - ~~BELOW~~ YES
~~LEFT~~ - CL PAV'T - RIGHT 2.1'
15.9' TO LT EDGE PAVEMENT
 S.L.M. 708+10



Grid: Northing: _____ Easting: _____

RECORD:
 P.I. SURV & CONST
 $\Delta = 02^\circ 39' \text{ LT}$
 582+56.60
 RESET MAG/WASHER
 08/19/03, MDB



O.D.O.T. DISTRICT 2 SURVEY OFFICE

PERSONNEL

REFERENCE NO. 30

SHEET 4 OF 18

NOTES HOMAN

DATE 3-20-03

ROUTE S.R. 53

H.C. BARHISEL

WEATHER SUNNY

COUNTY SANDUSKY

R.C. GLASS

TEMP. 50°

TOWNSHIP RICE

RYALL

SECTION 11

T 5 N R 15 E

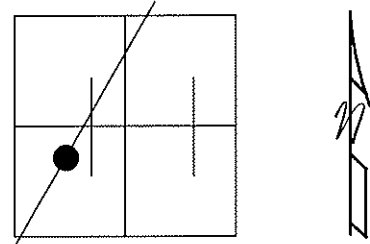
TYPE MONUMENT PK NAIL & WASHER

ON SURFACE - ~~BELOW~~ YES

~~LEFT - C~~ PAV'T - RIGHT 2.1'

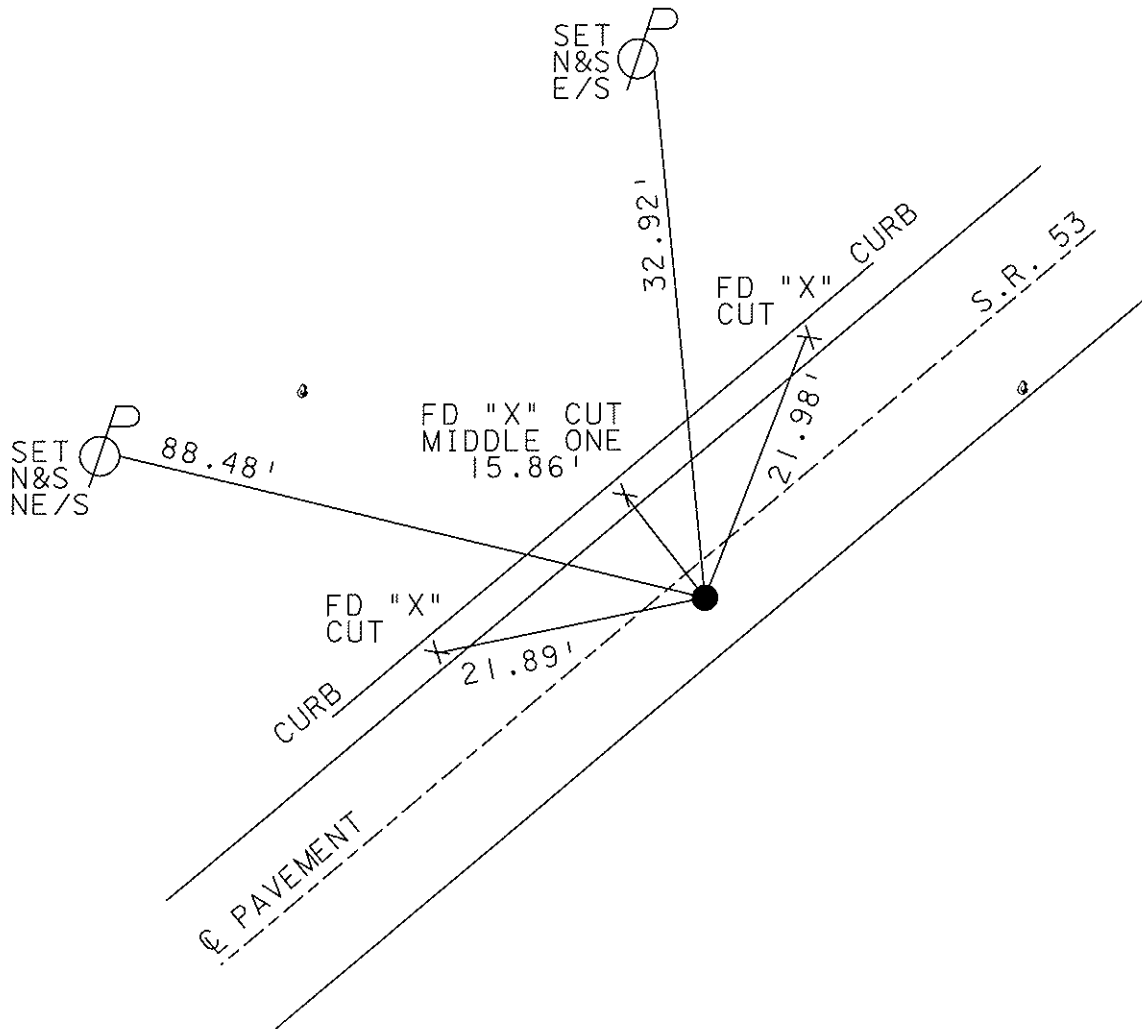
15.9' TO LT curb ~~EDGE PAVEMENT~~

S.L.M. 708+10



RECORD:
P.I. SURV & CONST
DELTA = 02° 39' LT
582+56.60

RESET MAG NAIL & WASHER
08-19-03
MDB



O.D.O.T. DISTRICT 2 SURVEY OFFICE

PERSONNEL _____

REFERENCE NO. _____

SHEET 1 OF 15

NOTES Ripple

H.C. BARBOUR

DATE 8/30/90

ROUTE SR # 53

R.C. Geyman

WEATHER SUNNY

COUNTY SANDUSKY

TEMP. 72°

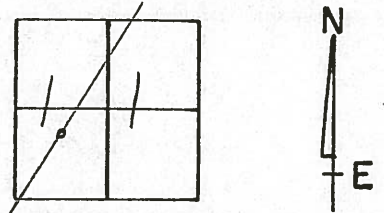
TOWNSHIP Rice

SECTION 11

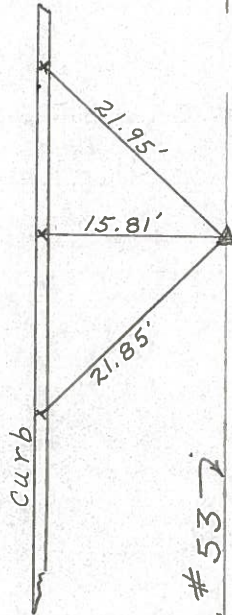
T 5 N R 15 E

TYPE MONUMENT Set P.K. & washer
 ON SURFACE - BELOW P.K. & washer ATop RR. spike
 LEFT - CL PAV'T. - RIGHT 1' RT. & PAV'T.
 TO _____ EDGE PAVEMENT
 S.L.M. _____

30



P.I. - Sur & Const.
 $\Delta = 02^{\circ} 39' \text{ LT.}$
582 + 56.60



CL S.R. # 53

County Sandusky S.R. # 53

Township Rice

Section 11

T5N, R15E

Personnel Cronin

Ripple

Geyman

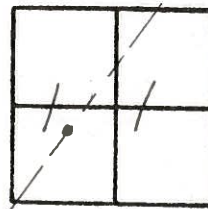
Barbour

Date 11/17/83 (Drawn 11/18/83)

Weather overcast

Temp. 37°

30

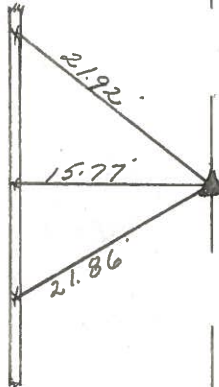


P.I. - Sur. Const

Δ = 02° 39' Lt

582 + 56.60

set P.K. & washer atop
P.L. Spike - 1 ft. & Laurit



2 S.R. # 53

County Sandusky

Date 9-5-78

Township Sandusky

Weather Fair

Section 53-7.67

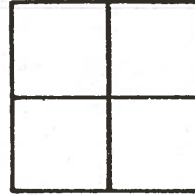
Temp. 75°

T N, R E

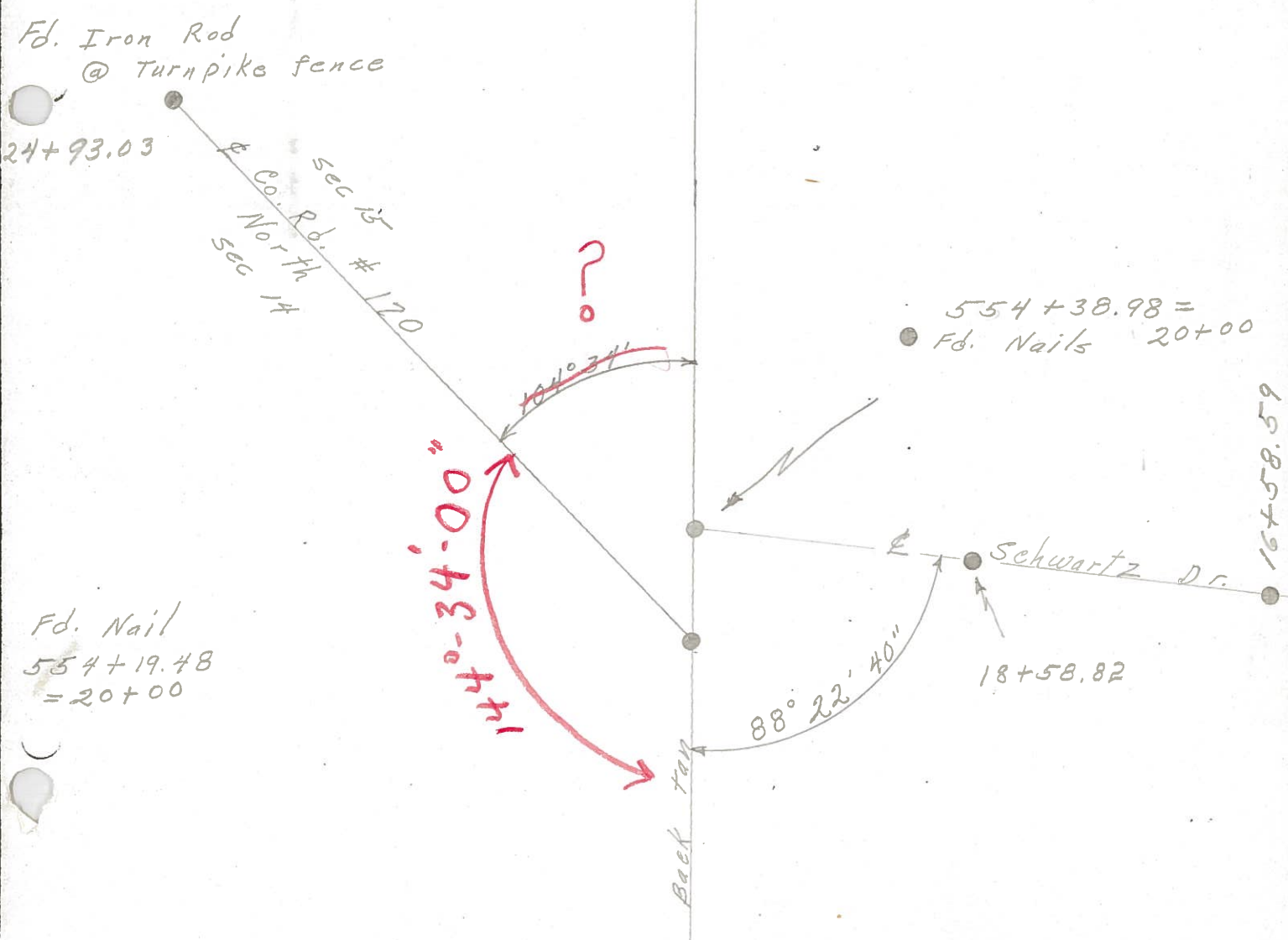
Personnel Schneider

Barbour

Geyman



30



Fd. Nail
554+19.48
= 20+00