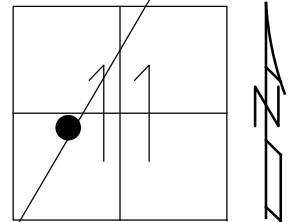


O.D.O.T. DISTRICT 2 SURVEY OFFICE (USE ONLY)

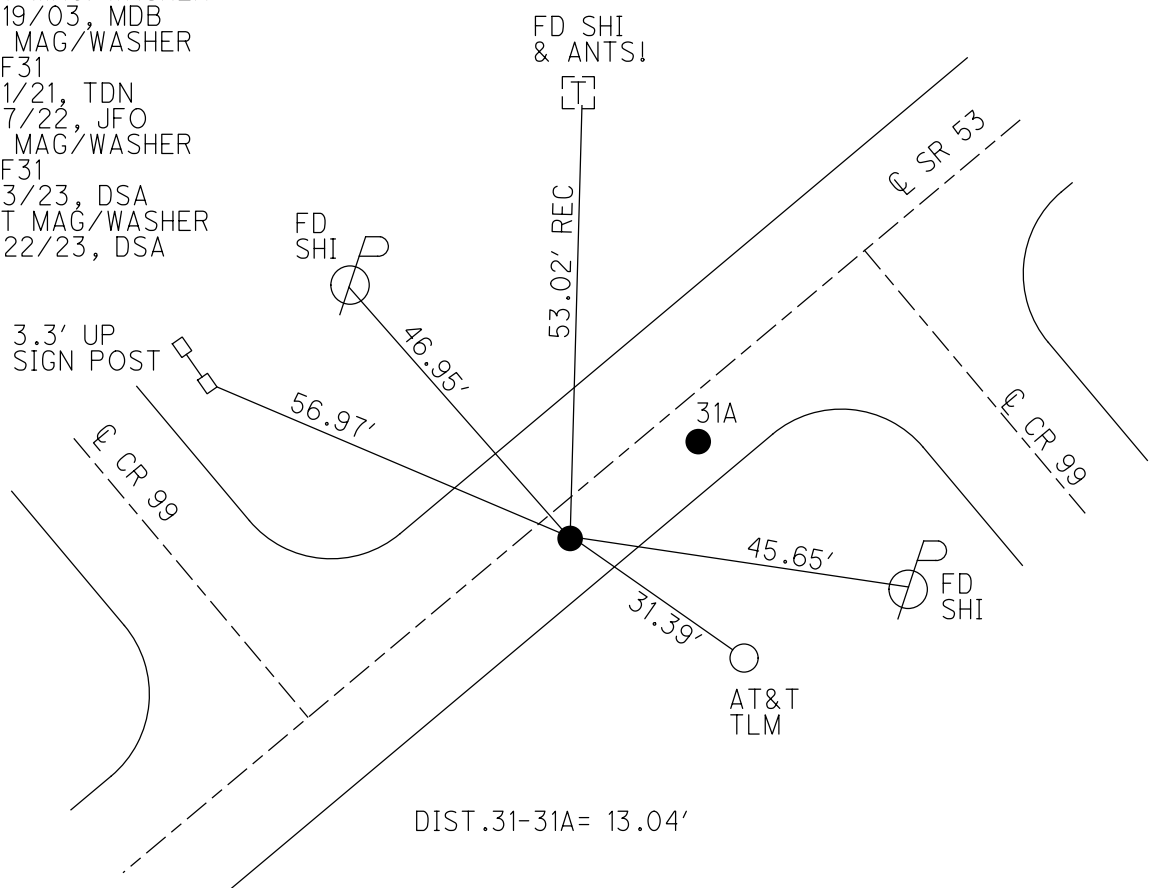
PERSONNEL _____ REFERENCE NO. 31 SHEET 5 OF 19
 NOTES RHOADES DATE 11/22/23 ROUTE SR 53
 H.C. AUBLE WEATHER OVERCAST COUNTY SANDUSKY
 R.C. MILLER TEMP. 39° TOWNSHIP RICE
 NIESE, ASTON SECTION 11
 DWG BY RHOADES PID 95760 T 5 N R 15 E

TYPE MONUMENT MAG/WASHER
 ON SURFACE - ~~BELOW~~ ON
 OFFSET \odot PAVEMENT 5.6' ~~RT~~ : RT
17.9' TO LT EDGE PAVEMENT
 STATION: 716+19



HORIZ.DATUM: NAD83 2011 GEOID: NAVD88 2018
 GRID: NORTHING: 634593.893 EASTING: 1803882.091

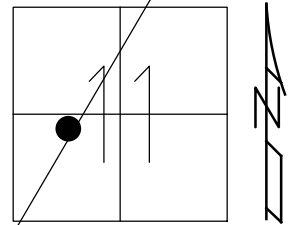
RECORD: P.I.
 $\Delta=05^{\circ} 10'$ LT
 FD R.R.SPIKE
 3/20/03
 SET P.K. NAIL
 SET MAG/WASHER
 8/19/03, MDB
 FD MAG/WASHER
 REF31
 6/1/21, TDN
 4/7/22, JFO
 FD MAG/WASHER
 REF31
 8/3/23, DSA
 SET MAG/WASHER
 11/22/23, DSA



O.D.O.T. DISTRICT 2 SURVEY OFFICE (USE ONLY)

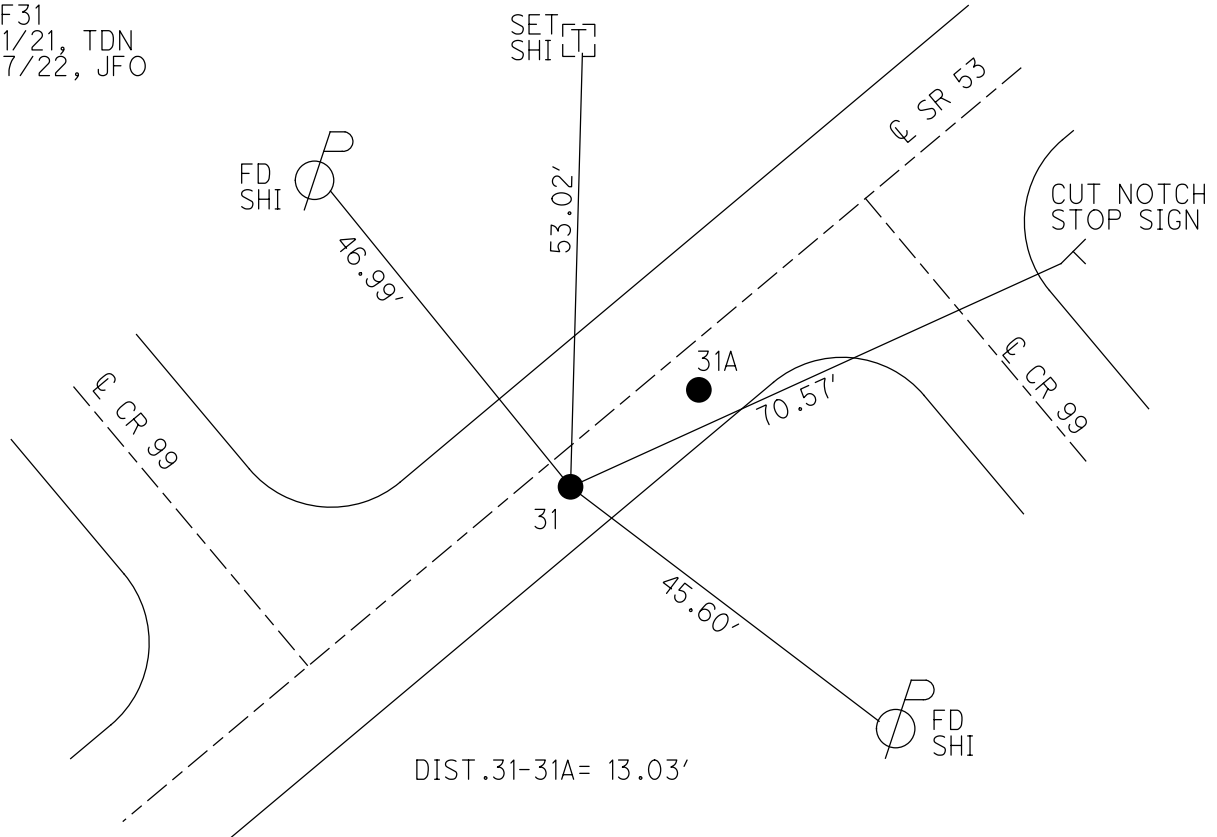
PERSONNEL _____ REFERENCE NO. 31 SHEET 5 OF 19
 NOTES HOMAN DATE 3/20/03 ROUTE SR 53
 H.C. BARNHEISEL WEATHER SUNNY COUNTY SANDUSKY
 R.C. GLASS TEMP. 50° TOWNSHIP RICE
 RYALL SECTION 11
 DWG BY RHOADES PID PVTRAIN T 5 N R 15 E

TYPE MONUMENT R.R.SPIKE
 ON SURFACE - ~~BELOW~~ ON
 OFFSET ϕ PAVEMENT 5.6' RT
17.9' TO LT EDGE PAVEMENT
 STATION: 716+19



HORZ.DATUM: NAD83 2011 GEOID: NAVD88 2018
 GRID: NORTHING: 634593.966 EASTING: 1803882.148

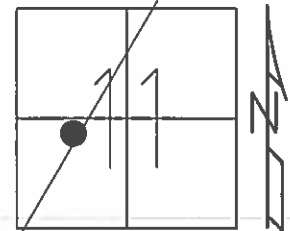
RECORD: P.I.
 $\Delta=05^{\circ} 10' LT$
 FD R.R.SPIKE
 3/20/03
 SET P.K. NAIL
 SET MAG/WASHER
 8/19/03, MDB
 FD MAG/WASHER
 REF31
 6/1/21, TDN
 4/7/22, JFO



O.D.O.T. DISTRICT 2 SURVEY OFFICE (USE ONLY)

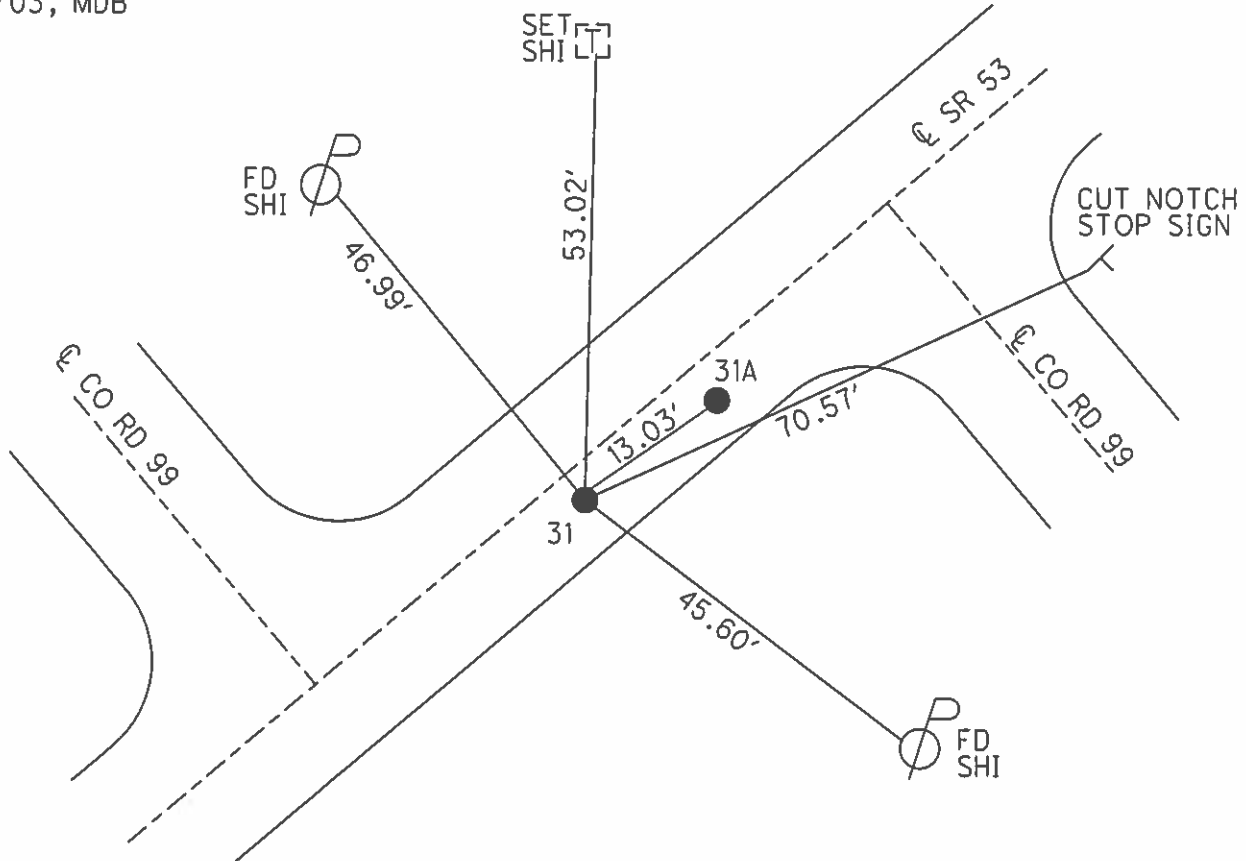
PERSONNEL	REFERENCE NO.	<u>31</u>	SHEET	<u>5</u>	OF	<u>19</u>
NOTES	HOMAN	DATE	<u>3/20/03</u>	ROUTE	<u>SR 53</u>	
H.C.	BARNHISEL	WEATHER	<u>SUNNY</u>	COUNTY	<u>SANDUSKY</u>	
R.C.	GLASS	TEMP.	<u>50°</u>	TOWNSHIP	<u>RICE</u>	
	RYALL			SECTION	<u>11</u>	
				<u>T 5 N R 15 E</u>		

TYPE MONUMENT _____ RR SPIKE _____
 ON SURFACE - ~~BELOW~~ _____ ON _____
~~LEFT~~ C PAV'T - RIGHT _____ 5.6' _____
 17.9' TO LT EDGE PAVEMENT _____
 S.L.M. 716+19 _____



Grid: Northing: _____ - _____ Easting: _____ - _____

RECORD:
 P.I. SURV & CONST
 $\Delta=05^{\circ} 10' LT$
 SET P.K. NAIL ATOP RR SPIKE
 RR SPIKE NOT QUITE ON
 E-W SEC. LINE 4.7' RT
 C PAVEMENT
 RESET MAG/WASHER
 08/19/03, MDB



O.D.O.T. DISTRICT 2 SURVEY OFFICE

PERSONNEL

REFERENCE NO. 31

SHEET 5 OF 18

NOTES HOMAN
 H.C. BARNHISEL
 R.C. GLASS
RYALL

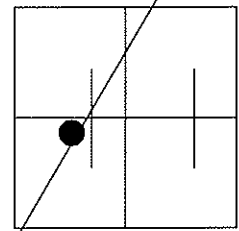
DATE 3-20-03
 WEATHER SUNNY
 TEMP. 50°

ROUTE S.R. 53
 COUNTY SANDUSKY
 TOWNSHIP RICE
 SECTION 11
T 5 N R 15 E

TYPE MONUMENT A=RR SPIKE B= PK/WASH

ON SURFACE - BELOW A=YES B=2"DOWN

~~LEFT~~ - Q PAV'T - RIGHT A=5.6' B=5.1'
A 17.9'
B 17.5' TO LT EDGE PAVEMENT
 S.L.M. A= 716+19

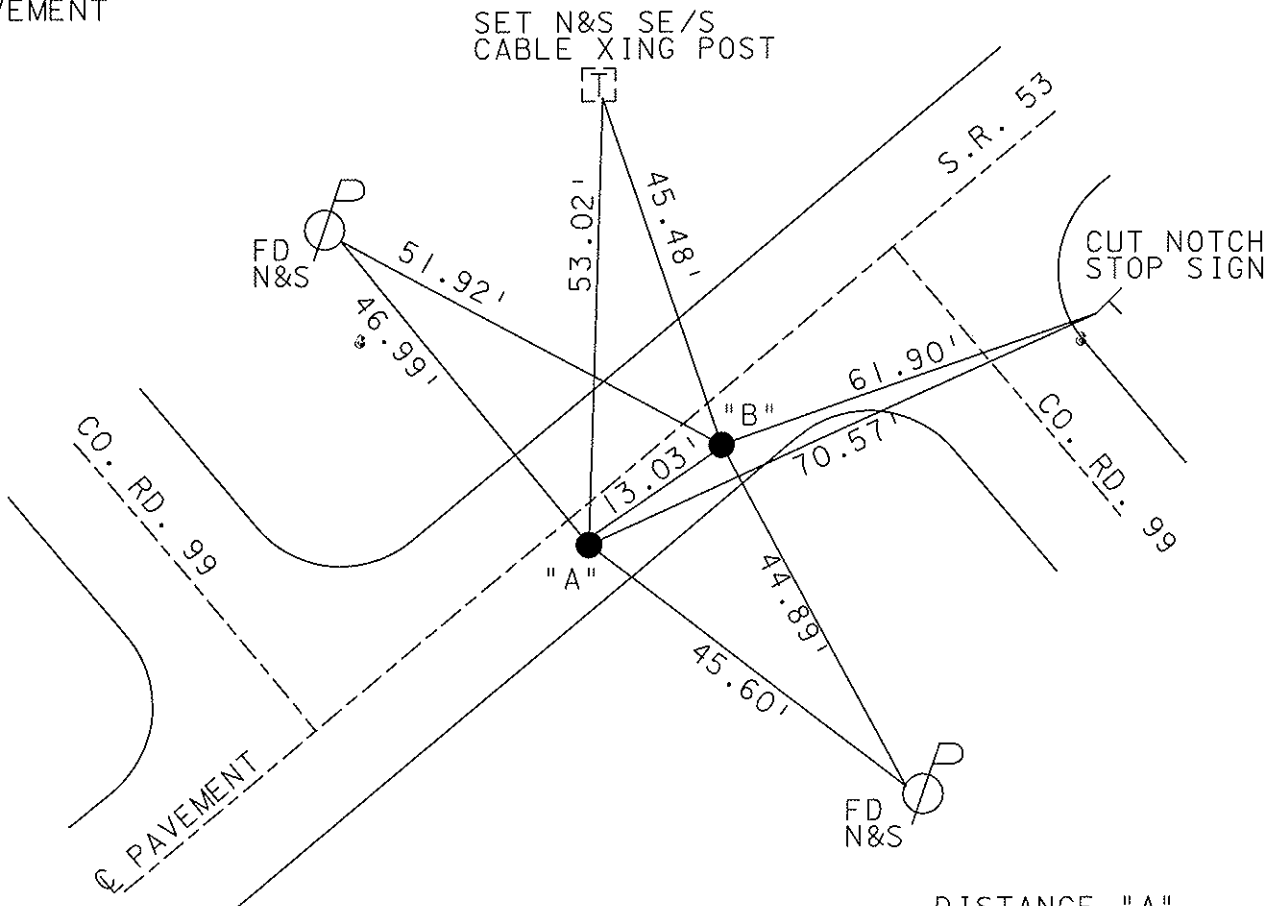


RECORD:

P.I. SURV & CONST
 DELTA=05° 10' LT

RESET MAG NAILS & WASHERS
 08-19-03
 MDB

SET PK ATOP RR SPIKE
 RR SPIKE NOT QUITE ON
 E-W 1/2 SEC. LINE 4.7' RT
 Q PAVEMENT



DISTANCE "A"
 TO "B" = 13.03'

"B" = 2' SOUTH OF
 Q PAVEMENT EAST

O.D.O.T. DISTRICT 2 SURVEY OFFICE

PERSONNEL _____

REFERENCE NO. _____

SHEET 2 OF 15

NOTES Ripple

H.C. Barbour

DATE 8/30/90

ROUTE SR# 53

R.C. Geyman

WEATHER SUNNY

COUNTY SANDUSKY

TEMP. 72°

TOWNSHIP Rice

SECTION 11

T 5 N R 15 E

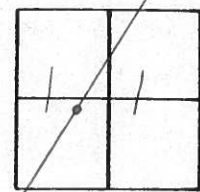
TYPE MONUMENT Set P.K. & Washer
ON SURFACE - BELOW P.K. & Washer A Top RR Spike

LEFT - CL PAV'T. - RIGHT 5' RT. & Pav't.

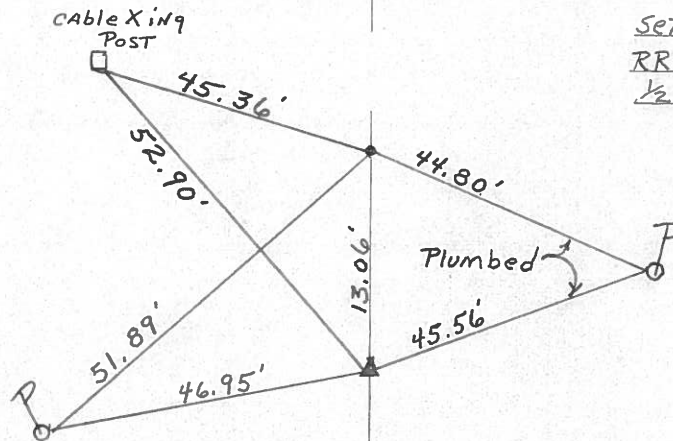
TO EDGE PAVEMENT

S.L.M. _____

31



P.I. SUR. & CONST.
 $\Delta = 05^{\circ} 10' \text{ LT.}$



Set P.K. A Top R.R. Spike
RR spike NOT quite ON E-W
1/2 Sec. Line 4.7 RT. & Pav't.

SR # 53

County Sandusky S.R. 53

Township Rice

Section 11

T5N, R15E

Personnel Cronin

Ripple

Geyman

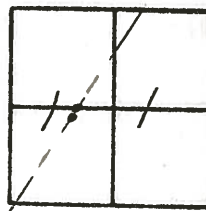
Barbour

Date 11/17/83 (Drawn 11/18/83)

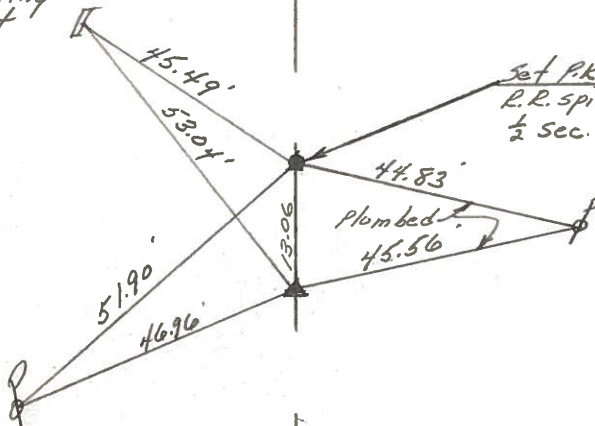
Weather overcast

Temp. 37°

(31)



cable xing post



P.I. Sur. & Const

$\Delta = 05^{\circ}10' Lt.$

Fd. R.R. spike - Set

P.K. & washer a top.

5' Rt. & Point.

S.R. # 53