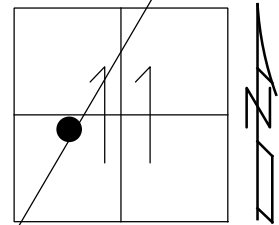


O.D.O.T. DISTRICT 2 SURVEY OFFICE (USE ONLY)

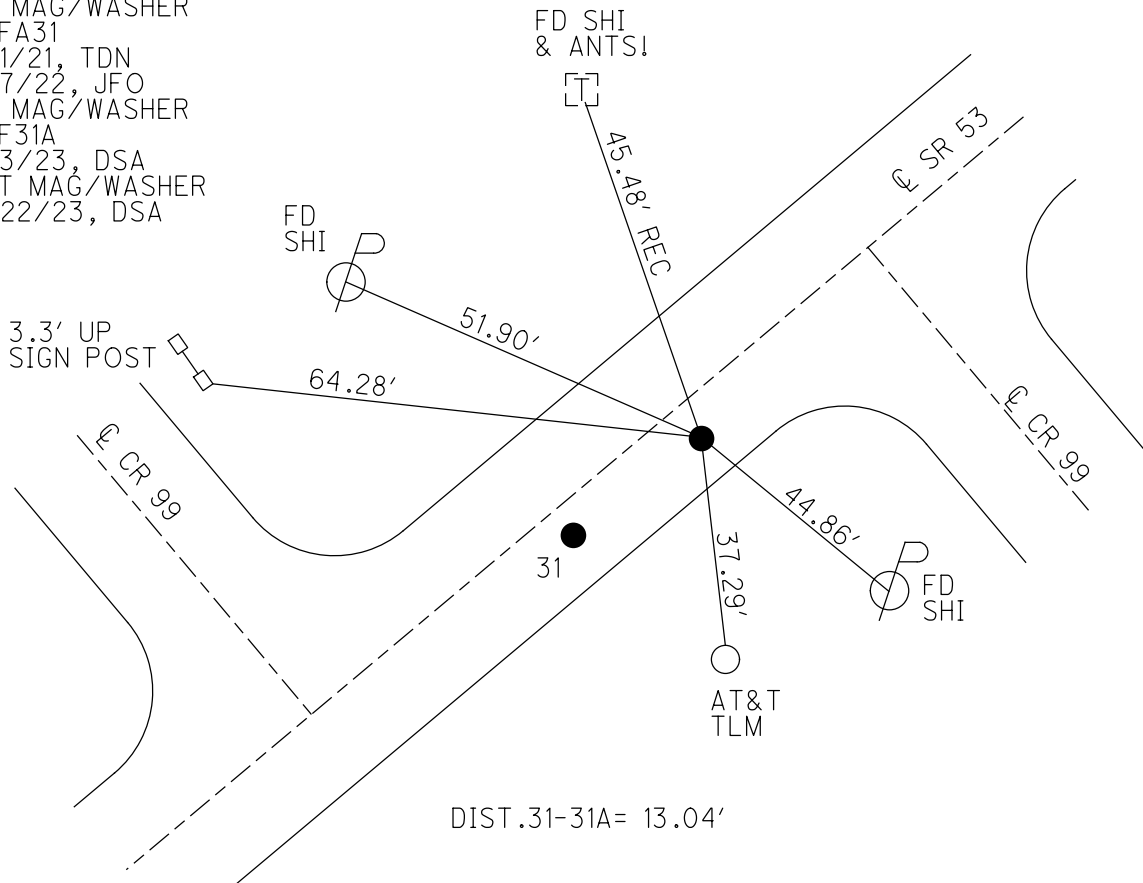
PERSONNEL	REFERENCE NO. <u>31 A</u>	SHEET <u>6</u> OF <u>19</u>
NOTES <u>RHOADES</u>	DATE <u>11/22/23</u>	ROUTE <u>SR 53</u>
H.C. <u>AUBLE</u>	WEATHER <u>OVERCAST</u>	COUNTY <u>SANDUSKY</u>
R.C. <u>MILLER</u>	TEMP. <u>39°</u>	TOWNSHIP <u>RICE</u>
<u>NIESE, ASTON</u>		SECTION <u>11</u>
DWG BY <u>RHOADES</u>	PID <u>95760</u>	T <u>5</u> N R <u>15</u> E

TYPE MONUMENT MAG/WASHER
 ON SURFACE - ~~BELOW~~ ON
 OFFSET C PAVEMENT 5.1' ~~LT~~ : RT
17.5' TO LT EDGE PAVEMENT
 STATION: 716+19



HORZ. DATUM: NAD83 2011 GEOID: NAVD88 2018
 GRID: NORTHING: 634605.955 EASTING: 1803887.027

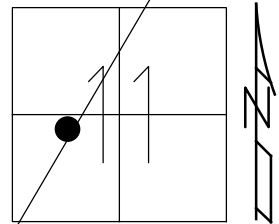
RECORD:
 FD P.K./WASHER
 2" DOWN
 3/20/03, MDB
 SET MAG/WASHER
 8/19/03, MDB
 FD MAG/WASHER
 REFA31
 6/1/21, TDN
 4/7/22, JFO
 FD MAG/WASHER
 REF31A
 8/3/23, DSA
 SET MAG/WASHER
 11/22/23, DSA



O.D.O.T. DISTRICT 2 SURVEY OFFICE (USE ONLY)

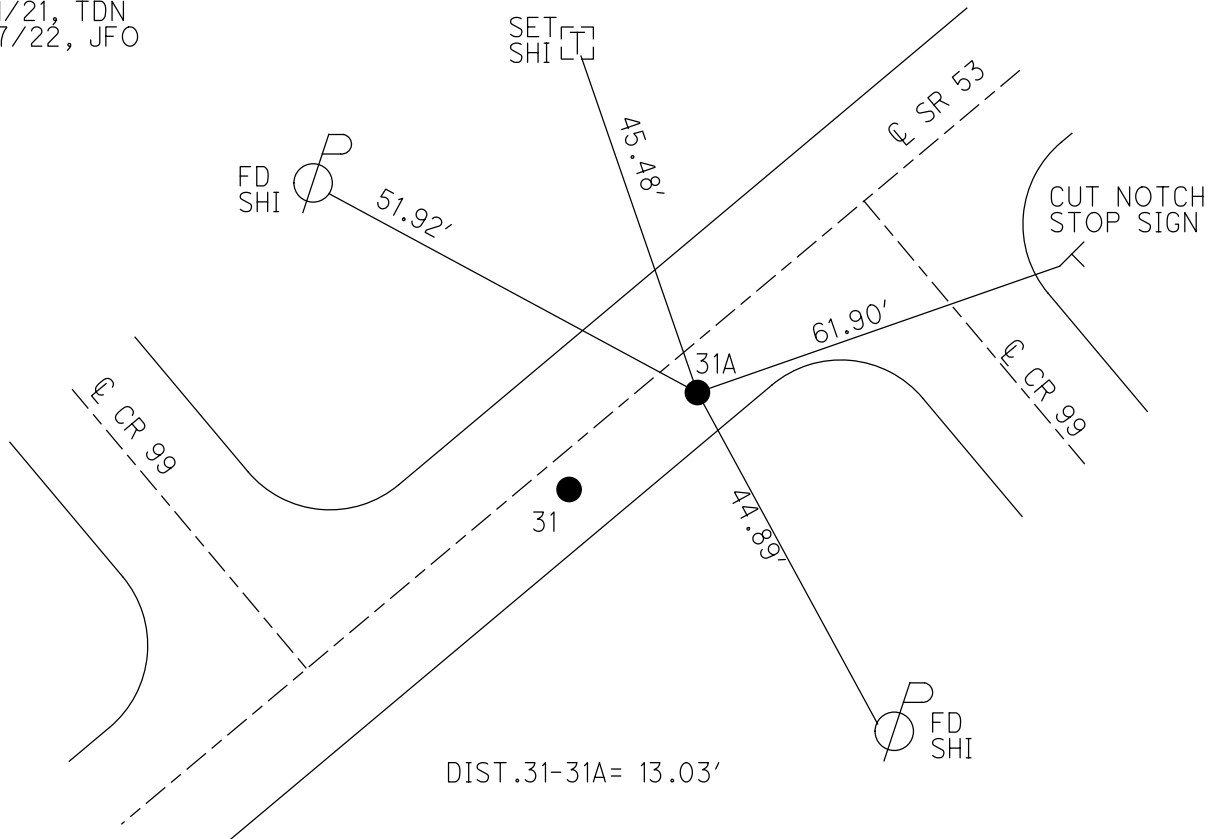
PERSONNEL _____ REFERENCE NO. 31 A SHEET 6 OF 19
 NOTES HOMAN DATE 3/20/03 ROUTE SR 53
 H.C. BARNHEISEL WEATHER SUNNY COUNTY SANDUSKY
 R.C. GLASS TEMP. 50° TOWNSHIP RICE
RYALL SECTION 11
 DWG BY RHOADES PID PVTRAIN T 5 N R 15 E

TYPE MONUMENT P.K./WASHER
~~ON SURFACE~~ - BELOW 2"
 OFFSET \odot PAVEMENT 5.1' ~~LT~~ : RT
17.5' TO LT EDGE PAVEMENT
 STATION: 716+19



HORZ. DATUM: NAD83 2011 GEOID: NAVD88 2018
 GRID: NORTHING: 634606.012 EASTING: 1803887.063

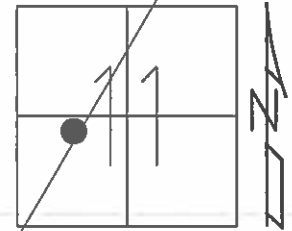
RECORD:
 FD P.K./WASHER
 2" DOWN
 3/20/03, MDB
 SET MAG/WASHER
 8/19/03, MDB
 FD MAG/WASHER
 REFA31
 6/1/21, TDN
 4/7/22, JFO



O.D.O.T. DISTRICT 2 SURVEY OFFICE (USE ONLY)

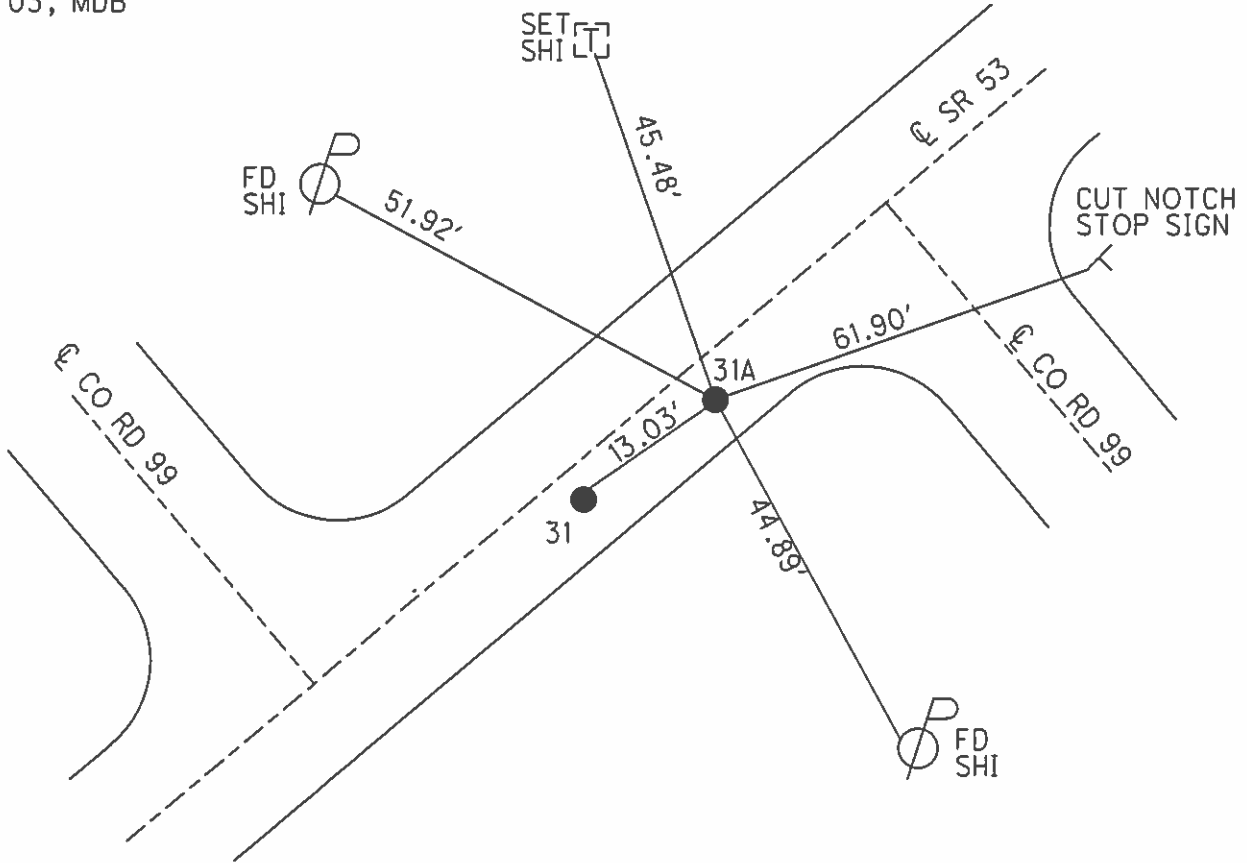
PERSONNEL	REFERENCE NO.	31-A	SHEET	6	OF	19
NOTES	HOMAN	DATE	3/20/03	ROUTE	SR 53	
H.C.	BARNHEISEL	WEATHER	SUNNY	COUNTY	SANDUSKY	
R.C.	GLASS	TEMP.	50°	TOWNSHIP	RICE	
	RYALL			SECTION	11	
				T	5	N
				R	15	E

TYPE MONUMENT P.K. NAIL/WASHER
~~ON SURFACE~~ - BELOW 2"
~~LEFT~~ \odot PAV'T - RIGHT 5.1'
17.5' TO LT EDGE PAVEMENT
 S.L.M. 716+19



Grid: Northing: - Easting: -

RECORD:
 P.I. SURV & CONST
 $\Delta=05^{\circ} 10'$ LT
 SET P.K. NAIL ATOP RR SPIKE
 RR SPIKE NOT QUITE ON
 E-W SEC. LINE 4.7' RT
 \odot PAVEMENT
 RESET MAG/WASHER
 08/19/03, MDB



O.D.O.T. DISTRICT 2 SURVEY OFFICE

PERSONNEL _____

REFERENCE NO. _____

SHEET 2 OF 15

NOTES Ripple

H.C. Barbour

DATE 8/30/90

ROUTE SR# 53

R.C. Geyman

WEATHER SUNNY

COUNTY SANDUSKY

TEMP. 72°

TOWNSHIP Rice

SECTION 11

T 5 N R 15 E

TYPE MONUMENT Set P.K. & washer

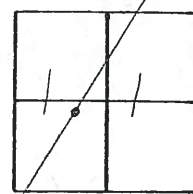
ON SURFACE - BELOW P.K. & washer A Top RR spike

LEFT - ℄ PAV'T. - RIGHT 5' RT. & PAV'T.

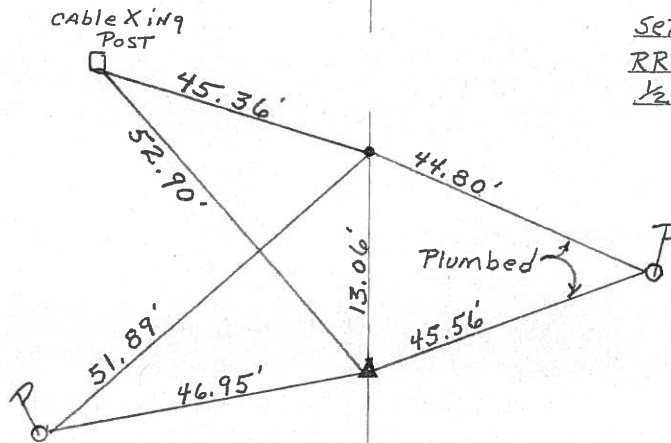
TO _____ EDGE PAVEMENT

S.L.M. _____

31A



P.I. SUR. & CONST.
Δ = 05° 10' LT.



Set P.K. A Top R.R. Spike
RR spike NOT quite ON E-W
1/2 Sec. Line 4.7' RT. & PAV'T.

SR # 53

County Sandusky S.R. 53

Date 11/17/83 (Drawn 11/18/83)

Township Rice

Weather overcast

Section 11

Temp. 37°

T5N, R15E

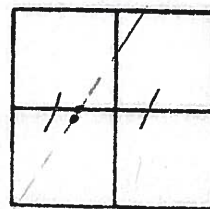
Personnel Cronin

Ripple

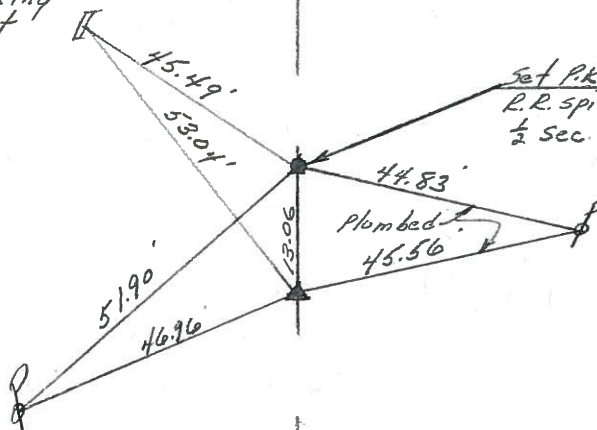
Geyman

Barbour

31A



Cable xing post



Set P.K. a top R.R. spike (Fd)
R.R. spike not quite on E-W
1/2 Sec. line - 4.7' Rt. & Paint



2 Sur. & Const

Δ = 05° 10' Lt.

Ed. R.R. spike - Set

P.K. & washer a top.

5' Rt. & Paint.

S.R. # 537