

O.D.O.T. DISTRICT 2 SURVEY OFFICE (USE ONLY)

PERSONNEL

REFERENCE NO. 33

SHEET 8 OF 19

NOTES RHOADES  
 H.C. AUBLE  
 R.C. MILLER  
NIESE, ASTON

DATE 11/22/23  
 WEATHER OVERCAST  
 TEMP. 39°

ROUTE SR 53  
 COUNTY SANDUSKY  
 TOWNSHIP RICE  
 SECTION 11

DWG BY RHOADES PID 95760

T 5 N R 15 E

TYPE MONUMENT MAG/WASHER

ON SURFACE - ~~BELOW~~ ON

OFFSET Q PAVEMENT 2.7' LT : RT

8.7' TO LT EDGE PAVEMENT

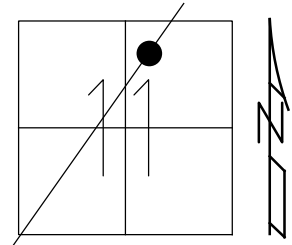
STATION: 738+00

HORZ. DATUM: NAD83 2011

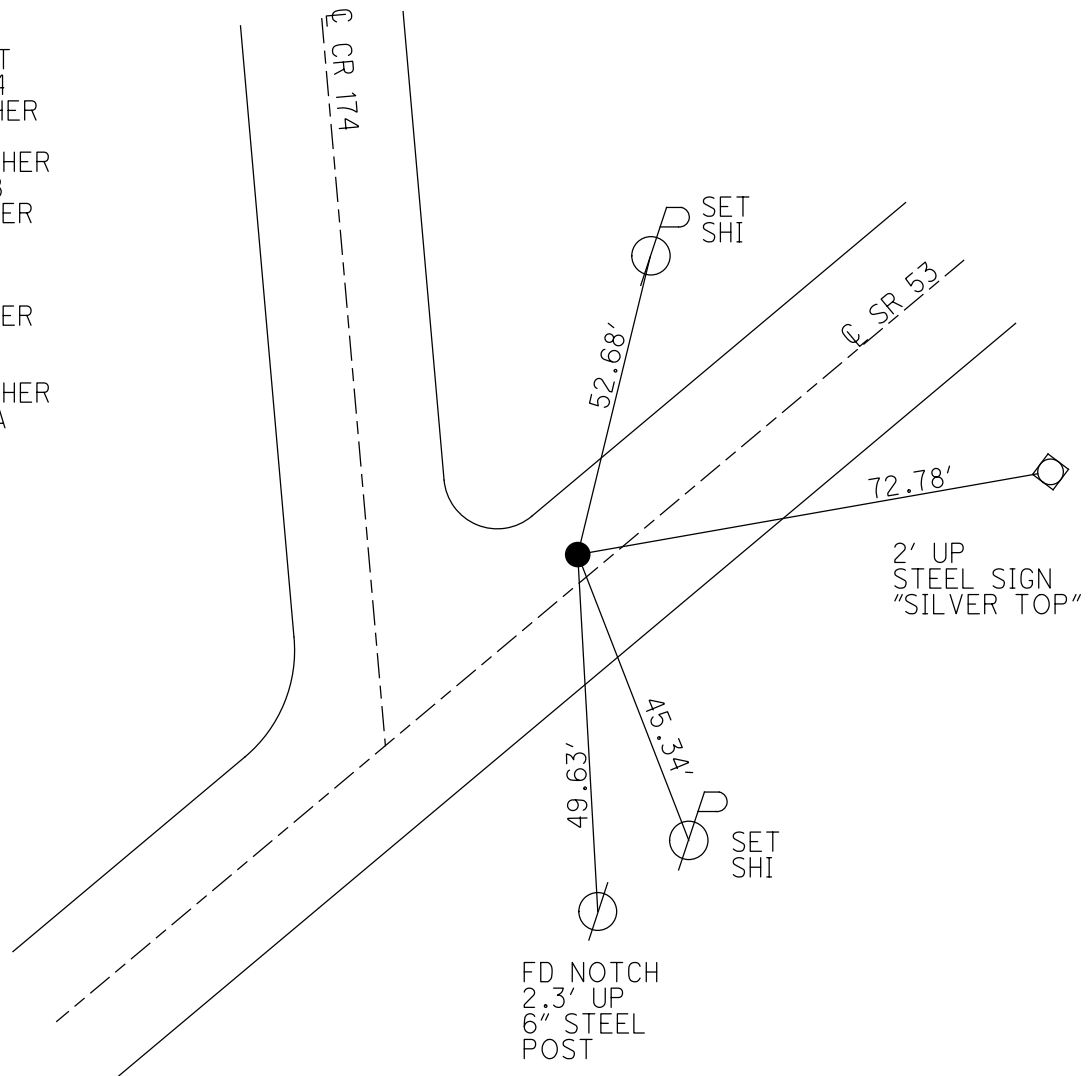
GEOID: NAVD88 2018

GRID: NORTHING: 636557.199

EASTING: 1804797.453



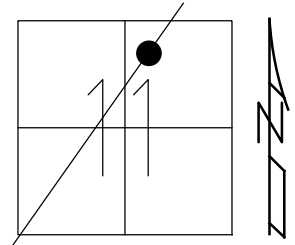
RECORD: P.I.  
 $\Delta = 06^\circ 23' RT$   
 STA. 612+36.14  
 FD P.K./WASHER  
 3/20/03  
 SET MAG/WASHER  
 8/19/03, MDB  
 FD MAG/WASHER  
 REF33  
 5/27/21, TDN  
 4/7/22, JFO  
 FD MAG/WASHER  
 REF33  
 8/3/23, DSA  
 SET MAG/WASHER  
 11/22/23, DSA



O.D.O.T. DISTRICT 2 SURVEY OFFICE (USE ONLY)

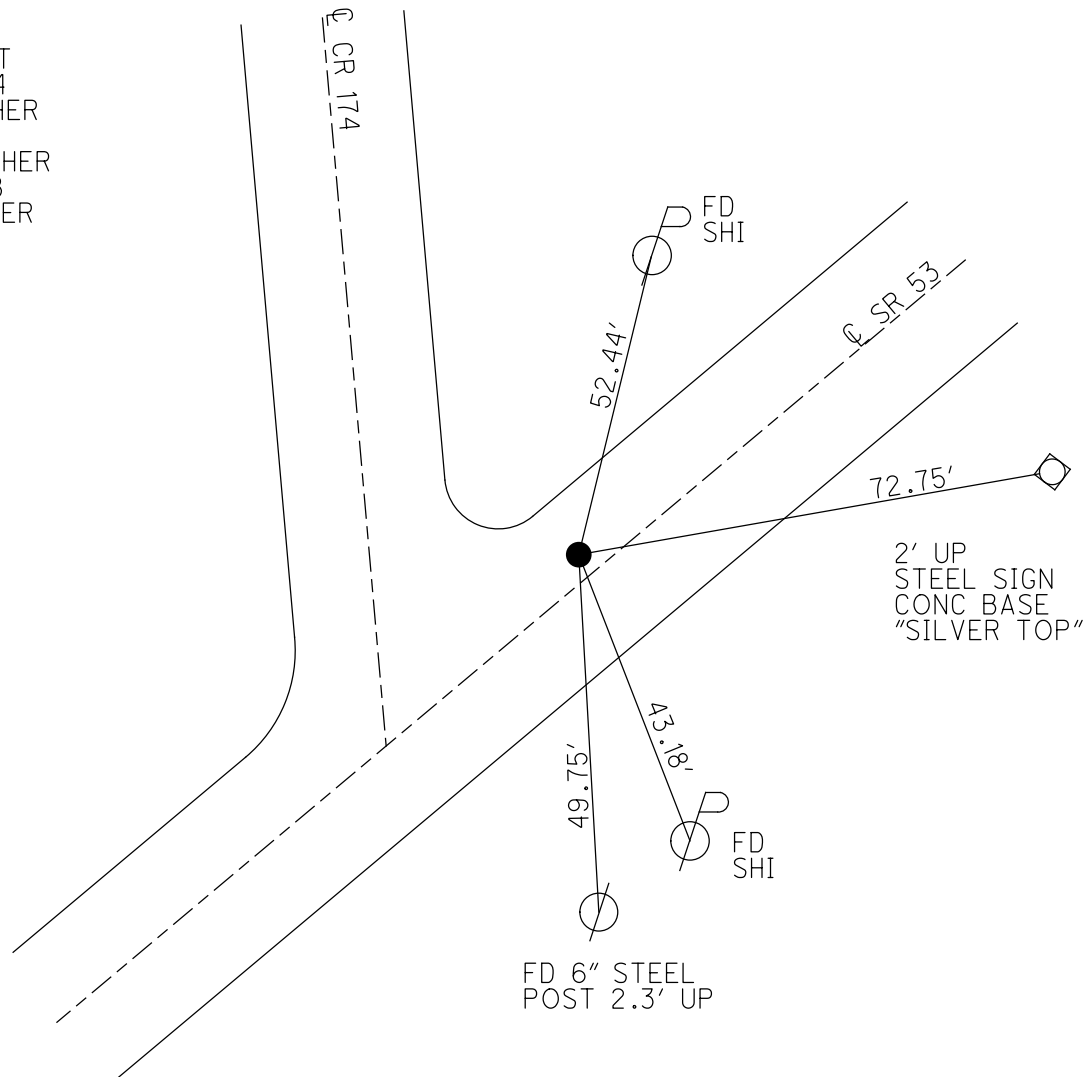
PERSONNEL	REFERENCE NO. <u>33</u>	SHEET <u>8</u> OF <u>19</u>
NOTES <u>HOMAN</u>	DATE <u>3/20/03</u>	ROUTE <u>SR 53</u>
H.C. <u>BARNHEISEL</u>	WEATHER <u>SUNNY</u>	COUNTY <u>SANDUSKY</u>
R.C. <u>GLASS</u>	TEMP. <u>50°</u>	TOWNSHIP <u>RICE</u>
<u>RYALL</u>		SECTION <u>11</u>
DWG BY <u>RHOADES</u>	PID <u>PVTRAIN</u>	T <u>5</u> N R <u>15</u> E

TYPE MONUMENT P.K./WASHER  
 ON SURFACE - ~~BELOW~~ ON  
 OFFSET  $\odot$  PAVEMENT 2.7' LT : RT  
8.7' TO LT EDGE PAVEMENT  
 STATION: 738+00



HORIZ.DATUM: NAD83 2011 GEOID: NAVD88 2018  
 GRID: NORTHING: 636557.158 EASTING: 1804797.412

RECORD: P.I.  
 $\Delta = 06^\circ 23' RT$   
 STA. 612+36.14  
 FD P.K./WASHER  
 3/20/03  
 SET MAG/WASHER  
 8/19/03, MDB  
 FD MAG/WASHER  
 REF33  
 5/27/21, TDN  
 4/7/22, JFO

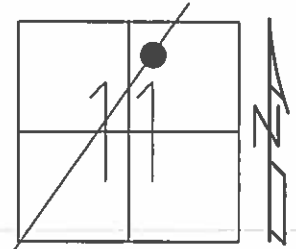


O.D.O.T. DISTRICT 2 SURVEY OFFICE (USE ONLY)

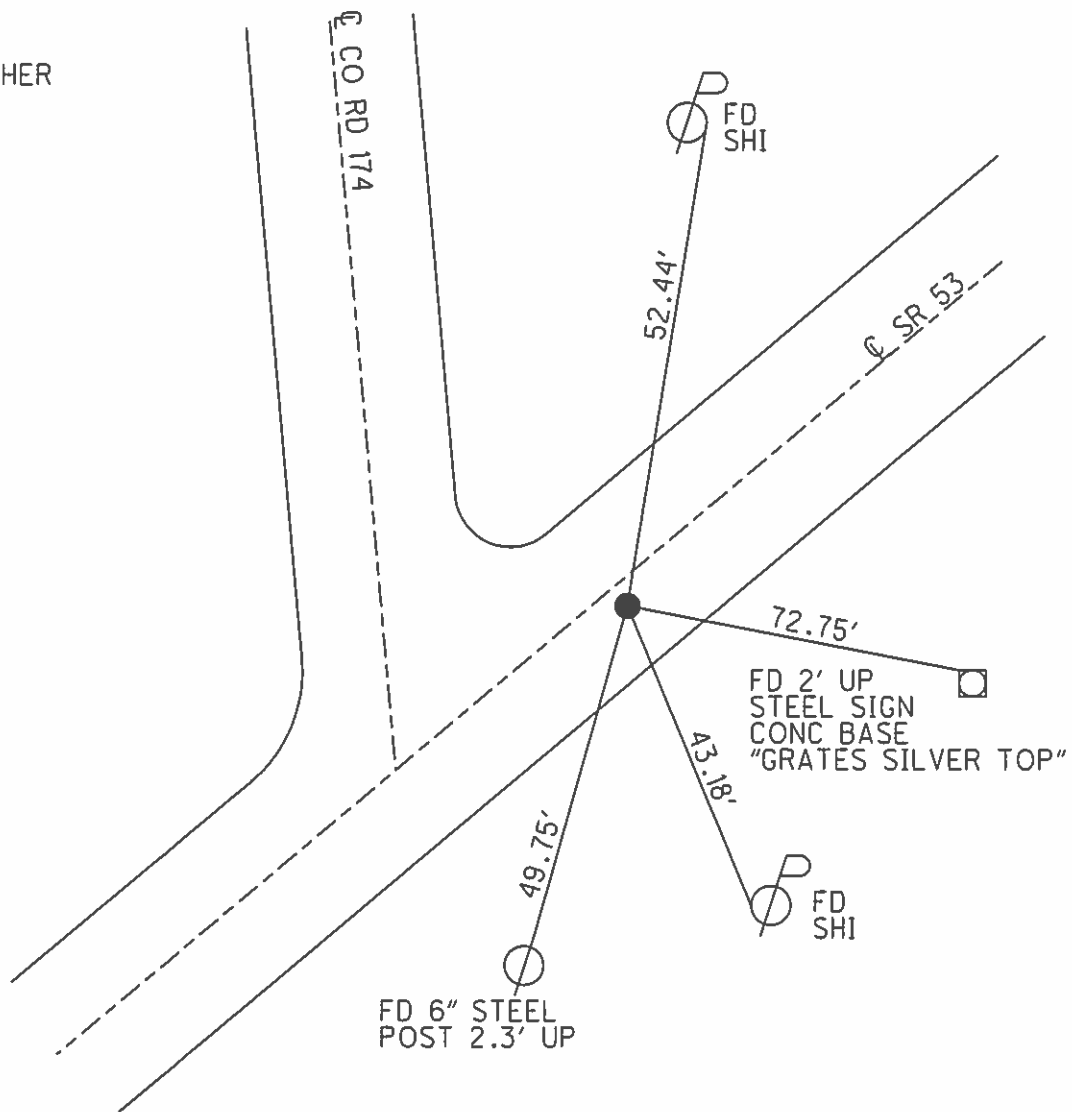
PERSONNEL	REFERENCE NO.	<u>33</u>	SHEET	<u>8</u> OF <u>19</u>	
NOTES	HOMAN	DATE	<u>3/20/03</u>	ROUTE	<u>SR 53</u>
H.C.	<u>BARNHISEL</u>	WEATHER	<u>SUNNY</u>	COUNTY	<u>SANDUSKY</u>
R.C.	<u>GLASS</u>	TEMP.	<u>50°</u>	TOWNSHIP	<u>RICE</u>
	<u>RYALL</u>			SECTION	<u>11</u>
				<u>T 5 N R 15 E</u>	

TYPE MONUMENT P.K. NAIL/WASHER  
 ON SURFACE - ~~BELOW~~ ON \_\_\_\_\_  
 LEFT - ☉ PAV'T - ~~RIGHT~~ 2.7'  
8.7' TO LT EDGE PAVEMENT  
 S.L.M. 738+00

Grid: Northing: \_\_\_\_\_ Easting: \_\_\_\_\_



RECORD:  
 P.I. ☉ SURVEY  
 $\Delta = 06^\circ 23' RT$   
 612+36.14  
 RESET MAG/WASHER  
 08/19/03, MDB



O.D.O.T. DISTRICT 2 SURVEY OFFICE

PERSONNEL

REFERENCE NO. 33

SHEET 7 OF 18

NOTES HOMAN

DATE 3-20-03

ROUTE S.R. 53

H.C. BARNHEISEL

WEATHER SUNNY

COUNTY SANDUSKY

R.C. GLASS

TEMP. 50°

TOWNSHIP RICE

RYALL

SECTION 11

T 5 N R 15 E

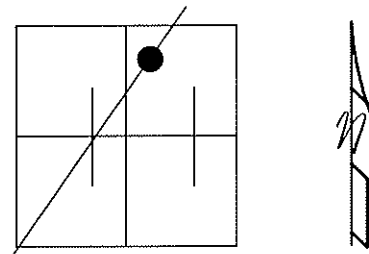
TYPE MONUMENT PK NAIL & WASHER

ON SURFACE - ~~BELOW~~ YES

LEFT - Q PAV'T - ~~RIGHT~~ 2.7'

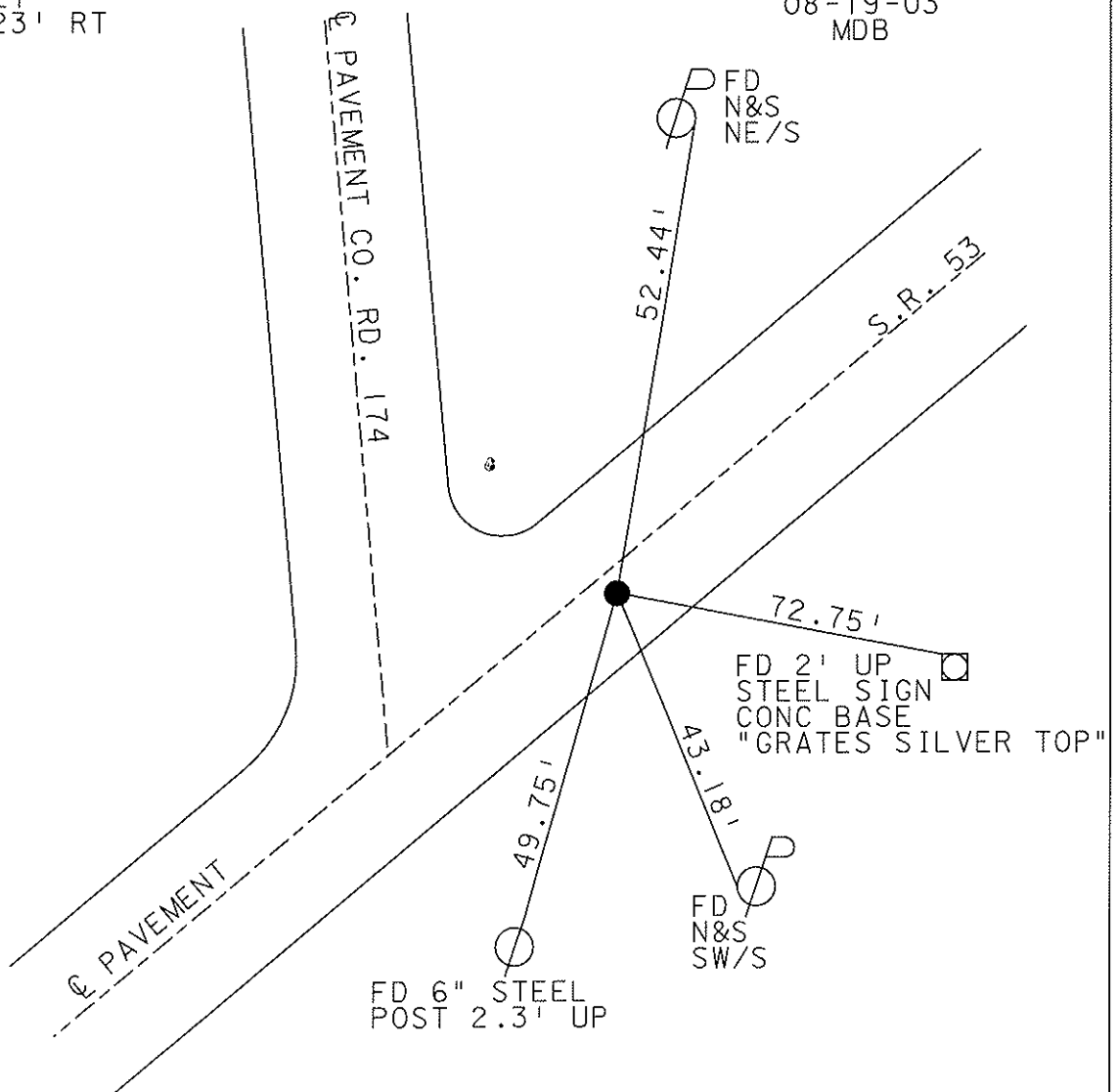
8.7' TO LT EDGE PAVEMENT

S.L.M. 738+00



RECORD:  
P.I. Q SURVEY  
DELTA = 06° 23' RT  
612+36.14

RESET MAG NAIL & WASHER  
08-19-03  
MDB



# O.D.O.T. DISTRICT 2 SURVEY OFFICE

PERSONNEL \_\_\_\_\_

REFERENCE NO. \_\_\_\_\_

SHEET 4 OF 15

NOTES Ripple

H.C. Barbour

DATE 8/30/90

ROUTE SR#53

R.C. Geyman

WEATHER SUNNY

COUNTY SANDUSKY

TEMP. 72°

TOWNSHIP Rice

SECTION 11

T 5 N R 15 E

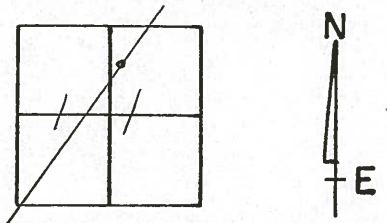
TYPE MONUMENT Set P.K. & Washer  
 ON SURFACE - BELOW PK & Washer A Top P.K. & Washer

LEFT - CL PAV'T. - RIGHT R'LT. & Pav'T.

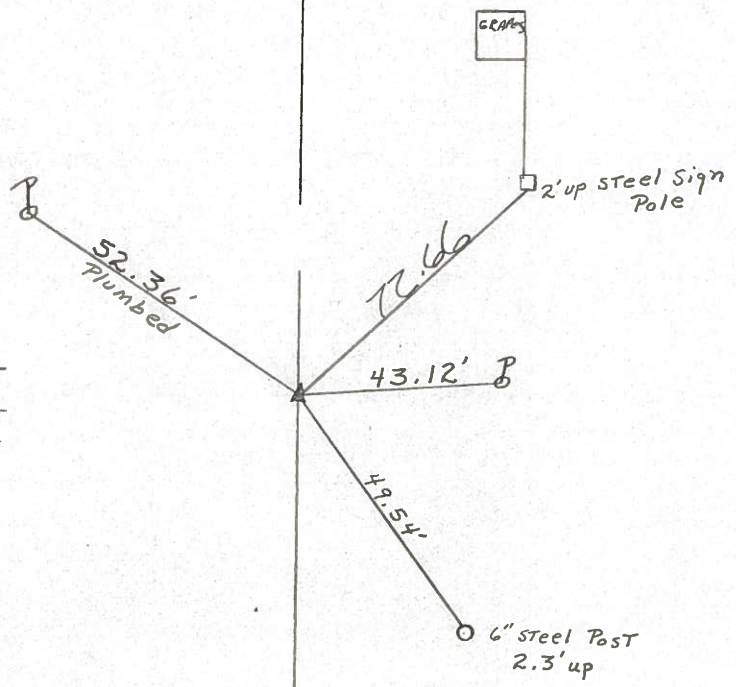
TO EDGE PAVEMENT

S.L.M. \_\_\_\_\_

33



P.I. & Survey  
 $\Delta = 06^{\circ} 23' RT.$   
612 + 36.14



SR# 53

County Sandusky S.R. #53

Township Rice

Section 11

T5N, R15E

Personnel Cronin

Ripple

Geyman

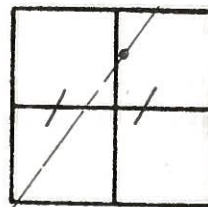
Barbour

Date 11/17/83 (Drawn 11/18/83)

Weather overcast

Temp. 37°

33



P.I. & Sur.

A = 06°23' Rt.

612 + 36.14

Set P.K. & washer a top

P.K. & washer 2' Lt. & Permit.

52.36  
Plumbed

68.91

43.11'

'4' chisled in steel pole for  
Silver top sign

S.R. #53