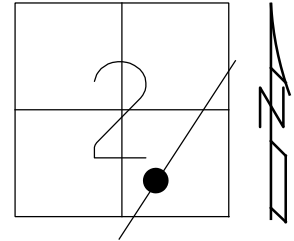


O.D.O.T. DISTRICT 2 SURVEY OFFICE (USE ONLY)

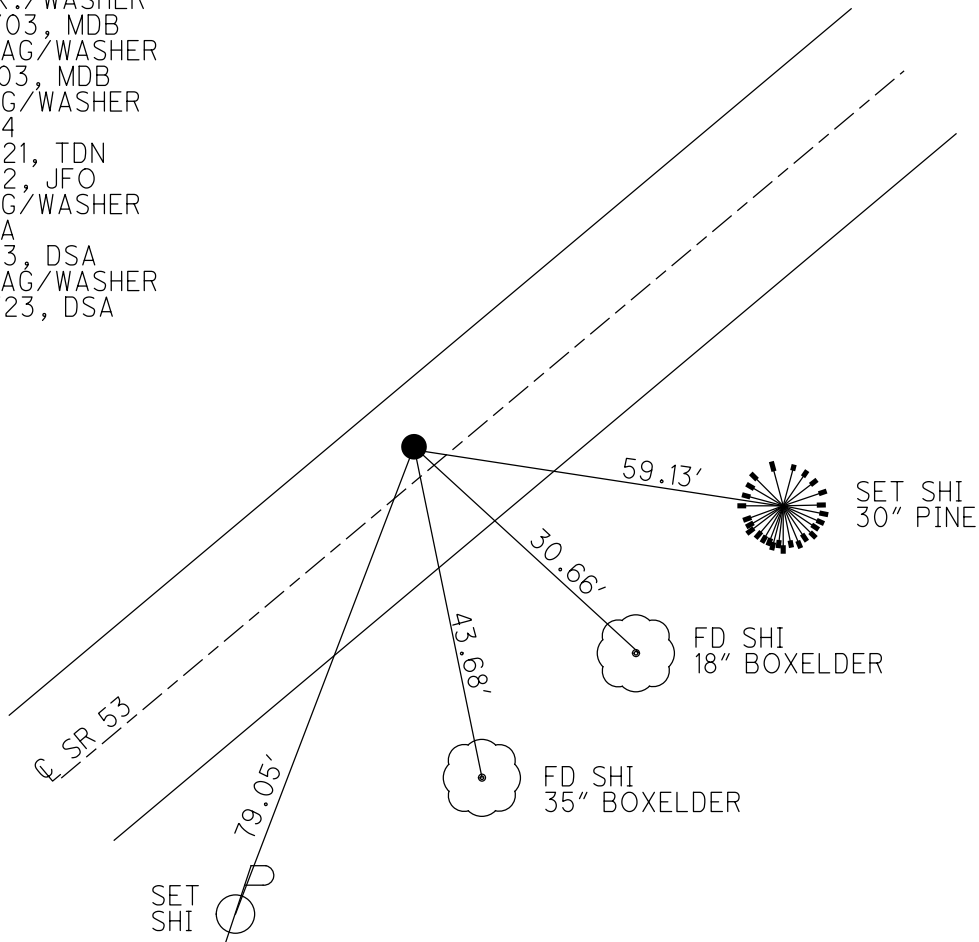
PERSONNEL	REFERENCE NO. <u>34 A</u>	SHEET <u>10</u> OF <u>19</u>
NOTES <u>RHOADES</u>	DATE <u>11/22/23</u>	ROUTE <u>SR 53</u>
H.C. <u>AUBLE</u>	WEATHER <u>CLOUDY</u>	COUNTY <u>SANDUSKY</u>
R.C. <u>MILLER</u>	TEMP. <u>43°</u>	TOWNSHIP <u>RICE</u>
<u>NIESE, ASTON</u>		SECTION <u>2</u>
DWG BY <u>RHOADES</u>	PID <u>95760</u>	T <u>5</u> N R <u>15</u> E

TYPE MONUMENT MAG/WASHER  
 ON SURFACE - ~~BELOW~~ ON  
 OFFSET Q PAVEMENT 1' LT : ~~RT~~  
10.7' TO LT EDGE PAVEMENT  
 STATION: 755+37

HORZ. DATUM: NAD83 2011 GEOID: NAVD88 2018  
 GRID: NORTHING: 637891.546 EASTING: 1805906.529



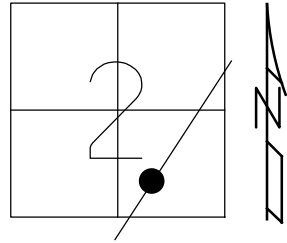
RECORD: P.I.  
 $\Delta = 01^\circ 17' RT$   
 STA. 629+71.94  
 FD P.K./WASHER  
 3/20/03, MDB  
 SET MAG/WASHER  
 8/19/03, MDB  
 FD MAG/WASHER  
 REFA34  
 5/27/21, TDN  
 4/7/22, JFO  
 FD MAG/WASHER  
 REF34A  
 8/8/23, DSA  
 SET MAG/WASHER  
 11/22/23, DSA



O.D.O.T. DISTRICT 2 SURVEY OFFICE (USE ONLY)

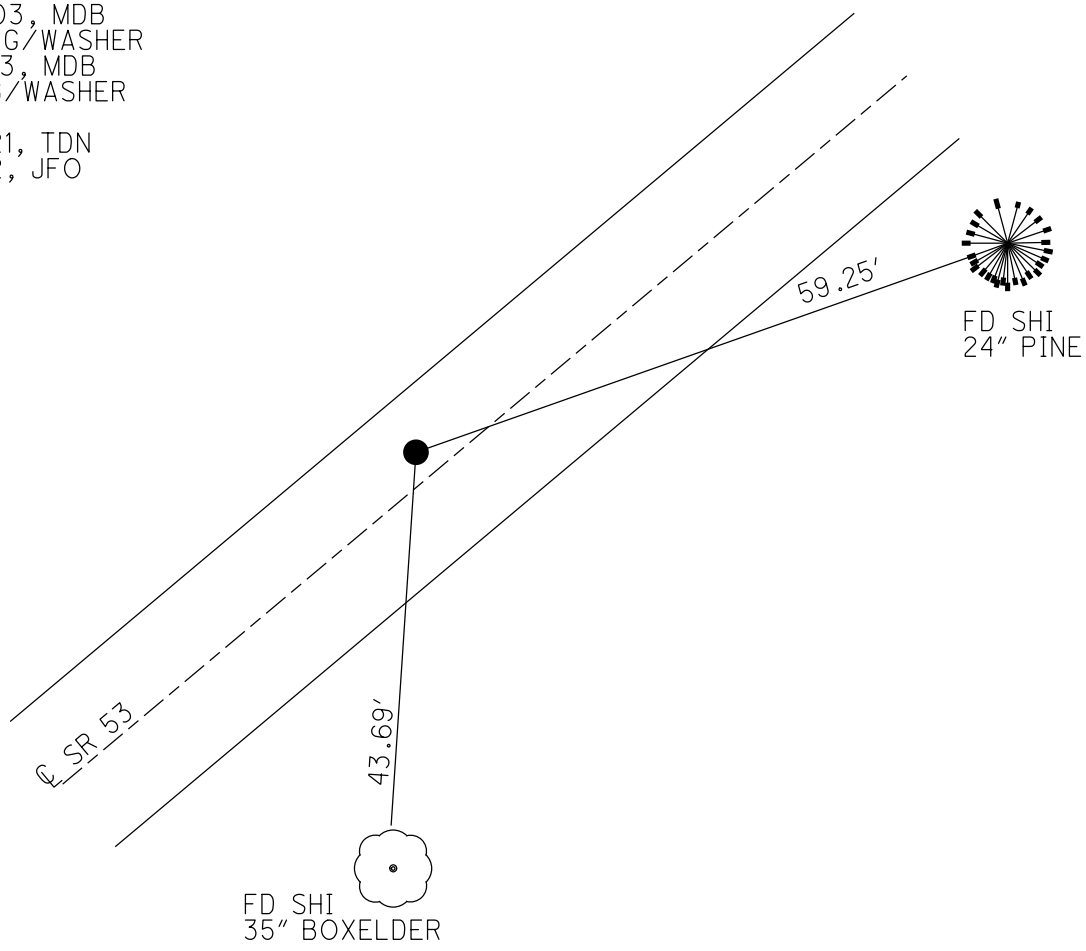
PERSONNEL	REFERENCE NO. <u>34 A</u>	SHEET <u>10</u> OF <u>19</u>
NOTES <u>HOMAN</u>	DATE <u>3/20/03</u>	ROUTE <u>SR 53</u>
H.C. <u>BARNHISEL</u>	WEATHER <u>SUNNY</u>	COUNTY <u>SANDUSKY</u>
R.C. <u>GLASS</u>	TEMP. <u>50°</u>	TOWNSHIP <u>RICE</u>
<u>RYALL</u>		SECTION <u>2</u>
DWG BY <u>RHOADES</u>	PID <u>PVTRAIN</u>	T <u>5</u> N R <u>15</u> E

TYPE MONUMENT P.K./WASHER  
 ON SURFACE - ~~BELOW~~ ON  
 OFFSET Q PAVEMENT 1' LT : ~~RT~~  
10.7' TO LT EDGE PAVEMENT  
 STATION: 755+37



HORIZ.DATUM: NAD83 2011 GEOID: NAVD88 2018  
 GRID: NORTHING: 637891.560 EASTING: 1805906.547

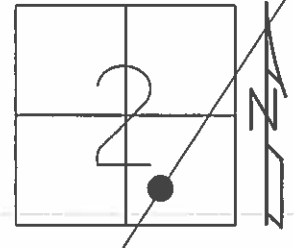
RECORD: P.I.  
 $\Delta = 01^\circ 17' RT$   
 STA. 629+71.94  
 FD P.K./WASHER  
 3/20/03, MDB  
 SET MAG/WASHER  
 8/19/03, MDB  
 FD MAG/WASHER  
 REFA34  
 5/27/21, TDN  
 4/7/22, JFO



O.D.O.T. DISTRICT 2 SURVEY OFFICE (USE ONLY)

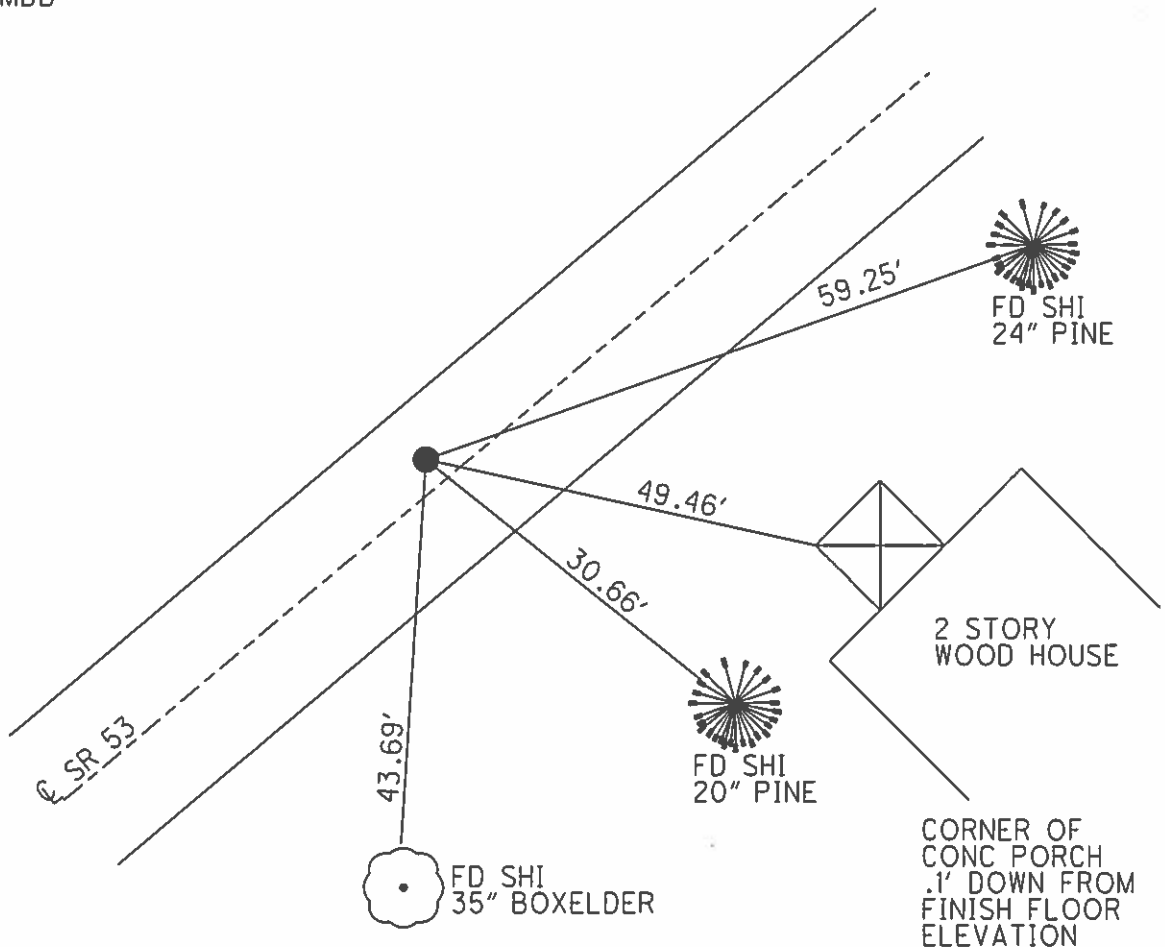
PERSONNEL	REFERENCE NO.	34-A	SHEET	10	OF	19
NOTES	HOMAN	DATE	3/20/03	ROUTE	SR 53	
H.C.	BARNHISEL	WEATHER	SUNNY	COUNTY	SANDUSKY	
R.C.	GLASS	TEMP.	50°	TOWNSHIP	RICE	
	RYALL			SECTION	2	
				T	5	N
				R	16	E

TYPE MONUMENT P.K. NAIL/WASHER  
 ON SURFACE - ~~BELOW~~ ON \_\_\_\_\_  
 LEFT - ☉ PAV'T - ~~RIGHT~~ 1' \_\_\_\_\_  
10.7' TO LT EDGE PAVEMENT  
 S.L.M. 755+37



Grid: Northing: \_\_\_\_\_ Easting: \_\_\_\_\_

RECORD:  
 P.I. SURV & CONST  
 Δ= 01° 17' RT  
 629+71.94  
 RESET MAG/WASHER  
 8/19/03, MDB



O.D.O.T. DISTRICT 2 SURVEY OFFICE

PERSONNEL

REFERENCE NO. 34-A

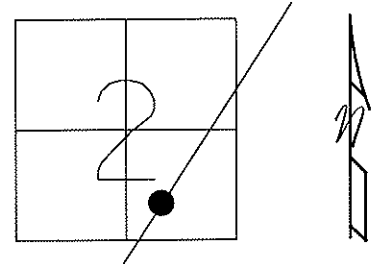
SHEET 9 OF 18

NOTES HOMAN  
 H.C. BARNHISEL  
 R.C. GLASS  
RYALL

DATE 3-20-03  
 WEATHER SUNNY  
 TEMP. 50°

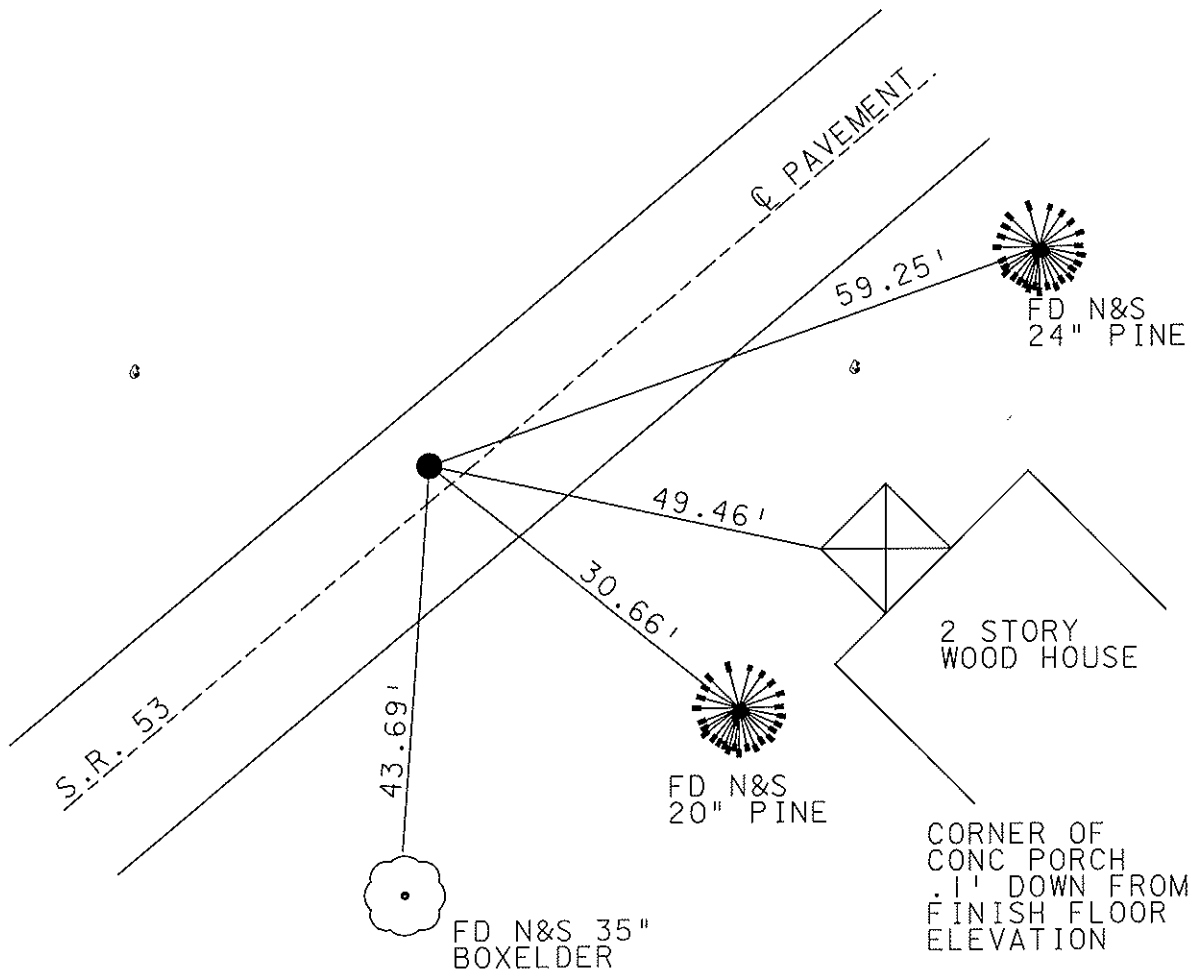
ROUTE S.R. 53  
 COUNTY SANDUSKY  
 TOWNSHIP RICE  
 SECTION 2  
T 5 N R 16 E

TYPE MONUMENT PK NAIL & WASHER  
 ON SURFACE - ~~BELOW~~ YES  
 LEFT - Q PAV'T - ~~RIGHT~~ 1'  
10.7' TO LT EDGE PAVEMENT  
 S.L.M. 755+37



RECORD:  
 P.I. SURV & CONST  
 DELTA =  $01^{\circ} 17' RT$   
 629+71.94

RESET MAG NAIL & WASHER  
 08-19-03  
 MDB



# O.D.O.T. DISTRICT 2 SURVEY OFFICE

PERSONNEL \_\_\_\_\_

REFERENCE NO. \_\_\_\_\_

SHEET 6 OF 15

NOTES Ripple

H.C. BARBOUR

R.C. Geyman

DATE 8/30/90

WEATHER SUNNY

TEMP. 72°

ROUTE SR. #53

COUNTY SANDUSKY

TOWNSHIP Rice

SECTION 2

T 5 N R 16 E

TYPE MONUMENT Dig when Needed

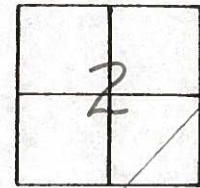
ON SURFACE - BELOW PK. & WASHER A Top mine spike

LEFT - ¢ PAV'T. - RIGHT 1' LT. & PAV'T

\_\_\_\_\_ TO \_\_\_\_\_ EDGE PAVEMENT

S.L.M. \_\_\_\_\_

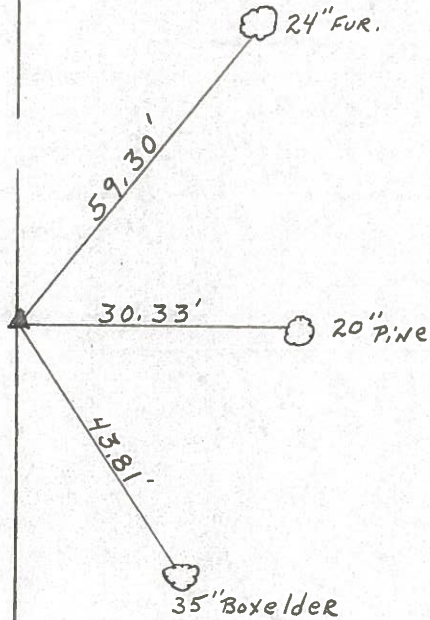
34A



P.I. SURVEY & CONST.

Δ = 01° 17' RT.

629 + 71.94 =



County Sandusky S.R. # 53

Township Rice

Section 2

T5N, R16E

Personnel Cronin

Ripple

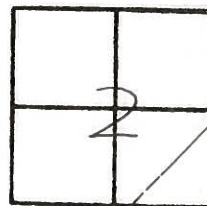
Barbour

Date 11/18/83

Weather overcast

Temp. 47

34A



P.I. Sur. & Const.

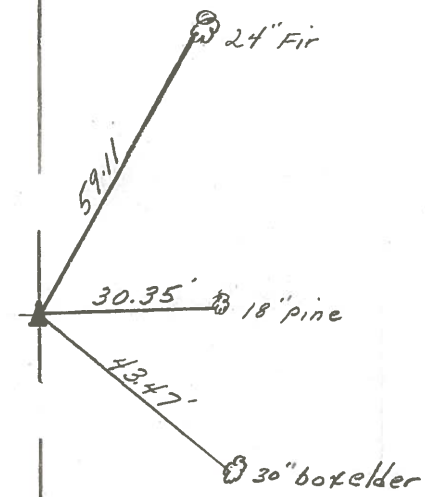
Δ = 01° 17' Rt

Set P.K. & washer

a top mine spike (Fd.)

1' Lt. & Paunit.

629 + 71.94



S.R. # 53