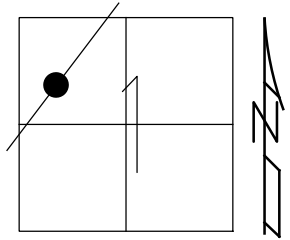


O.D.O.T. DISTRICT 2 SURVEY OFFICE (USE ONLY)

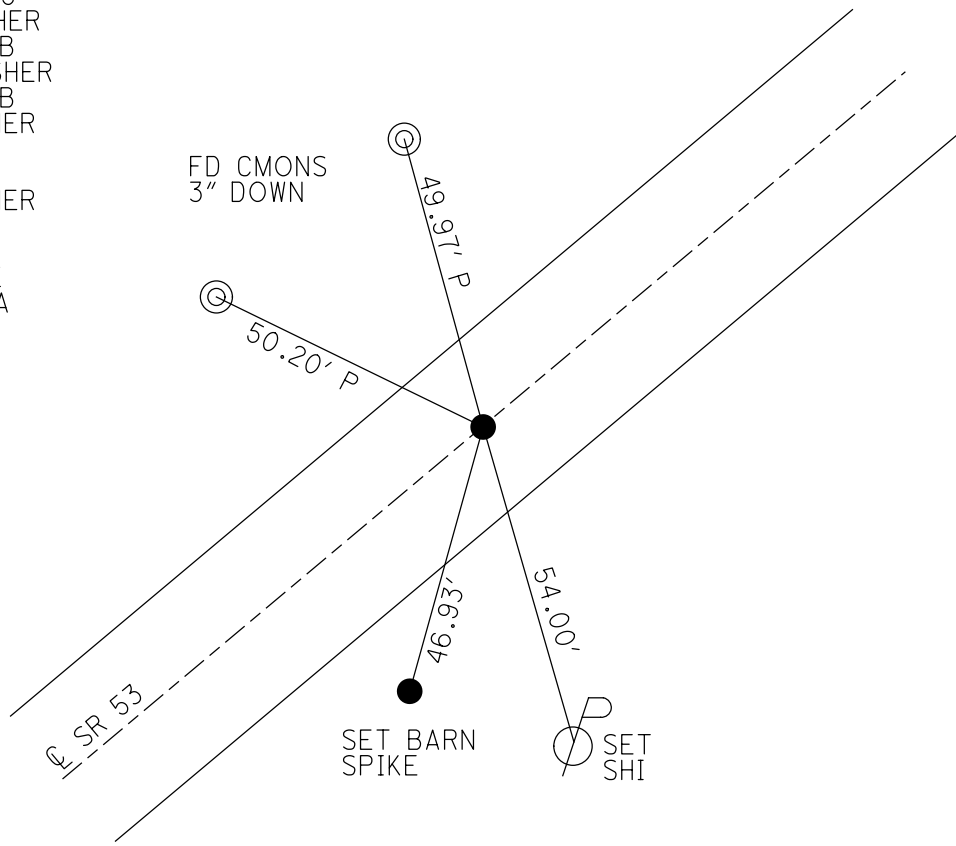
PERSONNEL	REFERENCE NO. <u>35</u>	SHEET <u>11</u> OF <u>19</u>
NOTES <u>RHOADES</u>	DATE <u>11/22/23</u>	ROUTE <u>SR 53</u>
H.C. <u>AUBLE</u>	WEATHER <u>CLOUDY</u>	COUNTY <u>SANDUSKY</u>
R.C. <u>MILLER</u>	TEMP. <u>43°</u>	TOWNSHIP <u>RICE</u>
<u>NIESE, ASTON</u>		SECTION <u>1</u>
DWG BY <u>RHOADES</u>	PID <u>95760</u>	T <u>5</u> N R <u>15</u> E

TYPE MONUMENT SM.SPIKE  
 ON SURFACE - ~~BELOW~~ ON  
 OFFSET  $\varnothing$  PAVEMENT ON LT : RT  
11.6' TO RT EDGE PAVEMENT  
 STATION: 786+95



HORZ.DATUM: NAD83 2011      GEOID: NAVD88 2018  
 GRID: NORTHING: 640284.623      EASTING: 1807967.053

RECORD: P.I.  
 $\Delta = 00^\circ 10' RT$   
 STA.661+29.75  
 FD P.K./WASHER  
 3/20/03, MDB  
 SET MAG/WASHER  
 6/02/03, MDB  
 FD MAG/WASHER  
 REF35  
 5/27/21, TDN  
 FD MAG/WASHER  
 REF35  
 8/8/23, DSA  
 SET SM.SPIKE  
 11/22/23, DSA



O.D.O.T. DISTRICT 2 SURVEY OFFICE (USE ONLY)

PERSONNEL

REFERENCE NO. 35

SHEET 11 OF 19

NOTES HOMAN  
 H.C. BARNHISEL  
 R.C. GLASS  
RYALL

DATE 3/20/03  
 WEATHER SUNNY  
 TEMP. 50°

ROUTE SR 53  
 COUNTY SANDUSKY  
 TOWNSHIP RICE  
 SECTION 1  
T 5 N R 15 E

DWG BY RHOADES PID PVTRAIN

TYPE MONUMENT P.K./WASHER

ON SURFACE - ~~BELOW~~ ON

OFFSET Q PAVEMENT ON LT : RT  
11.6' TO RT EDGE PAVEMENT

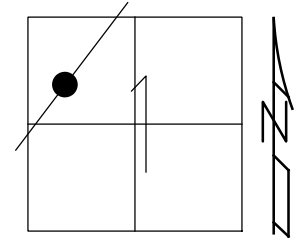
STATION: 786+95

HORIZ.DATUM: NAD83 2011

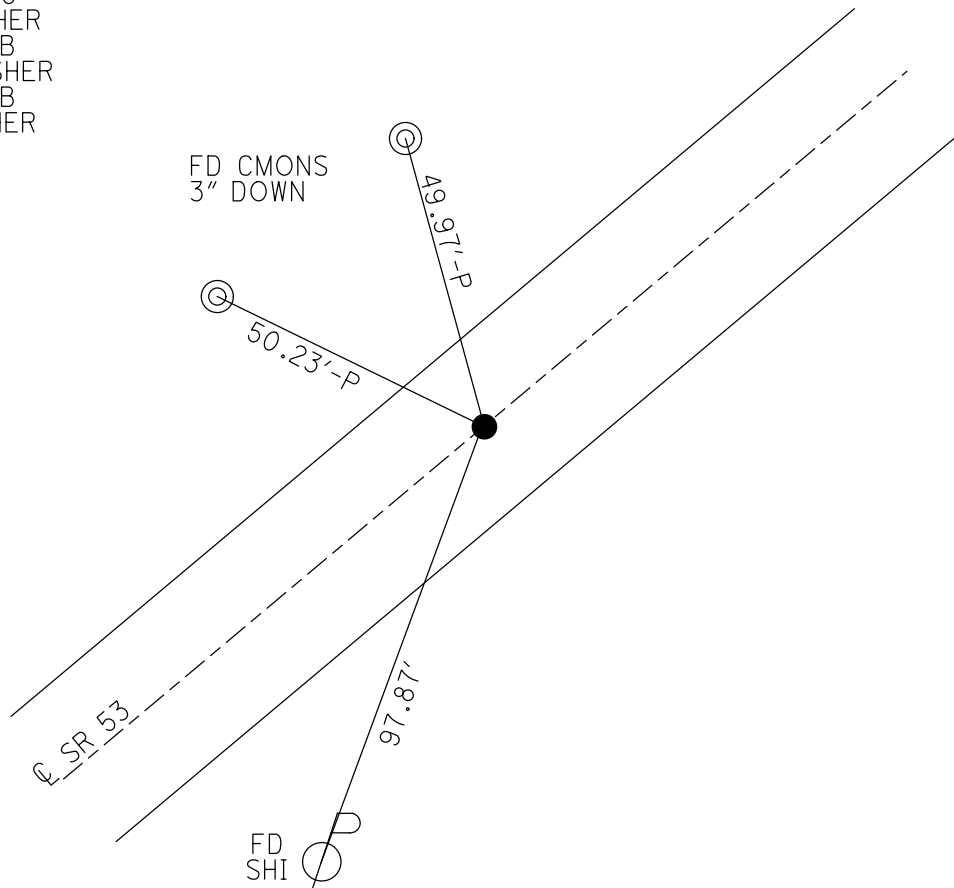
GEOID: NAVD88 2018

GRID: NORTHING: 640284.612

EASTING: 1807967.072



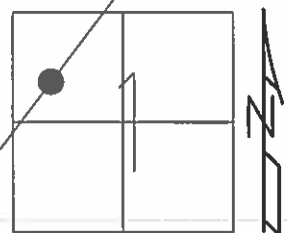
RECORD: P.I.  
 $\Delta = 00^\circ 10' RT$   
 STA. 661+29.75  
 FD P.K./WASHER  
 3/20/03, MDB  
 SET MAG/WASHER  
 6/02/03, MDB  
 FD MAG/WASHER  
 REF35  
 5/27/21, TDN



O.D.O.T. DISTRICT 2 SURVEY OFFICE (USE ONLY)

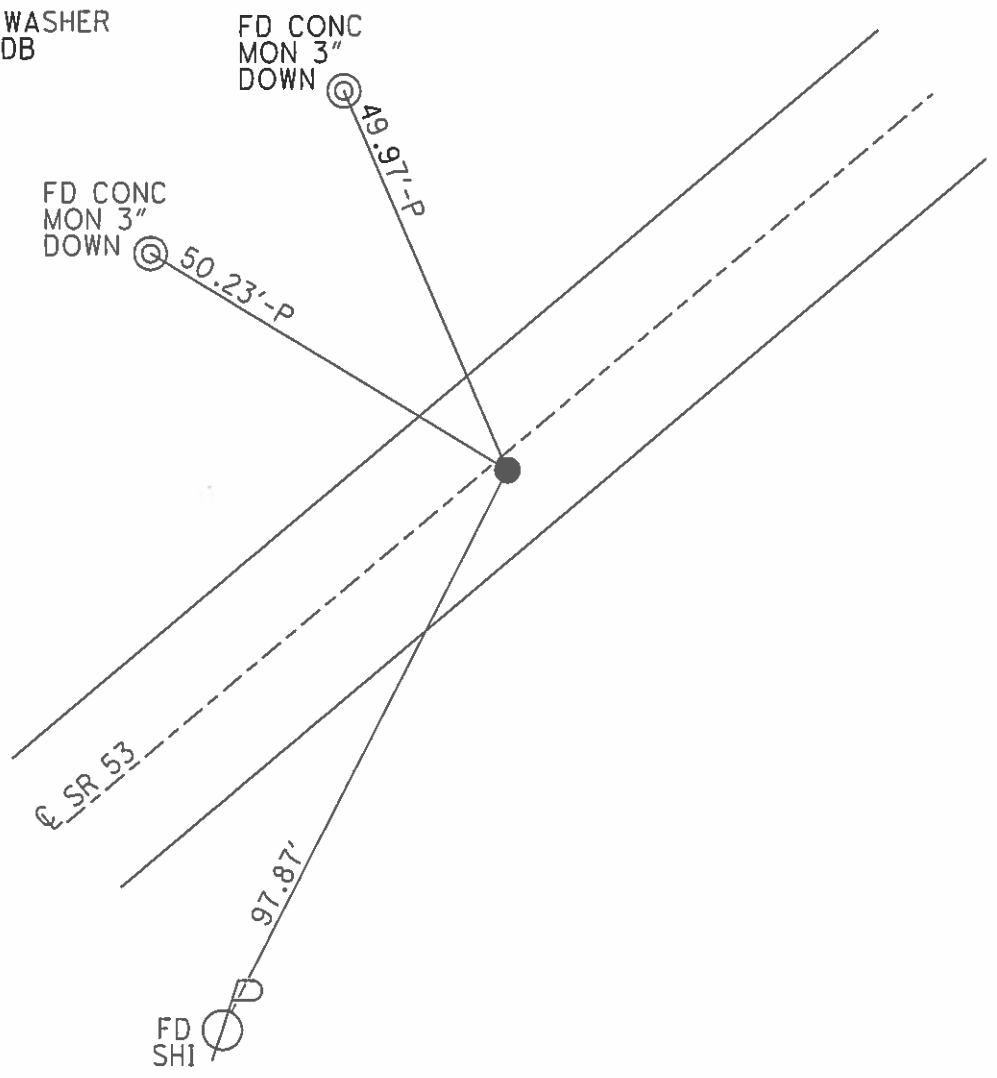
PERSONNEL	REFERENCE NO.	<u>35</u>	SHEET	<u>11</u>	OF	<u>19</u>
NOTES	HOMAN	DATE	<u>3/20/03</u>	ROUTE	<u>SR 53</u>	
H.C.	BARNHISEL	WEATHER	<u>SUNNY</u>	COUNTY	<u>SANDUSKY</u>	
R.C.	GLASS	TEMP.	<u>50°</u>	TOWNSHIP	<u>RICE</u>	
	RYALL			SECTION	<u>1</u>	
				T	<u>5</u>	N
				R	<u>15</u>	E

TYPE MONUMENT P.K. NAIL/WASHER  
 ON SURFACE - ~~BELOW~~ ON  
~~LEFT~~ Q PAV'T - ~~RIGHT~~ ON  
11.6' TO RT EDGE PAVEMENT  
 S.L.M. 786+95



Grid: Northing: \_\_\_\_\_ Easting: \_\_\_\_\_

RECORD:  
 P.I. SURV & CONST  
 $\Delta = 00^\circ 10' RT$   
 661+29.75  
 RESET MAG/WASHER  
 6/02/03, MDB



O.D.O.T. DISTRICT 2 SURVEY OFFICE

PERSONNEL

REFERENCE NO. 65

SHEET 10 OF 18

NOTES HOMAN

DATE 3-20-03

ROUTE S.R. 53

H.C. BARNHISEL

WEATHER SUNNY

COUNTY SANDUSKY

R.C. GLASS

TEMP. 50°

TOWNSHIP RICE

RYALL

SECTION 1

T 5 N R 15 E

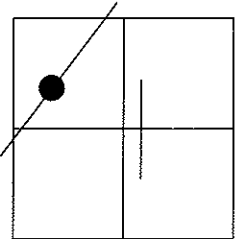
TYPE MONUMENT PK NAIL

ON SURFACE - ~~BELOW~~ YES

~~LEFT - Q PAV'T - RIGHT~~ YES

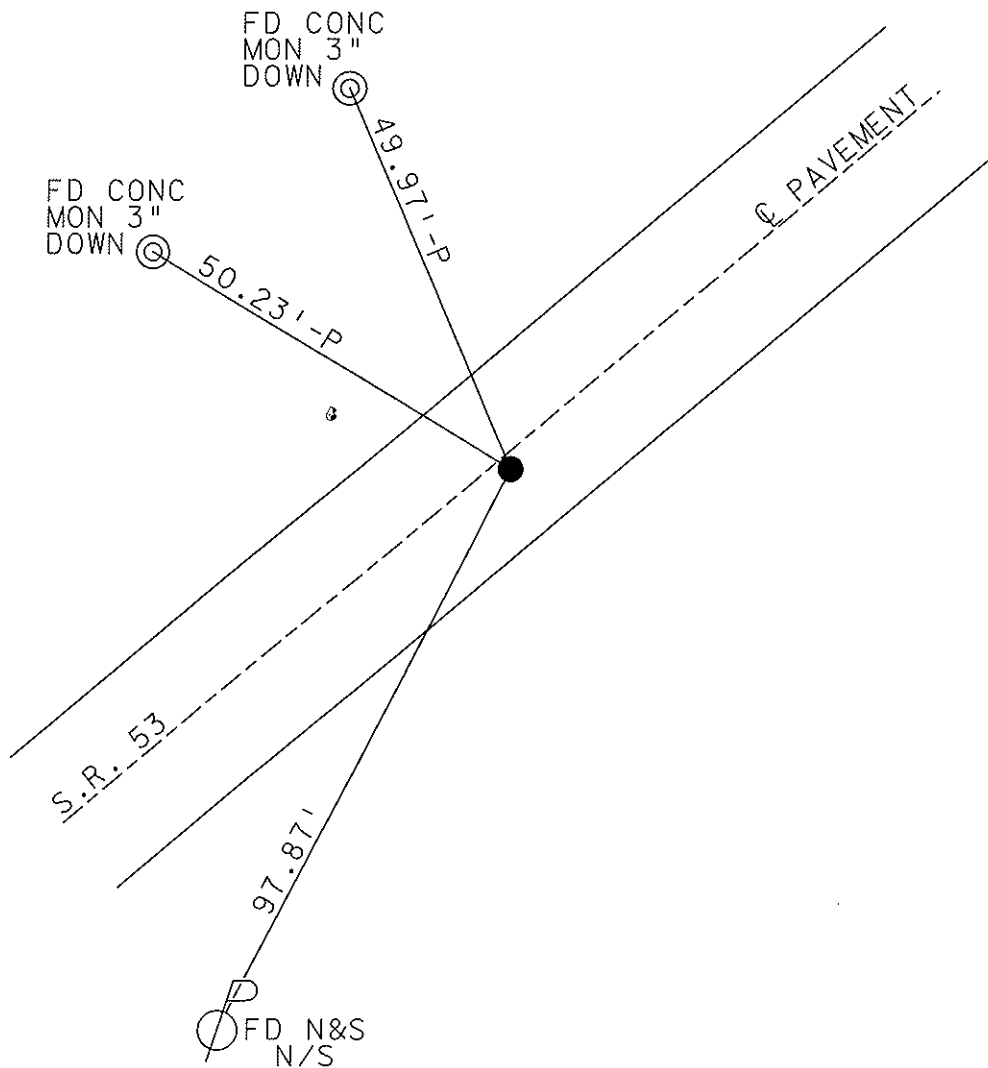
11.6' TO RT EDGE PAVEMENT

S.L.M. 786+95



P.I. SURV & CONST  
 DELTA= 00° 10' RT  
 661+29.75

RESET MAG NAIL & WASHER  
 06-02-03  
 MDB



# O.D.O.T. DISTRICT 2 SURVEY OFFICE

PERSONNEL \_\_\_\_\_

REFERENCE NO. \_\_\_\_\_

SHEET 7 OF 15

NOTES Ripple

H.C. Barbour

DATE 8/30/90

ROUTE SR#53

R.C. Geyman

WEATHER SUNNY

COUNTY SANDUSKY

TEMP. 72°

TOWNSHIP Rice

SECTION 1

T 5 N R 15 E

TYPE MONUMENT Dig When Needed

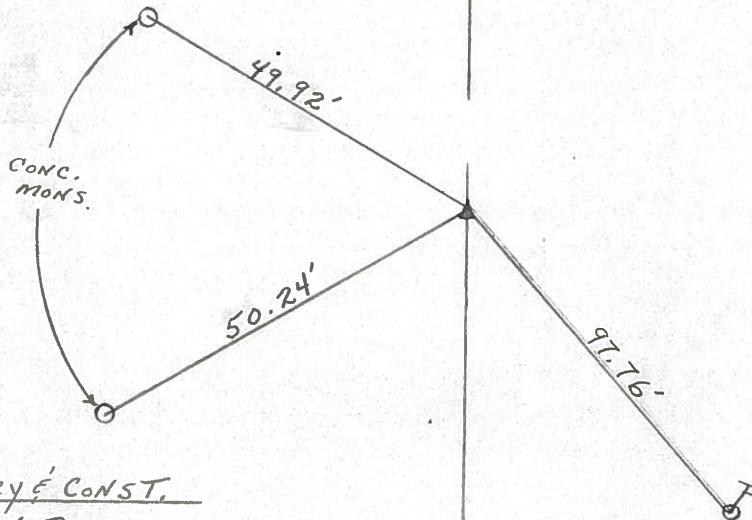
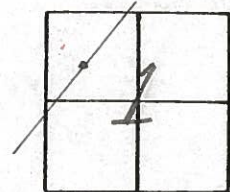
ON SURFACE - BELOW PK# washer A Top RR spike

LEFT - ☉ PAV'T. - RIGHT ☉ PAV'T.

\_\_\_\_ TO \_\_\_\_ EDGE PAVEMENT

S.L.M. \_\_\_\_\_

35



P.I. SURVEY & CONST.

$\Delta = 00^{\circ} 10' RT.$

661+29.75

☉ SR#53 ☉

County Sandusky S.R. # 53

Township Rice

Section 1

T 5 N, R 15 E

Personnel Cronin

Ripple

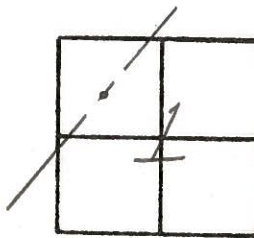
Barbour

Date 11/18/83

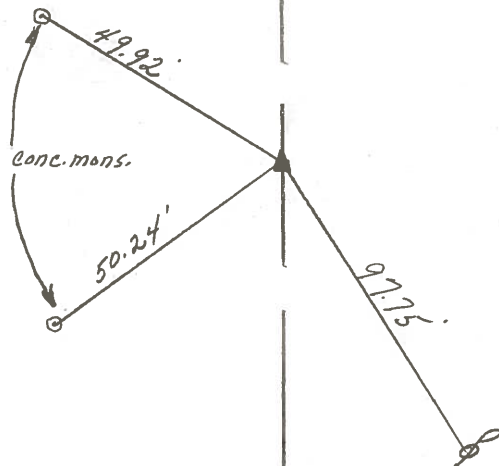
Weather overcast

Temp. 47°

(35)



P.I. Sur. & Const  
Δ = 00° 10' Rt.  
661 + 29.75  
set P.K. & washer atop  
R.R. spike (Fd.)



S.R. #53