

O.D.O.T. DISTRICT 2 SURVEY OFFICE (USE ONLY)

PERSONNEL \_\_\_\_\_ REFERENCE NO. 36 SHEET 13 OF 19  
 NOTES RHOADES DATE 11/28/23 ROUTE SR 53  
 H.C. AUBLE WEATHER CLOUDY COUNTY SANDUSKY  
 R.C. NIESE TEMP. 22° TOWNSHIP RICE  
 \_\_\_\_\_ ASTON \_\_\_\_\_ SECTION 36  
 DWG BY RHOADES PID 95760 T 5 N R 15 E

TYPE MONUMENT MAG/WASHER

ON SURFACE - ~~BELOW~~ ON

OFFSET 0 PAVEMENT ON LT : RT

12.2' TO LT EDGE PAVEMENT

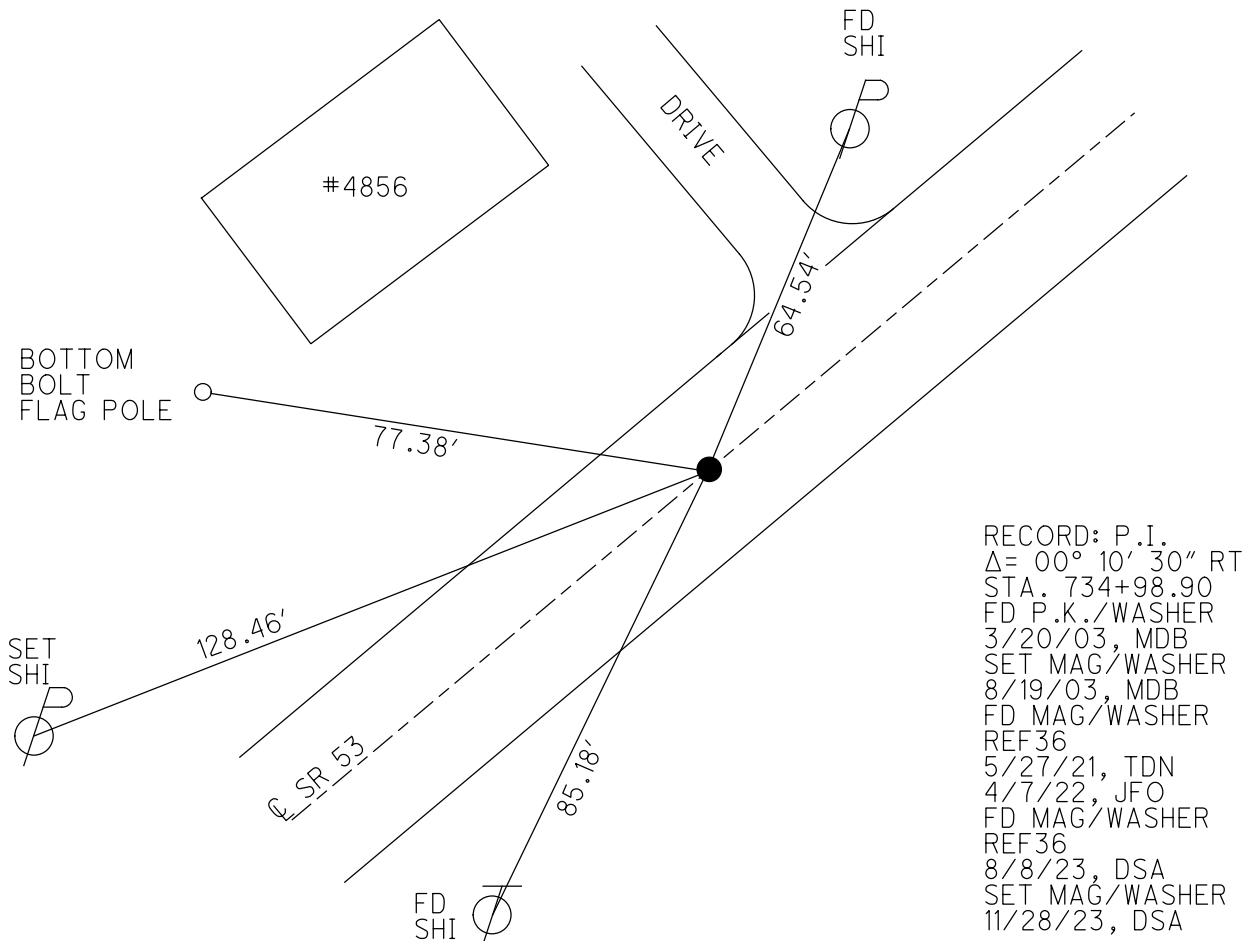
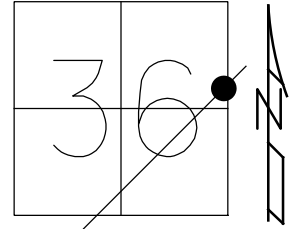
STATION: 862+04

HORIZ.DATUM: NAD83 2011

GEOID: NAVD88 2018

GRID: NORTHING: 645983.725

EASTING: 1812852.932

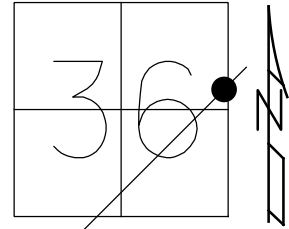


RECORD: P.I.  
 $\Delta = 00^{\circ} 10' 30''$  RT  
 STA. 734+98.90  
 FD P.K./WASHER  
 3/20/03, MDB  
 SET MAG/WASHER  
 8/19/03, MDB  
 FD MAG/WASHER  
 REF36  
 5/27/21, TDN  
 4/7/22, JFO  
 FD MAG/WASHER  
 REF36  
 8/8/23, DSA  
 SET MAG/WASHER  
 11/28/23, DSA

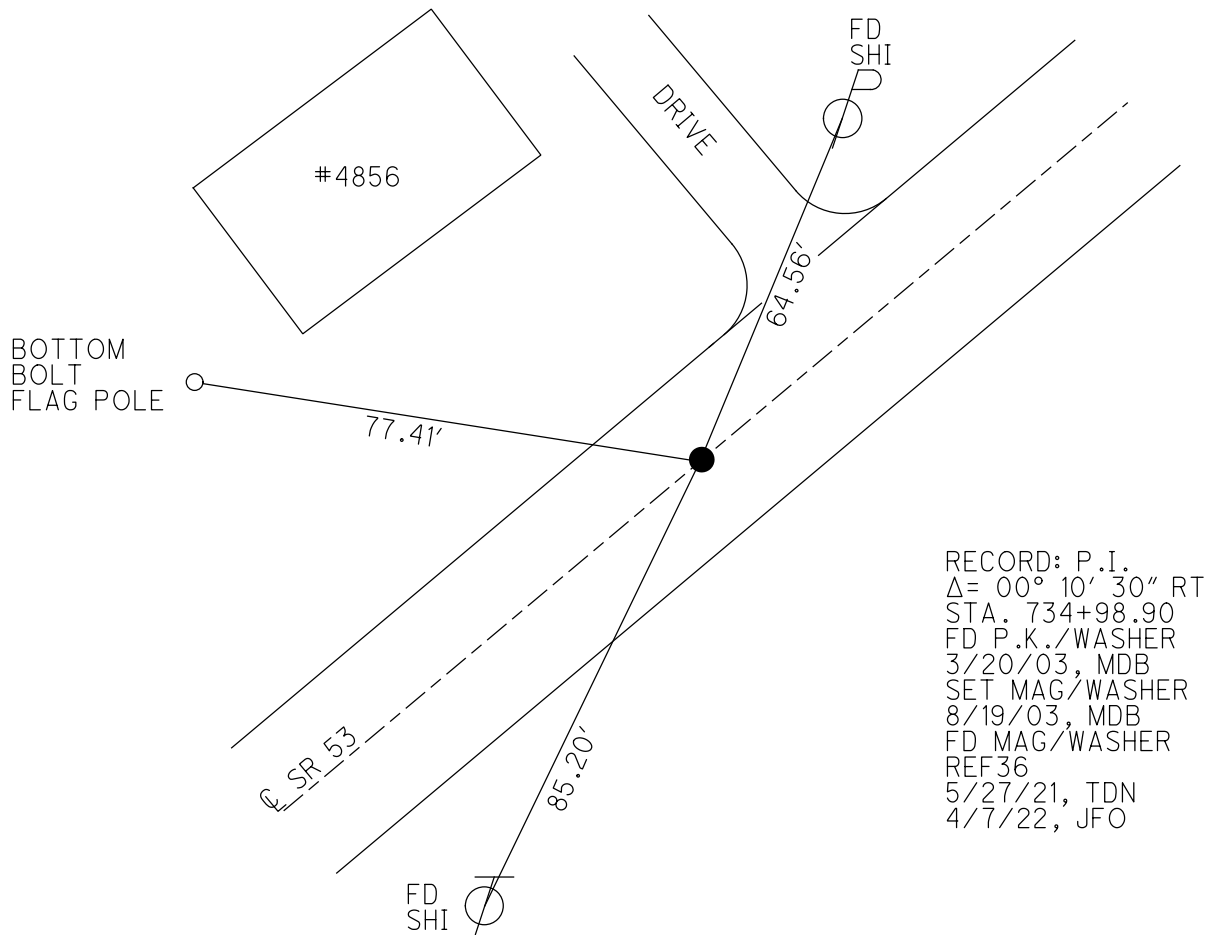
O.D.O.T. DISTRICT 2 SURVEY OFFICE (USE ONLY)

PERSONNEL \_\_\_\_\_ REFERENCE NO. 36 SHEET 13 OF 19  
 NOTES RHOADES DATE 5/27/21 ROUTE SR 53  
 H.C. NIESE WEATHER CLOUDY COUNTY SANDUSKY  
 R.C. RHOADES TEMP. 56° TOWNSHIP RICE  
 SECTION 36  
 DWG BY RHOADES PID PVTRAIN T 5 N R 15 E

TYPE MONUMENT MAG/WASHER  
 ON SURFACE - ~~BELOW~~ ON  
 OFFSET Q PAVEMENT ON LT : RT  
12.2' TO LT EDGE PAVEMENT  
 STATION: 862+04



HORZ.DATUM: NAD83 2011 GEOID: NAVD88 2018  
 GRID: NORTHING: 645983.730 EASTING: 1812852.929

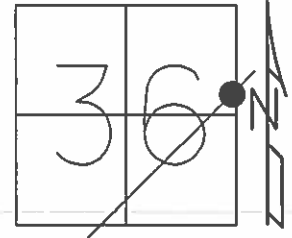


RECORD: P.I.  
 $\Delta = 00^\circ 10' 30''$  RT  
 STA. 734+98.90  
 FD P.K./WASHER  
 3/20/03, MDB  
 SET MAG/WASHER  
 8/19/03, MDB  
 FD MAG/WASHER  
 REF36  
 5/27/21, TDN  
 4/7/22, JFO

O.D.O.T. DISTRICT 2 SURVEY OFFICE (USE ONLY)

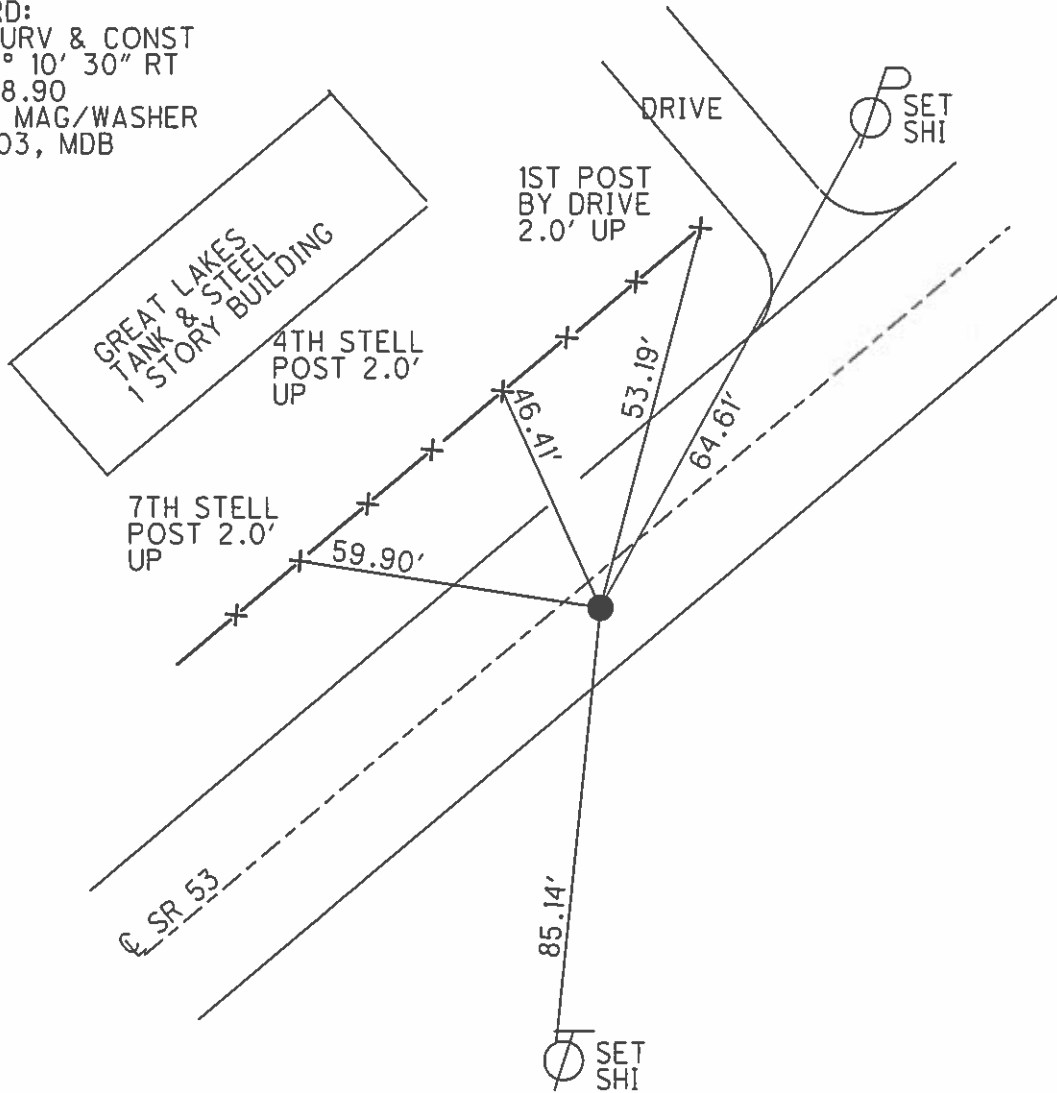
PERSONNEL	REFERENCE NO.	<u>36</u>	SHEET	<u>13</u>	OF	<u>19</u>
NOTES	HOMAN	DATE	<u>3/20/03</u>	ROUTE	<u>SR 53</u>	
H.C.	BARNHESEL	WEATHER	<u>SUNNY</u>	COUNTY	<u>SANDUSKY</u>	
R.C.	GLASS	TEMP.	<u>65°</u>	TOWNSHIP	<u>RICE</u>	
	RYALL			SECTION	<u>36</u>	
				T	<u>5</u>	N
				R	<u>16</u>	E

TYPE MONUMENT P.K. NAIL/WASHER  
 ON SURFACE - ~~BELOW~~ ON  
~~LEFT~~  $\odot$  PAV'T - ~~RIGHT~~ ON  
12.2' TO LT EDGE PAVEMENT  
 S.L.M. 862+04



Grid: Northing:            -            Easting:            -           

RECORD:  
 P.I. SURV & CONST  
 $\Delta = 00^{\circ} 10' 30''$  RT  
 734+98.90  
 RESET MAG/WASHER  
 8/19/03, MDB



O.D.O.T. DISTRICT 2 SURVEY OFFICE

PERSONNEL

REFERENCE NO. 36

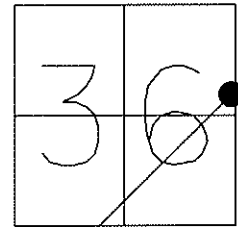
SHEET 12 OF 18

NOTES HOMAN  
 H.C. BARNHISEL  
 R.C. GLASS  
RYALL

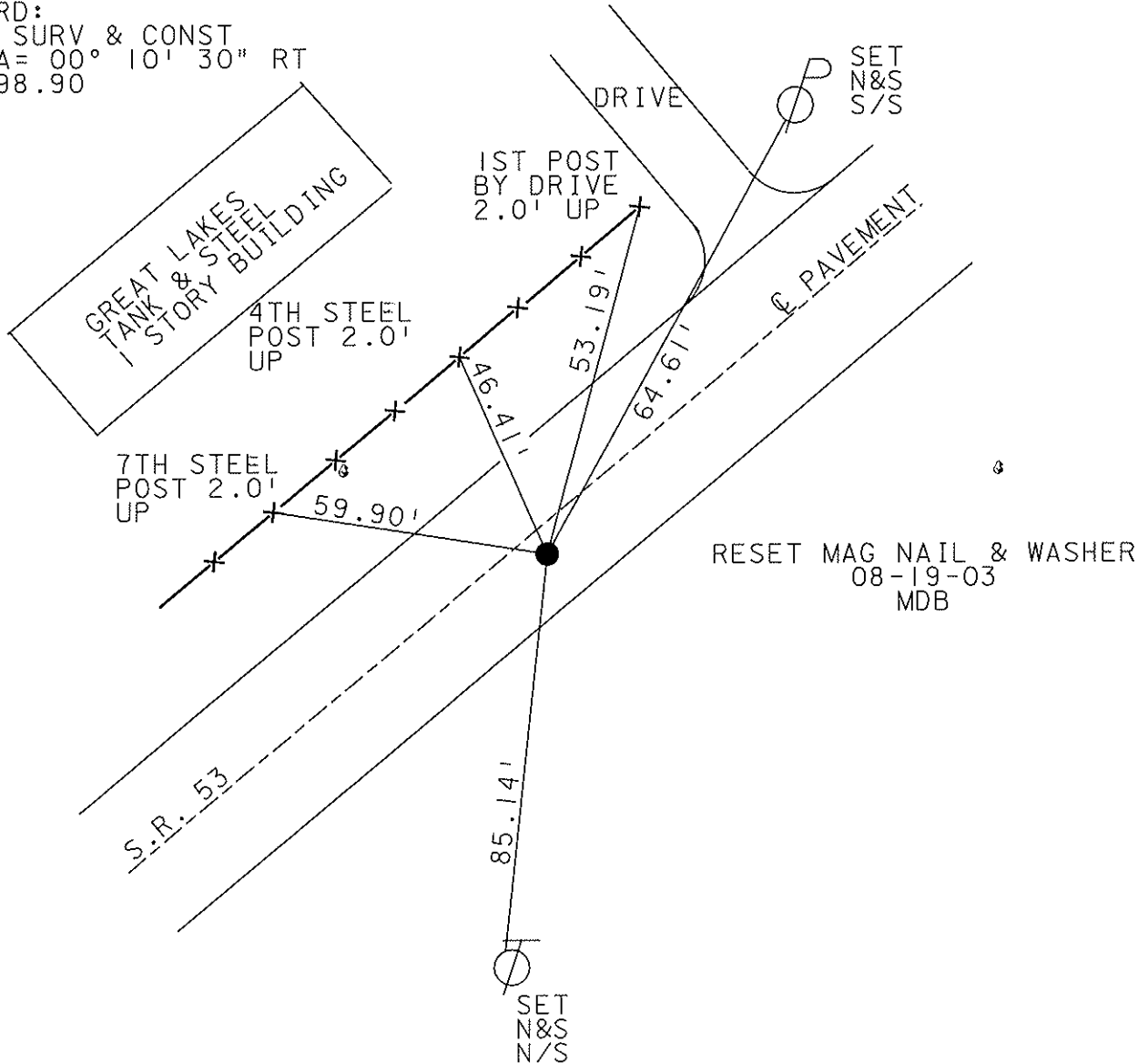
DATE 3-20-03  
 WEATHER SUNNY  
 TEMP. 65°

ROUTE S.R. 53  
 COUNTY SANDUSKY  
 TOWNSHIP RICE  
 SECTION 36  
T 5 N R 15 E

TYPE MONUMENT PK NAIL  
 ON SURFACE - ~~BELOW~~ YES  
~~LEFT - Q PAV'T - RIGHT~~ YES  
12.2' TO LT EDGE PAVEMENT  
 S.L.M. 862+04



RECORD:  
 P.I. SURV & CONST  
 DELTA = 00° 10' 30" RT  
 734+98.90



# O.D.O.T. DISTRICT 2 SURVEY OFFICE

PERSONNEL \_\_\_\_\_

REFERENCE NO. \_\_\_\_\_

SHEET 9 OF 15

NOTES Pipple

H.C. BARBOUR

DATE 8-30-90

ROUTE 53

R.C. GREYMAN

WEATHER SUNNY

COUNTY SAND

TEMP. 83°

TOWNSHIP Rice

SECTION 36

T 5 N R 15 E

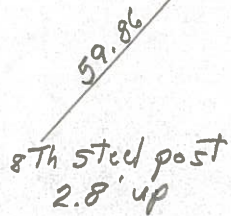
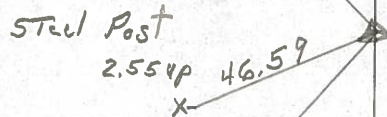
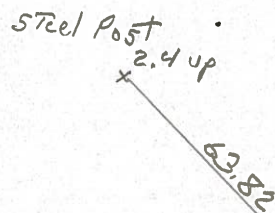
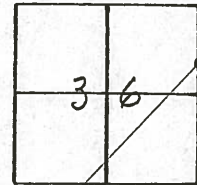
TYPE MONUMENT Set P.K. + Washer  
 ON SURFACE - BELOW R/R spike 5" down

LEFT - ☉ PAV'T. - RIGHT ☉

TO \_\_\_\_\_ EDGE PAVEMENT

S.L.M. \_\_\_\_\_

36



PI. SUR + CONST.  
 $\Delta = 00^{\circ} 10' 30''$  RT.  
734 + 98.90

County Sandusky S.R. # 53

Township Rice

Section 36

T5N, R15E

Personnel Cronin

Ripple

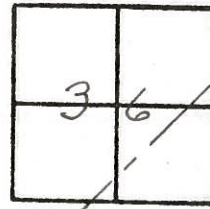
Barbour

Date 11/18/83

Weather overcast

Temp. 48°

36

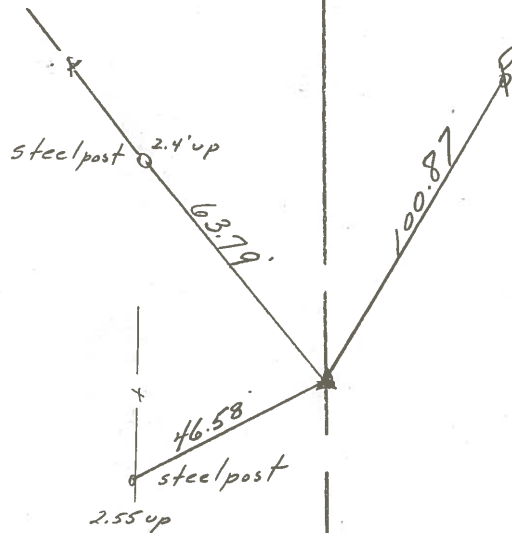


P.I. Sur & Const

Δ = 00° 10' 30" Rt.

734+98.90

Set P.K. and washer  
at top R.R. spike (Fd.)



S.R. #53