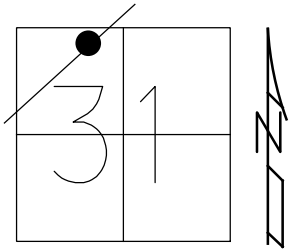


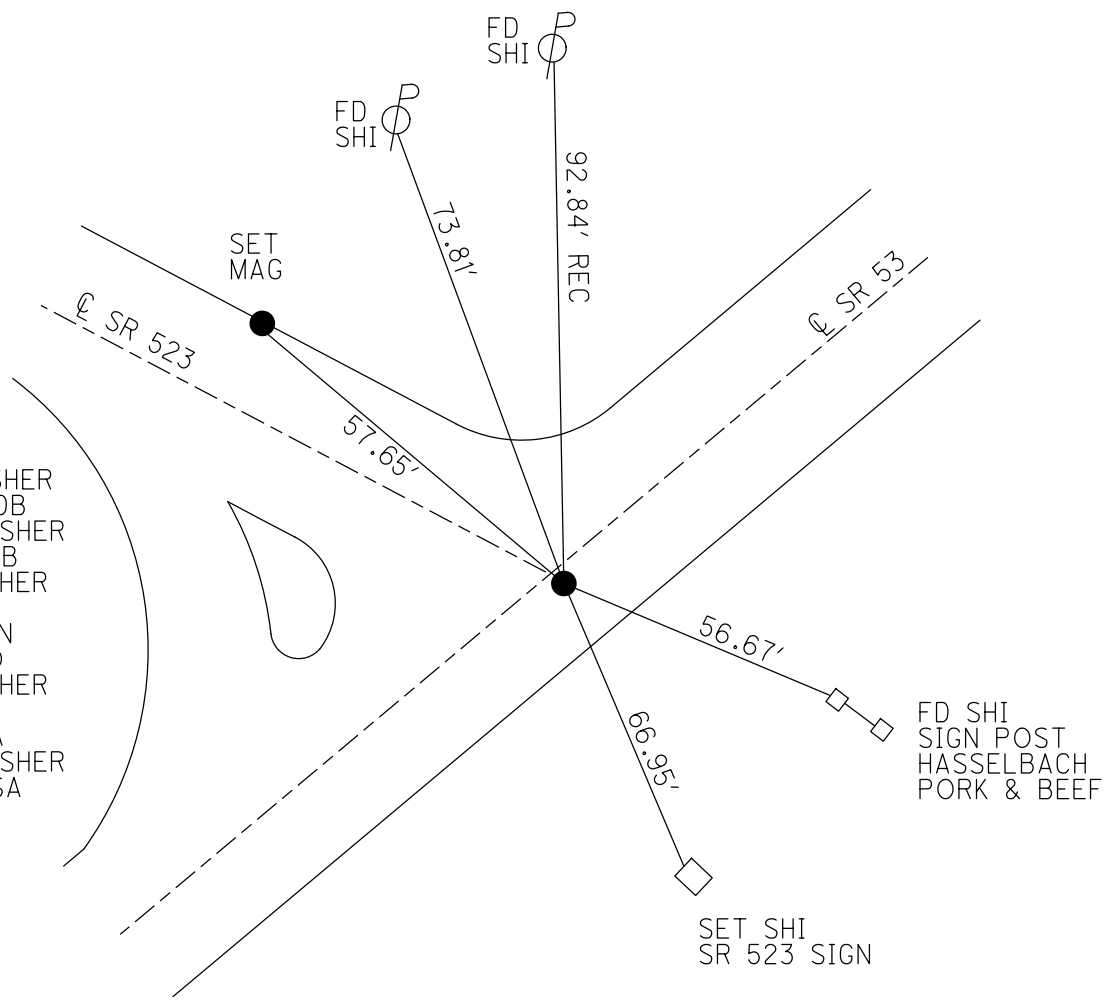
O.D.O.T. DISTRICT 2 SURVEY OFFICE (USE ONLY)

PERSONNEL \_\_\_\_\_ REFERENCE NO. 36 A SHEET 14 OF 19  
 NOTES RHOADES DATE 11/28/23 ROUTE SR 53  
 H.C. AUBLE WEATHER SUNNY COUNTY SANDUSKY  
 R.C. NIESE TEMP. 22° TOWNSHIP RICE  
 \_\_\_\_\_ ASTON \_\_\_\_\_ SECTION 31  
 DWG BY RHOADES PID 95760 T 5 N R 16 E

TYPE MONUMENT MAG/WASHER  
 ON SURFACE - ~~BELOW~~ ON \_\_\_\_\_  
 OFFSET  $\odot$  PAVEMENT 0.5' ~~LT~~ : RT  
11.4' TO RT EDGE PAVEMENT  
 STATION: 882+60



HORIZ.DATUM: NAD83 2011 GEOID: NAVD88 2018  
 GRID: NORTHING: 647543.397 EASTING: 1814192.659



RECORD:  
 FD P.K./WASHER  
 3/20/02, MDB  
 SET MAG/WASHER  
 8/19/03, MDB  
 FD MAG/WASHER  
 REFA36  
 5/27/21, TDN  
 4/7/22, JFO  
 FD MAG/WASHER  
 REF36A  
 8/8/23, DSA  
 SET MAG/WASHER  
 11/28/23, DSA

O.D.O.T. DISTRICT 2 SURVEY OFFICE (USE ONLY)

PERSONNEL

REFERENCE NO. 36 A

SHEET 14 OF 19

NOTES RHOADES

DATE 5/27/21

ROUTE SR 53

H.C. NIESE

WEATHER CLOUDY

COUNTY SANDUSKY

R.C. RHOADES

TEMP. 56°

TOWNSHIP RICE

SECTION 31

DWG BY RHOADES

PID PVTRAIN

T 5 N R 16 E

TYPE MONUMENT MAG/WASHER

ON SURFACE - ~~BELOW~~ ON

OFFSET Q PAVEMENT 0.5' ~~LT~~ : RT

11.4' TO RT EDGE PAVEMENT

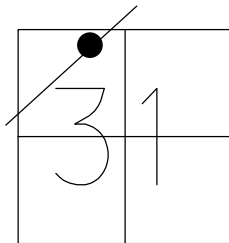
STATION: 882+60

HORZ. DATUM: NAD83 2011

GEOID: NAVD88 2018

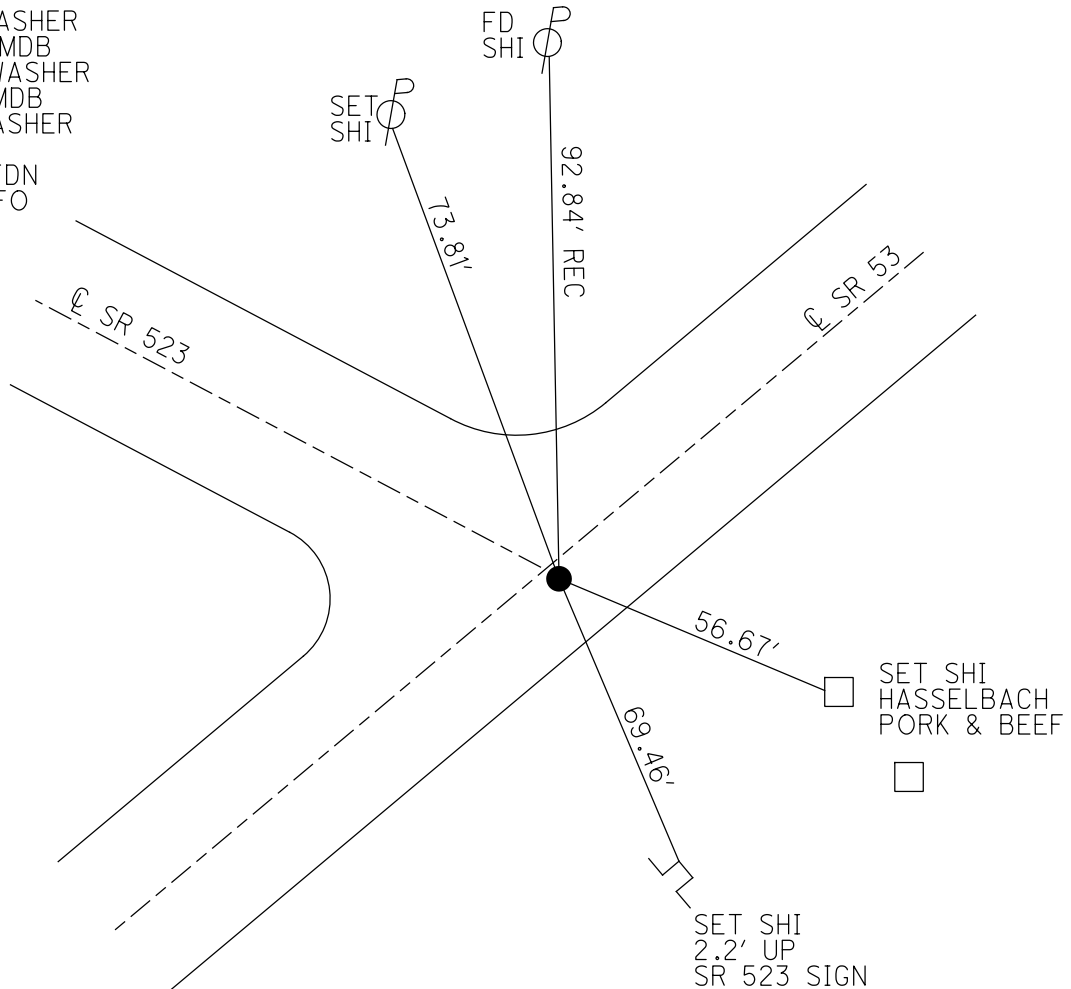
GRID: NORTHING: 647543.419

EASTING: 1814192.699



RECORD:

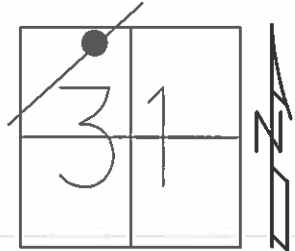
FD P.K./WASHER  
3/20/02, MDB  
SET MAG/WASHER  
8/19/03, MDB  
FD MAG/WASHER  
REFA36  
5/27/21, TDN  
4/7/22, JFO



O.D.O.T. DISTRICT 2 SURVEY OFFICE (USE ONLY)

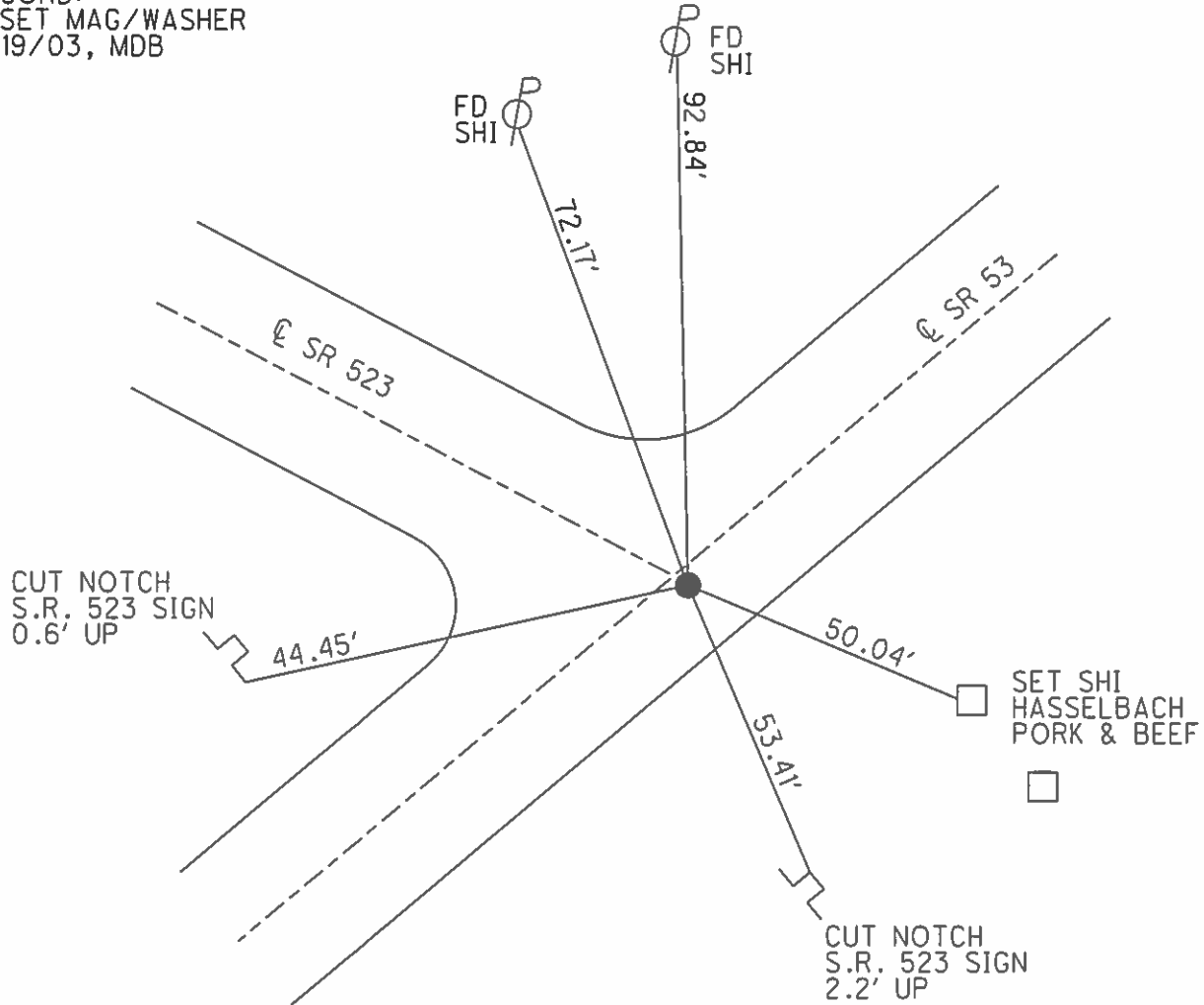
|           |               |         |         |          |          |    |
|-----------|---------------|---------|---------|----------|----------|----|
| PERSONNEL | REFERENCE NO. | 36-A    | SHEET   | 14       | OF       | 19 |
| NOTES     | HOMAN         | DATE    | 3/20/03 | ROUTE    | SR 53    |    |
| H.C.      | BARNHISEL     | WEATHER | SUNNY   | COUNTY   | SANDUSKY |    |
| R.C.      | GLASS         | TEMP.   | 65°     | TOWNSHIP | RICE     |    |
|           | RYALL         |         |         | SECTION  | 31       |    |
|           |               |         |         | 5 5 N    | R 16 E   |    |

TYPE MONUMENT P.K. NAIL/WASHER  
 ON SURFACE - ~~BELOW~~ ON  
~~LEFT~~  $\odot$  PAV'T - RIGHT 0.5'  
11.4' TO RT EDGE PAVEMENT  
 S.L.M. 882+60



Grid: Northing: \_\_\_\_\_ Easting: \_\_\_\_\_

RECORD:  
 RESET MAG/WASHER  
 8/19/03, MDB



O.D.O.T. DISTRICT 2 SURVEY OFFICE

PERSONNEL

REFERENCE NO. 36-A

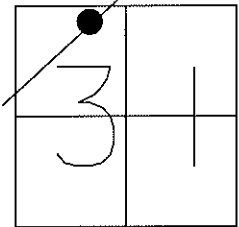
SHEET 13 OF 18

NOTES HOMAN  
 H.C. BARNHISEL  
 R.C. GLASS  
RYALL

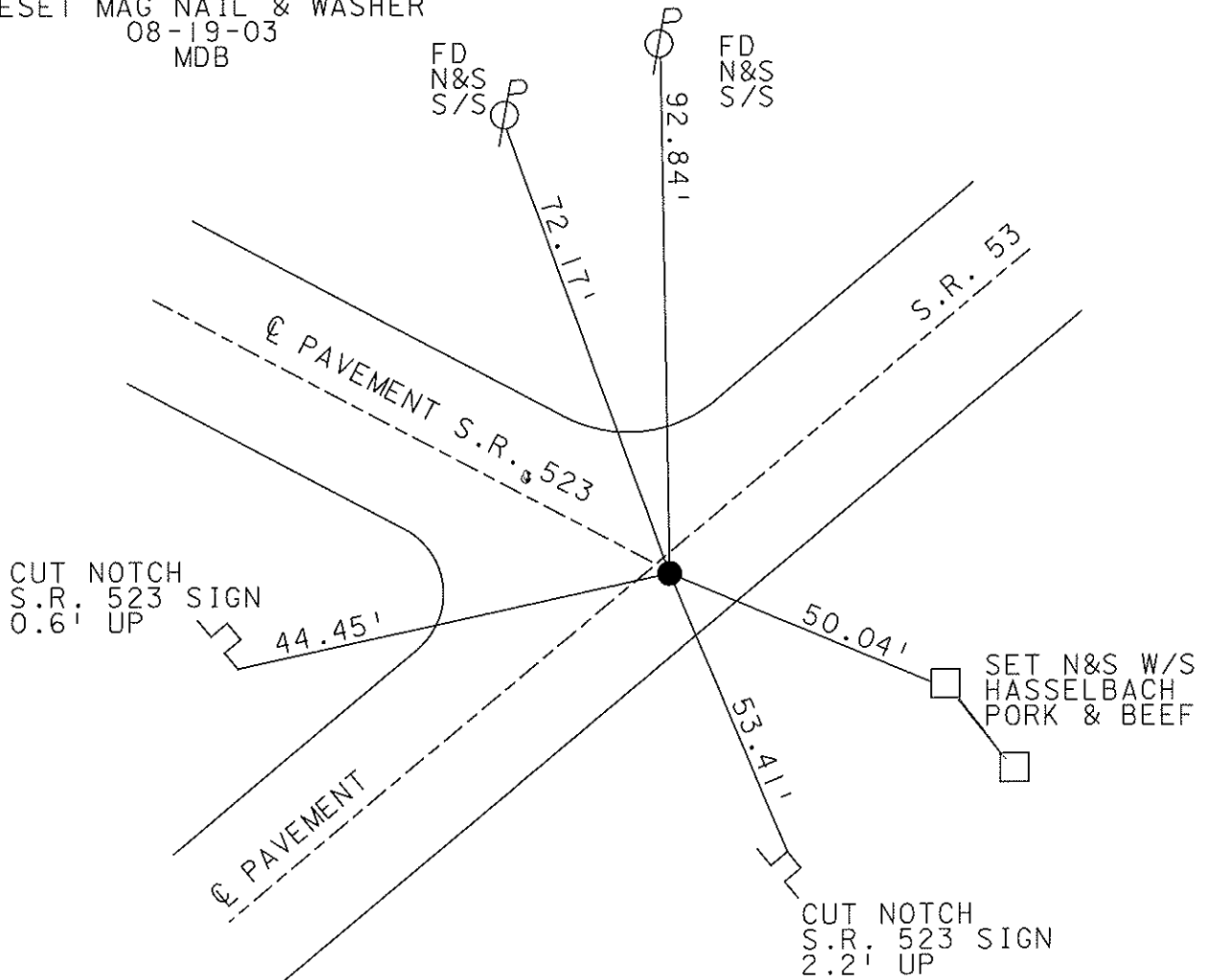
DATE 3-20-03  
 WEATHER SUNNY  
 TEMP. 65°

ROUTE S.R. 53  
 COUNTY SANDUSKY  
 TOWNSHIP RICE  
 SECTION 31  
T 5 N R 16 E

TYPE MONUMENT PK NAIL & WASHER  
 ON SURFACE - ~~BELOW~~ YES  
~~LEFT - Q~~ PAV'T - RIGHT 0.5'  
11.4' TO RT EDGE PAVEMENT  
 S.L.M. 882+60



RESET MAG NAIL & WASHER  
 08-19-03  
 MDB



O.D.O.T. DISTRICT 2 SURVEY OFFICE

PERSONNEL \_\_\_\_\_

REFERENCE NO. \_\_\_\_\_

SHEET 10 OF 15

NOTES Ripple

H.C. Barbour

R.G. Geyman

DATE 8-30-90

WEATHER SUNNY

TEMP. 85

ROUTE 53

COUNTY SAND

TOWNSHIP Rice

SECTION 31

T. 5 N. R. 16 E.

TYPE MONUMENT \_\_\_\_\_

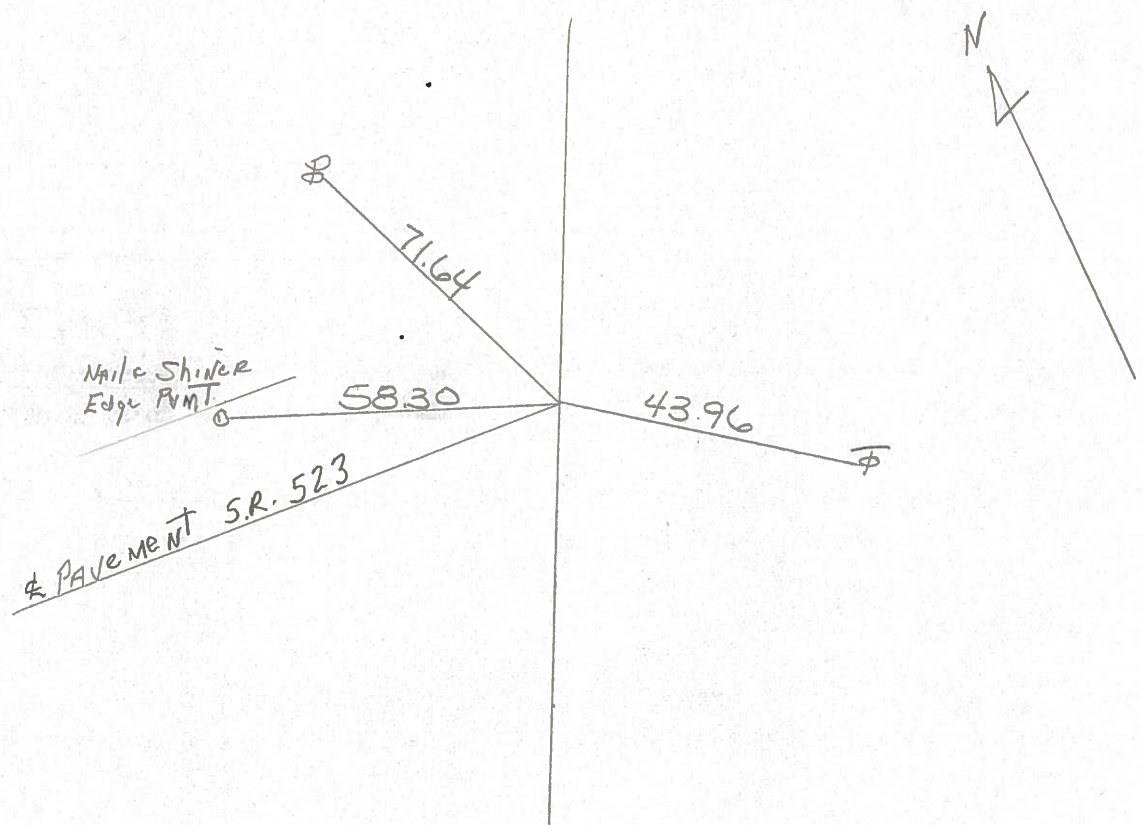
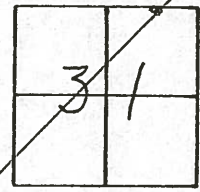
ON SURFACE - BELOW PK + Washer 4' Down

LEFT - € PAV'T. - RIGHT \_\_\_\_\_

TO \_\_\_\_\_ EDGE PAVEMENT

S.L.M. \_\_\_\_\_

**36A**



County Sandusky S.R. #53

Township Rice

Section 31

T5N, R16E

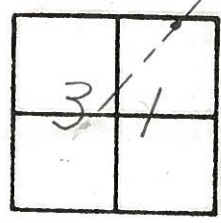
Personnel Cronin  
Ripple  
Barbour

Date 11/18/23

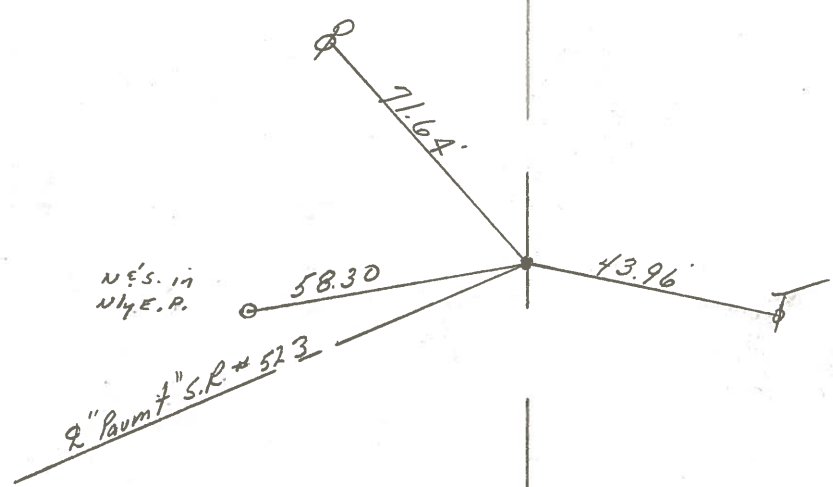
Weather overcast

Temp. 48°

36A



set P.R. & washer atop  
P.R. & washer (Fd.)



2" S.R. # 537