

O.D.O.T. DISTRICT 2 SURVEY OFFICE (USE ONLY)

PERSONNEL	REFERENCE NO. <u>36 B</u>	SHEET <u>15</u> OF <u>19</u>
NOTES <u>RHOADES</u>	DATE <u>11/28/23</u>	ROUTE <u>SR 53</u>
H.C. <u>AUBLE</u>	WEATHER <u>SUNNY</u>	COUNTY <u>SANDUSKY</u>
R.C. <u>NIESE</u>	TEMP. <u>22°</u>	TOWNSHIP <u>RICE</u>
<u>ASTON</u>		SECTION <u>30</u>
DWG BY <u>RHOADES</u>	PID <u>95760</u>	T <u>5</u> N R <u>16</u> E

TYPE MONUMENT MAG/WASHER

ON SURFACE - ~~BELOW~~ ON

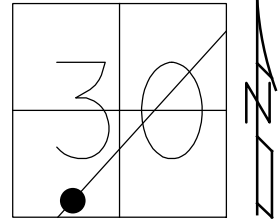
OFFSET 12.5' TO LT EDGE PAVEMENT LT : RT

12.5' TO LT EDGE PAVEMENT

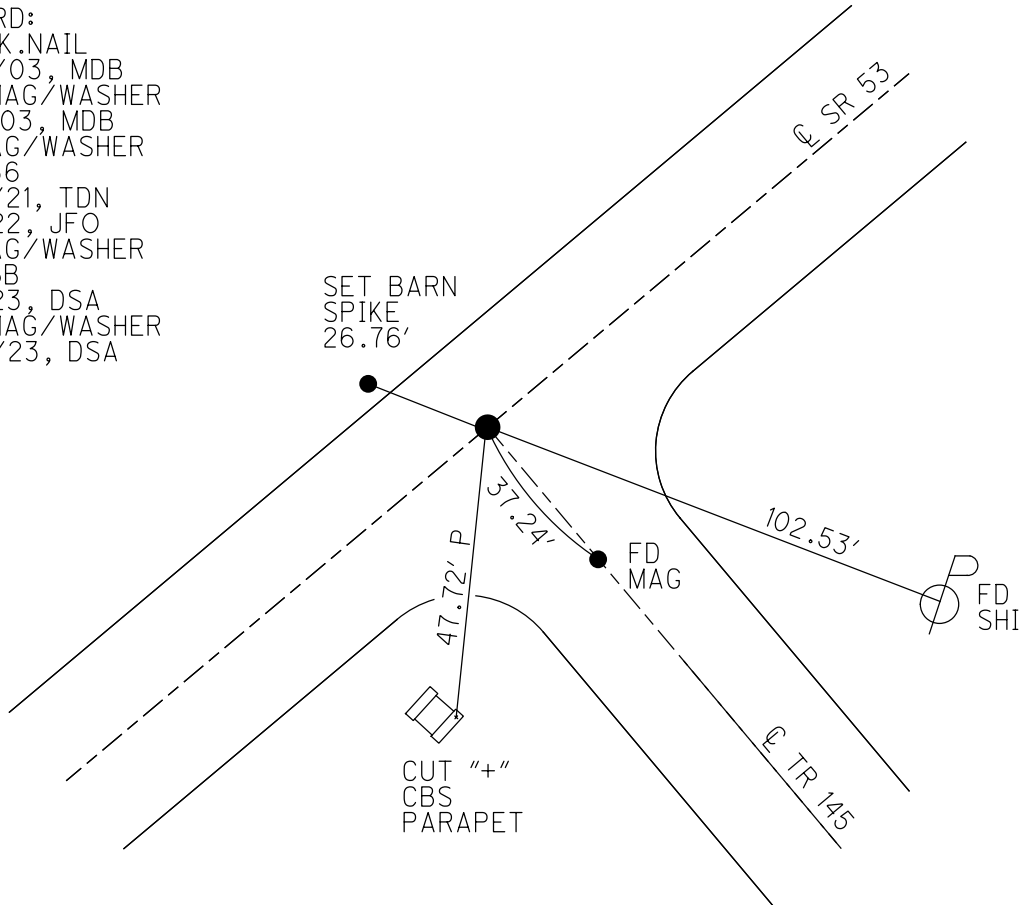
STATION: 885+44

HORIZ.DATUM: NAD83 2011 GEOID: NAVD88 2018

GRID: NORTHING: 647757.666 EASTING: 1814376.516



RECORD:
 FD P.K.NAIL
 3/20/03, MDB
 SET MAG/WASHER
 8/19/03, MDB
 FD MAG/WASHER
 REFB36
 5/27/21, TDN
 4/7/22, JFO
 FD MAG/WASHER
 REF36B
 8/8/23, DSA
 SET MAG/WASHER
 11/28/23, DSA



O.D.O.T. DISTRICT 2 SURVEY OFFICE (USE ONLY)

PERSONNEL _____ REFERENCE NO. 36 B SHEET 15 OF 19
 NOTES RHOADES DATE 5/27/21 ROUTE SR 53
 H.C. NIESE WEATHER CLOUDY COUNTY SANDUSKY
 R.C. RHOADES TEMP. 56° TOWNSHIP RICE
 DWG BY RHOADES PID PVTRAIN SECTION 30
 T 5 N R 16 E

TYPE MONUMENT MAG/WASHER

ON SURFACE - ~~BELOW~~ ON

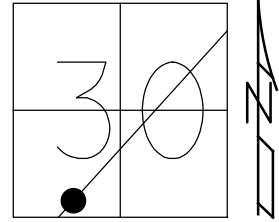
OFFSET \odot PAVEMENT 0.5' ~~RT~~ : RT

12.5' TO LT EDGE PAVEMENT

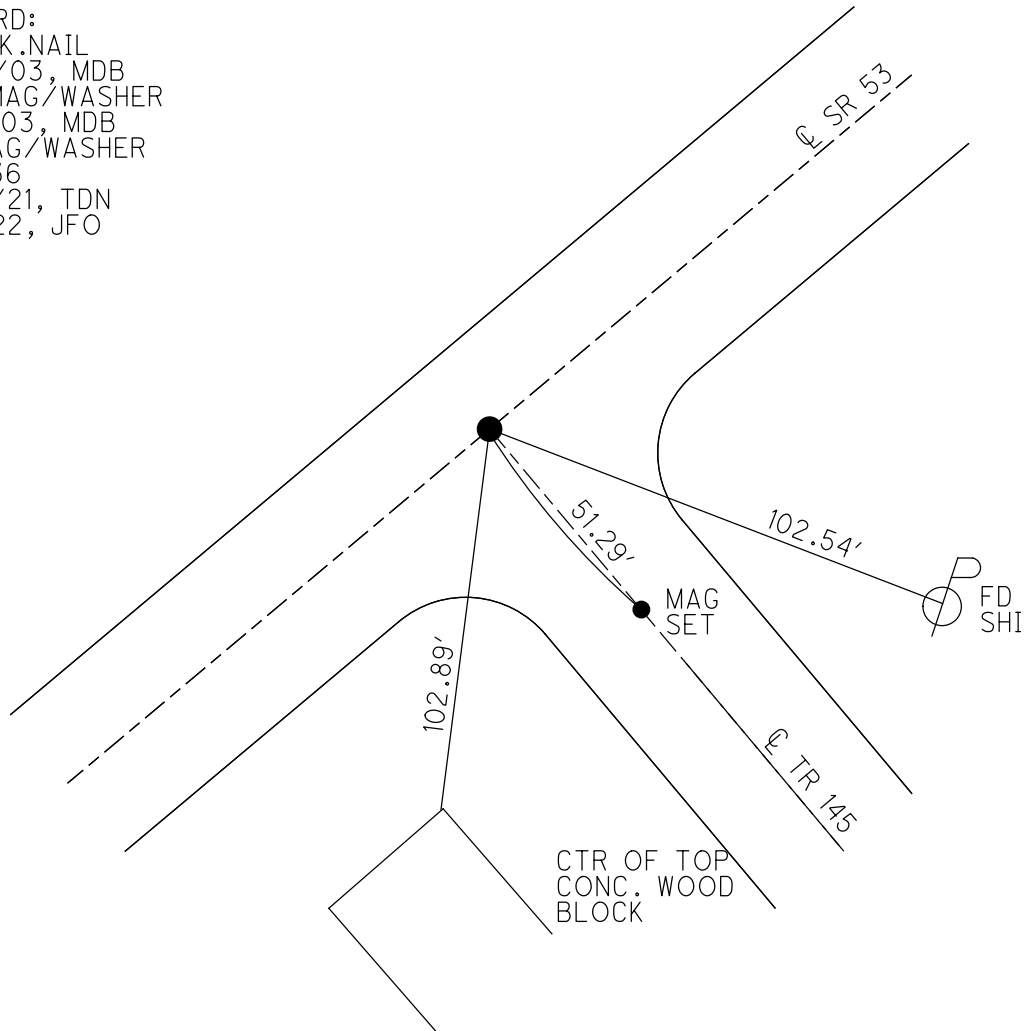
STATION: 885+44

HORZ.DATUM: NAD83 2011 GEOID: NAVD88 2018

GRID: NORTHING: 647757.646 EASTING: 1814376.566



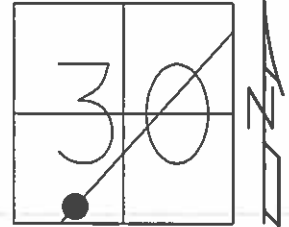
RECORD:
 FD P.K.NAIL
 3/20/03, MDB
 SET MAG/WASHER
 8/19/03, MDB
 FD MAG/WASHER
 REFB36
 5/27/21, TDN
 4/7/22, JFO



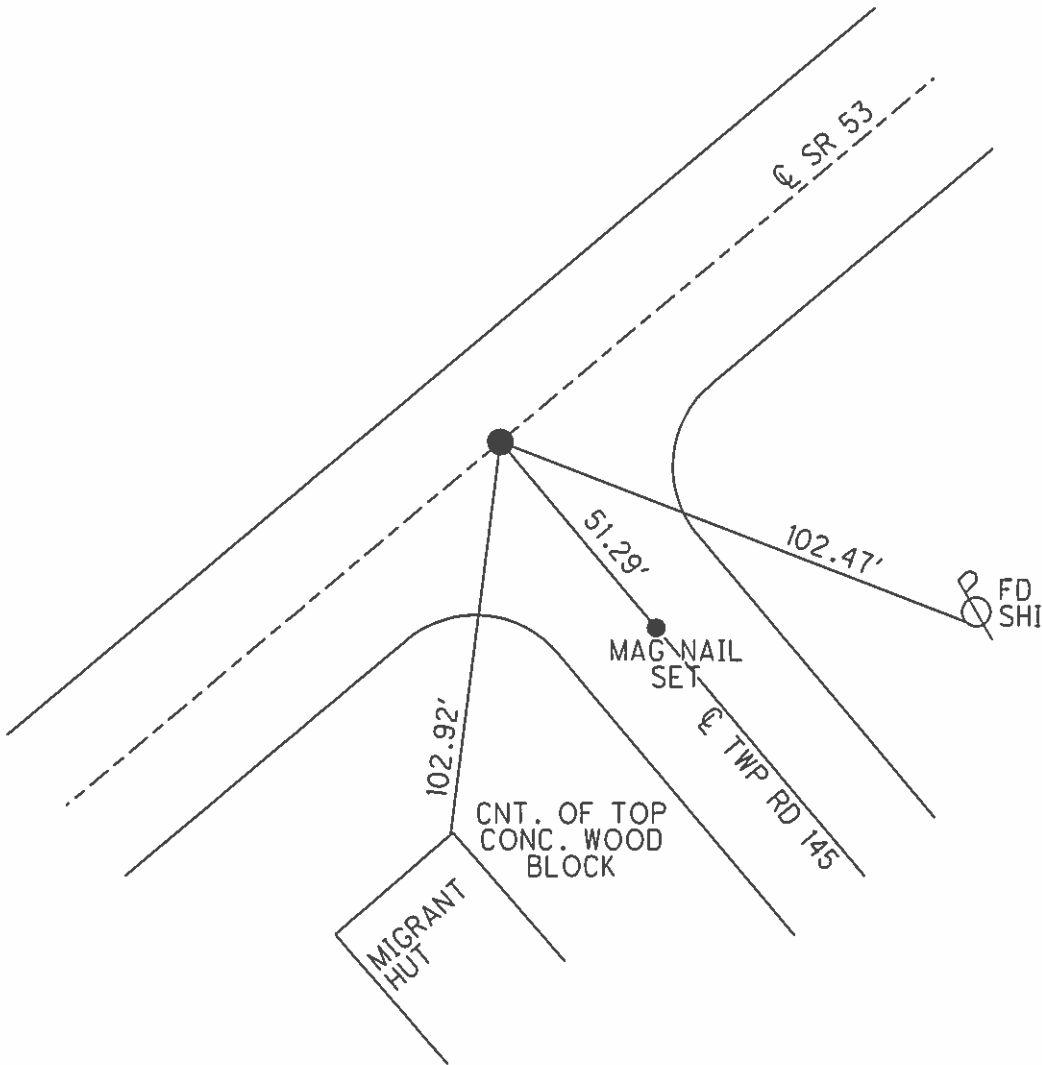
O.D.O.T. DISTRICT 2 SURVEY OFFICE (USE ONLY)

PERSONNEL	REFERENCE NO.	36-B	SHEET	15	OF	19
NOTES	HOMAN	DATE	3/20/03	ROUTE	SR 53	
H.C.	BARNHISEL	WEATHER	SUNNY	COUNTY	SANDUSKY	
R.C.	GLASS	TEMP.	65°	TOWNSHIP	RICE	
	RYALL			SECTION	30	
				T	5	N
				R	16	E

TYPE MONUMENT P.K. NAIL
 ON SURFACE - ~~BELOW~~ ON
~~LEFT~~ ϕ PAV'T - ~~RIGHT~~ ON
12.5' TO LT EDGE PAVEMENT
 S.L.M. 885+44
 Grid: Northing: _____ Easting: _____



RECORD:
 RESET MAG/WASHER
 8/19/03, MDB



O.D.O.T. DISTRICT 2 SURVEY OFFICE

PERSONNEL

REFERENCE NO. 36-B

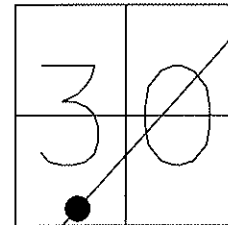
SHEET 14 OF 18

NOTES HOMAN
 H.C. BARNHISEL
 R.C. GLASS
RYALL

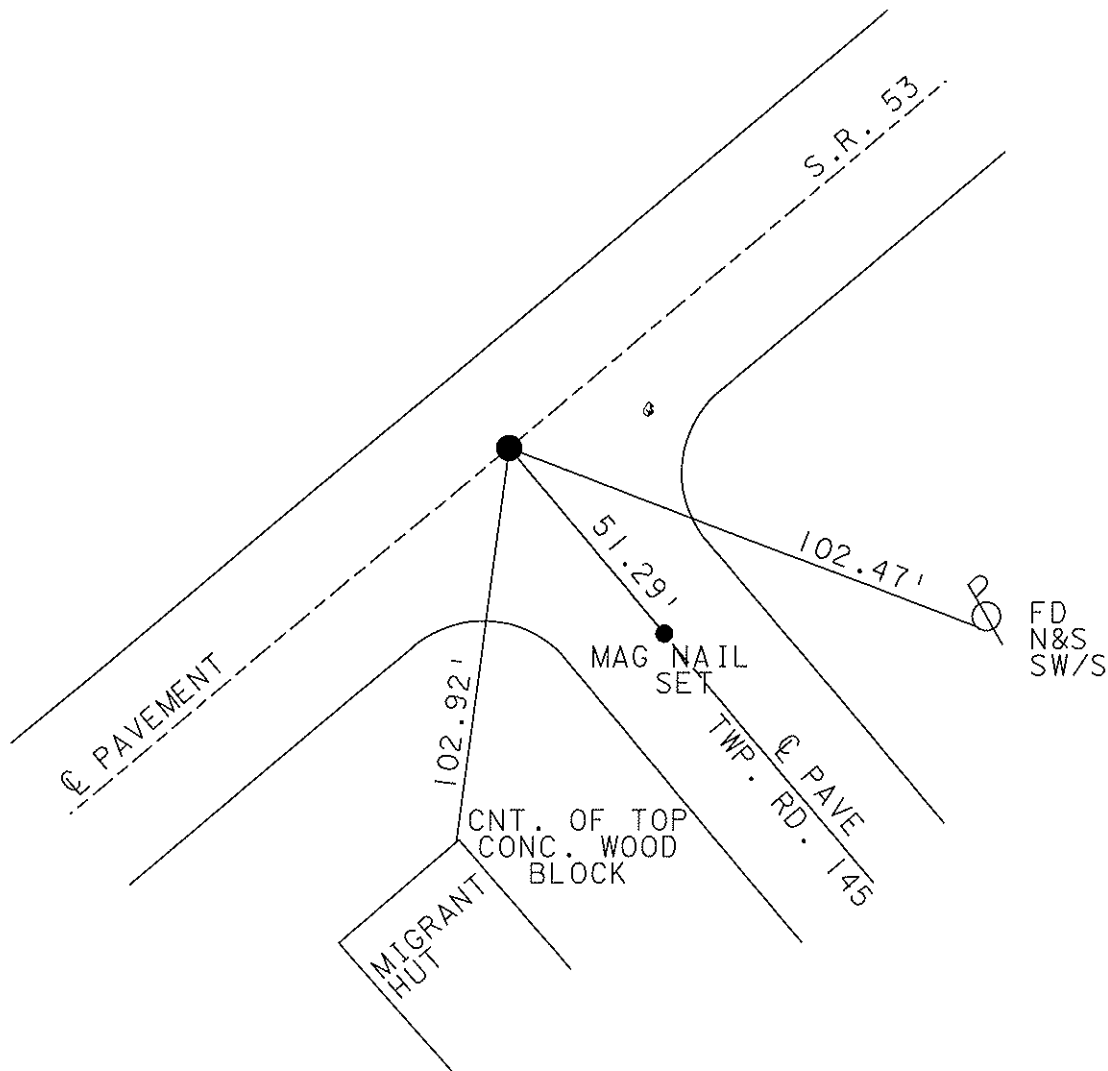
DATE 3-20-03
 WEATHER SUNNY
 TEMP. 65°

ROUTE S.R. 53
 COUNTY SANDUSKY
 TOWNSHIP RICE
 SECTION 30
T 5 N R 16 E

TYPE MONUMENT PK NAIL
~~ON SURFACE~~ - BELOW RR Spk .5'
~~LEFT - Q PAV'T - RIGHT~~ YES
12.5' TO LT EDGE PAVEMENT
 S.L.M. 885+44



RESET MAG NAIL & WASHER
 06-02-03
 MDB



O.D.O.T. DISTRICT 2 SURVEY OFFICE

PERSONNEL

REFERENCE NO. _____

SHEET 11 OF 15

NOTES Ripple

H.C. BARBOUR

R.C. GEYMAN

DATE 8-30-90

WEATHER SUNNY

TEMP. 83°

ROUTE 53

COUNTY SAND

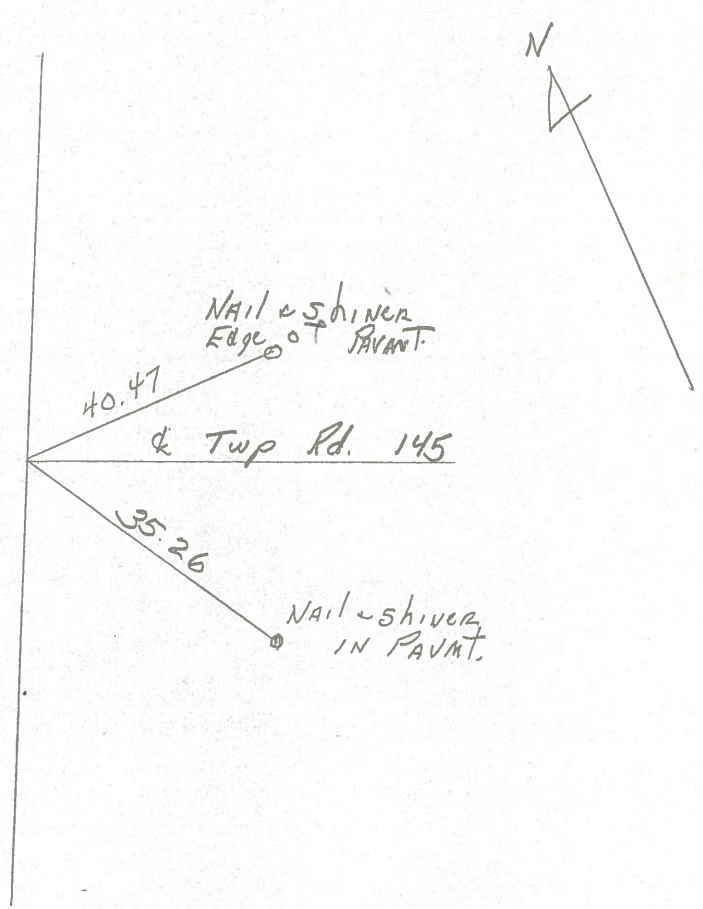
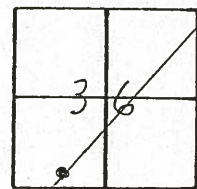
TOWNSHIP Rice

SECTION 30

T5 N R 16 E

TYPE MONUMENT Set P.K. + Washer
ON SURFACE - BELOW R/R spike 5" down
LEFT - ☉ PAV'T. - RIGHT ☉
TO EDGE PAVEMENT
S.L.M.

36B



County Sandusky S.R. # 53

Township Rice

Section 30

T5N, R16E

Personnel Cronin

Ripple

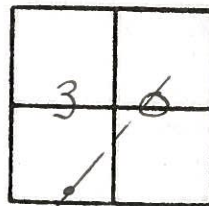
Barbour

Date 11/18/83

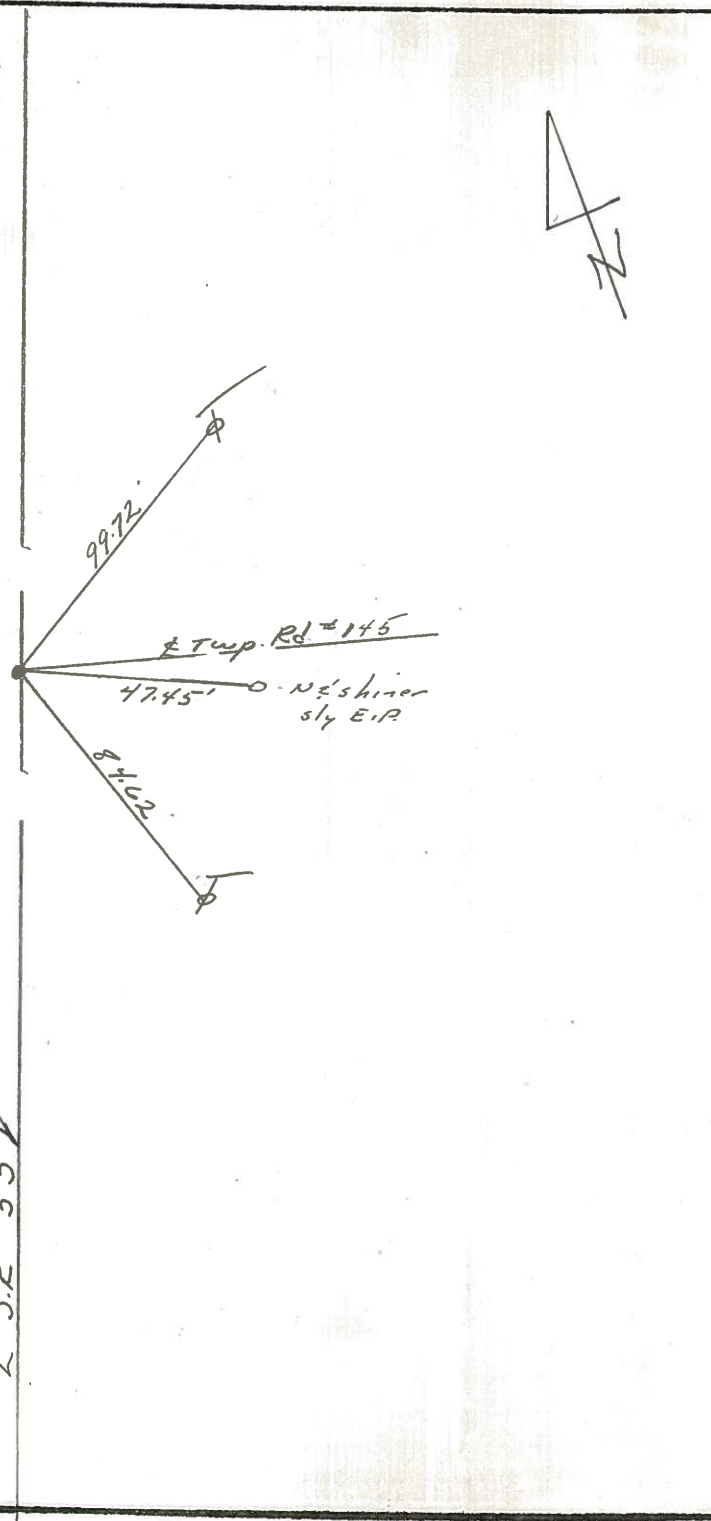
Weather overcast

Temp. 48°

36B



set P.K. & washer
at top P.K. (Fd.)



E. S.R. #53