

O.D.O.T. DISTRICT 2 SURVEY OFFICE (USE ONLY)

PERSONNEL _____ REFERENCE NO. 37 SHEET 16 OF 19
 NOTES RHOADES DATE 11/28/23 ROUTE SR 53
 H.C. AUBLE WEATHER SUNNY COUNTY SANDUSKY
 R.C. NIESE TEMP. 22° TOWNSHIP RICE
 ASTON SECTION 30
 DWG BY RHOADES PID 95760 T 5 N R 16 E

TYPE MONUMENT MAG/WASHER

ON SURFACE - ~~BELOW~~ ON _____

OFFSET \odot PAVEMENT 0.5' ~~ET~~ : RT

11.3' TO RT EDGE PAVEMENT

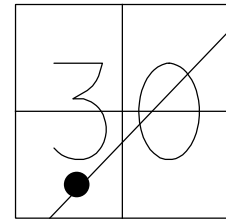
STATION: 888+28

HORIZ.DATUM: NAD83 2011

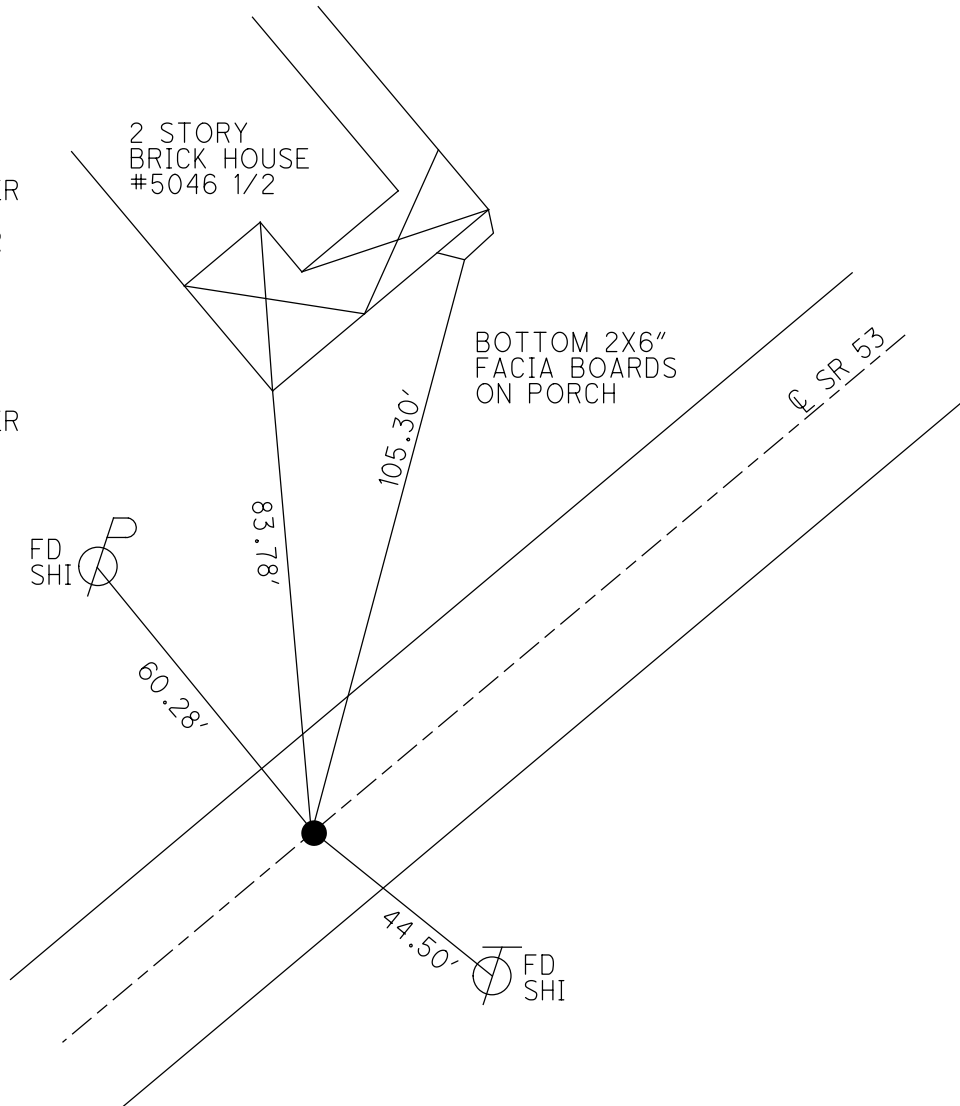
GEOID: NAVD88 2018

GRID: NORTHING: 647976.898

EASTING: 1814564.943



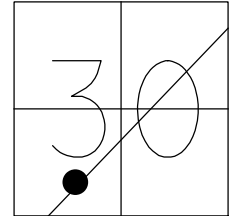
RECORD: P.I.
 $\Delta = 00^{\circ}02$ RT
 STA. 762+63.75
 FD P.K.NAIL
 3/20/03, MDB
 SET MAG/WASHER
 8/19/03, MDB
 FD MAG/WASHER
 REF37
 5/27/21, TDN
 4/7/22, JFO
 FD RUSTY HOLE
 REF37
 8/8/23, DSA
 SET MAG/WASHER
 11/28/23, DSA



O.D.O.T. DISTRICT 2 SURVEY OFFICE (USE ONLY)

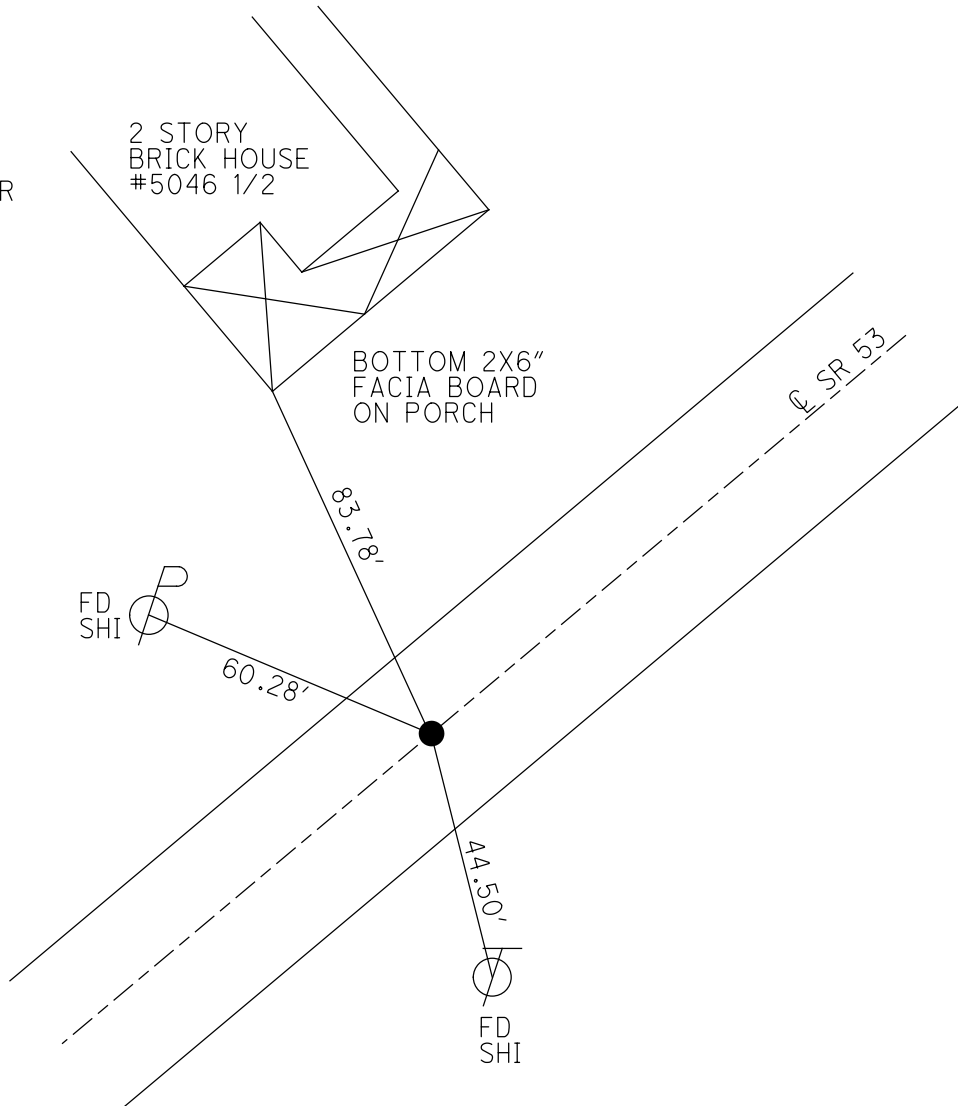
PERSONNEL _____ REFERENCE NO. 37 SHEET 16 OF 19
 NOTES RHOADES DATE 5/27/21 ROUTE SR 53
 H.C. NIESE WEATHER CLOUDY COUNTY SANDUSKY
 R.C. RHOADES TEMP. 56° TOWNSHIP RICE
 DWG BY RHOADES PID PVTRAIN SECTION 30
 T 5 N R 16 E

TYPE MONUMENT MAG/WASHER
 ON SURFACE - ~~BELOW~~ ON
 OFFSET 0.5' ~~LF~~ : RT
11.3' TO RT EDGE PAVEMENT
 STATION: 888+28



HORZ.DATUM: NAD83 2011 GEOID: NAVD88 2018
 GRID: NORTHING: 647976.909 EASTING: 1814564.960

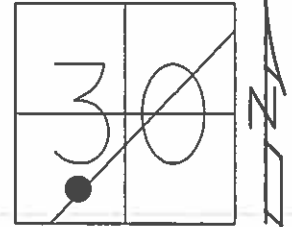
RECORD: P.I.
 $\Delta = 00^{\circ}02' RT$
 STA. 762+63.75
 FD P.K.NAIL
 3/20/03, MDB
 SET MAG/WASHER
 8/19/03, MDB
 FD MAG/WASHER
 REF37
 5/27/21, TDN
 4/7/22, JFO



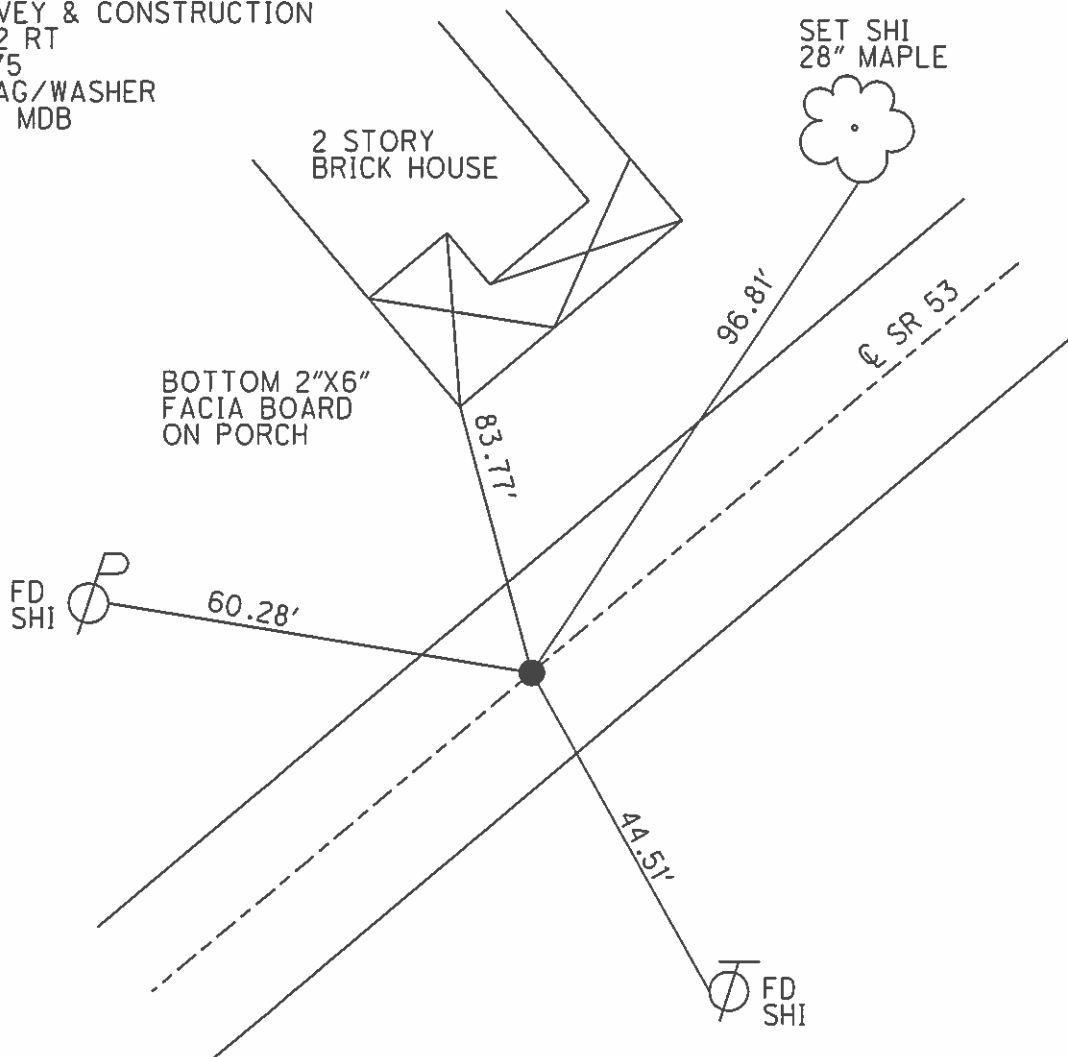
O.D.O.T. DISTRICT 2 SURVEY OFFICE (USE ONLY)

PERSONNEL	REFERENCE NO.	<u>37</u>	SHEET	<u>16</u>	OF	<u>19</u>
NOTES	HOMAN	DATE	<u>3/20/03</u>	ROUTE	<u>SR 53</u>	
H.C.	BARNHISEL	WEATHER	<u>SUNNY</u>	COUNTY	<u>SANDUSKY</u>	
R.C.	GLASS	TEMP.	<u>65°</u>	TOWNSHIP	<u>RICE</u>	
	RYALL			SECTION	<u>30</u>	
				T	<u>5</u>	N R
					<u>16</u>	E

TYPE MONUMENT P.K. NAIL
 ON SURFACE - ~~BELOW~~ ON
~~LEFT~~ - \odot PAV'T - RIGHT 0.6'
11.3' TO RT EDGE PAVEMENT
 S.L.M. 888+28
 Grid: Northing: _____ Easting: _____



RECORD:
 P.I. SURVEY & CONSTRUCTION
 $\Delta = 00^{\circ}02' RT$
 762+63.75
 RESET MAG/WASHER
 8/19/03, MDB



O.D.O.T. DISTRICT 2 SURVEY OFFICE

PERSONNEL

REFERENCE NO. 37

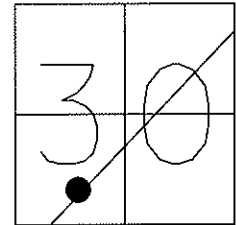
SHEET 15 OF 18

NOTES HOMAN
 H.C. BARNHIS
 R.C. GLASS
RYALL

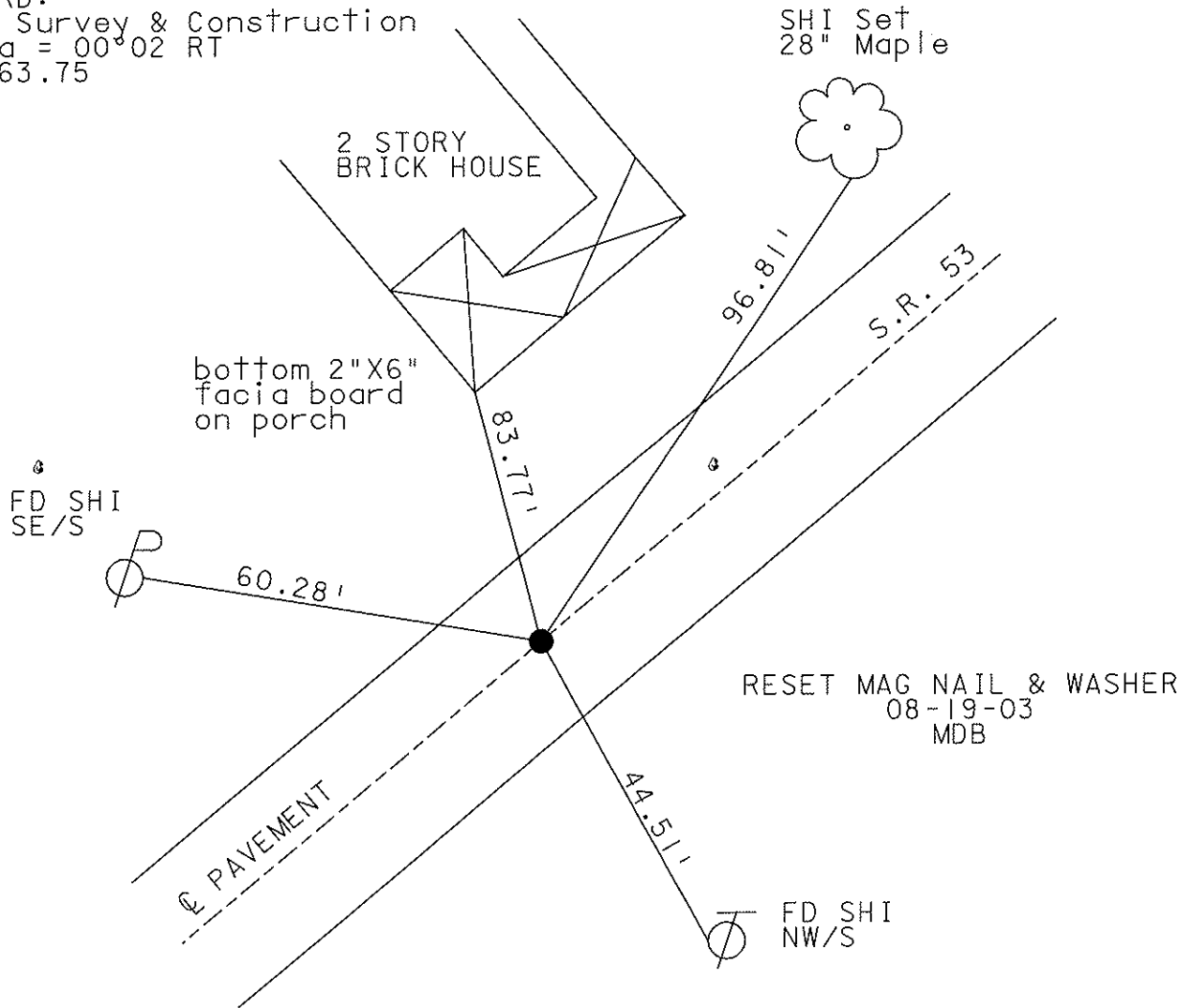
DATE 3-20-03
 WEATHER SUNNY
 TEMP. 65°

ROUTE S.R. 53
 COUNTY SANDUSKY
 TOWNSHIP RICE
 SECTION 30
T 5 N R 16 E

TYPE MONUMENT PK NAIL
~~ON SURFACE~~ - BELOW RR Spk .5'
~~LEFT - Q~~ PAV'T - RIGHT 0.6'
11.3' TO RT EDGE PAVEMENT
 S.L.M. 888+28



RECORD:
 P.I. Survey & Construction
 Delta = 00°02 RT
 762+63.75



O.D.O.T. DISTRICT 2 SURVEY OFFICE

PERSONNEL _____

REFERENCE NO. _____

SHEET 12 OF 15

NOTES Ripple

H.C. BARKOUR

R.C. GYMAN

DATE 8-30-90

WEATHER SUNNY

TEMP. 84°

ROUTE 53

COUNTY SAND.

TOWNSHIP Rice

SECTION 30

T 5 N R 16 E

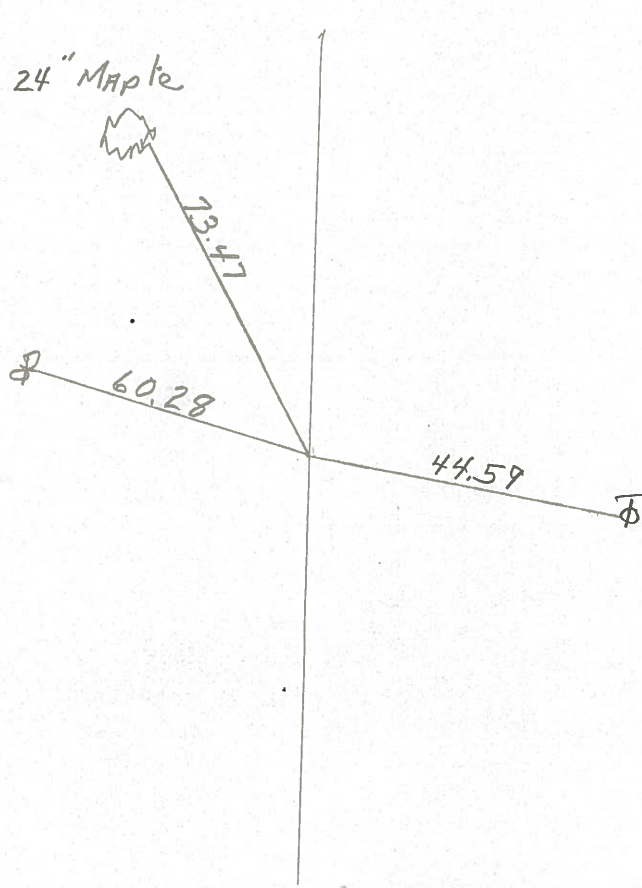
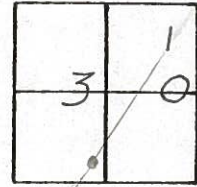
TYPE MONUMENT Set P.K. + Washer
 ON SURFACE - BELOW R/R Spike 5" down

LEFT- ϕ PAV'T. - RIGHT ϕ

TO _____ EDGE PAVEMENT

S.L.M. _____

37



P.I. Sur. + Const.
 $\Delta = 00^{\circ} 02' RT.$
762 + 63.75

County Sandusky S.R. #53

Township Rice

Section 30

T5N, R16E

Personnel Cronin

Ripple

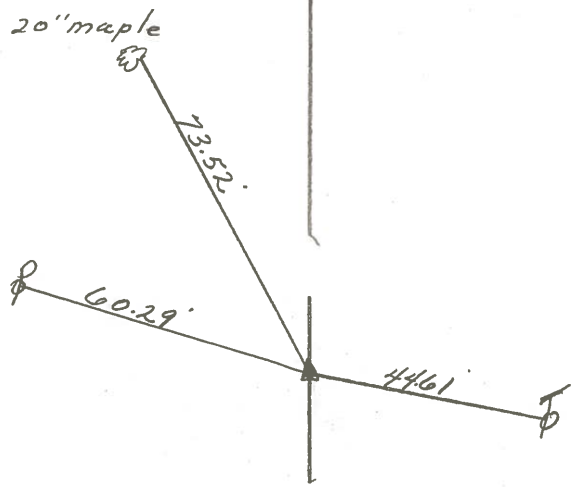
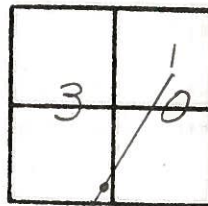
Barbour

Date 11/18/83

Weather overcast

Temp. 48°

(37)



P.I. Sur. & Const.
Δ = 00°02' Rt.
762+63.75
Set P.K. & washer atop
R.R. spk. (Fd.)

S.R. #53