

O.D.O.T. DISTRICT 2 SURVEY OFFICE (USE ONLY)

PERSONNEL

REFERENCE NO. 38

SHEET 17 OF 19

NOTES RHOADES

DATE 11/28/23

ROUTE SR 53

H.C. AUBLE

WEATHER SUNNY

COUNTY SANDUSKY

R.C. NIESE

TEMP. 22°

TOWNSHIP RICE

ASTON

SECTION 30

DWG BY RHOADES

PID 95760

T 5 N R 16 E

TYPE MONUMENT MAG/WASHER

ON SURFACE - ~~BELOW~~ ON

OFFSET 7.2' C PAVEMENT 5.0' E : RT

7.2' TO RT EDGE PAVEMENT

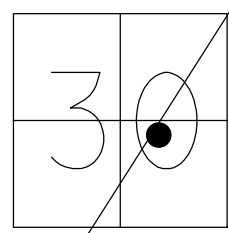
STATION: 906+72

HORIZ.DATUM: NAD83 2011

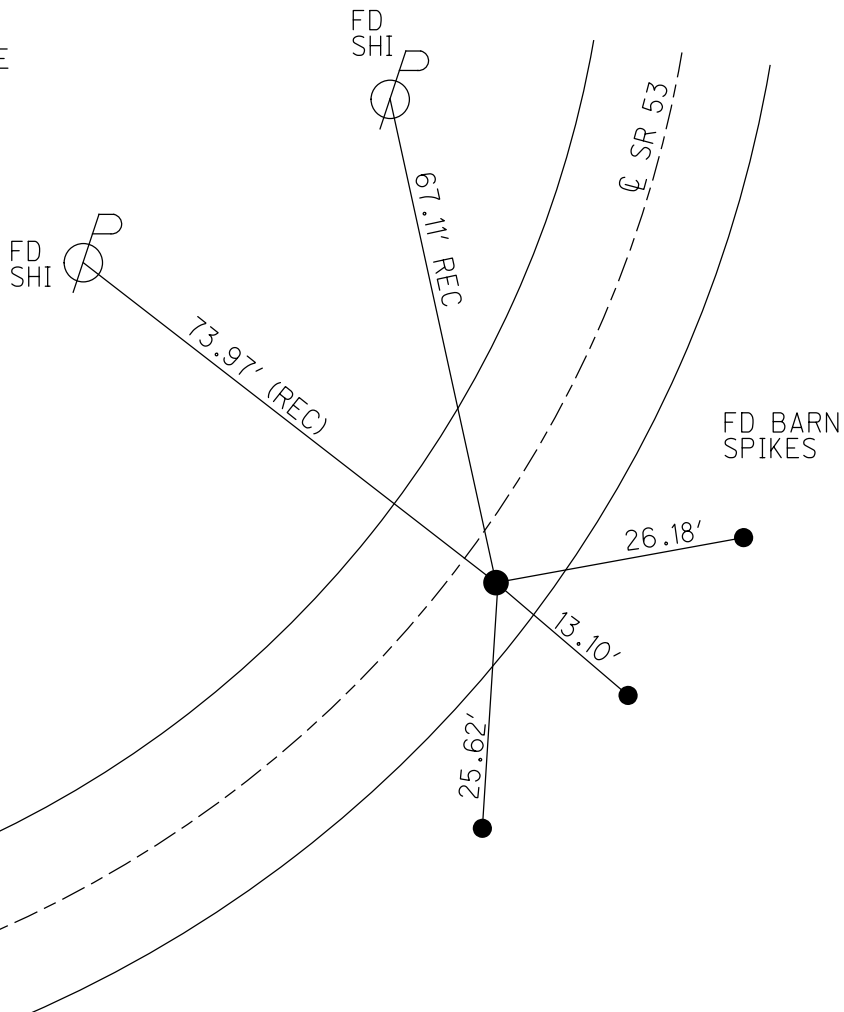
GEOID: NAVD88 2018

GRID: NORTHING: 649366.211

EASTING: 1815750.085



RECORD:
 PI. SURVEY CURVE
 TS. OF CONST. CURVE
 SET MAG/WASHER
 6/02/03, MDB
 FD MAG/WASHER
 REF38
 8/8/23, DSA
 SET MAG/WASHER
 11/28/23, DSA



O.D.O.T. DISTRICT 2 SURVEY OFFICE (USE ONLY)

PERSONNEL _____

REFERENCE NO. 38

SHEET 17 OF 19

NOTES RHOADES

DATE 5/27/21

ROUTE SR 53

H.C. NIESE

WEATHER CLOUDY

COUNTY SANDUSKY

R.C. RHOADES

TEMP. 56°

TOWNSHIP RICE

SECTION 30

DWG BY RHOADES

PID PVTRAIN

T 5 N R 16 E

TYPE MONUMENT MAG/WASHER

ON SURFACE - ~~BELOW~~ ON

OFFSET ϕ PAVEMENT 5.0' ~~LT~~ : RT

7.2' TO RT EDGE PAVEMENT

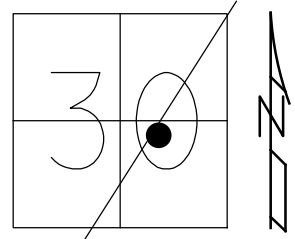
STATION: 906+72

HORZ.DATUM: NAD83 2011

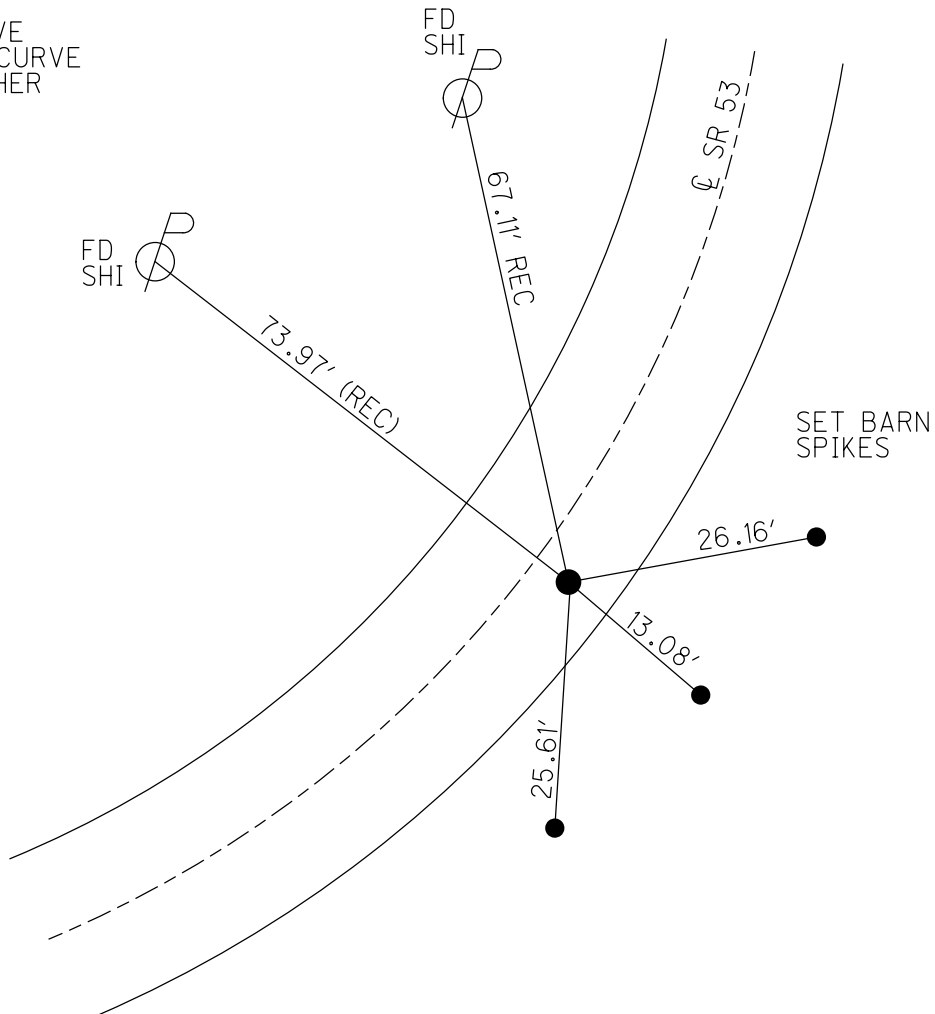
GEOID: NAVD88 2018

GRID: NORTHING: 649366.217

EASTING: 1815750.094



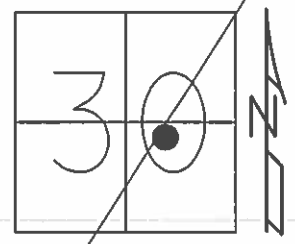
RECORD:
PI. SURVEY CURVE
TS. OF CONST. CURVE
RESET MAG/WASHER
6/02/03, MDB



O.D.O.T. DISTRICT 2 SURVEY OFFICE (USE ONLY)

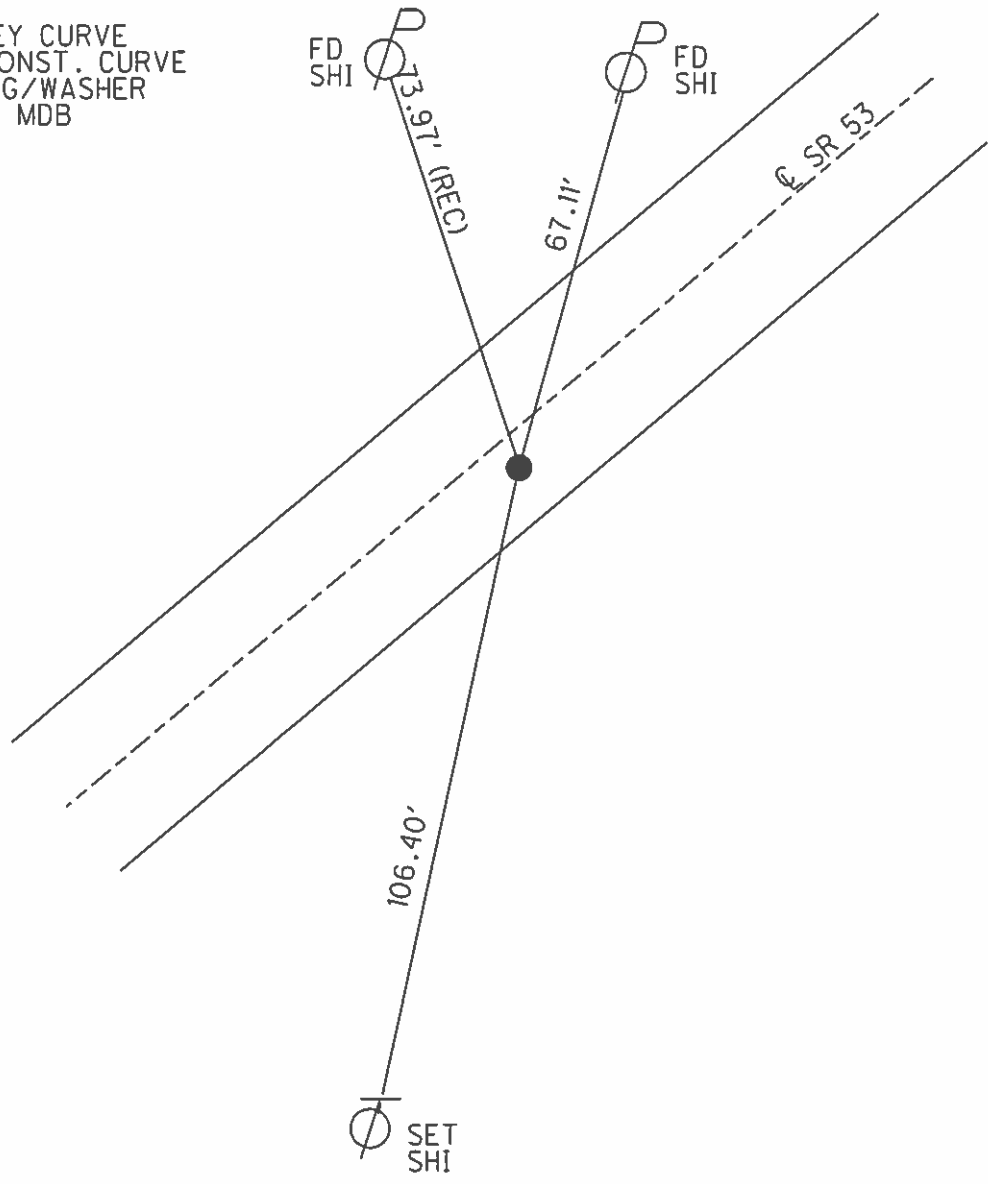
PERSONNEL	REFERENCE NO.	<u>38</u>	SHEET	<u>17</u>	OF	<u>19</u>
NOTES	<u>HOMAN</u>	DATE	<u>3/27/03</u>	ROUTE	<u>SR 53</u>	
H.C.	<u>BARNHISEL</u>	WEATHER	<u>CLOUDY</u>	COUNTY	<u>SANDUSKY</u>	
R.C.	<u>RYALL</u>	TEMP.	<u>50°</u>	TOWNSHIP	<u>RICE</u>	
	<u>GLASS</u>			SECTION	<u>30</u>	
				<u>T 5 N</u>	<u>R 16 E</u>	

TYPE MONUMENT P.K. NAIL/WASHER
 ON SURFACE - ~~BELOW~~ ON
~~LEFT~~ - CL PAV'T - RIGHT 5.0'
7.2' TO RT EDGE PAVEMENT
 S.L.M. 906+72



Grid: Northing: - Easting: -

RECORD:
 PI. SURVEY CURVE
 TS. OF CONST. CURVE
 RESET MAG/WASHER
 6/02/03, MDB



O.D.O.T. DISTRICT 2 SURVEY OFFICE

PERSONNEL

REFERENCE NO. 38

SHEET 16 OF 18

NOTES HOMAN

DATE 3-27-03

ROUTE S.R. 53

H.C. BARNHISEL

WEATHER CLOUDY

COUNTY SANDUSKY

R.C. RYALL

TEMP. 50°

TOWNSHIP RICE

GLASS

SECTION 30

T5 N R16 E

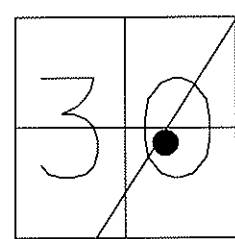
TYPE MONUMENT PK NAIL & WASHER

ON SURFACE - ~~BELOW~~ YES

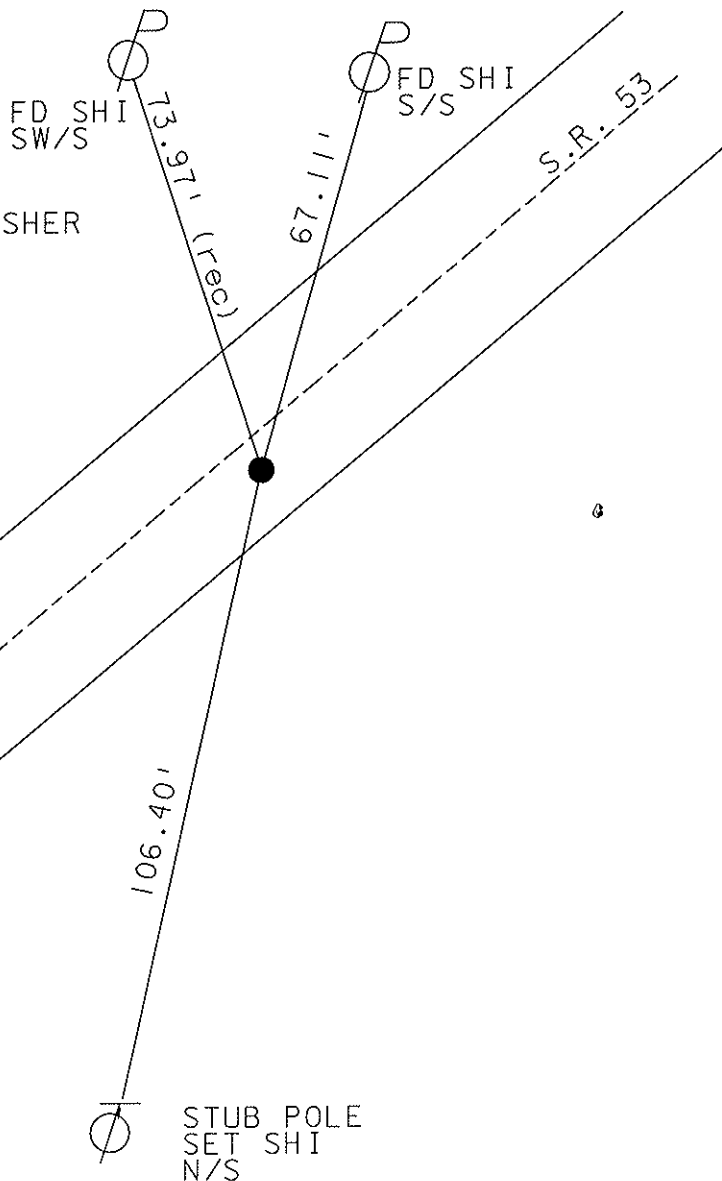
~~LEFT~~ - Q PAV'T - RIGHT 5.0'

7.2' TO RT EDGE PAVEMENT

S.L.M. 906+72



RECORD:
PI. SURVEY CURVE
TS. OF CONST. CURVE



RESET MAG NAIL & WASHER
06-02-03
MDB

STUB POLE
SET SHI
N/S

O.D.O.T. DISTRICT 2 SURVEY OFFICE

PERSONNEL _____

REFERENCE NO. _____

SHEET 13 OF 15

NOTES Ripple

H.C. Barbour

R.C. Geyman

DATE 8-30-90

WEATHER SUNNY

TEMP. 84°

ROUTE 53

COUNTY SAND.

TOWNSHIP Rice

SECTION 30

T. _____ R. 16 E

TYPE MONUMENT _____

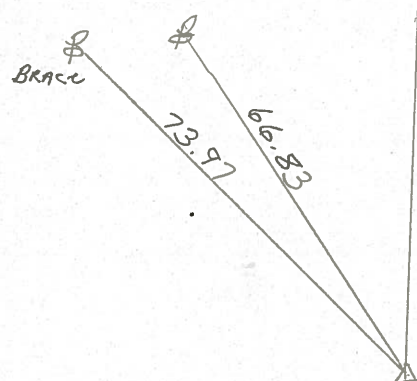
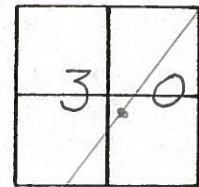
ON SURFACE - BELOW P.K. + WASHER 3' down

LEFT-☉ PAV'T. - RIGHT 3' RT. & PAVMT.

_____ TO _____ EDGE PAVEMENT

S.L.M. _____

(38)



P.I. SUR CURVE

T.S. OF CONST CURVE

County Sandusky S.R. # 53

Township Rice

Section 30

T5N, R16E

Personnel Cronin

Ripple

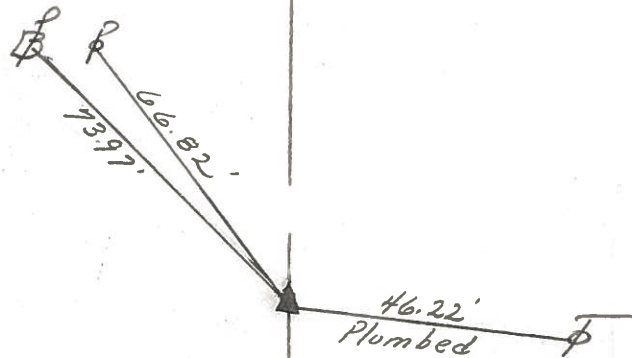
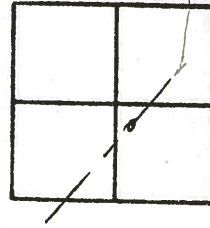
Barbour

Date 11/18/83

Weather overcast

Temp. 48°

38



P.I. Sur. Curve
T.S. of Const. Curve
Set P.K. & washer atop
P.K. 3' Rt. & Permit

S.R. # 53