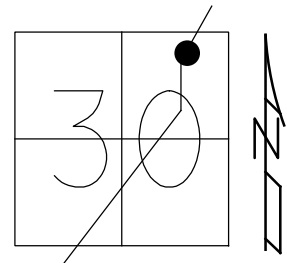


O.D.O.T. DISTRICT 2 SURVEY OFFICE (USE ONLY)

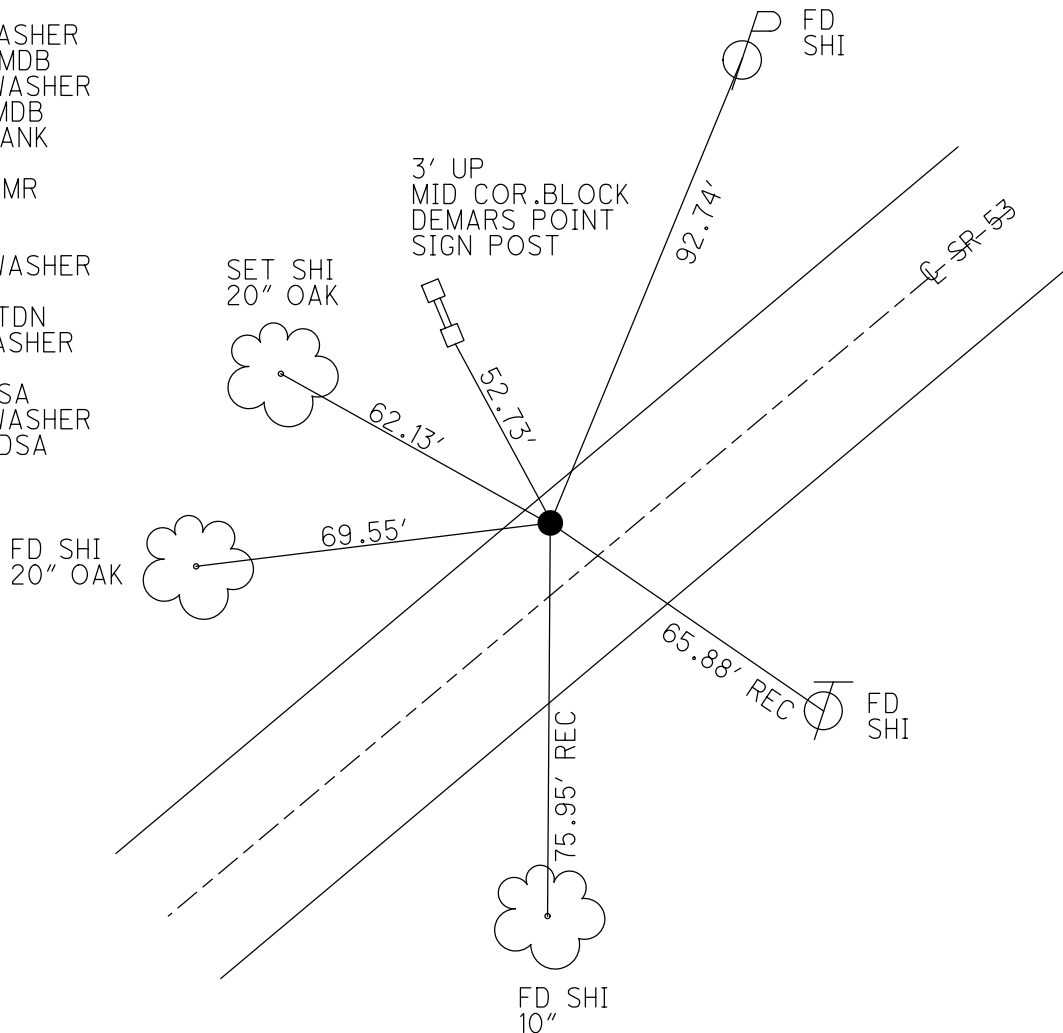
PERSONNEL _____ REFERENCE NO. 39 SHEET 18 OF 19
 NOTES RHOADES DATE 11/28/23 ROUTE SR 53
 H.C. AUBLE WEATHER SUNNY COUNTY SANDUSKY
 R.C. NIESE TEMP. 22° TOWNSHIP RICE
 ASTON SECTION 30
 DWG BY RHOADES PID 95760 T 5 N R 16 E

TYPE MONUMENT MAG/WASHER
 ON SURFACE - ~~BELOW~~ ON
 OFFSET Q PAVEMENT 9.5' LT : ~~RT~~
2.7' TO LT EDGE PAVEMENT
 STATION: 928+78



HORZ.DATUM: NAD83 2011 GEOID: NAVD88 2018
 GRID: NORTHING: 651407.266 EASTING: 1816543.519

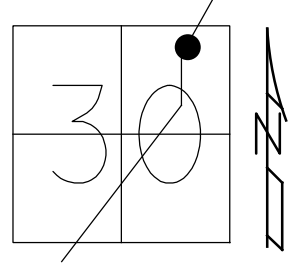
RECORD:
 FD P.K./WASHER
 3/27/03, MDB
 SET MAG/WASHER
 8/19/03, MDB
 FD MAG SHANK
 REF39
 5/27/21, JMR
 D.N.F
 4/7/22
 SET MAG/WASHER
 NEWREF39
 7/22/22, TDN
 FD MAG/WASHER
 REF39
 8/8/23, DSA
 SET MAG/WASHER
 11/28/23, DSA



O.D.O.T. DISTRICT 2 SURVEY OFFICE (USE ONLY)

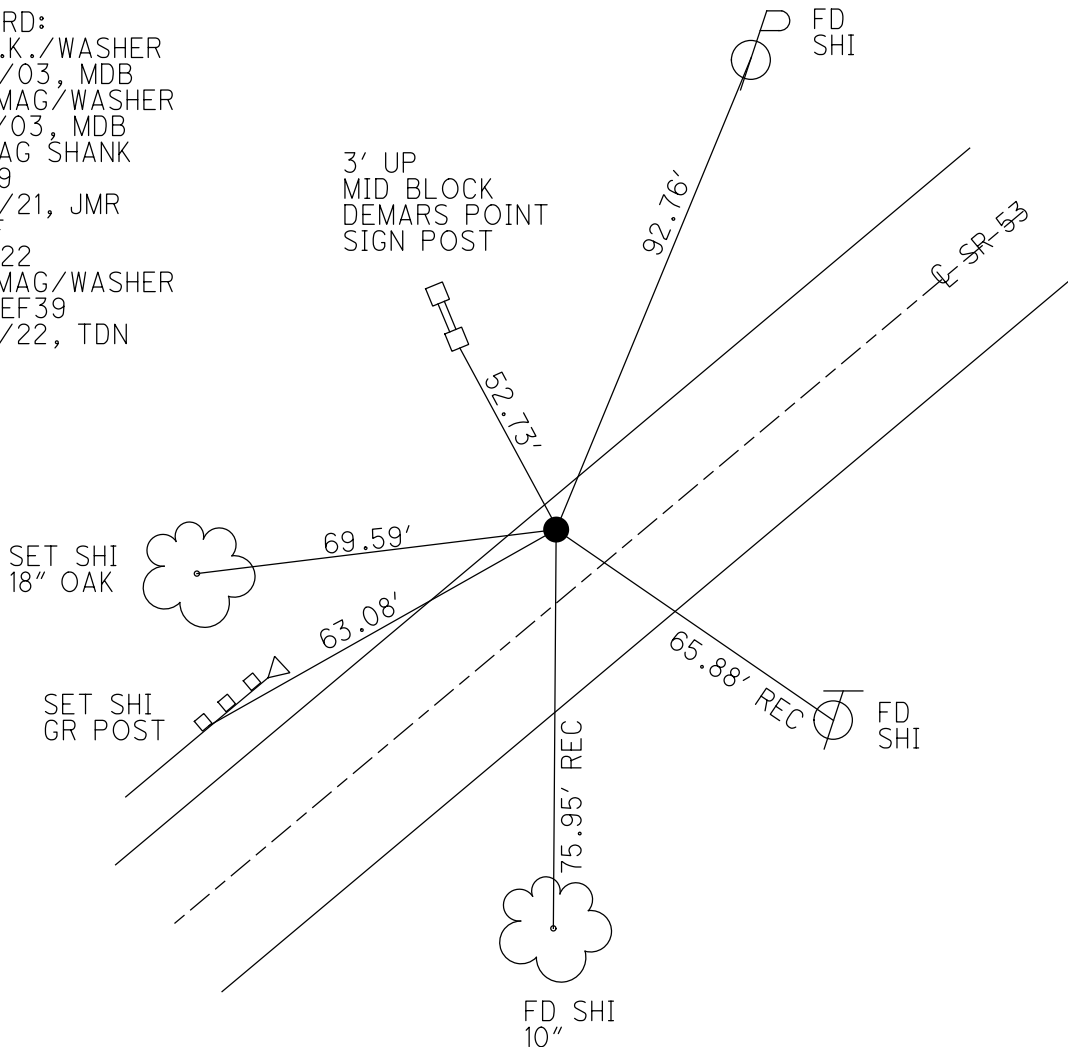
PERSONNEL	REFERENCE NO. <u>39</u>	SHEET <u>18</u> OF <u>19</u>
NOTES <u>RHOADES</u>	DATE <u>5/27/21</u>	ROUTE <u>SR 53</u>
H.C. <u>NIESE</u>	WEATHER <u>CLOUDY</u>	COUNTY <u>SANDUSKY</u>
R.C. <u>RHOADES</u>	TEMP. <u>56°</u>	TOWNSHIP <u>RICE</u>
		SECTION <u>30</u>
DWG BY <u>WHITAKER</u>	PID <u>PVTRAIN</u>	T <u>5</u> N R <u>16</u> E

TYPE MONUMENT MAG SHANK
 ON SURFACE - ~~BELOW~~ ON
 OFFSET \odot PAVEMENT 9.5' LT : ~~RT~~
2.7' TO LT EDGE PAVEMENT
 STATION: 928+78



HORZ. DATUM: NAD83 2011 GEOID: NAVD88 2018
 GRID: NORTHING: 651407.276 EASTING: 1816543.530

RECORD:
 FD P.K./WASHER
 3/27/03, MDB
 SET MAG/WASHER
 8/19/03, MDB
 FD MAG SHANK
 REF39
 5/27/21, JMR
 D.N.F
 4/7/22
 SET MAG/WASHER
 NEWREF39
 7/22/22, TDN



O.D.O.T. DISTRICT 2 SURVEY OFFICE (USE ONLY)

PERSONNEL

REFERENCE NO. 39

SHEET 18 OF 19

NOTES RHOADES

DATE 5/27/21

ROUTE SR 53

H.C. NIESE

WEATHER CLOUDY

COUNTY SANDUSKY

R.C. RHOADES

TEMP. 56°

TOWNSHIP RICE

SECTION 30

DWG BY RHOADES PID PVTRAIN

T 5 N R 16 E

TYPE MONUMENT MAG SHANK

ON SURFACE - ~~BELOW~~ ON

OFFSET Q PAVEMENT 9.5' LT : ~~RT~~

2.7' TO LT EDGE PAVEMENT

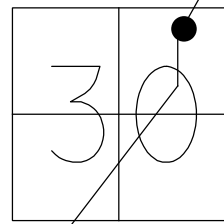
STATION: 928+78

HORIZ.DATUM: NAD83 2011

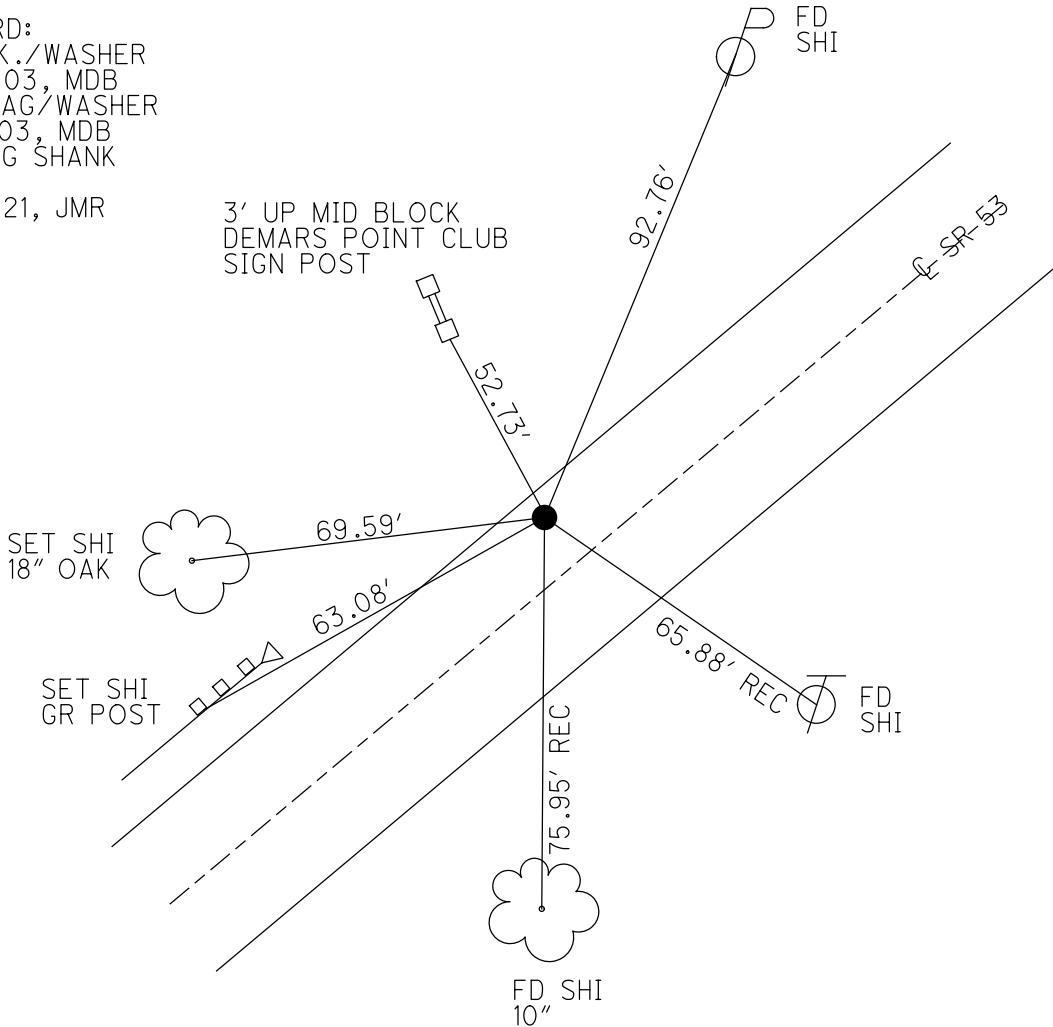
GEOID: NAVD88 2018

GRID: NORTHING: 651407.313

EASTING: 1816543.543



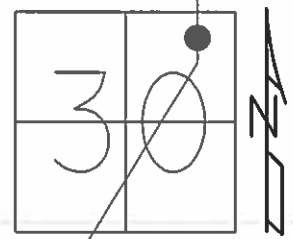
RECORD:
 FD P.K./WASHER
 3/27/03, MDB
 SET MAG/WASHER
 8/19/03, MDB
 FD MAG SHANK
 REF39
 5/27/21, JMR



O.D.O.T. DISTRICT 2 SURVEY OFFICE (USE ONLY)

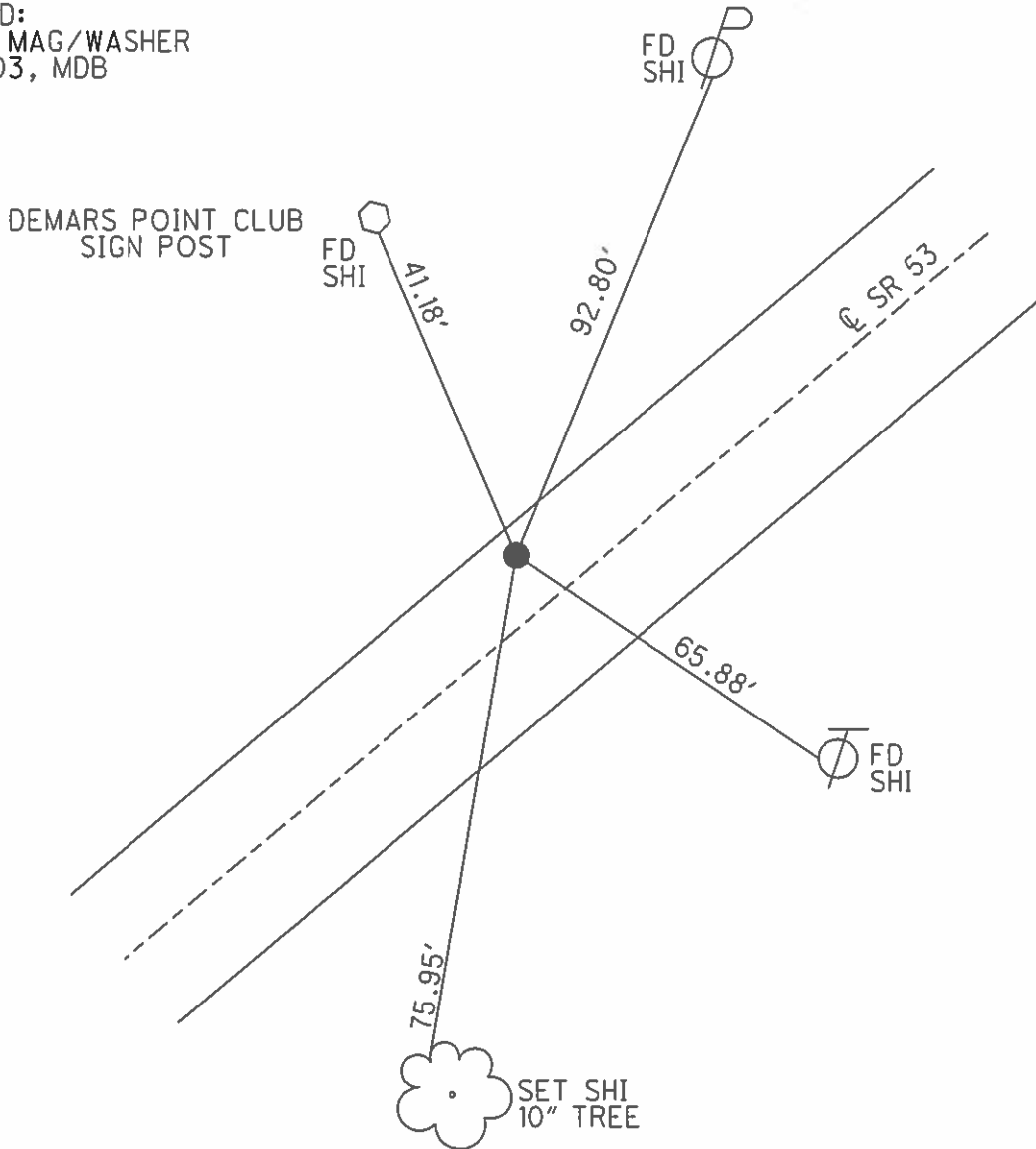
PERSONNEL	REFERENCE NO.	39	SHEET	18	OF	19
NOTES	HOMAN	DATE	3/27/03	ROUTE	SR 53	
H.C.	BARNHISEL	WEATHER	SUNNY	COUNTY	SANDUSKY	
R.C.	GLASS	TEMP.	50°	TOWNSHIP	RICE	
	RYALL			SECTION	30	
				T 5 N	R 16 E	

TYPE MONUMENT P.K. NAIL/WASHER
 ON SURFACE - ~~BELOW~~ ON
 LEFT - \odot PAV'T - ~~RIGHT~~ 9.5'
2.7' TO LT EDGE PAVEMENT
 S.L.M. 928+78



Grid: Northing: _____ Easting: _____

RECORD:
 RESET MAG/WASHER
 8/19/03, MDB



O.D.O.T. DISTRICT 2 SURVEY OFFICE

PERSONNEL

REFERENCE NO. 39

SHEET 17 OF 18

NOTES HOMAN

DATE 3-27-03

ROUTE S.R. 53

H.C. BARNHISEL

WEATHER SUNNY

COUNTY SANDUSKY

R.C. GLASS

TEMP. 50°

TOWNSHIP RICE

RYALL

SECTION 30

T 5 N R 16 E

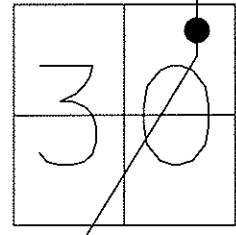
TYPE MONUMENT PK NAIL & WASHER

~~ON SURFACE~~ - BELOW headles PK .3'

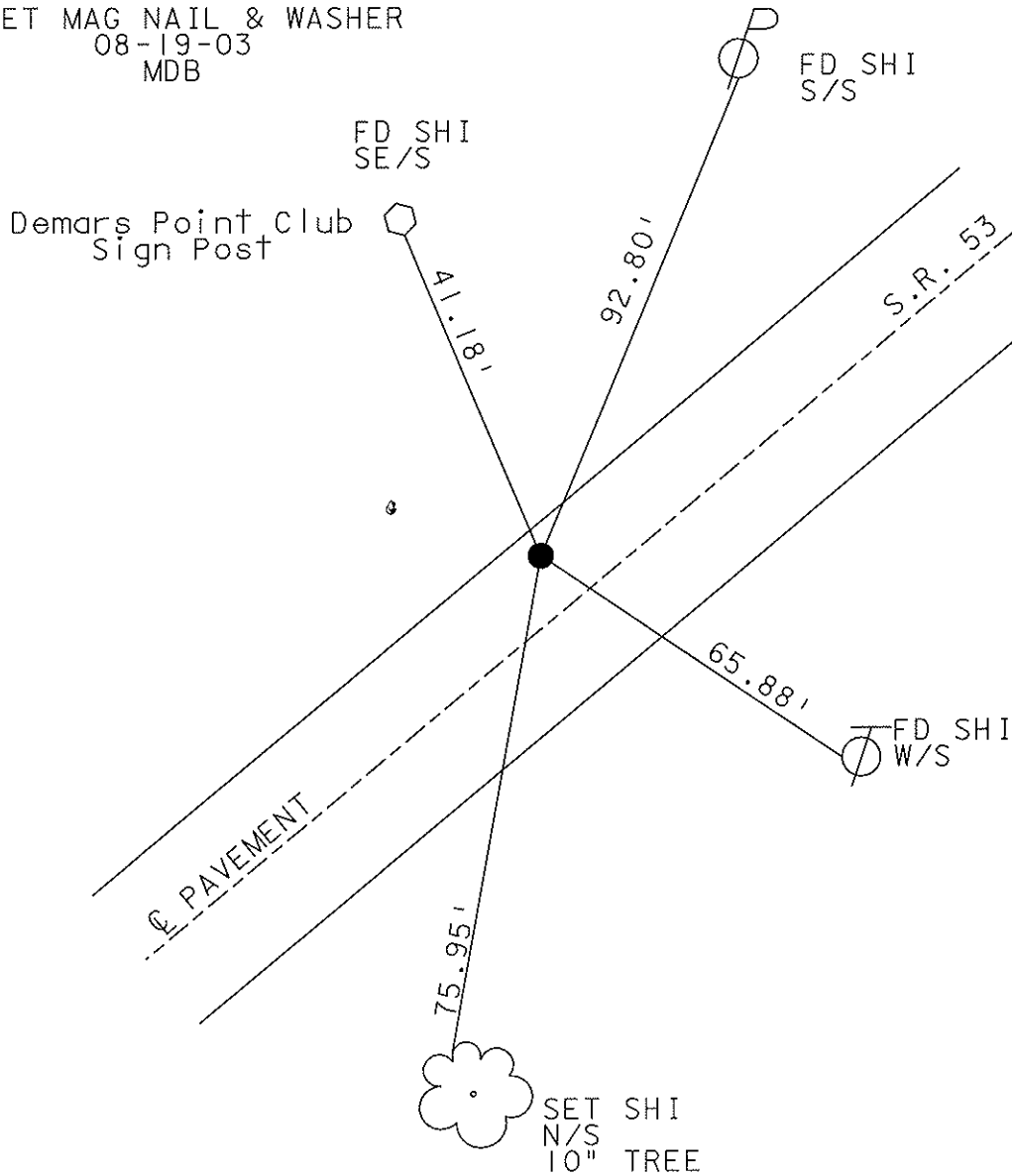
LEFT - ϕ PAV'T - ~~RIGHT~~ 9.5'

2.7' RT TO LT EDGE PAVEMENT

S.L.M. 928+78



RESET MAG NAIL & WASHER
08-19-03
MDB



O.D.O.T. DISTRICT 2 SURVEY OFFICE

PERSONNEL

REFERENCE NO. _____

SHEET 14 OF 1

NOTES Ripple

H.C. BARBOUR

DATE 8/30/90

ROUTE SR.# 53

R.C. Geyman

WEATHER SUNNY

COUNTY SANDUSKY

TEMP. 86°

TOWNSHIP Rice

SECTION 30

T5 N R 16 E

TYPE MONUMENT _____

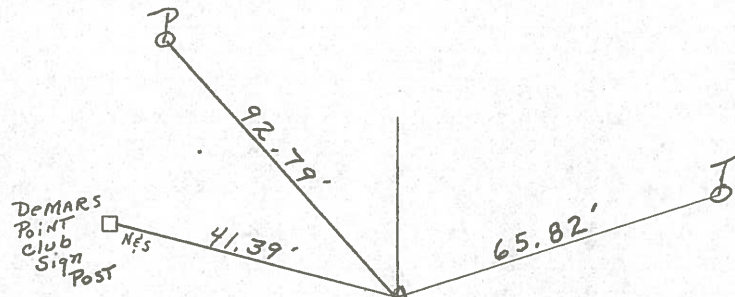
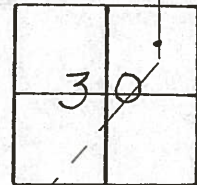
ON SURFACE - BELOW 4" down Headless P.K. Nail

LEFT- & PAV'T. - RIGHT 9.5' LT. & Pav'T.

TO _____ EDGE PAVEMENT

S.L.M. _____

(39)



SR # 537