

#5023

For any Questions Please Contact ODOT District 2 Real estate at 419-353-8131

FILE NO. 770 7

I.C.H. NO. 276, SEC. U  
Sandusky County

File #105

# STATE HIGHWAY DEPARTMENT OF OHIO

## BUREAU OF CONSTRUCTION

# SEC. U. SANDUSKY-CLYDE ROAD

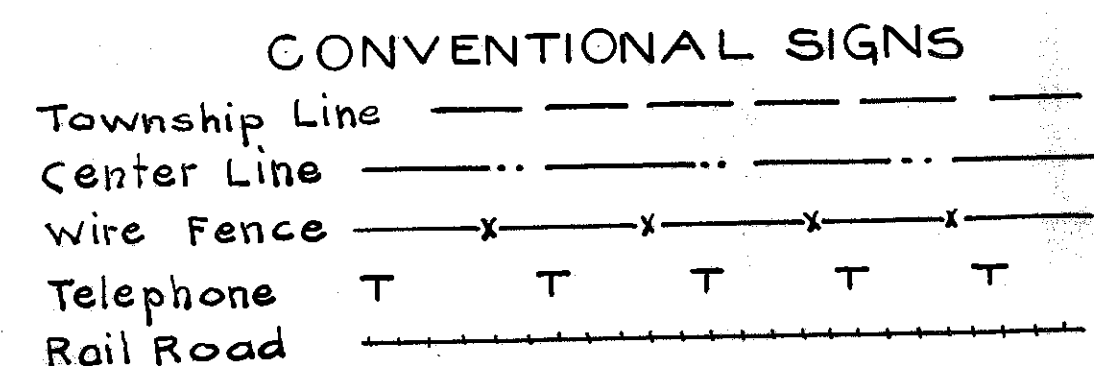
I.C.H. NO. 276 PET. NO. 3847

### SANDUSKY COUNTY

TO WNSEND TWP.

APRIL 1920

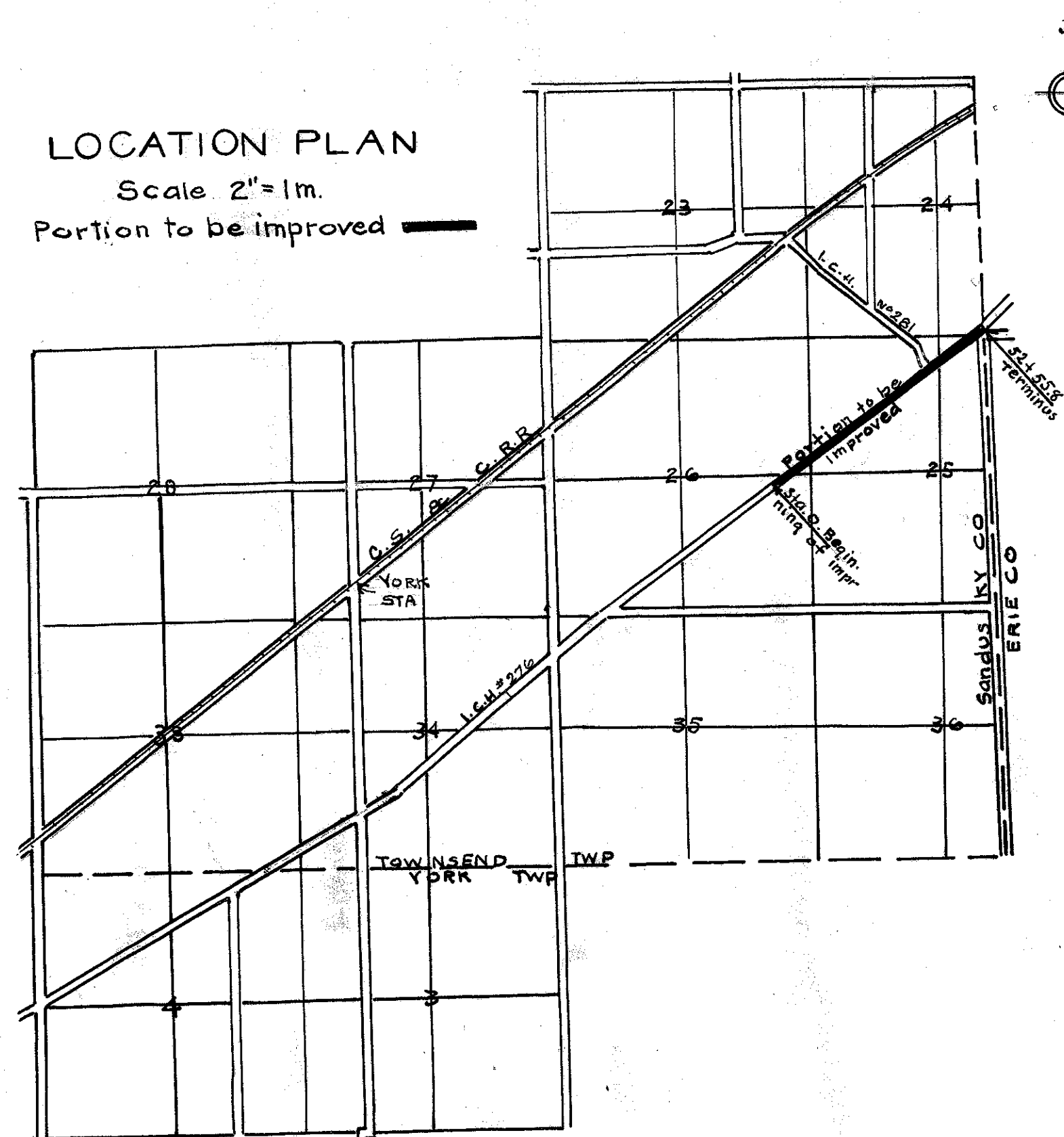
INDEX TO SHEETS	
Sheet No	Title Page
1	Title Page
2	Typical Cross Section of improvement
3	Plan and Profile Sta 0 to Sta. 31
4	" " " " 31 to 52+55.8
5	Cross Sections 0 to 52+55.8
6	Summary of Bridges and Culverts
7	Plans of Bridges and Culverts



SCALES

- Plan 1"=100'
- Profile (Vertical) 1"=10'
- Profile (Horizontal) 1"=100'
- Cross Sections 1"=5'

LOCATION PLAN  
Scale 2"=1m.  
Portion to be improved



I hereby approve these plans and declare that the making of this improvement will require the closing of the highway to traffic and detour will be indicated as shown on plan

Approved Edner Hidy  
Date 6/8/1920 Division Engineer

Approved J. D. Brindle  
Date 6/11/20 Chief Highway Engineer

Approved A. R. Taylor  
Date 6/22/1920 State Highway Commissioner

Approved L. H. Widman  
Date 5/22/1920 County Surveyor

We the Commissioners of Sandusky County hereby approve these plans and certify that the right of way is available for the construction of the above highway

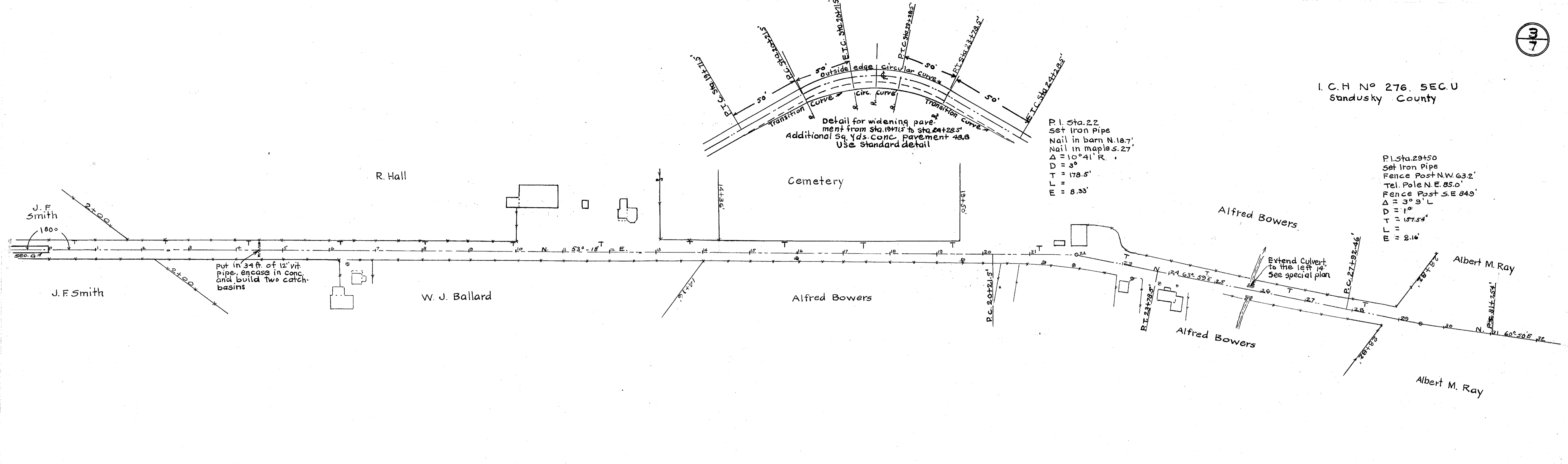
Signed J. L. Blanke  
J. L. Robinson  
R. G. Rogers

Date 5/22/1920 County Commissioners

CONSTRUCTION BUREAU  
JUL 13 1955  
GROUND PHOTOLAB



I. C. H. No 276. SEC. U  
Sandusky County



P.I. Sta. 22  
Set Iron Pipe  
Nail in barn N. 18.7'  
Δ = 10° 41' R.  
D = 3°  
T = 178.5'  
E = 8.33'

P.I. Sta. 29+50  
Set Iron Pipe  
Fence Post N.W. 63.2'  
Tel. Pole N.E. 85.0'  
Fence Post S.E. 84.9'  
Δ = 3° 3' L  
D = 1°  
T = 157.54'  
L =  
E = 2.16'

Station	Proposed Grade of Completed Roadway	Present Grade
0	678.01	678.02
1	677.70	677.62
2	678.06	677.56
3	678.30	677.46
4	678.60	677.26
5	678.90	677.46
6	679.20	679.16
7	679.50	679.92
8	679.80	679.82
9	680.10	680.42
10	680.30	680.22
11	680.50	680.12
12	680.70	680.12
13	680.90	680.16
14	681.10	680.26
15	681.30	680.86
16	681.50	681.36
17	681.70	680.96
18	681.90	680.96
19	682.10	681.82
20	682.30	681.62
21	682.32	681.62
22	682.47	680.42
23	682.05	679.72
24	681.87	679.02
25	681.66	677.22
26	681.40	676.51
27	680.36	676.91
28	679.20	677.71
29	678.65	677.41
30	678.40	677.21
31	678.18	676.99

put in 34 ft. of 12" vit. pipe, encase in conc. and build two catch basins

Exc. 488.5 cu yds  
Emb. 400.6 cu yds

Div Haul

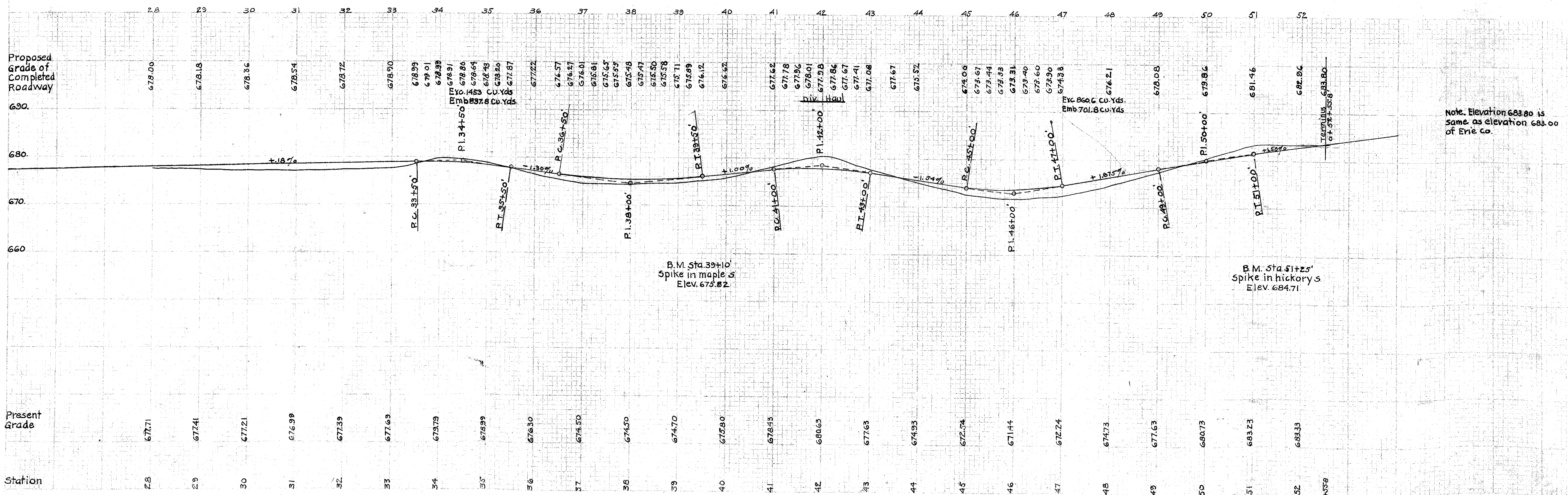
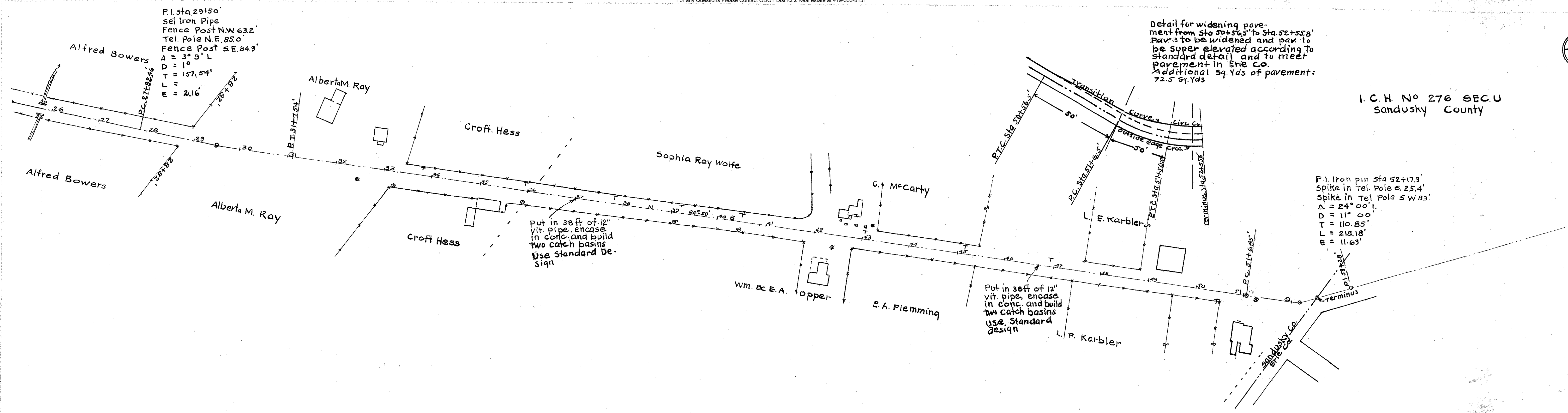
Exc. 1026.4 cu yds  
Emb. 856.0 cu yds

Div Haul

B.M. Sta. 6+10  
Spike in fence P.S.  
Elev. 680.52

B.M. Sta. 16+  
Top of base at ec.  
large Beebe monument  
north with ball on top  
Elev. 683.04

B.M. Sta. 25+  
Top S.W. S rail of Culv.  
Elev. 679.08



Note: Elevation 683.80 is same as elevation 683.00 of Erie Co.

Detail for widening pavement from Sta 50+56.5' to Sta. 52+55.8' Pav to be widened and pav to be super elevated according to standard detail and to meet pavement in Erie Co. Additional 39 Yds of pavement: 72.5 sq. Yds

P.I. Iron pin Sta 52+17.3' Spike in Tel. Pole S 25.4' Δ = 24° 00' L D = 11° 00' T = 110.85' L = 218.18' E = 11.63'

Put in 36" of 12" vit pipe, encase in conc. and build two catch basins Use Standard Design

Put in 36" of 12" vit pipe, encase in conc. and build two catch basins Use Standard Design