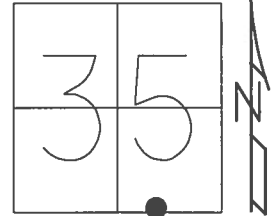


O.D.O.T. DISTRICT 2 SURVEY OFFICE (USE ONLY)

PERSONNEL _____ REFERENCE NO. 1 SHEET 1 OF 11
 NOTES RHOADES DATE 3/28/17 ROUTE SR 101
 H.C. O'DONNELL WEATHER CLOUDY COUNTY SANDUSKY
 R.C. HELDMAN TEMP. 43° TOWNSHIP GREEN CREEK
 SECTION 35
 T 4 N R 16 E

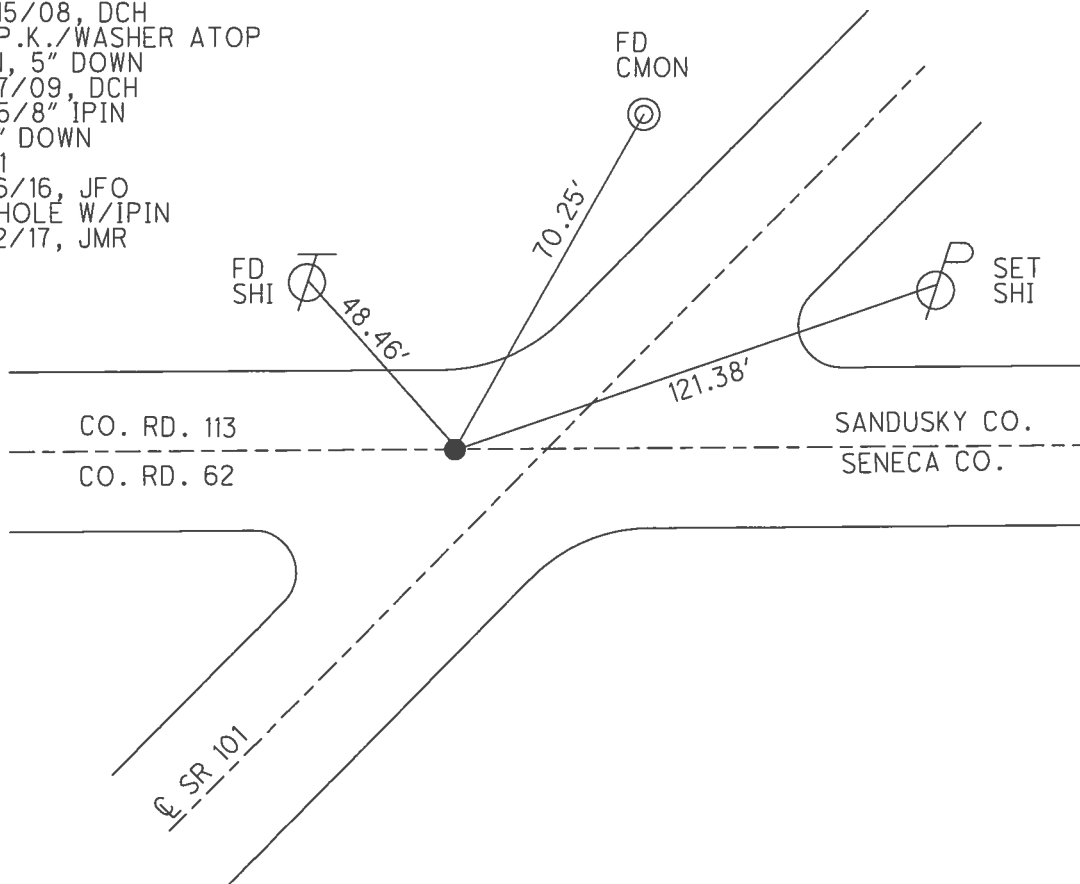
TYPE MONUMENT 5/8" IPIN
~~ON SURFACE~~ - BELOW 6.5"
 LEFT - ☉ PAV'T - ~~RIGHT~~ 10.5'
TO EDGE PAVEMENT
 S.L.M. 0+00



GRID: NORTHING: 579407.932 EASTING: 1836662.427

RECORD:
 P.I. STA. 0+00
 FD IPIN
 5" DOWN
 SET P.K./WASHER
 10/1/92
 SET MAG/WASHER
 10/15/08, DCH
 FD P.K./WASHER ATOP
 IPIN, 5" DOWN
 10/7/09, DCH
 FD 5/8" IPIN
 6.5" DOWN
 REF1
 6/16/16, JFO
 FD HOLE W/IPIN
 9/12/17, JMR

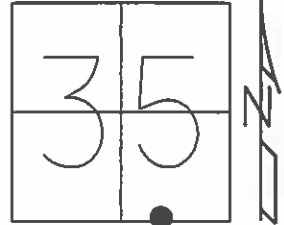
NOTE: REF 66 SEN CO.



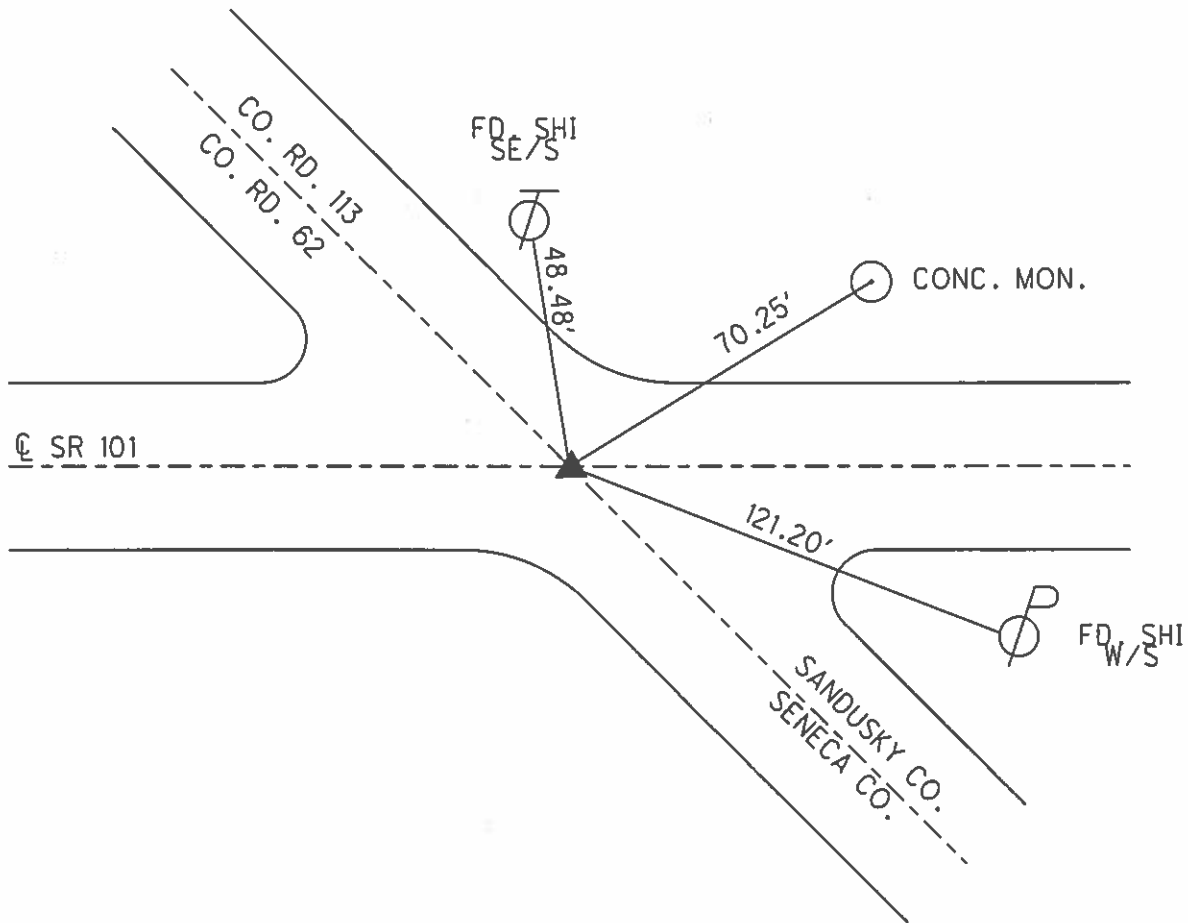
O.D.O.T. DISTRICT 2 SURVEY OFFICE (USE ONLY)

PERSONNEL _____ REFERENCE NO. 1 SHEET 1 OF 10
 NOTES HOMAN DATE 6-26-2008 ROUTE SR 101
 H.C. ROUSOS WEATHER CLOUDY COUNTY SANDUSKY
 R.C. HOMAN TEMP. 85° TOWNSHIP GREEN CREEK
 SECTION 35
 T 4 N R 16 E

TYPE MONUMENT MAG/WASHER
 ON SURFACE - ~~BELOW~~ ON
 LEFT - ☉ PAV'T - ~~RIGHT~~ 10.5'
- TO - EDGE PAVEMENT
 S.L.M. 0+00
 GRID: NORTHING: - EASTING: -



RECORD:
 P.I. STA. 0+00
 SET P.K./WASHER
 10/1/92
 SET MAG/WASHER
 10/15/08



O.D.O.T. DISTRICT 2 SURVEY OFFICE

PERSONNEL

REFERENCE NO. 1

SHEET 1 OF 10

NOTES Cheney

H.C. RIPPLE

R.C. BARBOUR

DATE 10-1-92

WEATHER SUNNY

TEMP. 70°

ROUTE SR#101

COUNTY SANDUSKY

TOWNSHIP Green Creek

SECTION #35

T4 NR 16 E

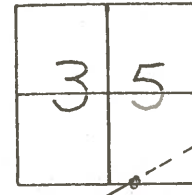
TYPE MONUMENT P.K. EWASHER

ON SURFACE - ~~BELOW~~ YES

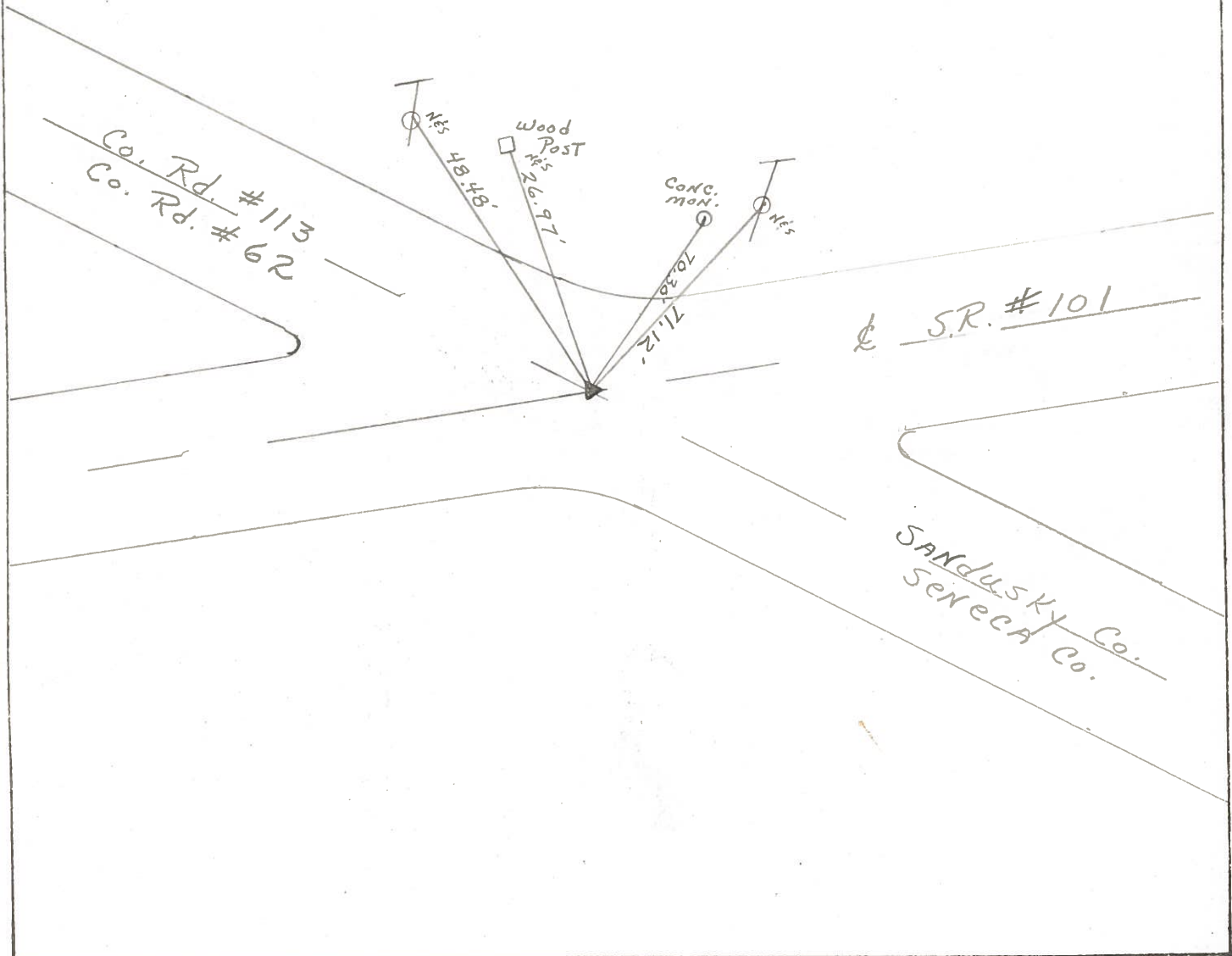
LEFT- & PAV'T. - ~~RIGHT~~ 10.5'

TO EDGE PAVEMENT

S.L.M. 0+00



Record: P.I. sta 0+00



County Sandusky S.R. # 101

Township Green Creek

Section # 35

T4N, R16E

Personnel Cronin

Ripple

Geyman

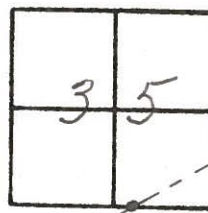
Barbour

#1

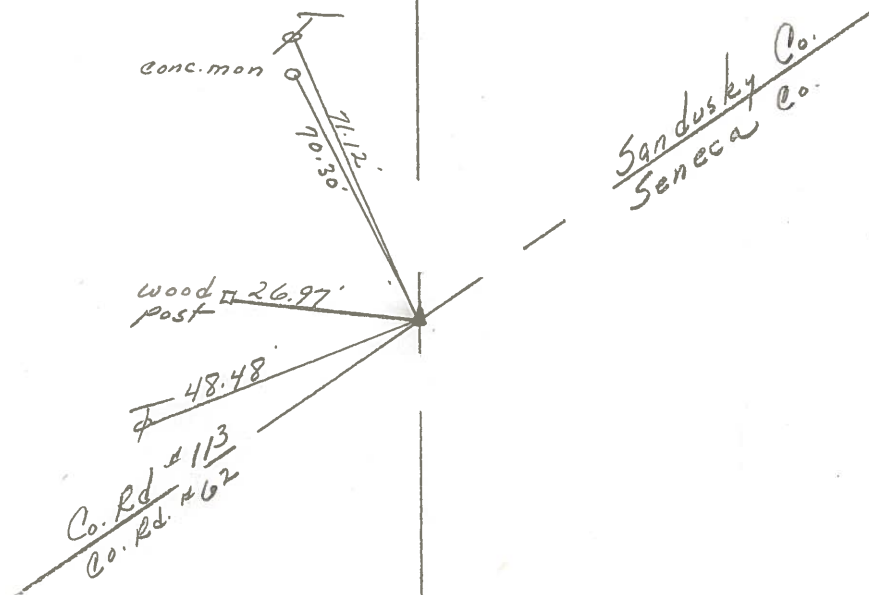
Date 11/17/83

Weather overcast

Temp. 34°



P.I.
0+00
Fd. P.K. & washer on
surface. 10.5 Lt & Paint



S.R. # 101

PERSONNEL TITLE PERSONNEL TITLE

Schneider
Mossler
Barbour
Potts

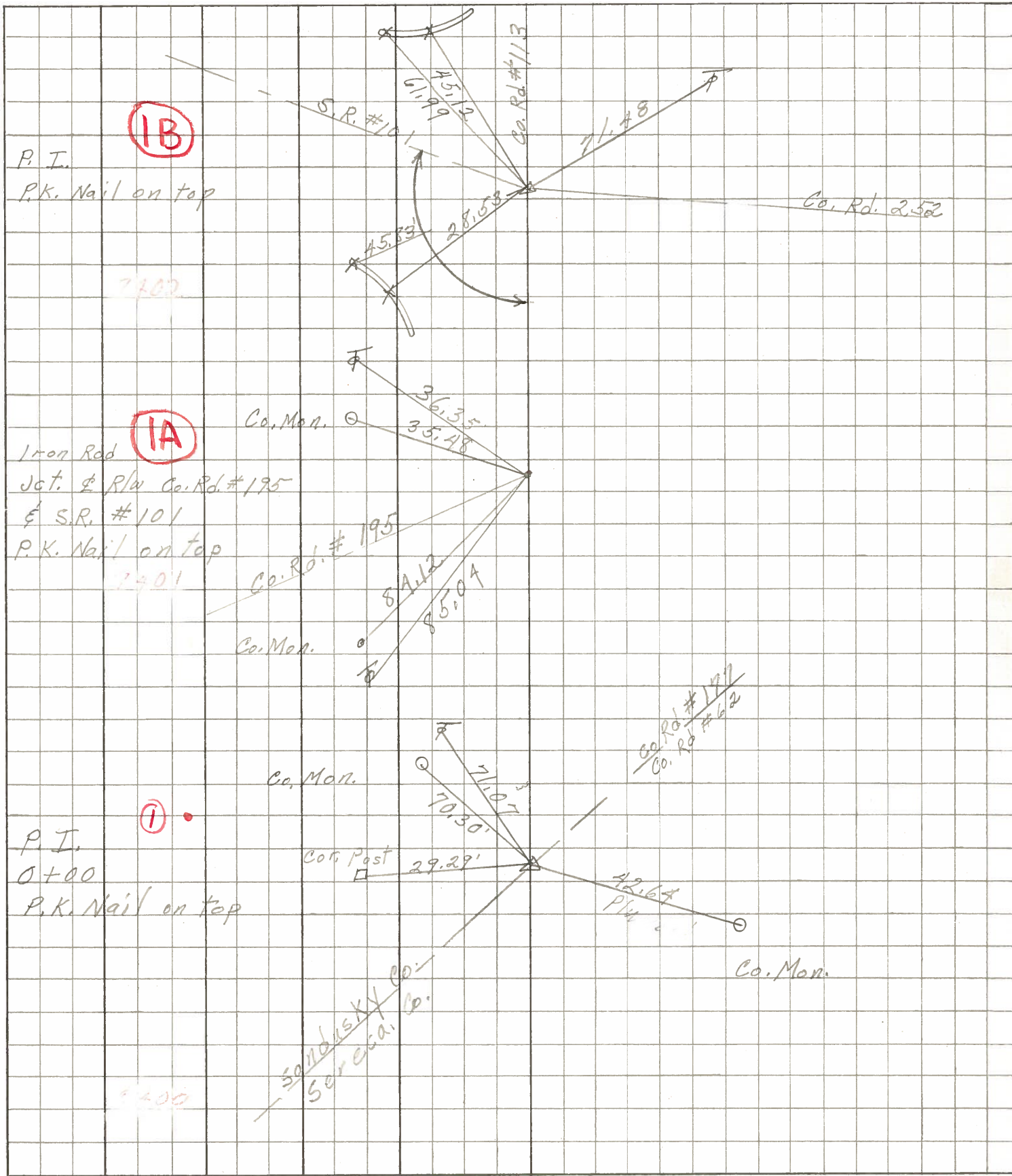
COUNTY Sandusky DATE Feb. 29, 1968

S. R. # 101 WEATHER Cloudy-snow

SEC. Sen-5 n .line North TEMP. 25'

DESCRIPTION Ties for Control P 3 JOB NO.

LEFT CENTER LINE RIGHT



IB

P.I.
P.K. Nail on top

IA

Iron Rod
Jct. of R/W Co. Rd. #195
& S.R. #101
P.K. Nail on top

①

P.I.
0+00
P.K. Nail on top

Sandusky Co.
Seneca Co.

PERSONNEL TITLE PERSONNEL TITLE

COUNTY Sandusky DATE 3-4-64

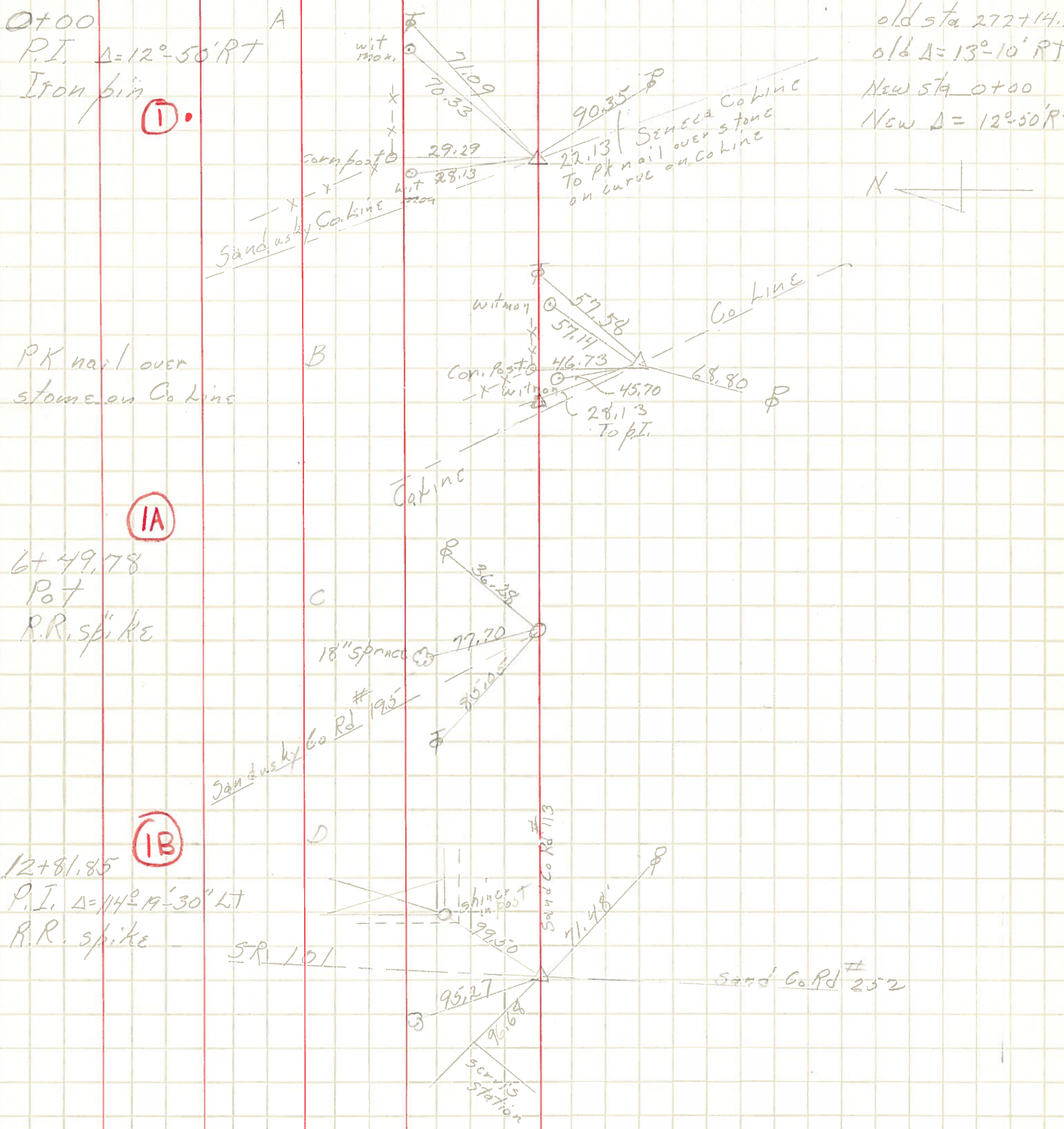
Krobill
Kowaleski
Bruggeman

S. R. 101 WEATHER

SEC. TEMP.

DESCRIPTION Seneca Co Line to N.P. & STL. RR JOB NO.

LEFT CENTER LINE RIGHT



(I)

(IA)

(IB)

old sta 272+14.
old $\Delta = 13^\circ - 10' RT$
New sta 0+00
New $\Delta = 12^\circ - 50' RT$

