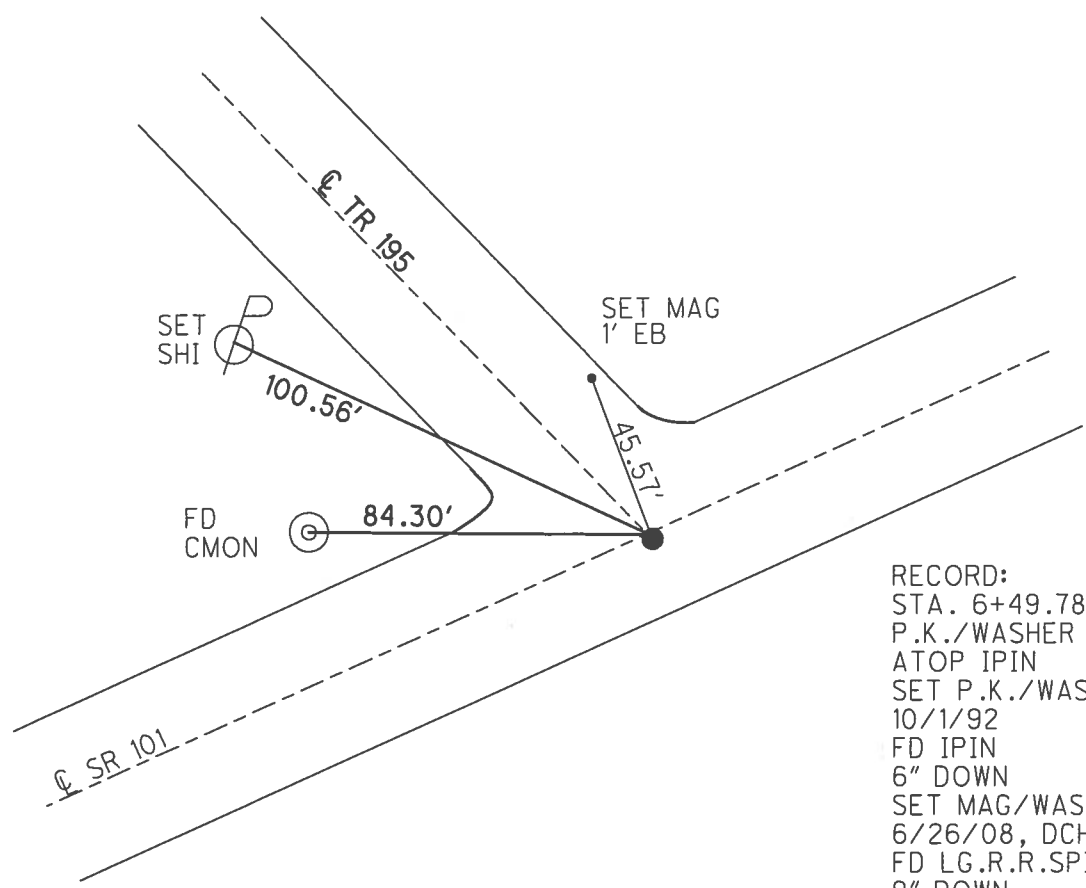
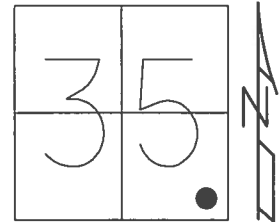


O.D.O.T. DISTRICT 2 SURVEY OFFICE (USE ONLY)

PERSONNEL	REFERENCE NO.	1A	SHEET	2	OF	11
NOTES	RHOADES	DATE	3/28/17	ROUTE	SR 101	
H.C.	O'DONNELL	WEATHER	CLOUDY	COUNTY	SANDUSKY	
R.C.	HELDMAN	TEMP.	43°	TOWNSHIP	GREEN CREEK	
				SECTION	35	
				T	4	N
				R	16	E

TYPE MONUMENT R.R.SPIKE
 ON SURFACE - ~~BELOW~~ 9"
~~LEFT~~ - Q PAV'T - RIGHT 0.5'
- TO - EDGE PAVEMENT
 S.L.M. 6+50

GRID: NORTHING: 579668.064 EASTING: 1837257.967

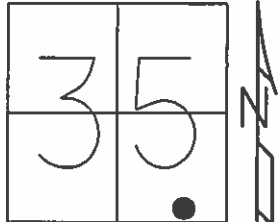


RECORD:
 STA. 6+49.78
 P.K./WASHER
 ATOP IPIN
 SET P.K./WASHER
 10/1/92
 FD IPIN
 6" DOWN
 SET MAG/WASHER
 6/26/08, DCH
 FD LG.R.R.SPIKE
 9" DOWN
 REF1
 6/16/16, JFO
 FD HOLE
 W/R.R.SPIKE
 9/12/17, JMR

O.D.O.T. DISTRICT 2 SURVEY OFFICE (USE ONLY)

PERSONNEL _____ REFERENCE NO. 1A SHEET 2 OF 10
 NOTES HOMAN DATE 6-26-2008 ROUTE SR 101
 H.C. ROUSOS WEATHER CLOUDY COUNTY SANDUSKY
 R.C. HOMAN TEMP. 85° TOWNSHIP GREEN CREEK
 _____ SECTION 35
 _____ T 4 N R 16 E

TYPE MONUMENT IPIN
 ON SURFACE - ~~BELOW~~ 6"
~~LEFT~~ - Q PAV'T - RIGHT 0.5'
 _____ TO _____ EDGE PAVEMENT
 S.L.M. 6+50

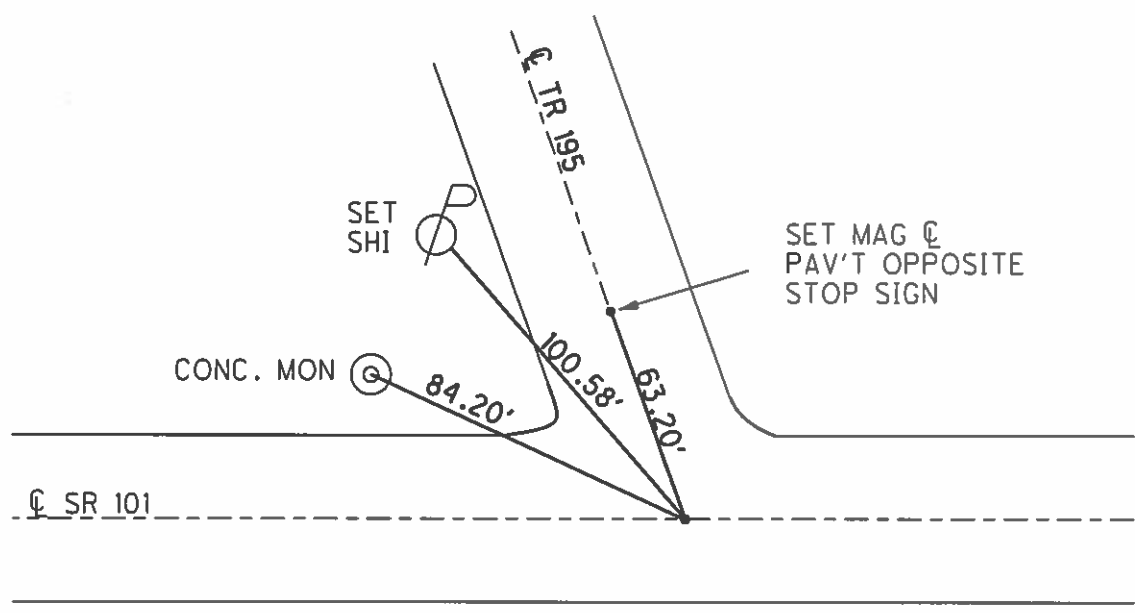


GRID: NORTHING: 579668.070 EASTING: 1837257.953

RECORD:
 STA. 6+49.78
 P.K./WASHER
 ATOP IPIN

 SET P.K./WASHER
 10/1/92

 SET MAG/WASHER
 6/26/08



O.D.O.T. DISTRICT 2 SURVEY OFFICE

PERSONNEL

REFERENCE NO. 1-A

SHEET 2 OF 10

NOTES Cheney

H.C. RIPPLE

R.C. BARBOUR

DATE 10-1-92

WEATHER SUNNY

TEMP. 65°

ROUTE SR#101

COUNTY SANDUSKY

TOWNSHIP GREEN CREEK

SECTION 35

T 4 N R 16 E

TYPE MONUMENT P.K. & WASHER

ON SURFACE - BELOW YES

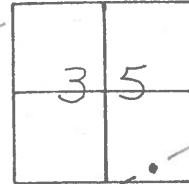
LEFT - 0 PAV'T. - RIGHT 0.5'

TO EDGE PAVEMENT

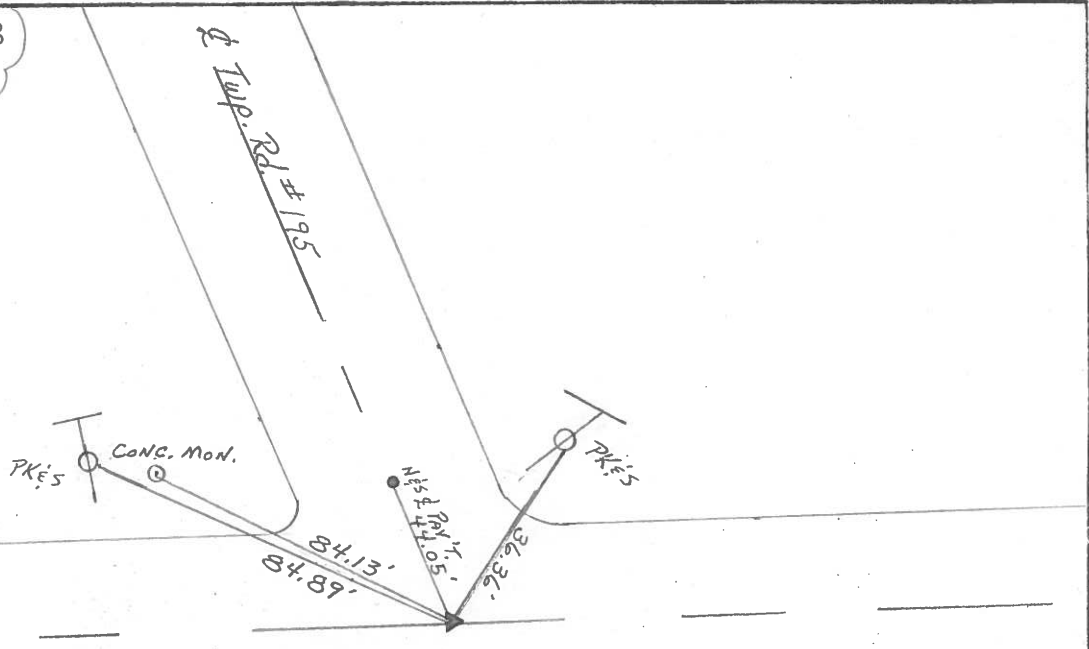
S.L.M. 6+50

Re-set
P.K./washer
10-1-92

IA



Record: 6+49.78
PK & washer ATOP
Iron Rod



County Sandusky S.R. 101

Township Green Creek

Section 35

T4N, R16E

Personnel Cronin

Ripple

Geyman

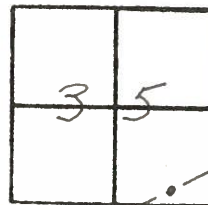
Barbour

Date 11/17/83

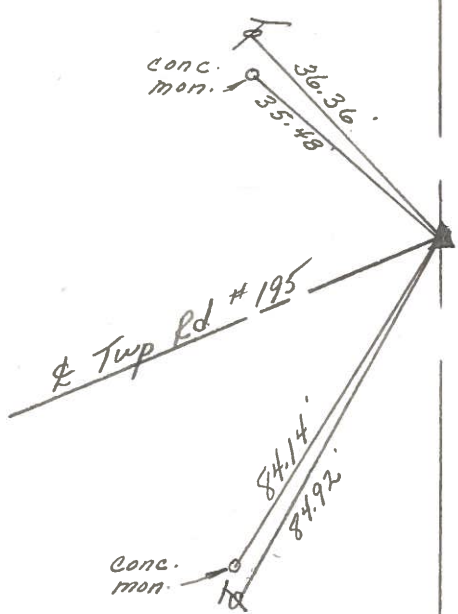
Weather overcast

Temp. 34°

#1-A



6749.78
P.K. & washer atop
iron rod



S.R. #101

PERSONNEL TITLE PERSONNEL TITLE

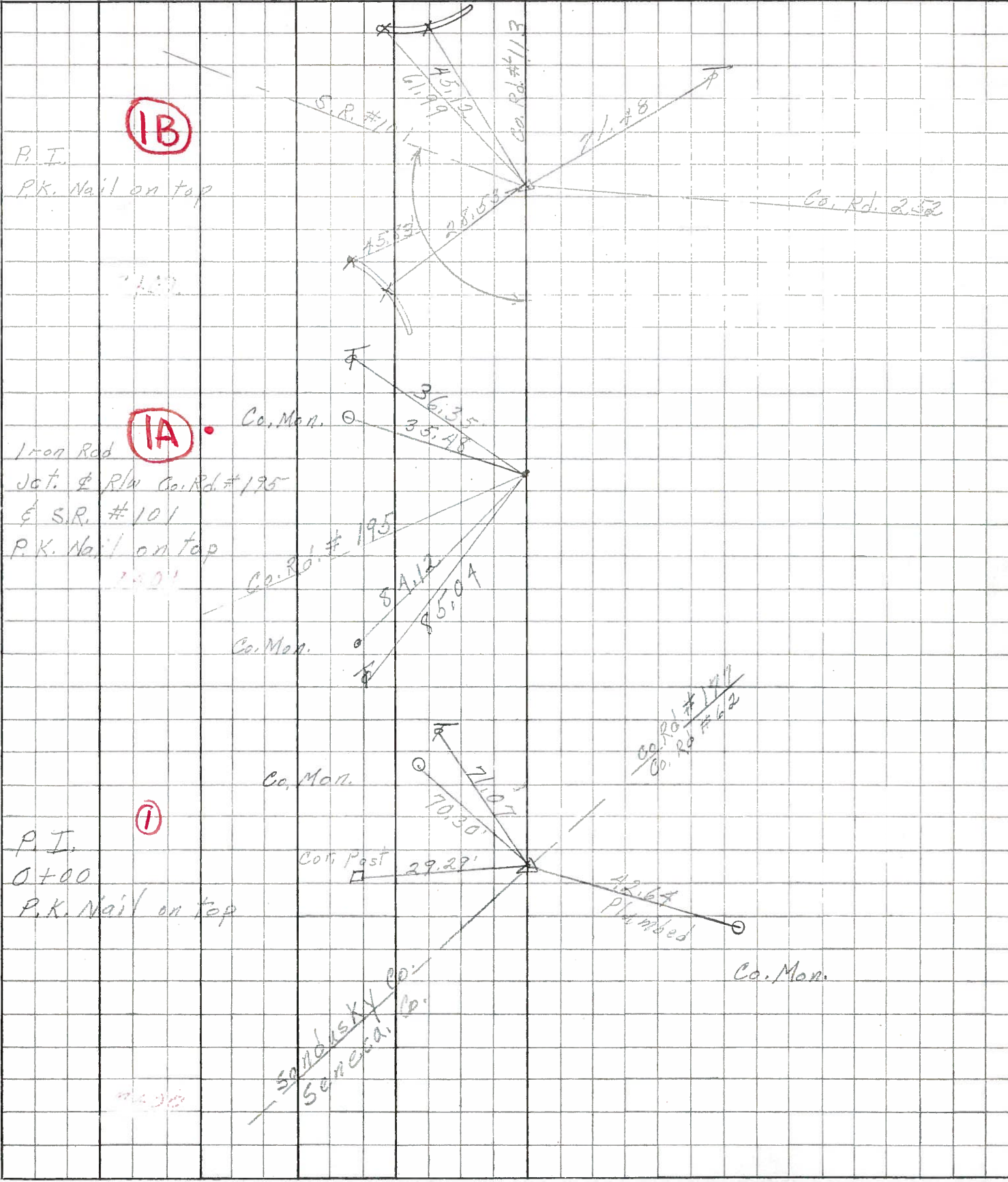
COUNTY Sandusky DATE Feb. 29, 1968

Schneider _____
Mosser _____
Barbour _____
Potts _____

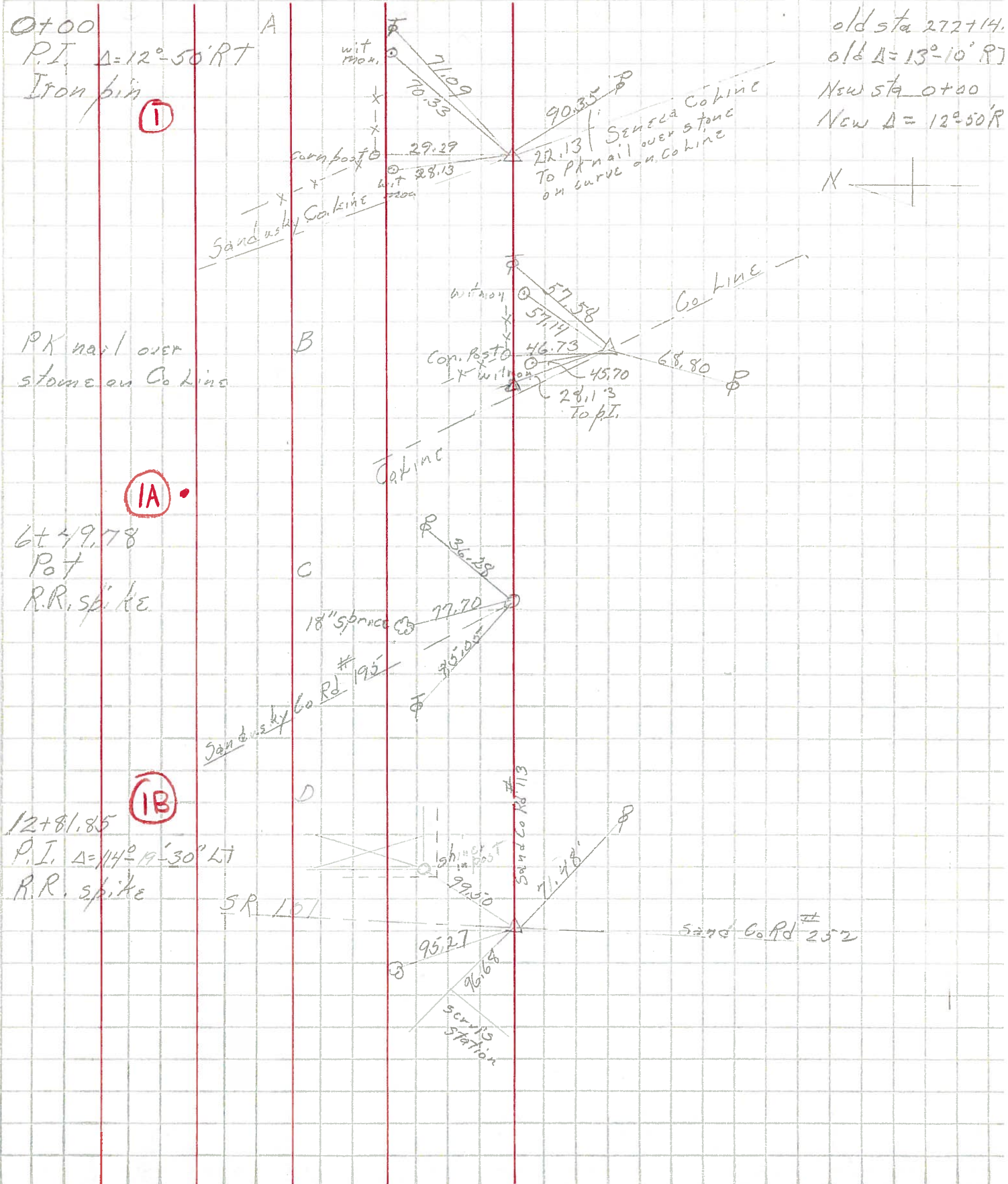
S. R. # 101 WEATHER Cloudy-SNOW

SEC. Sen-San. Co. line North TEMP. 25'

DESCRIPTION Ties for Control Points LEFT CENTER LINE RIGHT JOB NO.



PERSONNEL	TITLE	PERSONNEL	TITLE	COUNTY	DATE	WEATHER	TEMP.
Krobill				Sandusky	3-4-64		
Kowaleski				S. R. 101			
Bruggeman							
DESCRIPTION <u>Seneca Co Line to N.P. & St.L. RR</u>							
	LEFT	CENTER LINE	RIGHT				JOB NO.



old sta 272+14.
 old $\Delta = 13^\circ 10' RT$
 New sta 0+00
 New $\Delta = 12^\circ 50' R$

