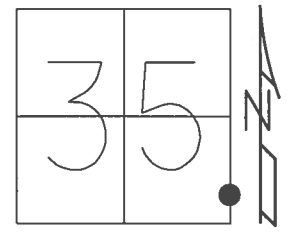


O.D.O.T. DISTRICT 2 SURVEY OFFICE (USE ONLY)

PERSONNEL _____ REFERENCE NO. 1 B SHEET 3 OF 11

NOTES RHOADES DATE 6/16/16 ROUTE SR 101
 H.C. O'DONNELL WEATHER CLOUDY COUNTY SANDUSKY
 R.C. RHOADES TEMP. 43° TOWNSHIP GREEN CREEK
 _____ SECTION 35
 _____ T 4 N R 16 E

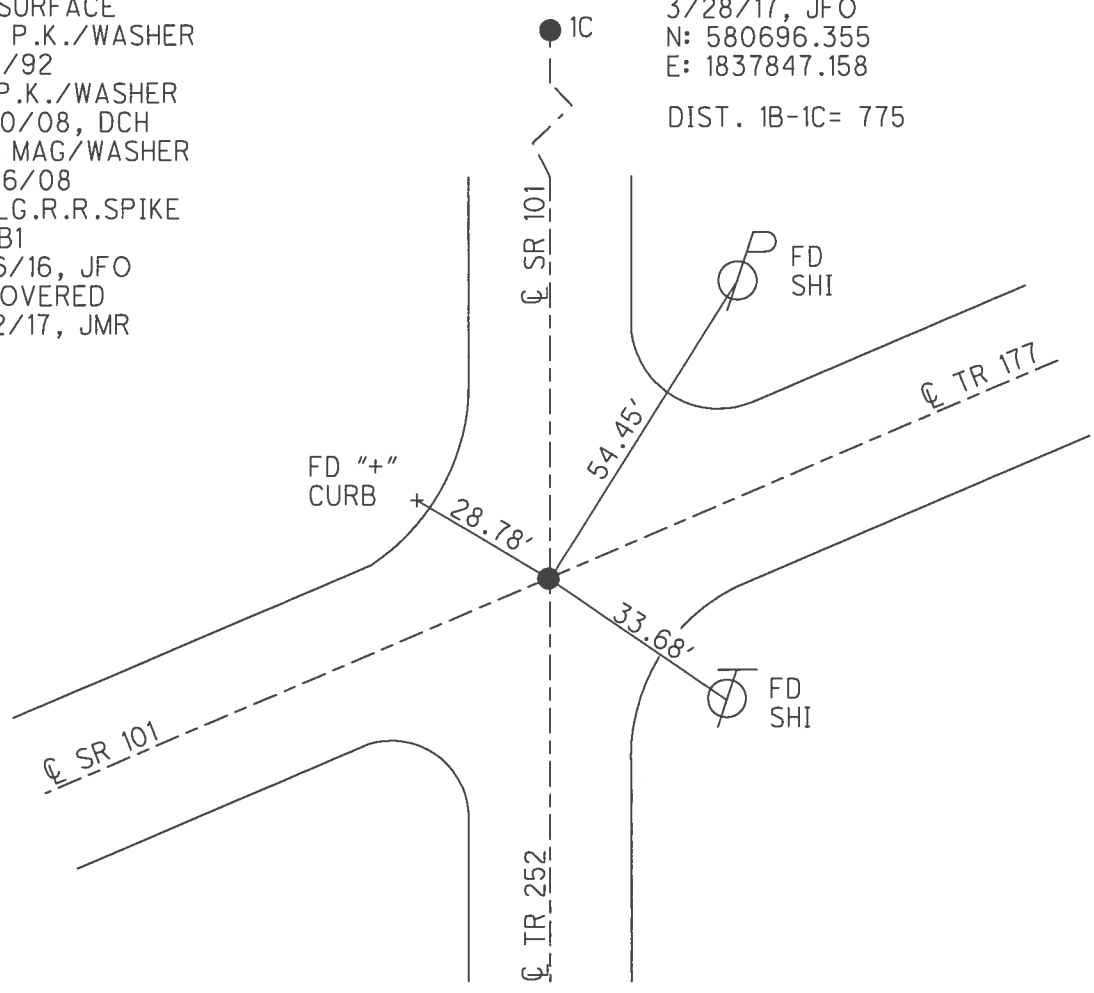
TYPE MONUMENT LG.R.R.SPIKE
~~ON SURFACE~~ - BELOW 1"
 LEFT - ☉ PAV'T - RIGHT ON
- TO - EDGE PAVEMENT
 S.L.M. 12+83



GRID: NORTHING: 579921.197 EASTING: 1837837.660

RECORD:
 P.I. 12+81.05
 FD P.K./WASHER
 AT SURFACE
 SET P.K./WASHER
 10/1/92
 FD P.K./WASHER
 6/30/08, DCH
 SET MAG/WASHER
 10/16/08
 FD LG.R.R.SPIKE
 REFB1
 6/16/16, JFO
 UNCOVERED
 9/12/17, JMR

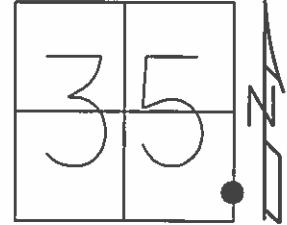
FD TACK, REFC1
 3/28/17, JFO
 N: 580696.355
 E: 1837847.158
 DIST. 1B-1C= 775



O.D.O.T. DISTRICT 2 SURVEY OFFICE (USE ONLY)

PERSONNEL _____ REFERENCE NO. 1 B SHEET 3 OF 10
 NOTES HOMAN DATE 6-30-2008 ROUTE SR 101
 H.C. ROUSOS WEATHER CLOUDY/RAIN COUNTY SANDUSKY
 R.C. HOMAN TEMP. 70° TOWNSHIP GREEN CREEK
 _____ SECTION 35
 _____ T 4 N R 16 E

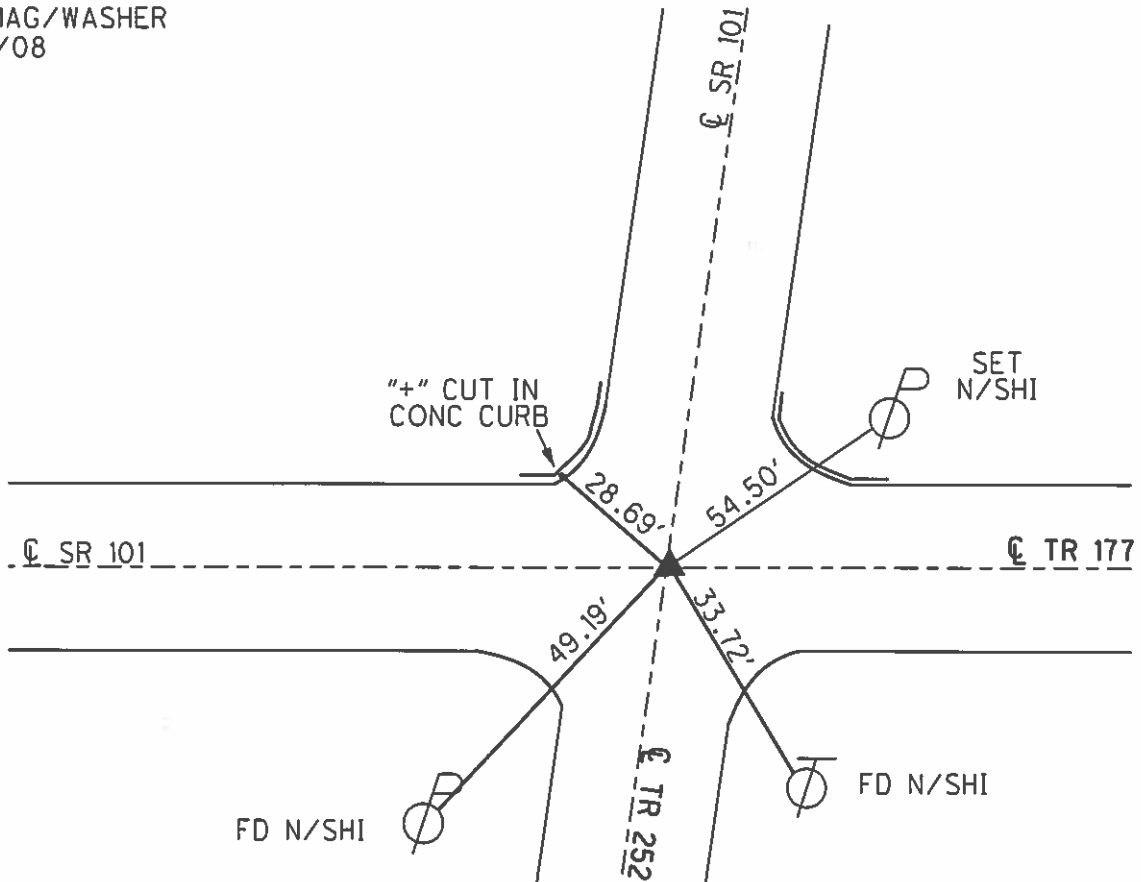
TYPE MONUMENT _____ P.K./WASHER _____
~~ON SURFACE~~ - BELOW 1"
 LEFT - ☉ PAV'T - RIGHT _____ ON _____
_____ TO _____ EDGE PAVEMENT
 S.L.M. 12+83
 GRID: NORTHING: 579921.216 EASTING: 1837837.463



RECORD:
 P.I. 12+81.05
 FD P.K./WASHER
 AT SURFACE

 SET P.K./WASHER
 10/1/92

 SET MAG/WASHER
 10/16/08



O.D.O.T. DISTRICT 2 SURVEY OFFICE

PERSONNEL

REFERENCE NO. 1-B

SHEET 3 OF 10

NOTES Cheney

H.C. RIPPLE

R.C. BARBOUR

DATE 10-1-92

WEATHER SUNNY

TEMP. 65°

ROUTE SR#101

COUNTY SANDUSKY

TOWNSHIP GREEN CREEK

SECTION 35

T4 N R16 E

TYPE MONUMENT P.K. FWASHER

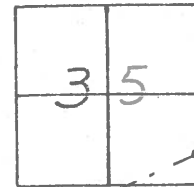
ON SURFACE - BELOW yes

LEFT - & PAV'T. - RIGHT yes

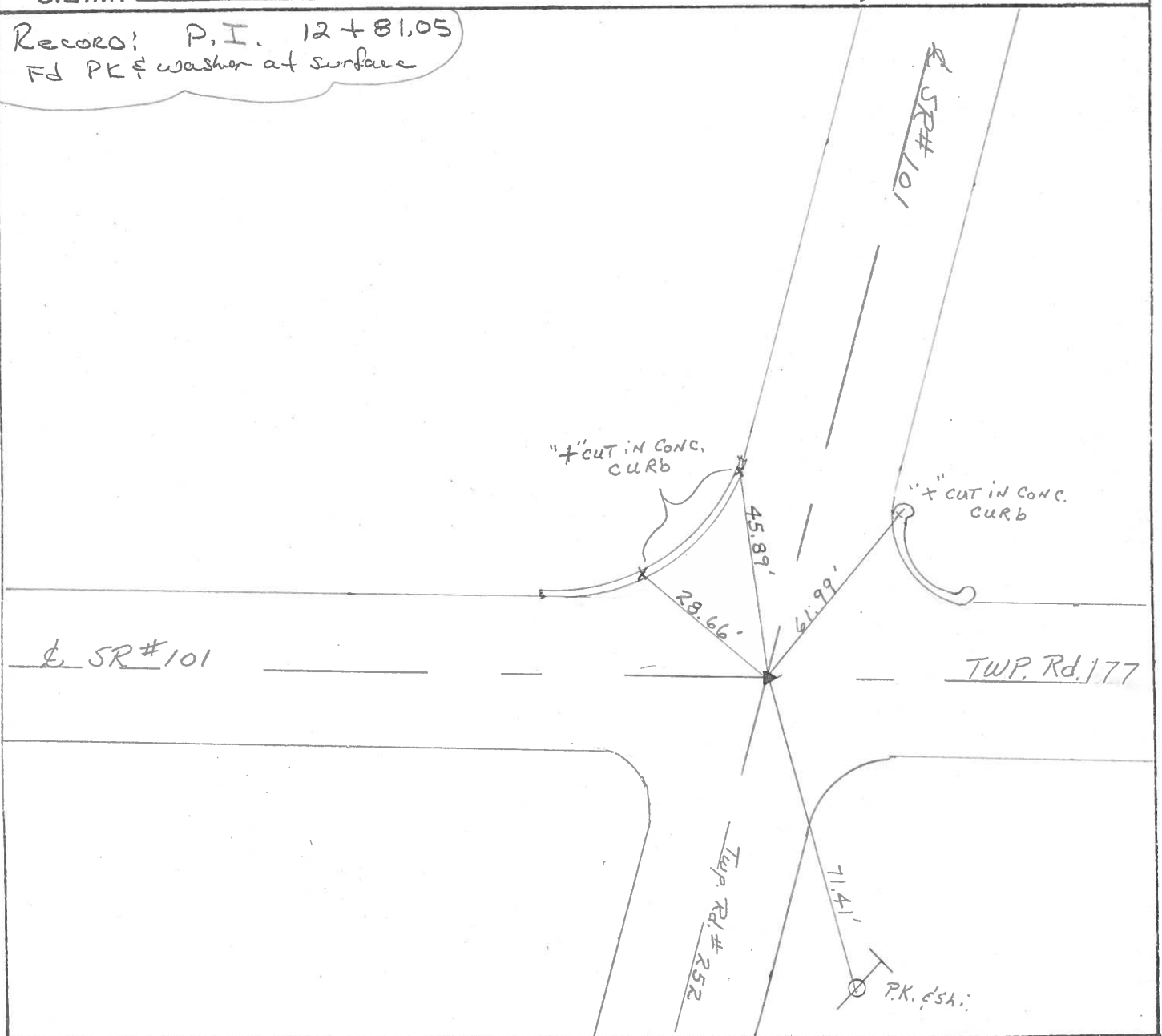
TO EDGE PAVEMENT

S.L.M. 12+83

Reset.
PK/washer
10-1-92



Records: P.I. 12+81.05
Fd PK & washer at surface



County Sandusky S.R. # 101

Township Green Creek

Section # 35

T 4 N, R 16 E

Personnel Cronin

Ripple

Geyman

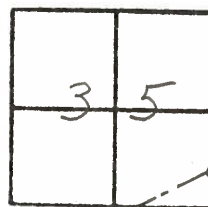
Barbour

#1-B

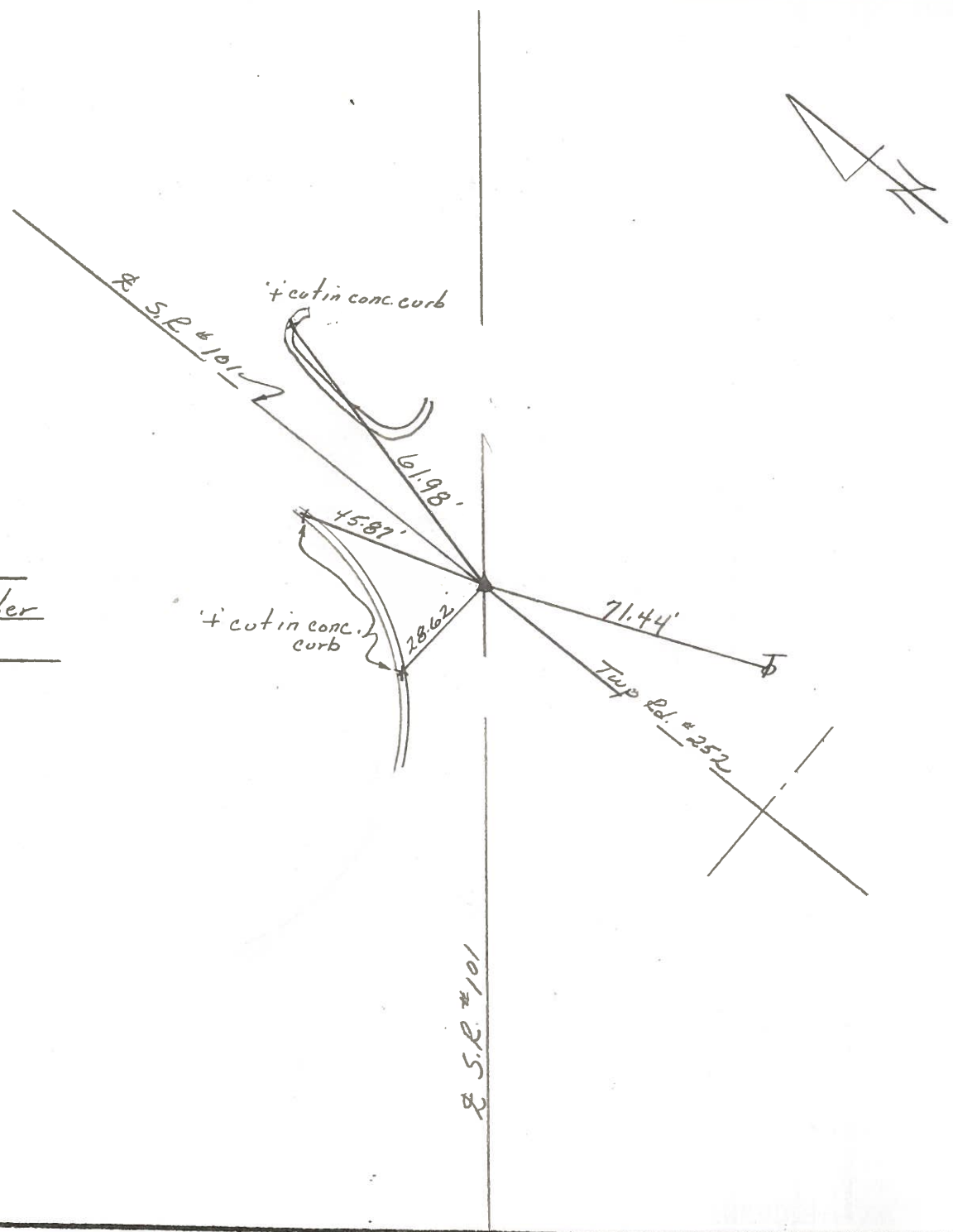
Date 11/17/83

Weather overcast

Temp. 34°



P.I.
12+81.05
Fd. P.K. and washer
on surface



PERSONNEL TITLE PERSONNEL TITLE

Schneider _____

Mosser _____

Barbour _____

Potts _____

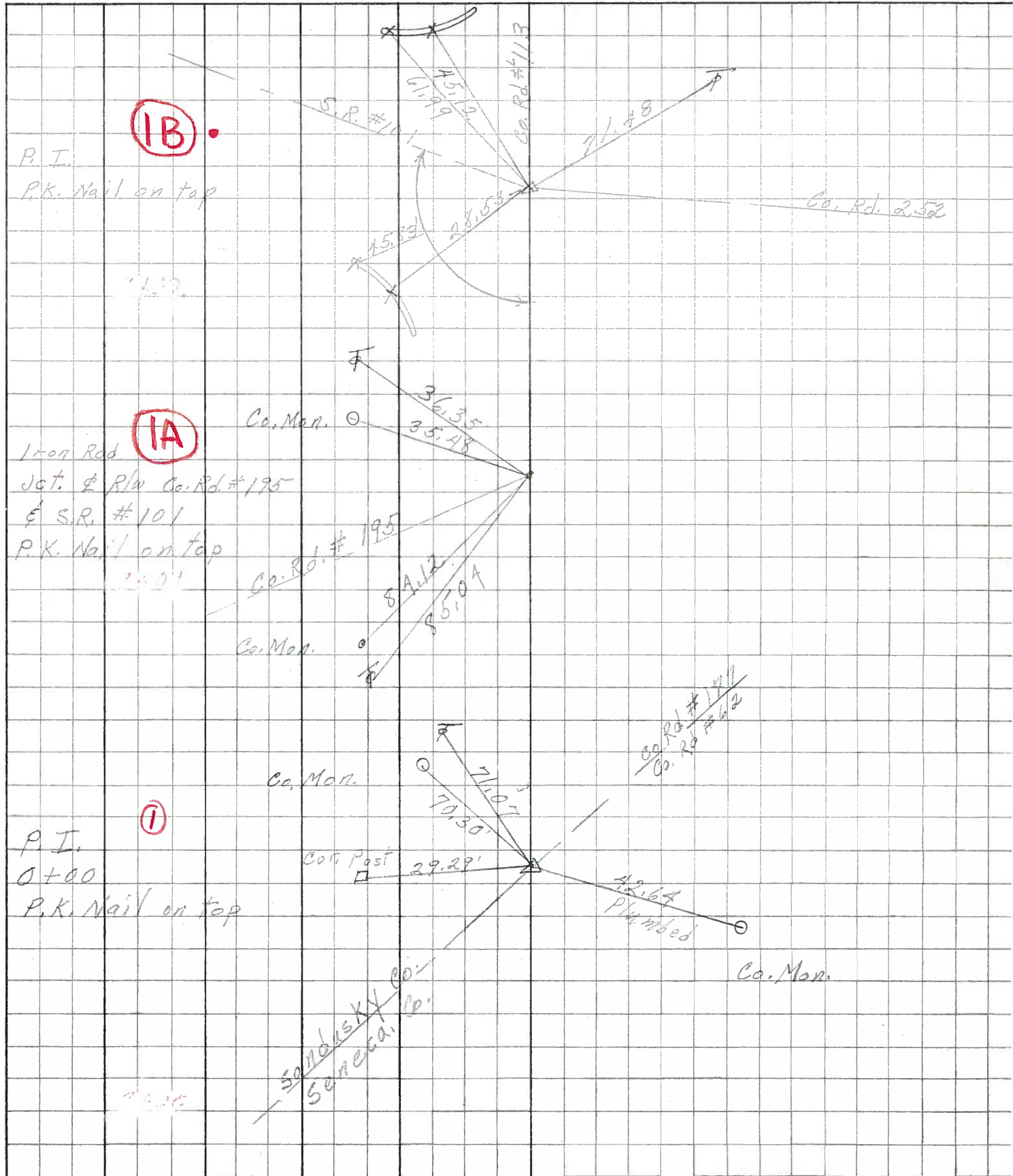
COUNTY Sandusky DATE Feb. 29, 1968

S. R. # 101 WEATHER Cloudy-SNOW

SEC. Sen-San. Co. line North TEMP. 25'

DESCRIPTION Ties for Control Points JOB NO.

LEFT CENTER LINE RIGHT



PERSONNEL	TITLE	PERSONNEL	TITLE	COUNTY	DATE	WEATHER	TEMP.
Kvo bill				Sandusky	3-4-64		
Kowalski				S. R. 101			
Bruggeman							
DESCRIPTION <u>Seneca Co Line to N.P. & St.L. RR</u>				JOB NO.			
LEFT		CENTER LINE		RIGHT			

