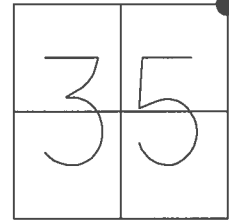


O.D.O.T. DISTRICT 2 SURVEY OFFICE (USE ONLY)

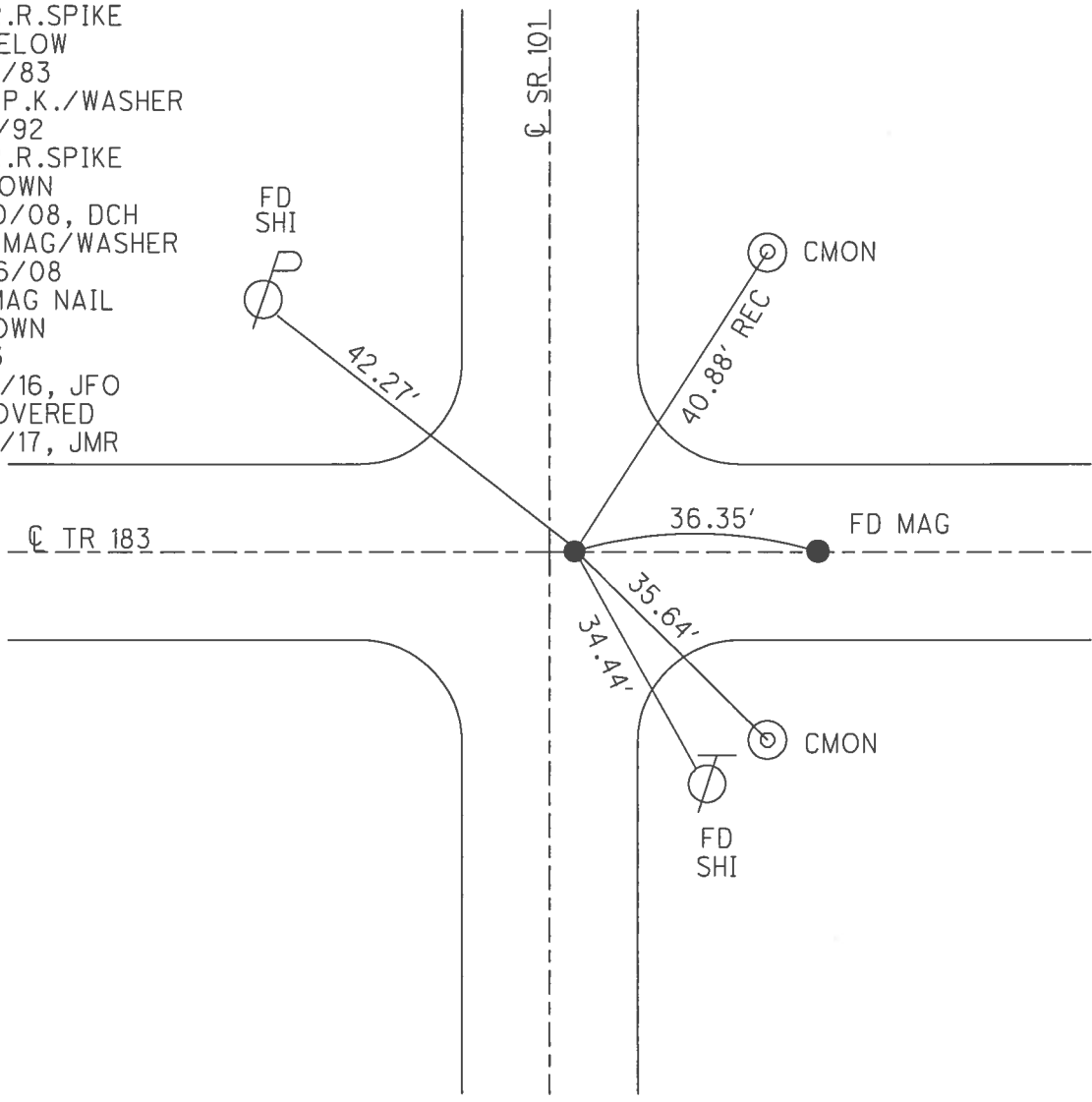
PERSONNEL _____ REFERENCE NO. 3 SHEET 5 OF 11
 NOTES RHOADES DATE 3/28/17 ROUTE SR 101
 H.C. O'DONNELL WEATHER MIST COUNTY SANDUSKY
 R.C. HELDMAN TEMP. 43° TOWNSHIP GREEN CREEK
 SECTION 35, 36
 T 4 N R 16 E

TYPE MONUMENT MAG NAIL
~~ON SURFACE~~ - BELOW 1"
~~LEFT~~ - Q PAV'T - RIGHT 2'
- TO - EDGE PAVEMENT
 S.L.M. 60+46



GRID: NORTHING: 584691.909 EASTING: 1837894.008

RECORD:
 FD R.R.SPIKE
 2" BELOW
 11/14/83
 SET P.K./WASHER
 10/1/92
 FD R.R.SPIKE
 4" DOWN
 6/30/08, DCH
 SET MAG/WASHER
 10/16/08
 FD MAG NAIL
 1" DOWN
 REF3
 6/16/16, JFO
 UNCOVERED
 9/12/17, JMR



O.D.O.T. DISTRICT 2 SURVEY OFFICE (USE ONLY)

PERSONNEL _____ REFERENCE NO. 3 SHEET 5 OF 10

NOTES HOMAN DATE 6-30-2008 ROUTE SR 101
 H.C. ROUSOS WEATHER CLOUDY/RAIN COUNTY SANDUSKY
 R.C. HOMAN TEMP. 70° F TOWNSHIP GREEN CREEK
 _____ SECTION 35, 36
 _____ T 4 N R 16 E

TYPE MONUMENT _____ RR SPK _____

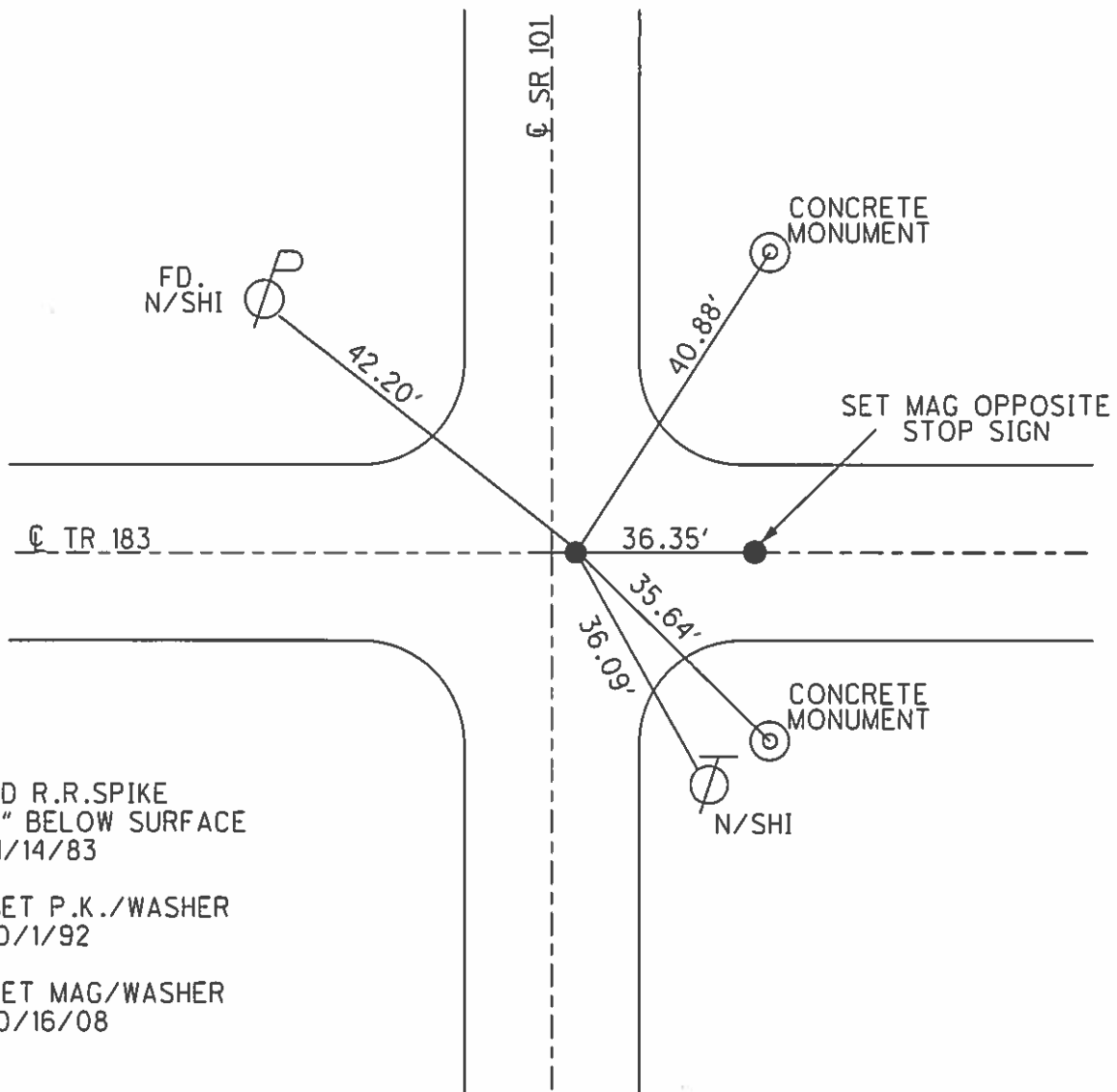
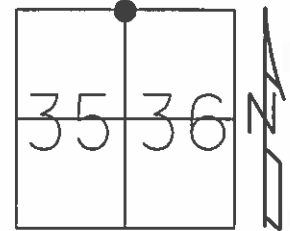
~~ON SURFACE~~ - BELOW 4"

~~LEFT~~ - ℄ PAV'T - RIGHT 2'

- TO - EDGE PAVEMENT

S.L.M. 60+46

GRID: NORTHING: 584691.935 EASTING: 1837893.899



FD R.R. SPIKE
 2" BELOW SURFACE
 11/14/83

SET P.K./WASHER
 10/1/92

SET MAG/WASHER
 10/16/08

O.D.O.T. DISTRICT 2 SURVEY OFFICE

PERSONNEL

REFERENCE NO. # 3

SHEET 5 OF 10

NOTES Cheney

H.C. Ripple

R.C. Barbour

DATE 10-1-92

WEATHER SUNNY

TEMP. 70°

ROUTE SR#101

COUNTY SANDUSKY

TOWNSHIP GREEN CREEK

SECTION 35 & 36

T 4 N R 16 E

TYPE MONUMENT R.R. SPK.

~~ON SURFACE~~ - BELOW 4"

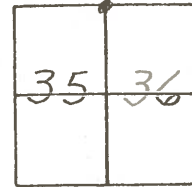
~~LEFT - C PAV'T.~~ - RIGHT 3' RT. & PAV'T.

TO EDGE PAVEMENT

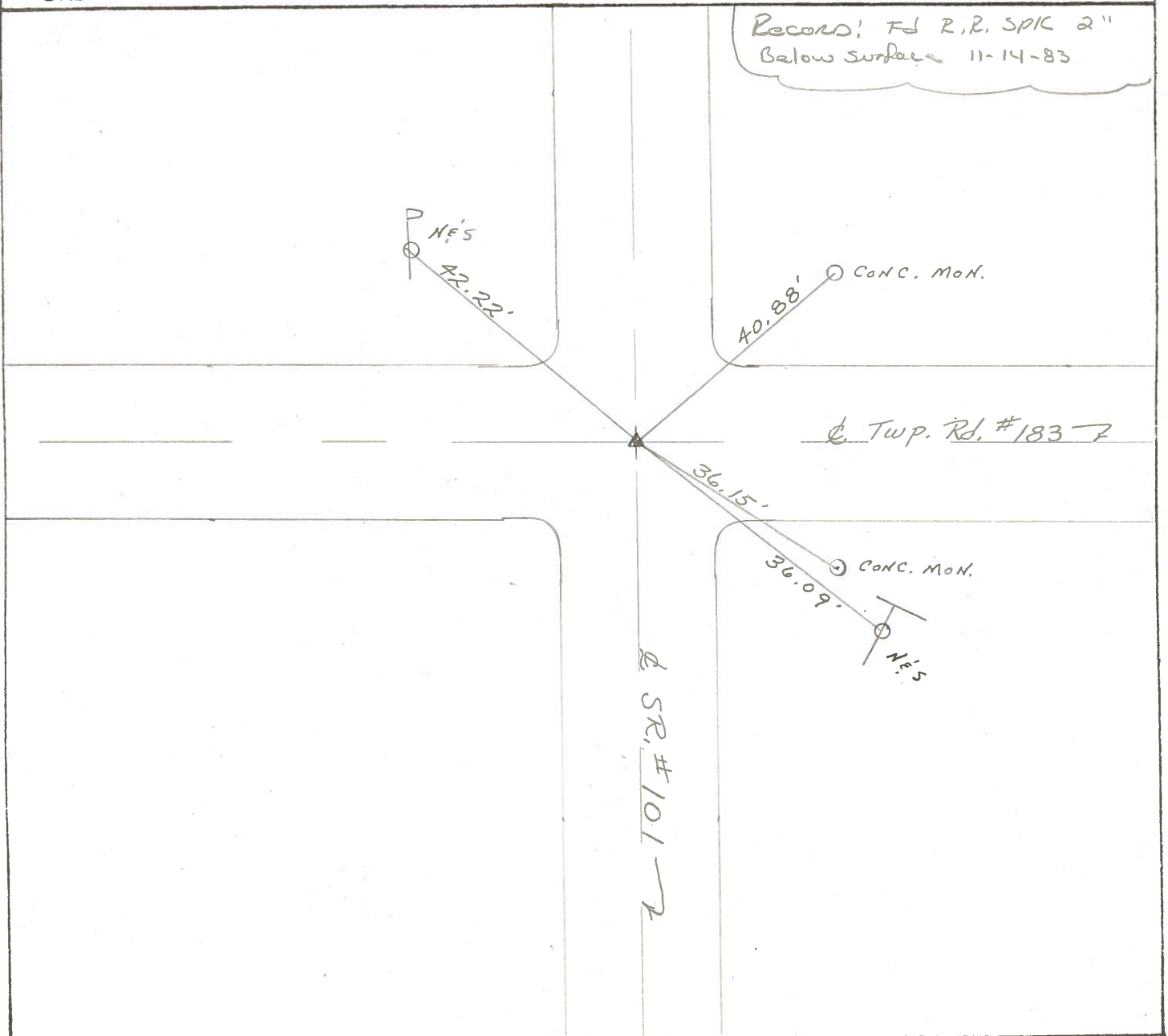
S.L.M. 60+46

Re-set
PK/washer
10-1-92

3



Record: Fd R.R. SPK 2"
Below surface 11-14-83



County Sandusky S.R. # 101

Township Green Creek

Section N.E. Sec. 35 - N.W. Sec. 36

T 1 N, R 16 E

Personnel Cronin

Ripple

Geyman

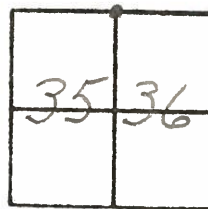
Barbour

Date 11/14/83

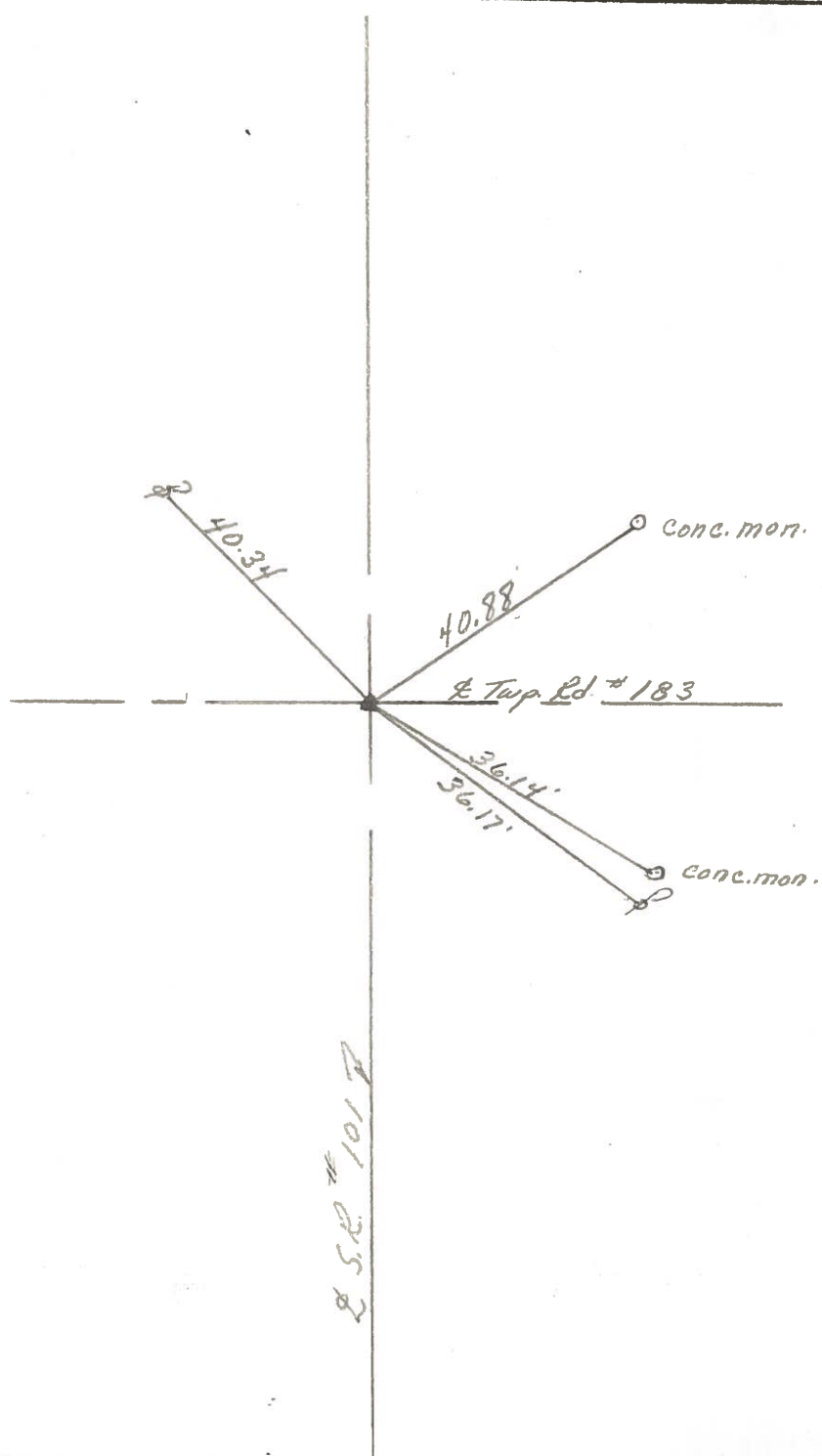
Weather sunny - windy

Temp. 42°

#3



1/2" P.R. spike 2"
below surface . 2.6'
at E limit.



S.R. # 101

PERSONNEL TITLE PERSONNEL TITLE

Schneider
Mosser
Barbour
Potts

COUNTY Sandusky

DATE Feb. 29, 1968

S. R. # 101

WEATHER Cloudy & snow

SEC. Sen. - San. Co. Line North TEMP. 25°

DESCRIPTION Ties for Control Points

JOB NO.

LEFT CENTER LINE RIGHT

