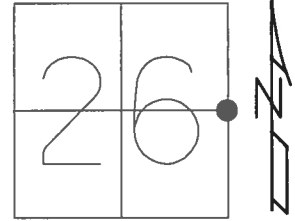


O.D.O.T. DISTRICT 2 SURVEY OFFICE (USE ONLY)

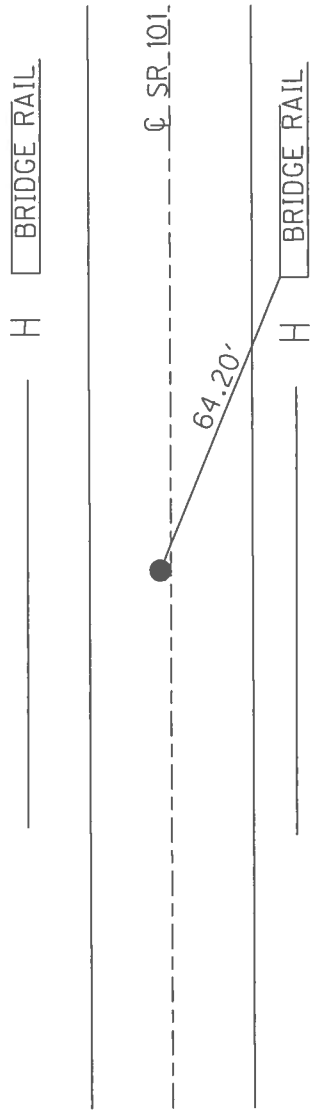
PERSONNEL _____ REFERENCE NO. 3 A SHEET 6 OF 11
 NOTES HOMAN DATE 6/30/08 ROUTE SR 101
 H.C. ROUSOS WEATHER CLOUDY/RAIN COUNTY SANDUSKY
 R.C. HOMAN TEMP. 70° TOWNSHIP GREEN CREEK
 _____ SECTION 26
 _____ T 4 N R 16 E

TYPE MONUMENT PK/WASHER
 ON SURFACE - ~~BELOW~~ ON
 LEFT - ☉ PAV'T - ~~RIGHT~~ 1.5'
 _____ TO _____ EDGE PAVEMENT
 S.L.M. 87+04

GRID: NORTHING: 587349.999 EASTING: 1837917.242



RECORD:
 FD 5/8" IPIN
 SET P.K./WASHER
 10/1/92
 FD P.K./WASHER
 6/30/08, DCH
 SET MAG/WASHER
 9/29/08
 FD MAG NAIL
 REFA3
 6/16/16, JFO
 UNCOVERED
 9/12/17, JMR

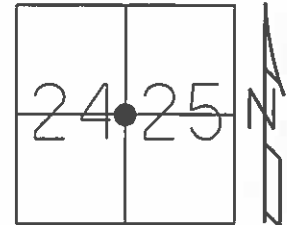


FD YELLOW
 PAINT WHERE
 RECORD NOTCH
 WAS SET

O.D.O.T. DISTRICT 2 SURVEY OFFICE (USE ONLY)

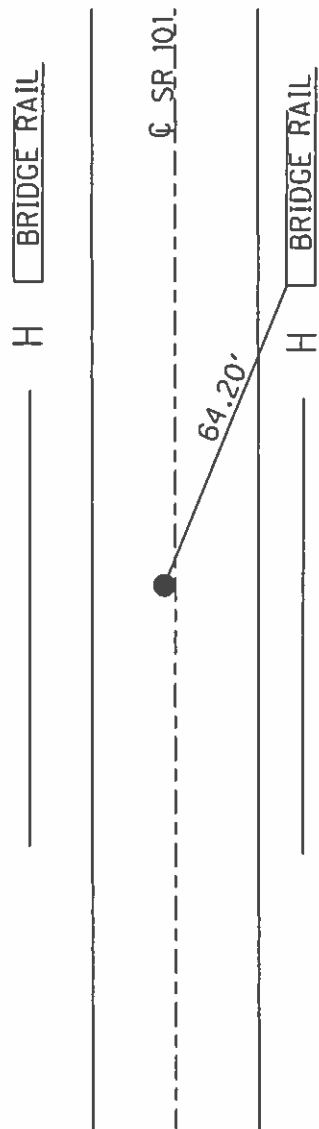
PERSONNEL _____ REFERENCE NO. 3 A SHEET 6 OF 10
 NOTES HOMAN DATE 6-30-2008 ROUTE SR 101
 H.C. ROUSOS WEATHER CLOUDY/RAIN COUNTY SANDUSKY
 R.C. HOMAN TEMP. 70° TOWNSHIP GREEN CREEK
 _____ SECTION 24, 25
 _____ T 4 N R 16 E

TYPE MONUMENT PK/WASHER
 ON SURFACE - ~~BELOW~~ ON
 LEFT - ☉ PAV'T - ~~RIGHT~~ 1.5'
 _____ TO _____ EDGE PAVEMENT
 S.L.M. 87+04



GRID: NORTHING: 587349.716 EASTING: 1837917.212

RECORD:
 FD 5/8" IPIN
 SET P.K./WASHER
 10/1/92
 SET MAG/WASHER
 9/29/08



FD YELLOW
 PAINT WHERE
 RECORD NOTCH
 WAS SET

O.D.O.T. DISTRICT 2 SURVEY OFFICE

PERSONNEL

REFERENCE NO. #3A

SHEET 6 OF 10

NOTES Cheney
 H.C. RIPPLE
 R.C. BARBOUR

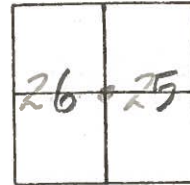
DATE 10-1-92
 WEATHER SUNNY
 TEMP. 70°

ROUTE SR#101
 COUNTY SANDUSKY
 TOWNSHIP GREEN CREEK
 SECTION 24E25
T4N R16E

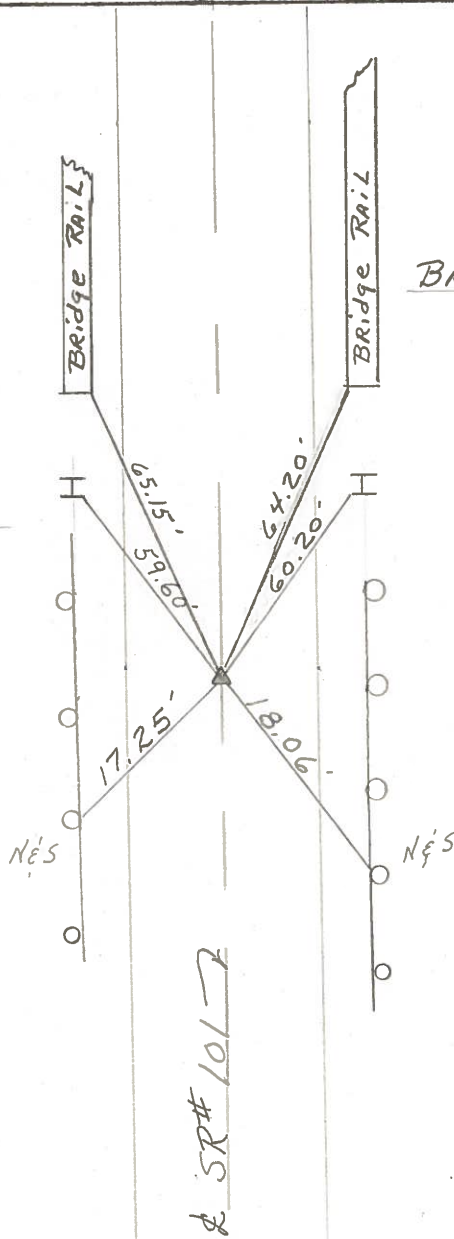
TYPE MONUMENT 5/8" I. ROD
~~ON SURFACE~~ - BELOW 2"
 LEFT- & PAV'T. - RIGHT 1.0'
 TO EDGE PAVEMENT
 S.L.M. 87+04

Re-Set
 PK/WASHER
 10-1-92

3A



Notch (Both Sides)
1ST STEEL G.R. POST



Bridge # 01.65

& SR#101

County Sandusky S.R. # 101

Township Green Creek

Section E 1/2 Post Sec. 24 - W 1/2 Post Sec. 25

T4N, R16E

Personnel Cronin

Ripple

Geyman

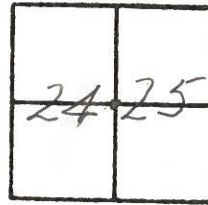
Barbour

Date 11/14/83

Weather sunny - windy

Temp. 42°

#3-A



Fd 5/8 rod 2" below surface and 10 ft. of E of Point

