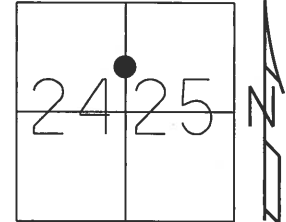


O.D.O.T. DISTRICT 2 SURVEY OFFICE (USE ONLY)

PERSONNEL _____ REFERENCE NO. 4 A SHEET 8 OF 10
 NOTES HOMAN DATE 7-1-2008 ROUTE SR 101
 H.C. ROUSOS WEATHER SUNNY COUNTY SANDUSKY
 R.C. HOMAN TEMP. 70° TOWNSHIP GREEN CREEK
 _____ SECTION 24, 25
 _____ T 4 N R 16 E

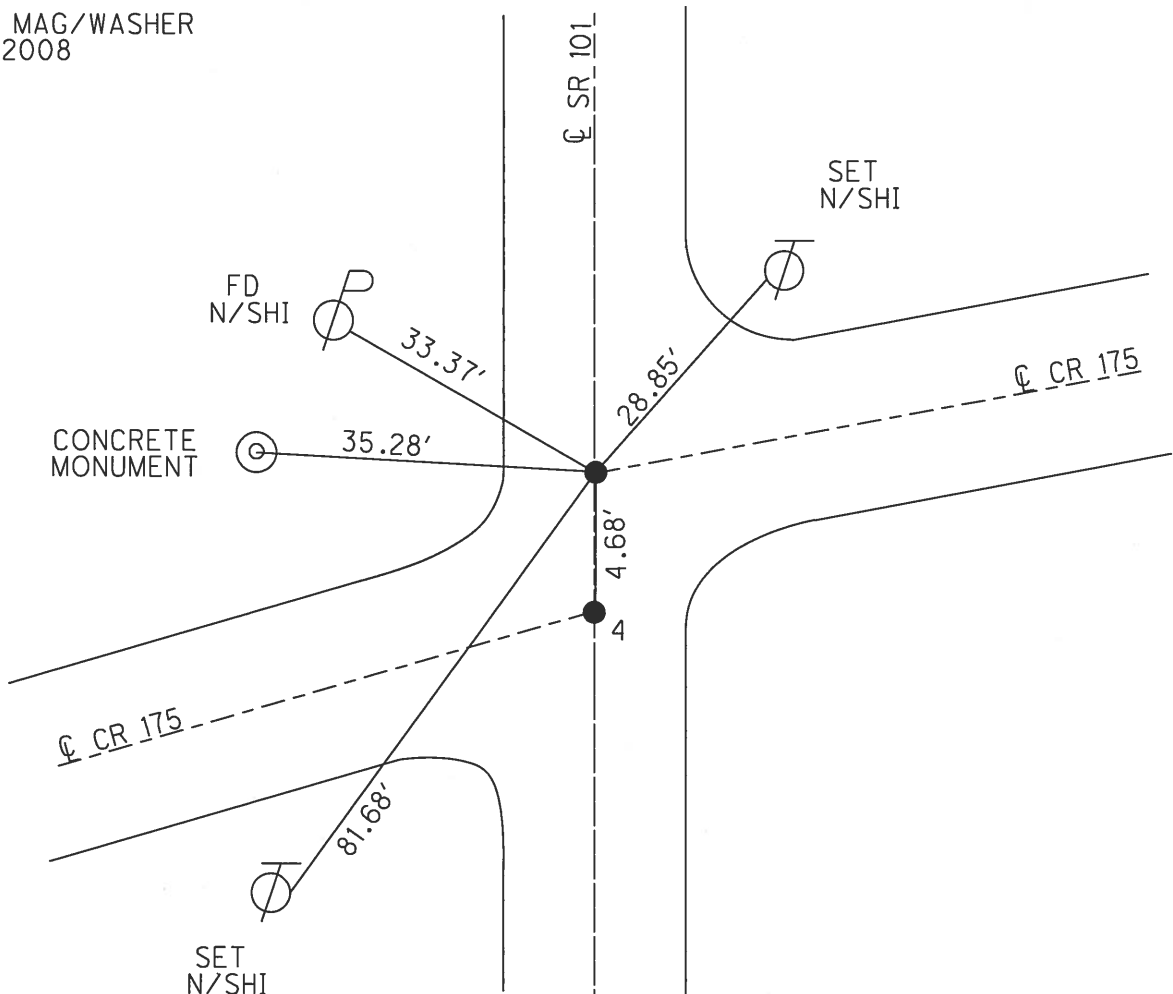
TYPE MONUMENT PK/WASHER
 ON SURFACE - ~~BELOW~~ ON
~~LEFT~~ - ☉ PAV'T - RIGHT 1.5'
- TO - EDGE PAVEMENT
 S.L.M. 91+87.7



GRID: NORTHING: 587831.400 EASTING: 1837921.485

RECORD:
 NOTE: ORIGIN OF POINTS UNKNOWN
 MAY OR MAY NOT BE ON ☉ OF
 SR 101 &/OR ☉ SEC. LINE

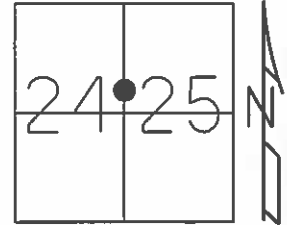
RESET MAG/WASHER
 9/29/2008



O.D.O.T. DISTRICT 2 SURVEY OFFICE (USE ONLY)

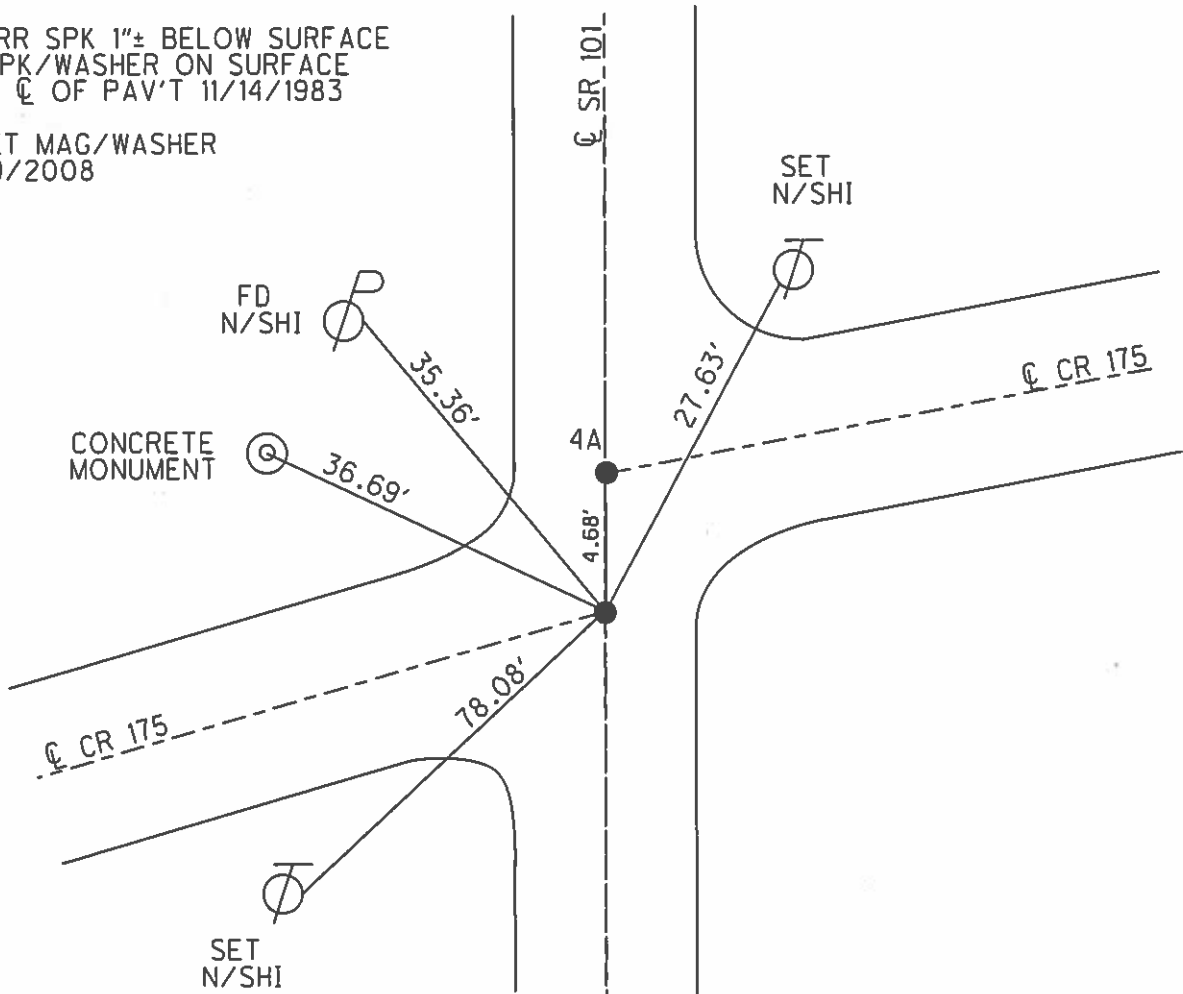
PERSONNEL _____ REFERENCE NO. 4 SHEET 7 OF 10
 NOTES HOMAN DATE 7-1-2008 ROUTE SR 101
 H.C. ROUSOS WEATHER SUNNY COUNTY SANDUSKY
 R.C. HOMAN TEMP. 70° F TOWNSHIP GREEN CREEK
 SECTION 24, 25
 T 4 N R 16 E

TYPE MONUMENT PK/WASHER
 ON SURFACE - ~~BELOW~~ ON
~~LEFT~~ - ☉ PAV'T - RIGHT 1.0'
- TO - EDGE PAVEMENT
 S.L.M. 91+83
 GRID: NORTHING: 587826+771 EASTING: 1837921.417



RECORD:
 NOTE: ORIGIN OF POINTS UNKNOWN
 MAY OR MAY NOT BE ON ☉ OF
 SR 101 &/OR ☉ SEC. LINE

FD. RR SPK 1"± BELOW SURFACE
 SET PK/WASHER ON SURFACE
 1' RT ☉ OF PAV'T 11/14/1983
 RESET MAG/WASHER
 9/29/2008



O.D.O.T. DISTRICT 2 SURVEY OFFICE

PERSONNEL

REFERENCE NO. #4

SHEET 7 OF 10

NOTES Cheney

H.C. RIPPLE

R.C. BARBOUR

DATE 10-1-92

WEATHER _____

TEMP. _____

ROUTE SR#101

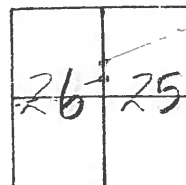
COUNTY SANDUSKY

TOWNSHIP GREEN CREEK

SECTION 24 & 25

T 4 N R 16 E

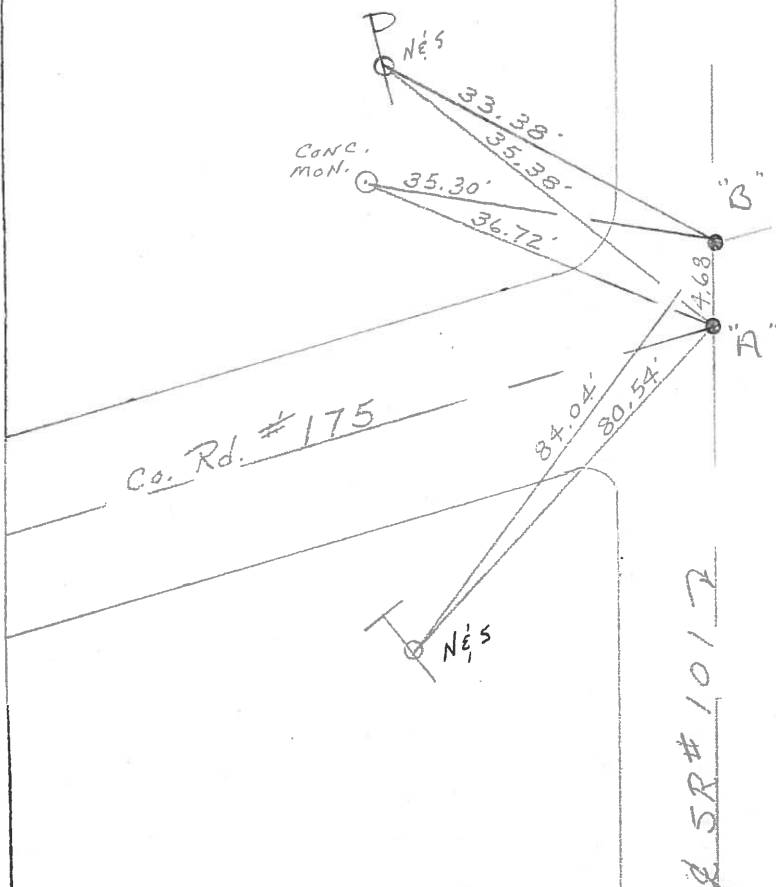
	"A"	"B"
TYPE MONUMENT	P.K./washer	P.K./washer
ON SURFACE - BELOW	yes	yes
LEFT- & PAVM'T. - RIGHT	1.0'	1.5'
TO	EDGE PAVEMENT	
S.L.M.	91+83 TO SOUTH POINT "A"	



Note: Origin of points unknown
 May or may not be on E of SR#101
 & or Sec. Line

Fd. RR. Spk. 1" + below surface
 Set P.K. & washer on surface
 1.5 RT. & PAVM'T. 11-14-83
 RECORD

Re-Set P.K./washer at
 Both Points 10-1-92



Fd. RR. Spk. 1" + below surface
 Set P.K. & washer on surface
 1.5 RT. & PAVM'T. RECORD 11-14-83

County Sandusky S.R. # 101

Township Green Creek

Section 24 & 25

T1N, R16E

Personnel Cronin

Ripple

Geyman

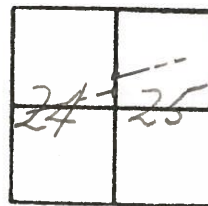
Barbour

#4

Date 11/14/82

Weather sunny - windy

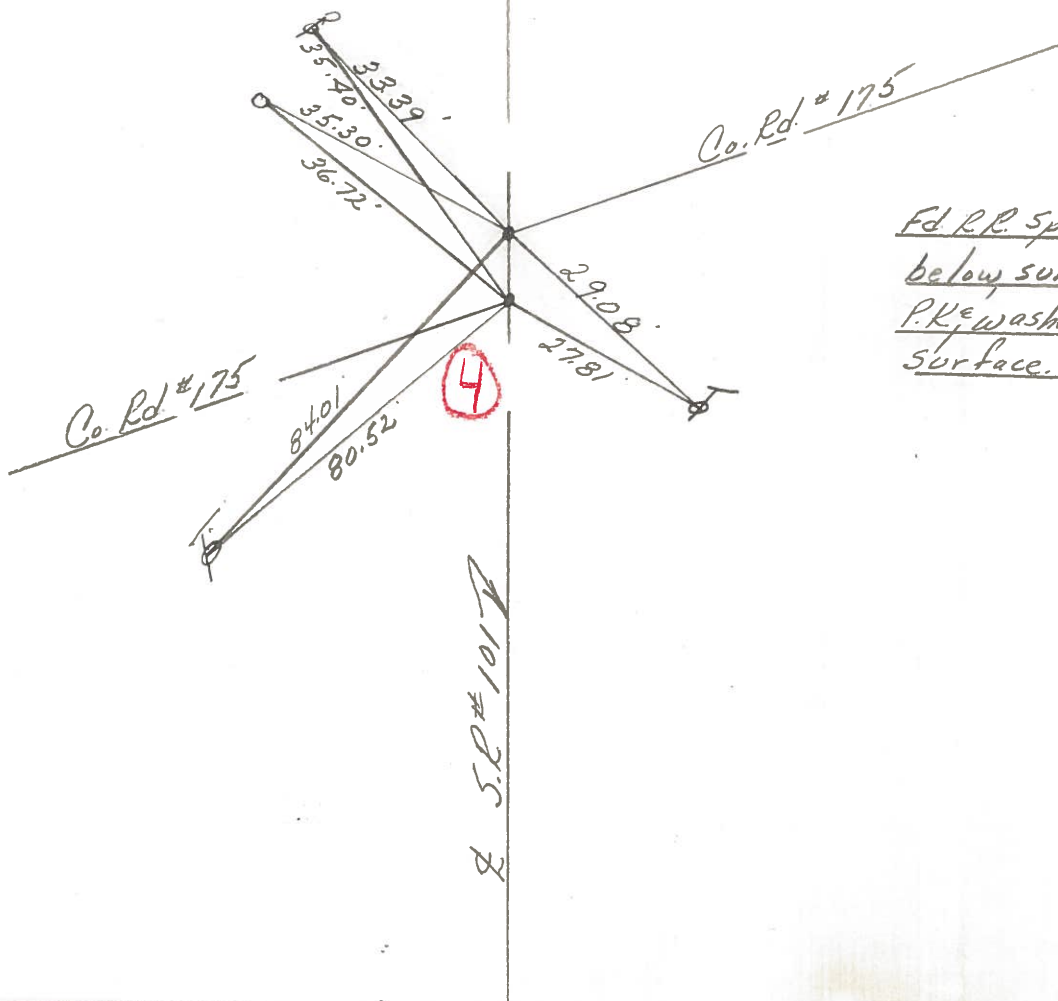
Temp. 42°



Note: Origin of points unknown
May or Maynot be on E of S.R.#101
E or Section Line



Fd. R.R. spike 1" below surface. Set
P.K. & washer on surface. 1 Rt. & Point.



Fd R.R. Spike 1" below surface. Set
P.K. & washer on surface. 1.5 Rt. & Point.

PERSONNEL TITLE PERSONNEL TITLE

Schneider
Mosser
Barbour
Potts

COUNTY Sandusky DATE Feb. 29, 1968

S. R. # 101 WEATHER

SEC. Sen. San. Co. Line North TEMP.

DESCRIPTION Ties for Contra Points JOB NO.

LEFT CENTER LINE RIGHT

