

O.D.O.T. DISTRICT 2 SURVEY OFFICE (USE ONLY)

PERSONNEL

REFERENCE NO. 7 D

SHEET 13 OF 13

NOTES SCHNEIDER

DATE 7/26/72

ROUTE SR 101

H.C. MOSSER

WEATHER CLOUDY

COUNTY SANDUSKY

R.C. BARBOUR

TEMP. 75°

TOWNSHIP GREEN CREEK

GEYMAN

SECTION 14

DWG BY NIESE

PID \_\_\_\_\_

T 4 N R 16 E

TYPE MONUMENT P.K. NAIL

~~ON SURFACE~~ - BELOW 1 1/2"

OFFSET  $\phi$  PAVEMENT ON LT : RT

- TO - EDGE PAVEMENT

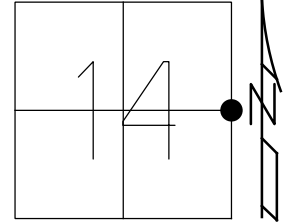
STATION: 192+52.59

HORZ. DATUM: NAD83 OH N 3401

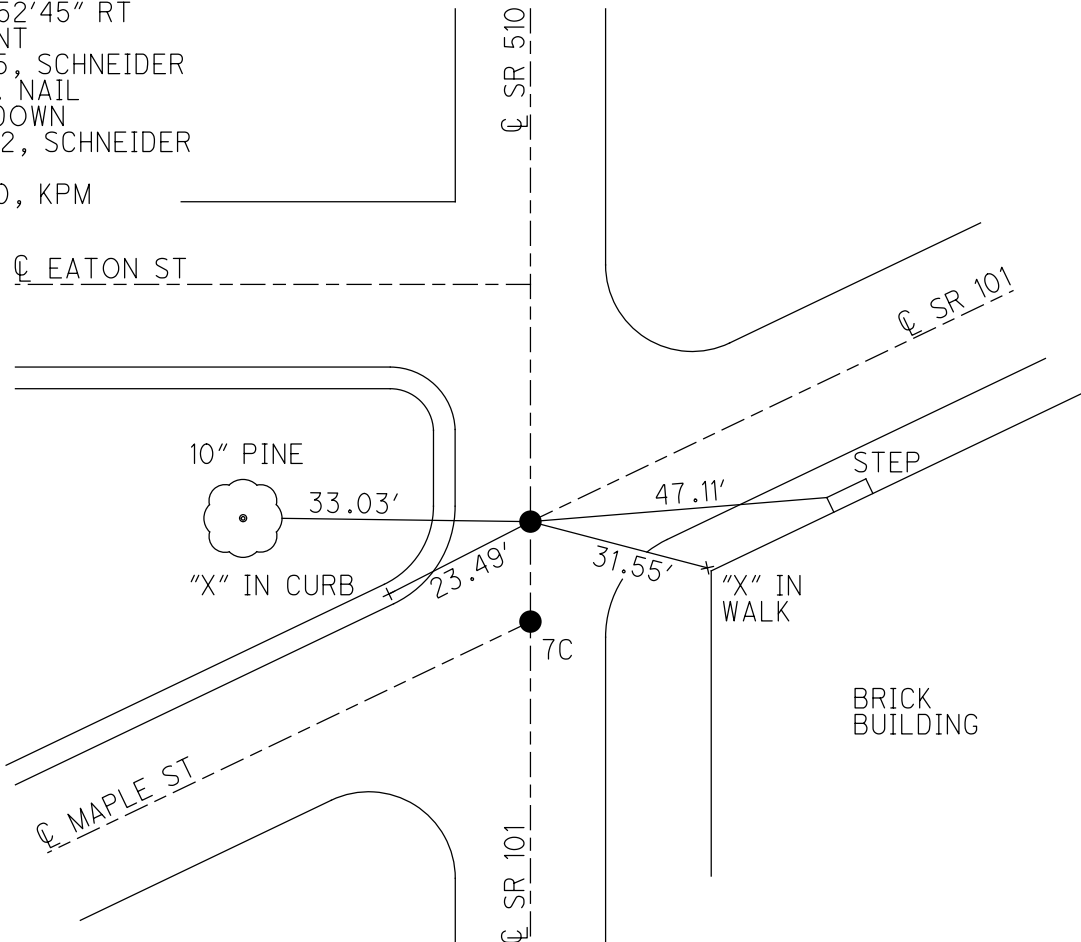
GEOID: NAVD88 2007

GRID: NORTHING: 597894.430

EASTING: 1838041.771



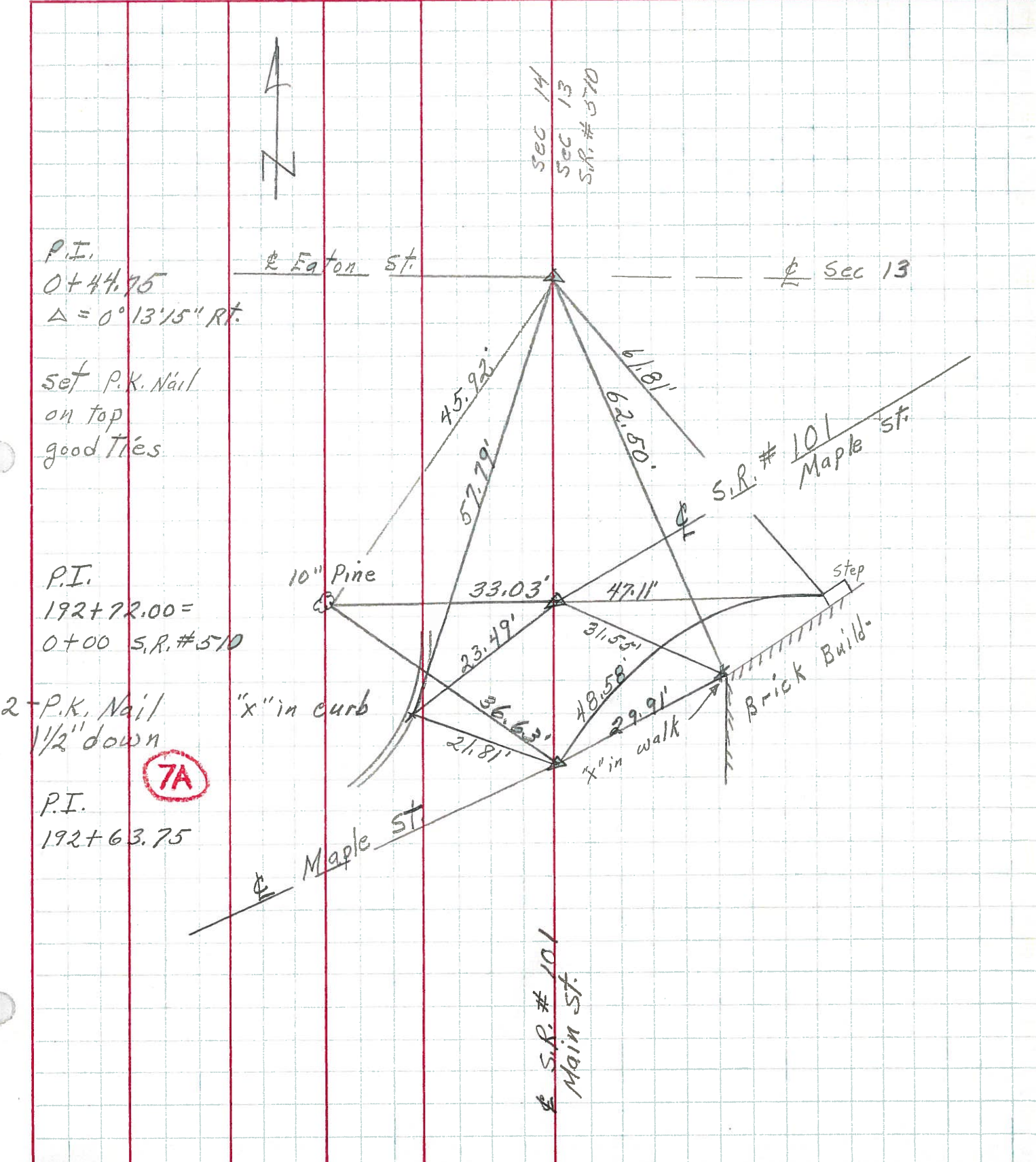
RECORD: P.I.  
 STA 192+72  
 SR 510 STA 0+00  
 $\Delta = 50^{\circ}52'45''$  RT  
 FD POINT  
 1/25/65, SCHNEIDER  
 FD P.K. NAIL  
 1-1/2" DOWN  
 7/26/72, SCHNEIDER  
 CL2  
 8/24/10, KPM



PERSONNEL	TITLE	PERSONNEL	TITLE
Schneider	_____	_____	_____
Mosser	_____	_____	_____
Barbour	_____	_____	_____
Geyman	_____	_____	_____

COUNTY Sandusky DATE 7-26-72  
 S. R. 101 WEATHER cloudy  
 SEC. 3.65 (Clyde) TEMP. 75°

DESCRIPTION \_\_\_\_\_ LEFT \_\_\_\_\_ CENTER LINE \_\_\_\_\_ RIGHT \_\_\_\_\_ JOB NO. \_\_\_\_\_



PERSONNEL TITLE PERSONNEL TITLE

COUNTY Sandusky DATE 1/25/65

Schneider

Mosser

S. R. #101 (Clyde) WEATHER overcast

I-H 44

Cronin

Barbour.

SEC. \_\_\_\_\_ TEMP. 32°

DESCRIPTION Ties for Control Points LEFT CENTER LINE RIGHT JOB NO. \_\_\_\_\_

