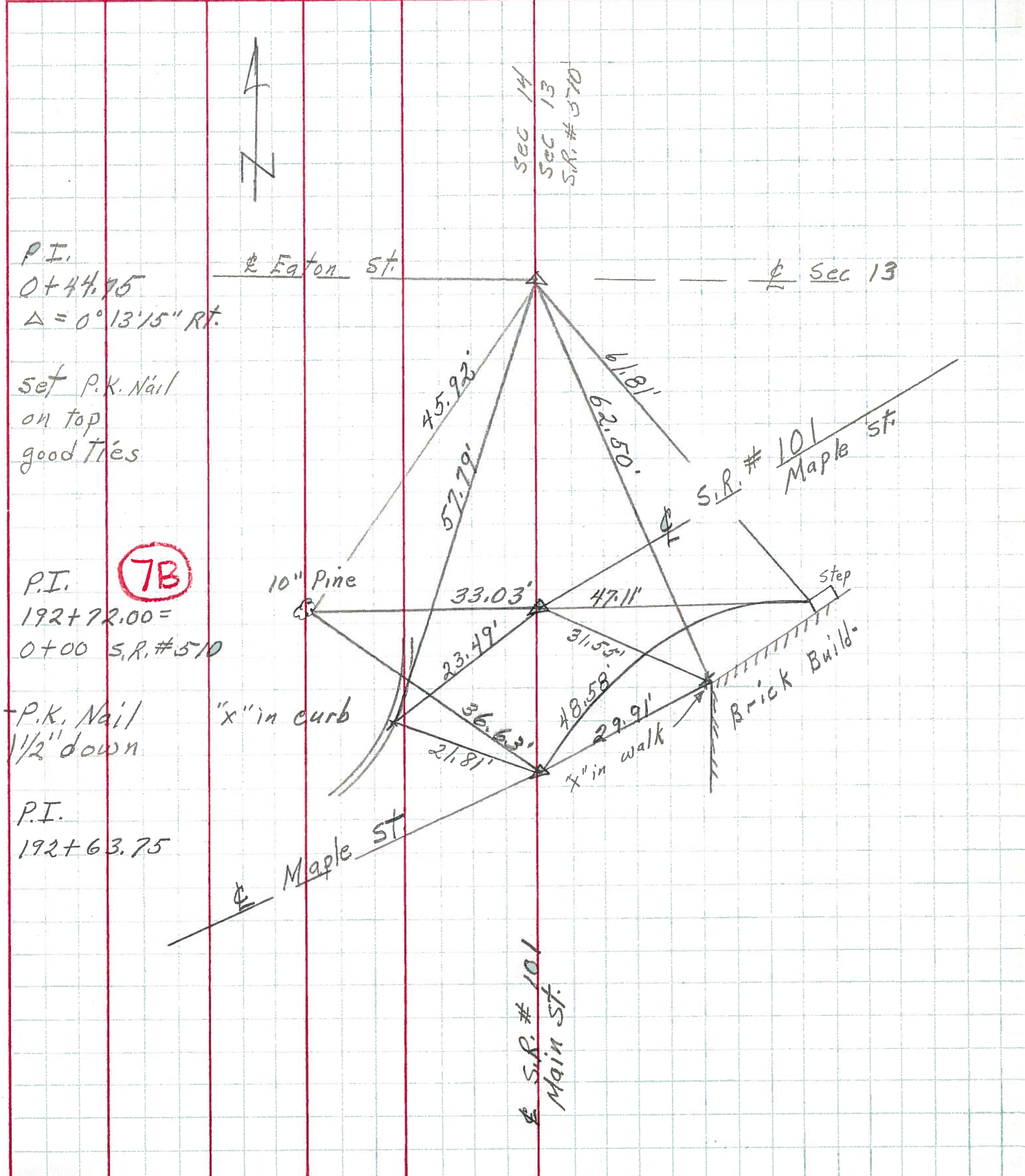


PERSONNEL	TITLE	PERSONNEL	TITLE	COUNTY	DATE
Schneider				Sandusky	7-26-72
Mosser				S. R. 101	WEATHER cloudy
Barbour				SEC. 3.65 (Clyde)	TEMP. 75°
Geyman					

DESCRIPTION	LEFT	CENTER LINE	RIGHT	JOB NO.
-------------	------	-------------	-------	---------



PERSONNEL TITLE PERSONNEL TITLE

COUNTY Sandusky DATE 1/25/65

Schneider

S. R. #101 (Clyde) WEATHER overcast

Mosser

SEC. _____ TEMP. 32°

Cronin

Barbour.

DESCRIPTION Ties for Control Points LEFT CENTER LINE RIGHT JOB NO. _____

I-#44

8

Sta. 205+12.34

All measurements plumbed



10" pine

0+44.75 West 1/4 Part of Sec. 13

All measurements plumbed

8" pine

P.I. Δ = 50°52'45" Rt.

192+72 7B

192+63.75 Maple St. S.W.

7A

brick bldg. 0.5' up from walk

0.5' up from walk brick bldg.

