

O.D.O.T. DISTRICT 2 SURVEY OFFICE (USE ONLY)

PERSONNEL _____

REFERENCE NO. 8

SHEET 1 OF 39

NOTES WESTFALL

DATE 6/27/13

ROUTE SR 101

H.C. ROUSOS

WEATHER CLEAR

COUNTY SANDUSKY

R.C. HOMAN

TEMP. 70°

TOWNSHIP GREEN CREEK

SECTION 13

DWG BY NIESE PID _____

T 4 N R 6 E

TYPE MONUMENT MAG NAIL

ON SURFACE - ~~BELOW~~ ON

OFFSET CL PAVEMENT ON LT : RT

36.6' TO LT EDGE PAVEMENT

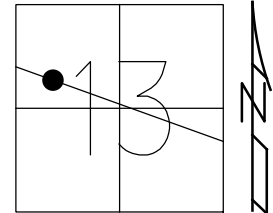
STATION: 204+94.38

HORZ.DATUM: _____

GEOID: _____

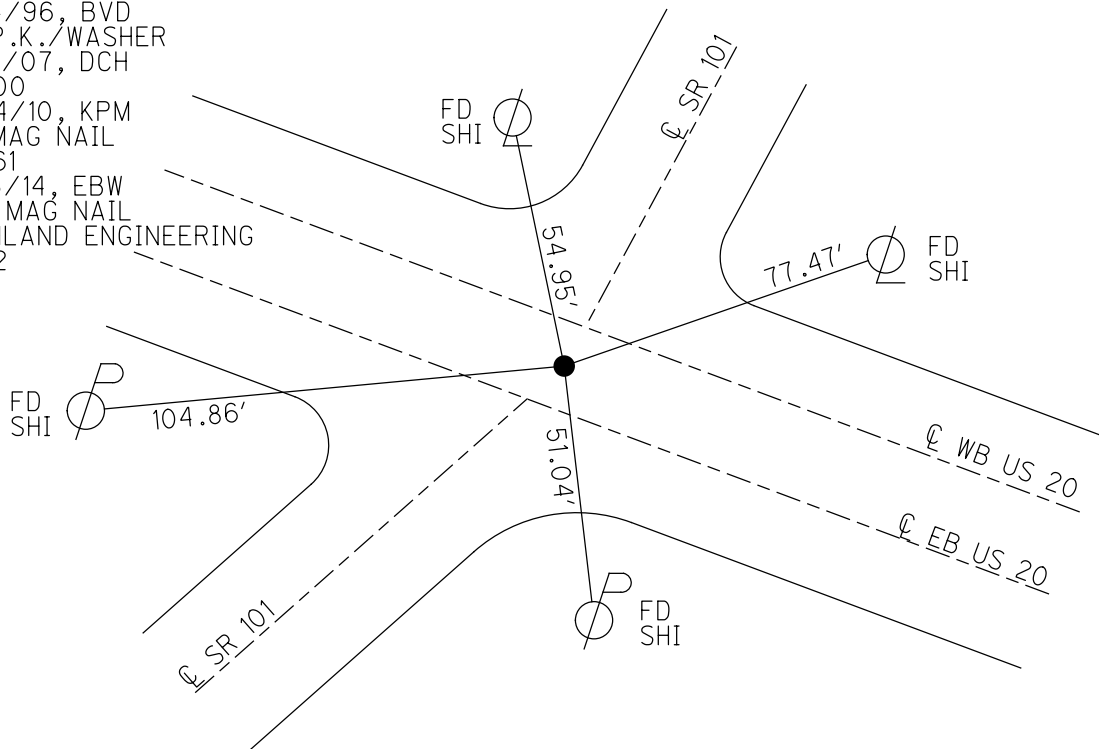
GRID: NORTHING: 598670.918

EASTING: 1839011.073



RECORD:
 STA 205+12.34
 FD POINT
 1/25/65, SCHNEIDER
 FD SM.R.R.SPIKE
 7/29/96, MB
 SET P.K./WASHER
 10/4/96, BVD
 FD P.K./WASHER
 5/21/07, DCH
 CL200
 8/24/10, KPM
 FD MAG NAIL
 REF61
 11/13/14, EBW
 SET MAG NAIL
 RICHLAND ENGINEERING
 8/22

NOTE:
 US-20 REF61



O.D.O.T. DISTRICT 2 SURVEY OFFICE (USE ONLY)

PERSONNEL _____

REFERENCE NO. 8

SHEET 1 OF 39

NOTES WESTFALL

DATE 6/27/13

ROUTE SR 101

H.C. ROUSOS

WEATHER CLEAR

COUNTY SANDUSKY

R.C. HOMAN

TEMP. 70°

TOWNSHIP GREEN CREEK

SECTION 13

DWG BY NIESE

PID _____

T 4 N R 6 E

TYPE MONUMENT MAG NAIL

ON SURFACE - ~~BELOW~~ ON

OFFSET Q PAVEMENT ON LT : RT

36.6' TO LT EDGE PAVEMENT

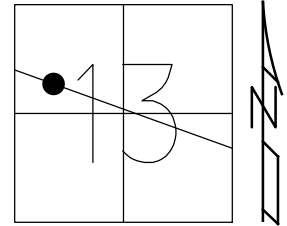
STATION: 204+94.38

HORZ.DATUM: _____

GEOID: _____

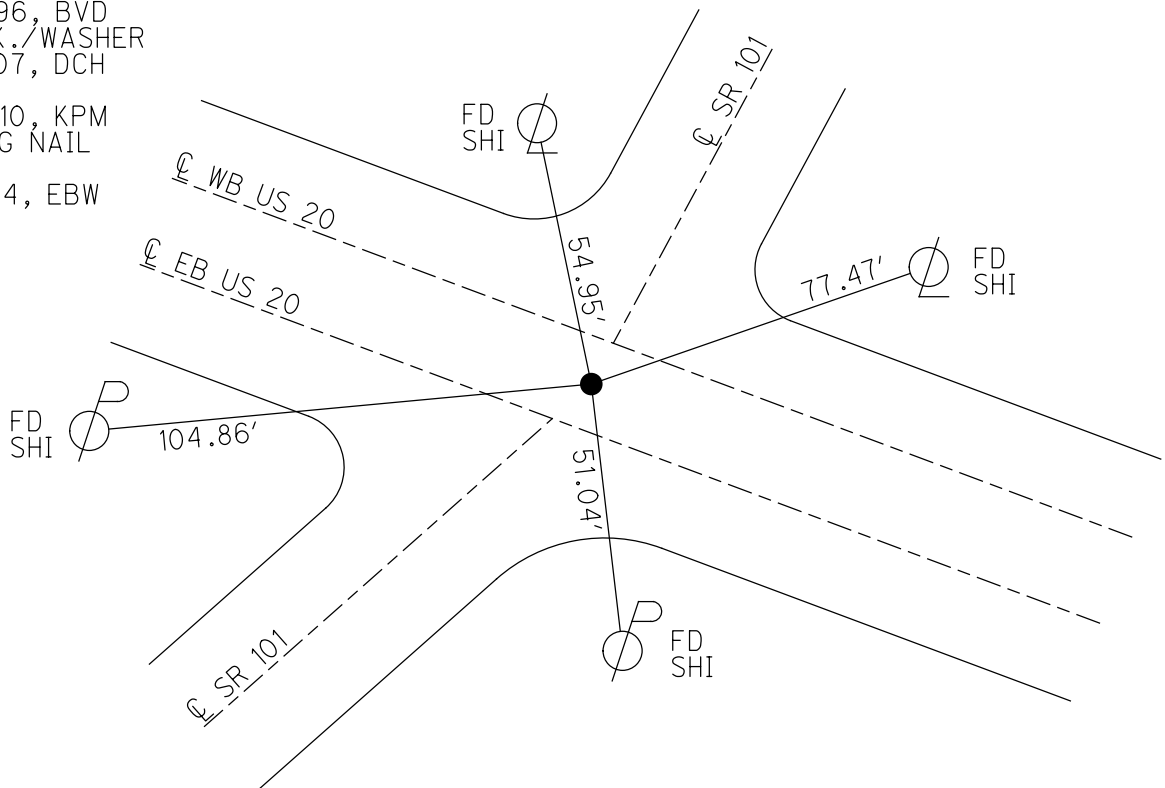
GRID: NORTHING: 598670.784

EASTING: 1839011.014



RECORD:
 STA 205+12.34
 FD POINT
 1/25/65, SCHNEIDER
 FD SM.R.R.SPIKE
 7/29/96, MB
 SET P.K./WASHER
 10/4/96, BVD
 FD P.K./WASHER
 5/21/07, DCH
 CL200
 8/24/10, KPM
 FD MAG NAIL
 REF61
 11/13/14, EBW

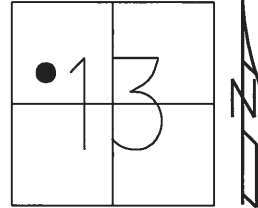
NOTE:
 US-20 REF61



O.D.O.T. DISTRICT 2 SURVEY OFFICE (USE ONLY)

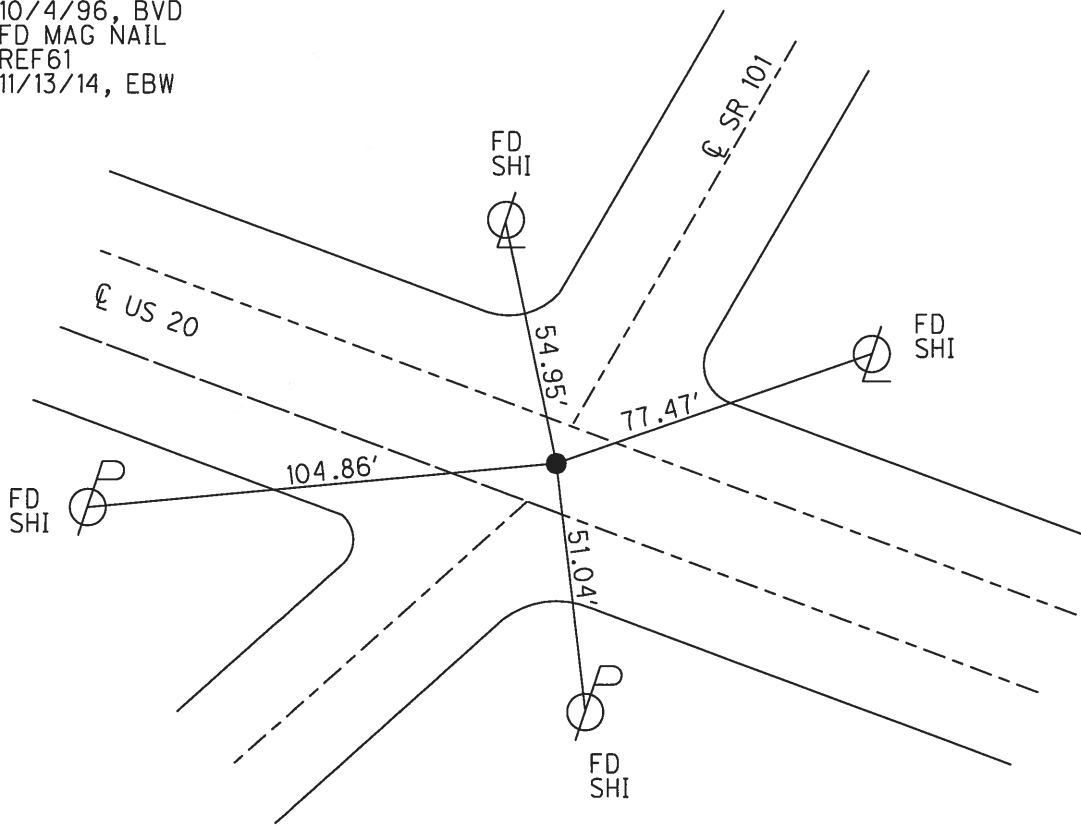
PERSONNEL _____ REFERENCE NO. 8 SHEET 1 OF 39
 NOTES WESTFALL DATE 6/27/13 ROUTE SR 20
 H.C. ROUSOS WEATHER CLEAR COUNTY SANDUSKY
 R.C. HOMAN TEMP. 70° TOWNSHIP GREEN CREEK
 SECTION 13
 T 4 N R 16 E

TYPE MONUMENT MAG NAIL
 ON SURFACE - ~~BELOW~~ ON
 LEFT - ☉ PAV'T - RIGHT ON
36.6' TO LT EDGE PAVEMENT
 S.L.M. 204+86.4
 Grid: Northing: 598670.784 Easting: 1839011.014



NOTE: REF 61 US 20

RECORD:
 FD SM.R.R.SPIKE
 7/29/96, MB
 SET P.K./WASHER
 10/4/96, BVD
 FD MAG NAIL
 REF61
 11/13/14, EBW



PERSONNEL TITLE PERSONNEL TITLE

COUNTY Sandusky DATE 1/25/65

Schneider

Nasser

S. R. #101 (dlyde) WEATHER overcast

I-144

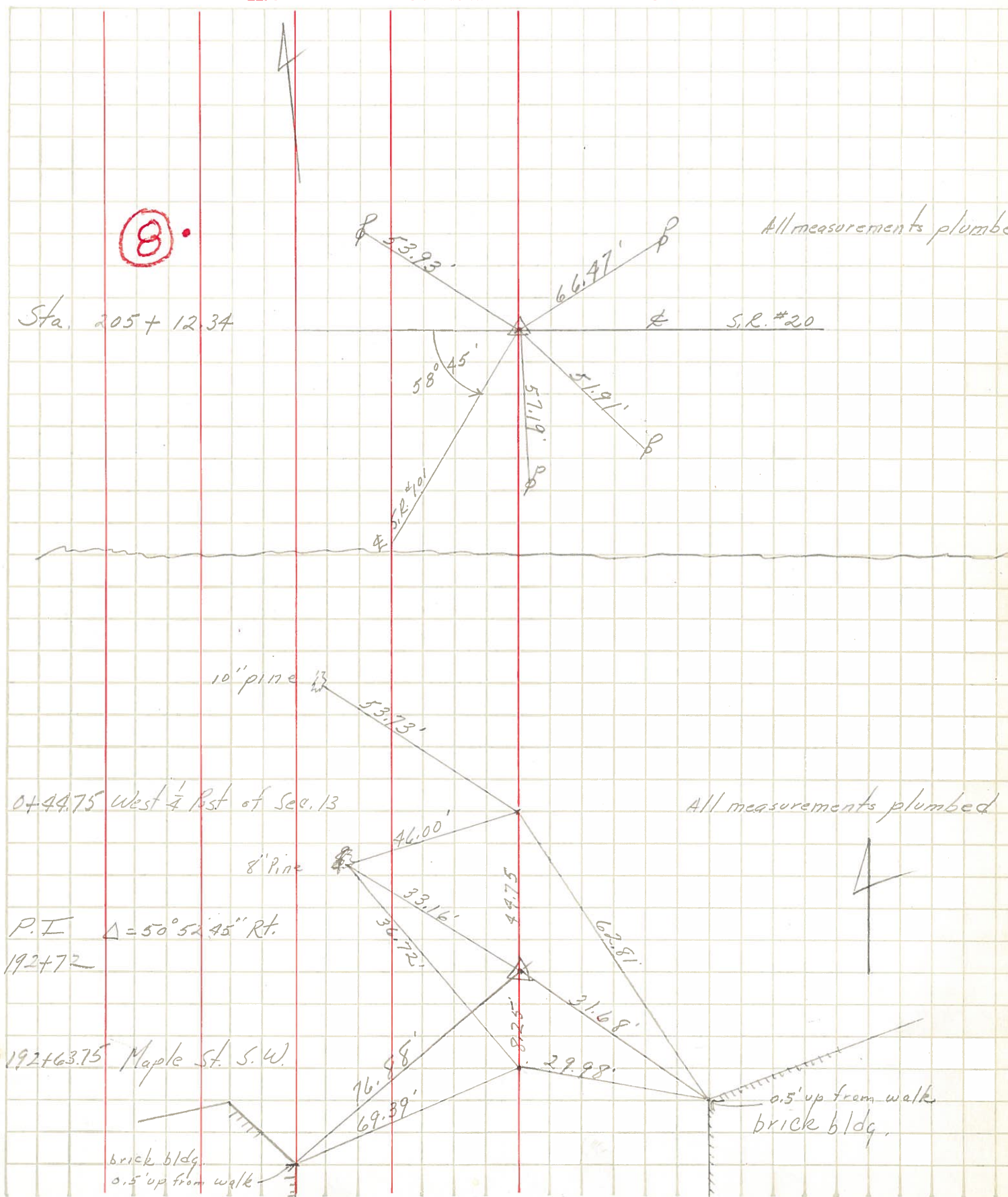
Cronin

Barbour.

SEC. _____ TEMP. 32°

DESCRIPTION Ties for Control Points JOB NO. _____

LEFT CENTER LINE RIGHT



PERSONNEL	TITLE	PERSONNEL	TITLE
KrabiLL			
Kowaleski			
Geyman			
Bruggeman			

COUNTY Sandusky DATE FEB. 5-1964
 S. R. # 101 WEATHER _____
 SEC. Q, D, P, T, G, & U. TEMP. _____

DESCRIPTION From U.S. #20 North to Erie Co. Line JOB NO. _____

