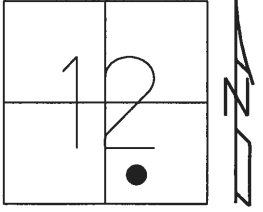


O.D.O.T. DISTRICT 2 SURVEY OFFICE (USE ONLY)

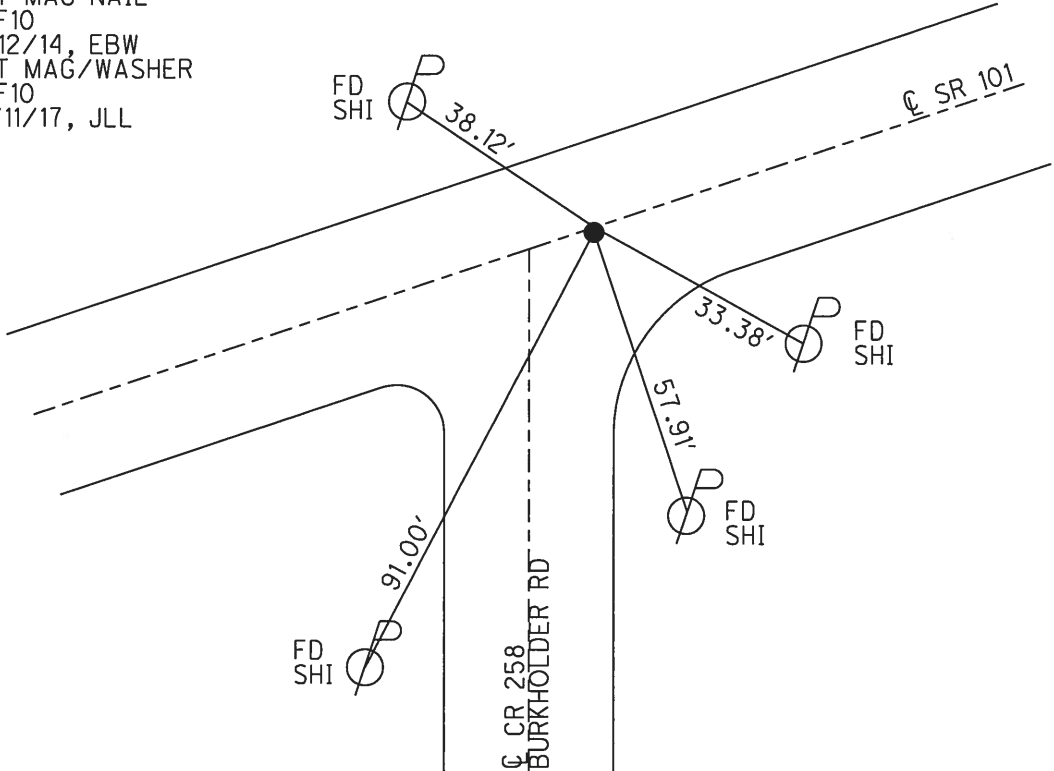
PERSONNEL \_\_\_\_\_ REFERENCE NO. 10 SHEET 7 OF 39  
 NOTES LEU DATE 12/11/17 ROUTE SR 101  
 H.C. LEU WEATHER CLOUDY COUNTY SANDUSKY  
 R.C. FARKAS TEMP. 31° TOWNSHIP GREEN CREEK  
 SECTION 12  
 T 4 N R 16 E

TYPE MONUMENT MAG/WASHER  
 ON SURFACE - ~~BELOW~~ ON  
 LEFT - ☉ PAV'T - RIGHT ON  
10.2' TO LT EDGE PAVEMENT  
 S.L.M. 239+88.82



Grid: Northing: 601186.852 Easting: 1841265.388

RECORD:  
 FD P.K.NAIL  
 ATOP P.K.NAIL  
 ATOP R.R.SPIKE  
 10/14/17, CRONIN  
 FD P.K./WASHER  
 8/4/97, CL  
 SET P.K./WASHER  
 8/21/97, SAH  
 SET MAG NAIL  
 REF10  
 11/12/14, EBW  
 SET MAG/WASHER  
 REF10  
 12/11/17, JLL



O.D.O.T. DISTRICT 2 SURVEY OFFICE

PERSONNEL \_\_\_\_\_

REFERENCE NO. \_\_\_\_\_

SHEET 1 OF 37

NOTES Moser

H.C. CORDES

DATE 8-4-07

ROUTE 101

R.C. LOEHRKE

WEATHER Cloudy

COUNTY SANDUSKY

TEMP. +78°F

TOWNSHIP GREEN CREEK

SECTION 12

T4 N R 17 E

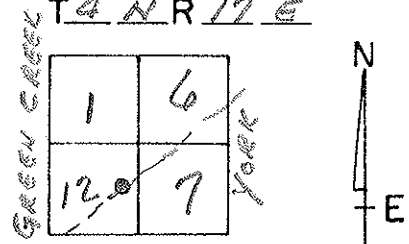
TYPE MONUMENT PK/WASHER

ON SURFACE - BELOW YES

LEFT -  $\odot$  PAV'T. - RIGHT YES

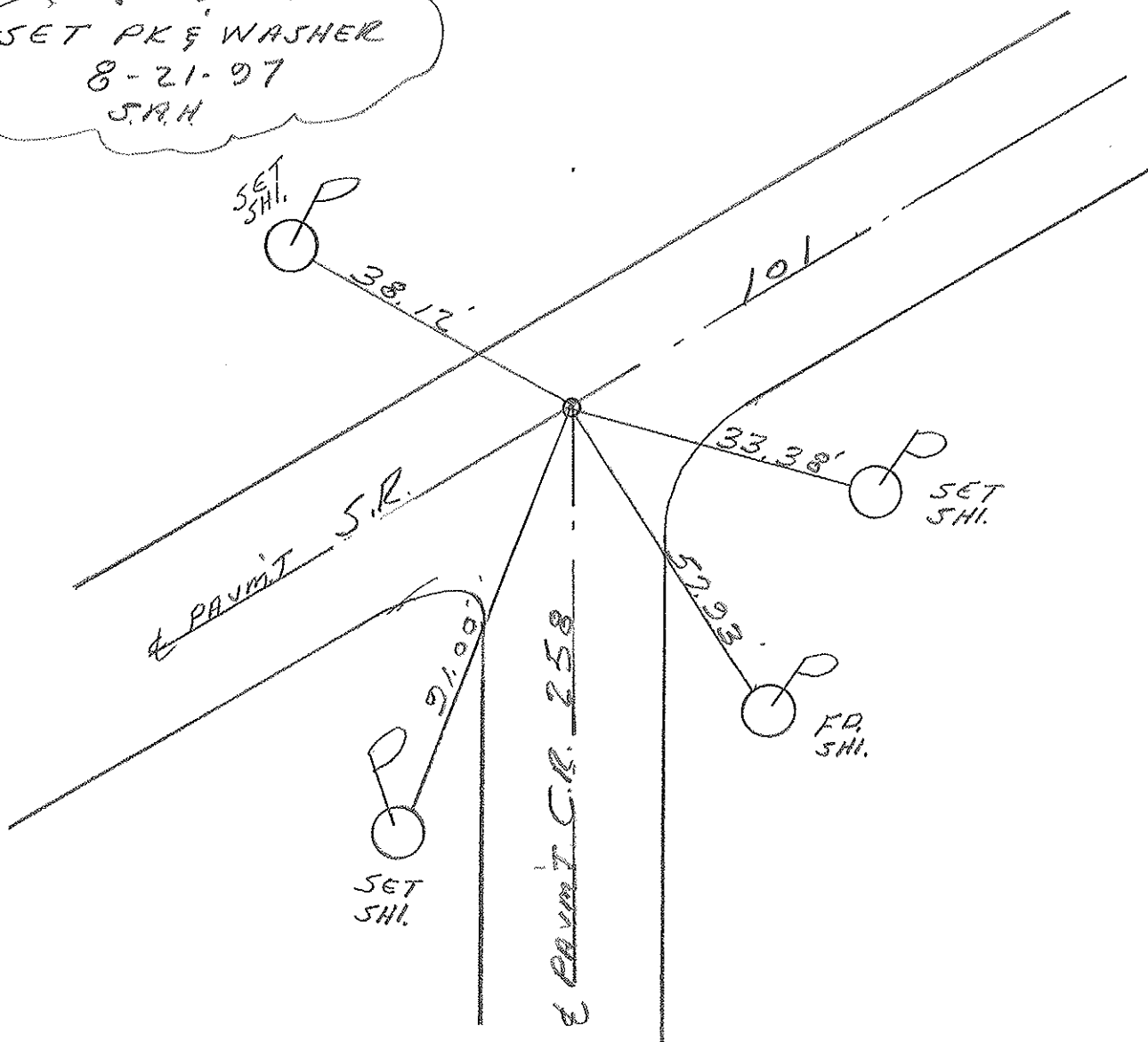
10.2 TO LT. EDGE PAVEMENT

S.L.M. 7+322



ORIGIN UNKNOWN

SET PK & WASHER  
8-21-07  
J.A.H.



# O.D.O.T. DISTRICT 2 SURVEY OFFICE

PERSONNEL \_\_\_\_\_

REFERENCE NO. 10

SHEET 2 OF \_\_\_\_\_

NOTES Cronin

H.C. Ripple

R.C. Geyman

DATE 10/14/87

WEATHER sunny

TEMP. 52°

ROUTE #101

COUNTY Sandusky

TOWNSHIP Green Creek

SECTION 12

T. N R. 16 E

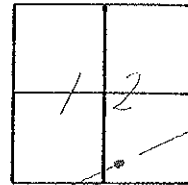
TYPE MONUMENT PK Launcher

ON SURFACE - BELOW on surface

LEFT - Q PAV'T. - RIGHT & Pavt.

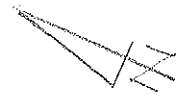
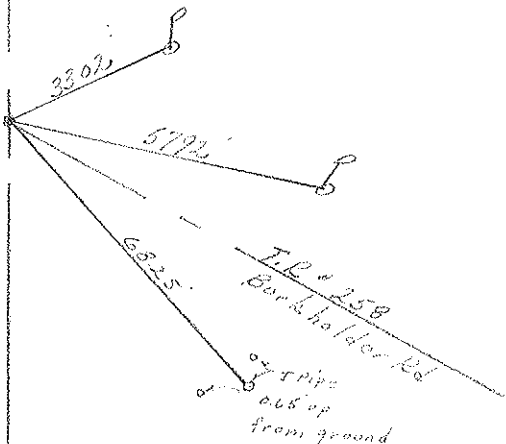
TO \_\_\_\_\_ EDGE PAVEMENT

S.L.M. \_\_\_\_\_



PK & RR spike  
below surface

S.P. #1017  
Couch, 79



PERSONNEL TITLE PERSONNEL TITLE

Schneider  
Barbour  
Potts

COUNTY Sandusky DATE March 4, 1968

S. R. # 101 WEATHER Fair

SEC. N.E. of C/4de TEMP. 20°

DESCRIPTION Ties for Control Points JOB NO.

