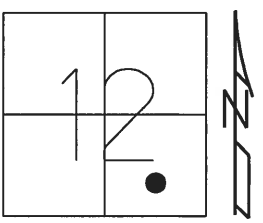


O.D.O.T. DISTRICT 2 SURVEY OFFICE (USE ONLY)

PERSONNEL \_\_\_\_\_ REFERENCE NO. 10 B SHEET 9 OF 39  
 NOTES LEU DATE 12/12/17 ROUTE SR 101  
 H.C. LEU WEATHER CLOUDY COUNTY SANDUSKY  
 R.C. FARKAS TEMP. 31° TOWNSHIP GREEN CREEK  
 SECTION 12  
 T 4 N R 16 E

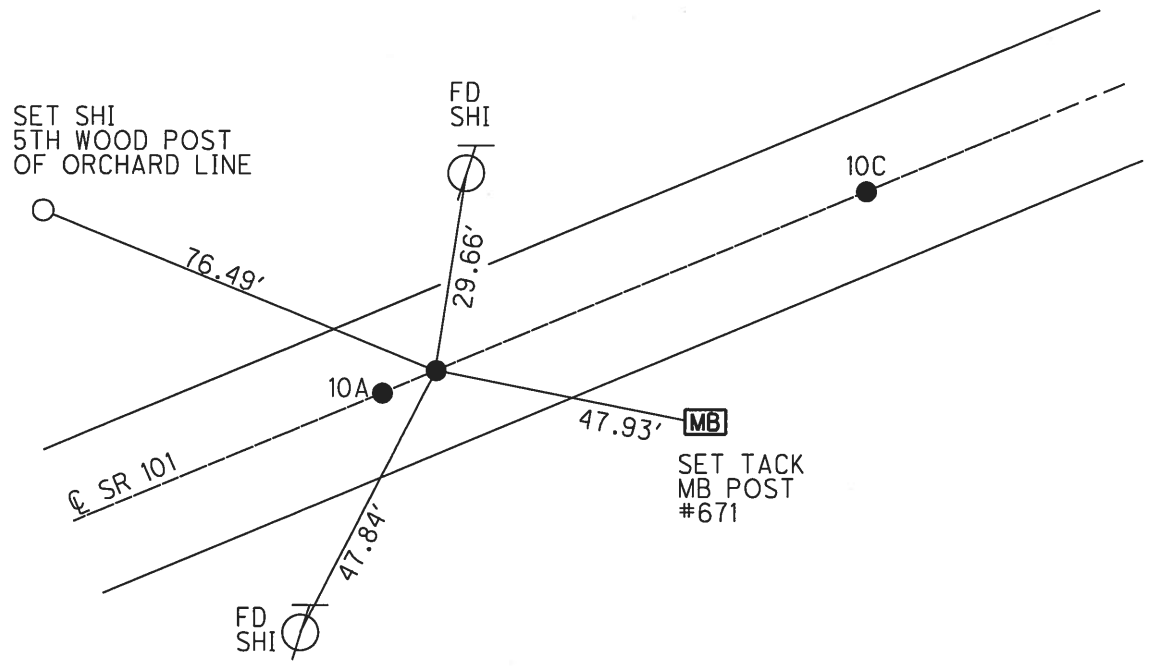
TYPE MONUMENT P.K.NAIL  
 ON SURFACE - ~~BELOW~~ ON  
~~LEFT~~ - CL PAV'T - RIGHT 0.4'  
9.8' TO RT EDGE PAVEMENT  
 S.L.M. 246+84.50



Grid: Northing: 601470.422 Easting: 1841900.743

RECORD:  
 UNKNOWN ORIGIN  
 FD LG.R.R.SPIKE  
 0.2' DOWN  
 8/11/97, SAH  
 SET P.K./WASHER  
 8/21/97, SAH  
 FD P.K.NAIL  
 REFB10  
 11/12/14, EBW  
 SET MAG/WASHER  
 12/12/17, JLL

DIST.  
 10A-10B= 4.94'  
 10B-10C= 92.36'



# O.D.O.T. DISTRICT 2 SURVEY OFFICE

PERSONNEL \_\_\_\_\_

REFERENCE NO. \_\_\_\_\_

SHEET 2 OF 37

NOTES Huss

H.C. Van Ruseen

R.C. Huss

DATE 8-11-97

WEATHER cldy - Fair

TEMP. +72° F

ROUTE 101

COUNTY Saunderby

TOWNSHIP Greenbush

SECTION 12

T4 N R 12 E

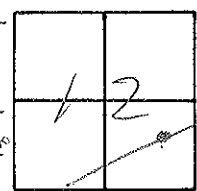
TYPE MONUMENT Ⓐ = PK/W Ⓜ = Lg RR. Spk. Ⓞ = PK/W

ON SURFACE - BELOW Ⓐ Surface Ⓜ .2 below Ⓞ Surface

LEFT - Ⓐ .3 Rt. E Ⓜ .4 Rt E Ⓞ .4 Rt E

Ⓐ 9.8' TO Rt. EDGE PAVEMENT Ⓜ 9.8' to Rt EOP Ⓞ 9.7' to Rt. EOP

S.L. PK. Ⓐ = 7+534 Ⓜ = 7+539 Ⓞ = 7+564



Set PK/W at  
Pts. A-B-C  
8-21-97 SHH

ALL POINTS - UNKNOWN ORIGINAL

