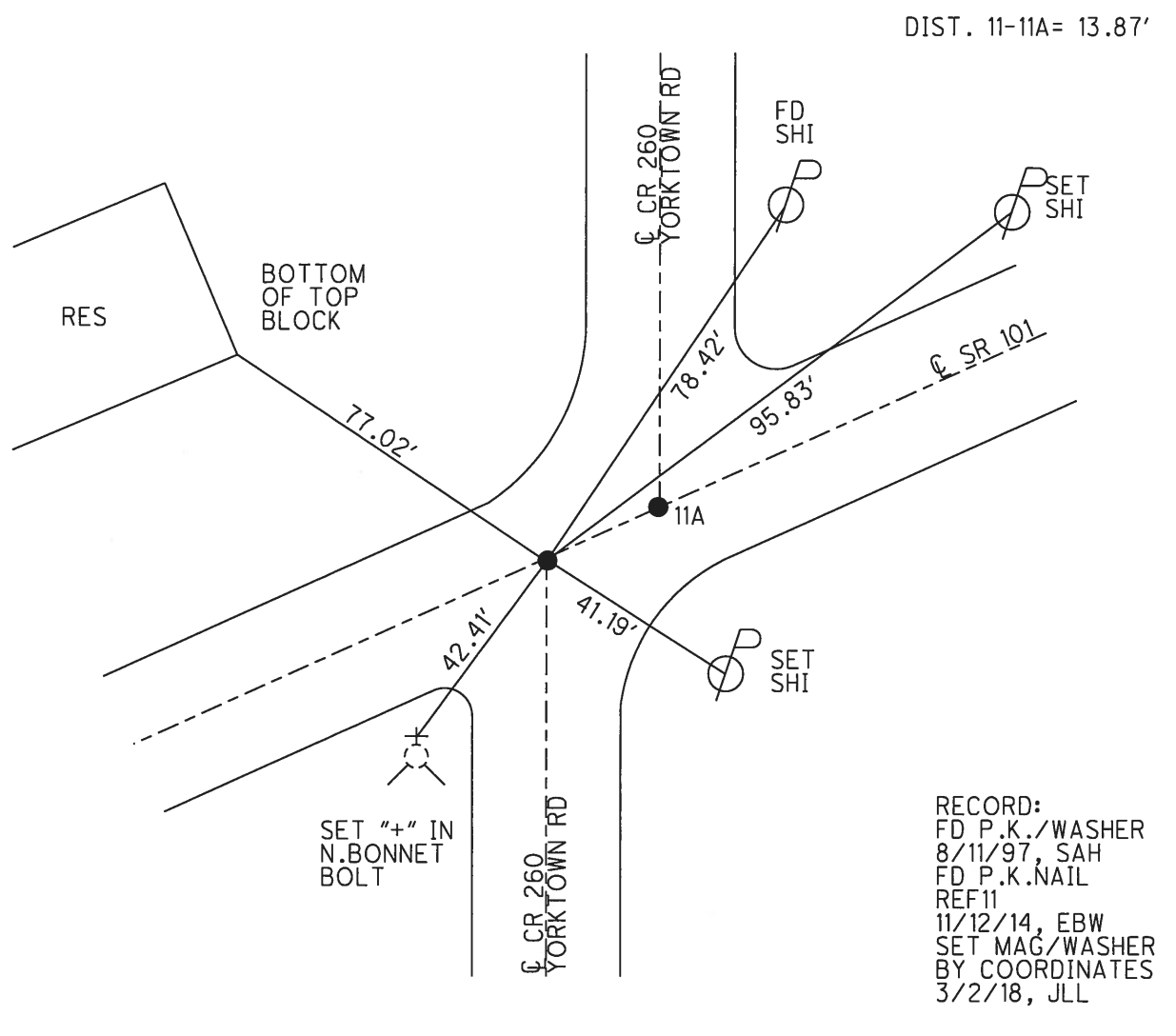
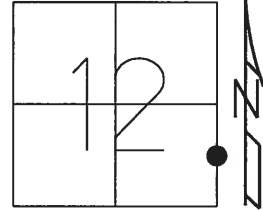


O.D.O.T. DISTRICT 2 SURVEY OFFICE (USE ONLY)

PERSONNEL \_\_\_\_\_ REFERENCE NO. 11 SHEET 13 OF 39  
 NOTES AUBLE DATE 3/2/18 ROUTE SR 101  
 H.C. LEU WEATHER CLOUDY COUNTY SANDUSKY  
 R.C. AUBLE TEMP. 33° TOWNSHIP GREEN CREEK  
 SECTION 12  
 T 4 N R 16 E

TYPE MONUMENT P.K./WASHER  
 ON SURFACE - ~~BELOW~~ ON \_\_\_\_\_  
~~LEFT~~ - Q PAV'T - RIGHT 1.5'  
 - TO - EDGE PAVEMENT  
 S.L.M. 263+44.17  
 Grid: Northing: 602147.399 Easting: 1843416.052



# O.D.O.T. DISTRICT 2 SURVEY OFFICE

PERSONNEL \_\_\_\_\_

REFERENCE NO. 11

SHEET 4 OF 37

NOTES Hugg

H.C. Van Nuys

R.C. Moser

DATE 8-11-97

WEATHER Clay. Rain

TEMP. 72°F

ROUTE 101

COUNTY Sandusky

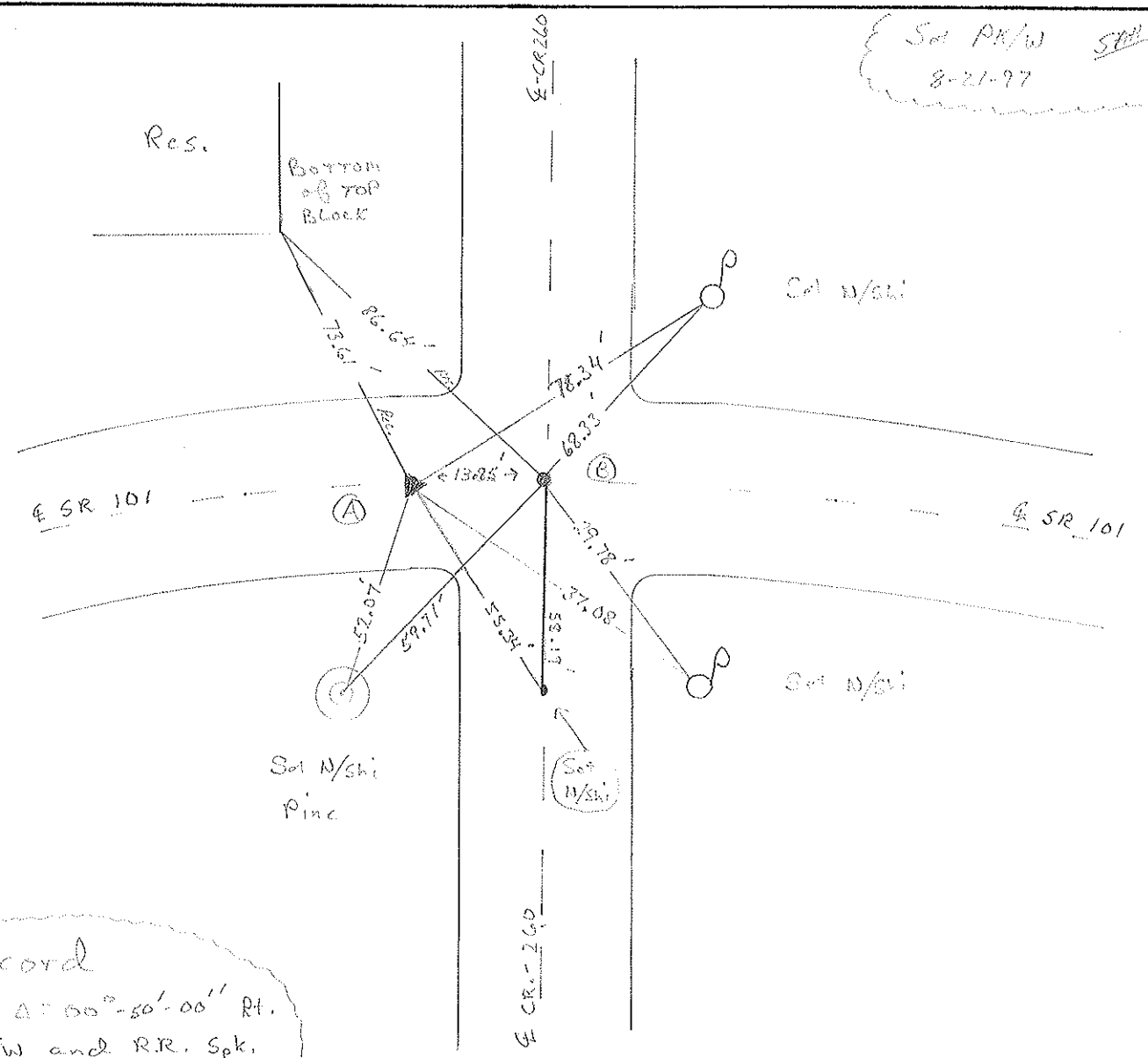
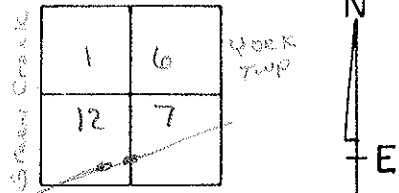
TOWNSHIP Green Creek

SECTION 12

T 4 N R 16 E

TYPE MONUMENT (A) = PK/W (B) = PK/W  
 ON SURFACE - ~~BELOW~~ (A), (B) On surface  
~~LEFT~~ C. PAV'T. - RIGHT (A), (B) 1.6' Pt of E  
TO EDGE PAVEMENT

S.L. PK. Pt (A) = 21043.3 Pt (B) = 21047.5



*Set PK/W SR 101  
8-21-97*

*Record  
 PT. A = 00°-50'-00" Pt.  
 PK/W and RR. Spk.  
 below surface  
 26247 ± old sta. 58+52.17*

Resurfaced ~~road~~ 1997

### O.D.O.T. DISTRICT 2 SURVEY OFFICE

PERSONNEL \_\_\_\_\_

REFERENCE NO. 11

SHEET 3 OF \_\_\_\_\_

NOTES Cronin

H.C. Ripple

R.C. Geyman

DATE 10/14/87

WEATHER sunny

TEMP. 52°

ROUTE #101

COUNTY Sandusky

TOWNSHIP Green Creek

SECTION 12

T 4 N R 16 E

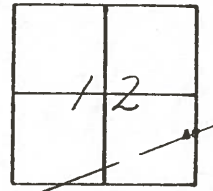
TYPE MONUMENT P.K. & washer

ON SURFACE - BELOW on surface

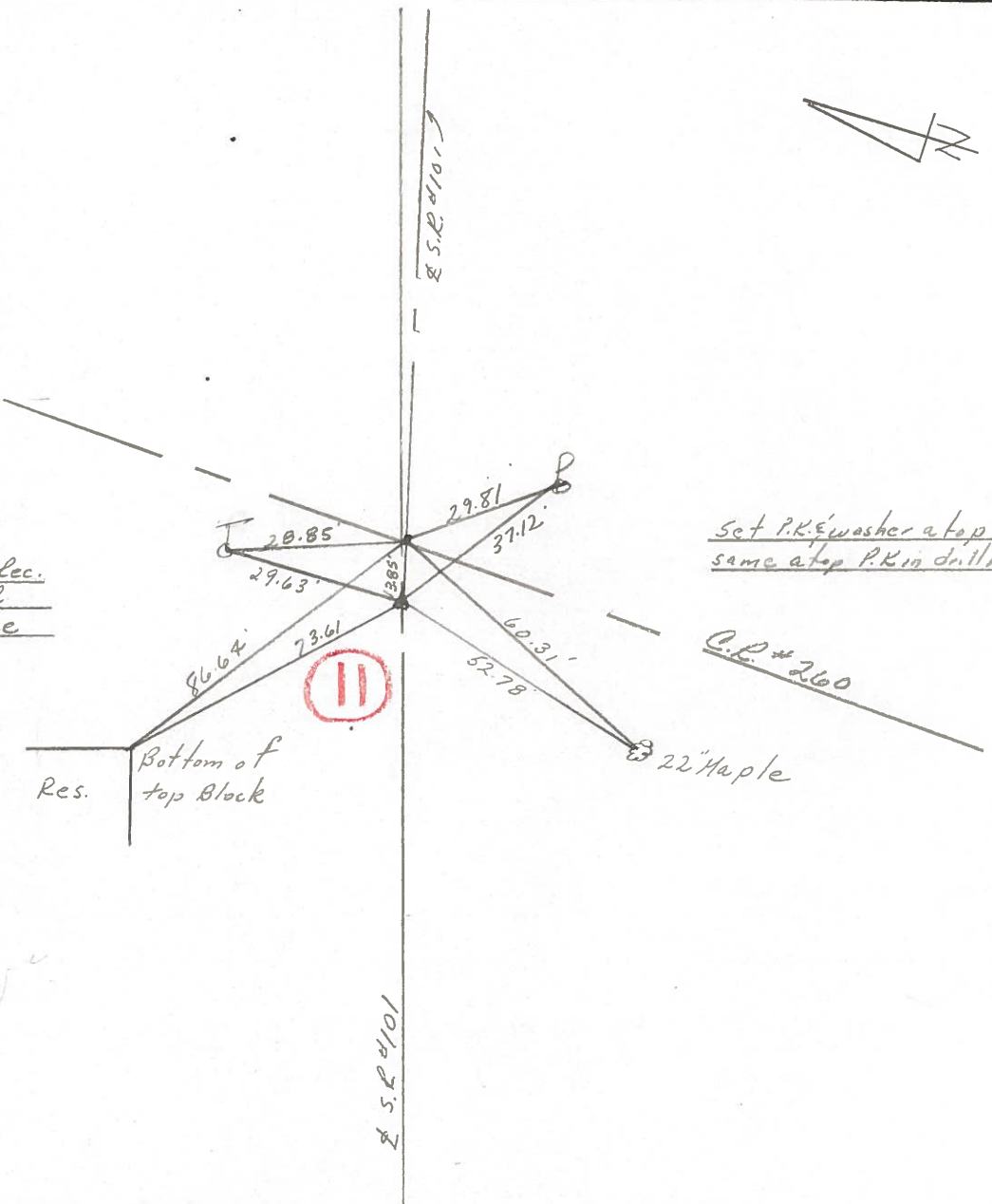
LEFT - CL PAV'T. - RIGHT 1.4' Lt. & Pav't.

TO EDGE PAVEMENT

S.L.M. 262+77±      old Sta. 58+52.17



P.I.  $\Delta = 00^{\circ}50'00''$  Lt. Rec.  
 P.K. & washer and R.R.  
 spike below surface



Set P.K. & washer at top  
 same at top P.K. in drill hole

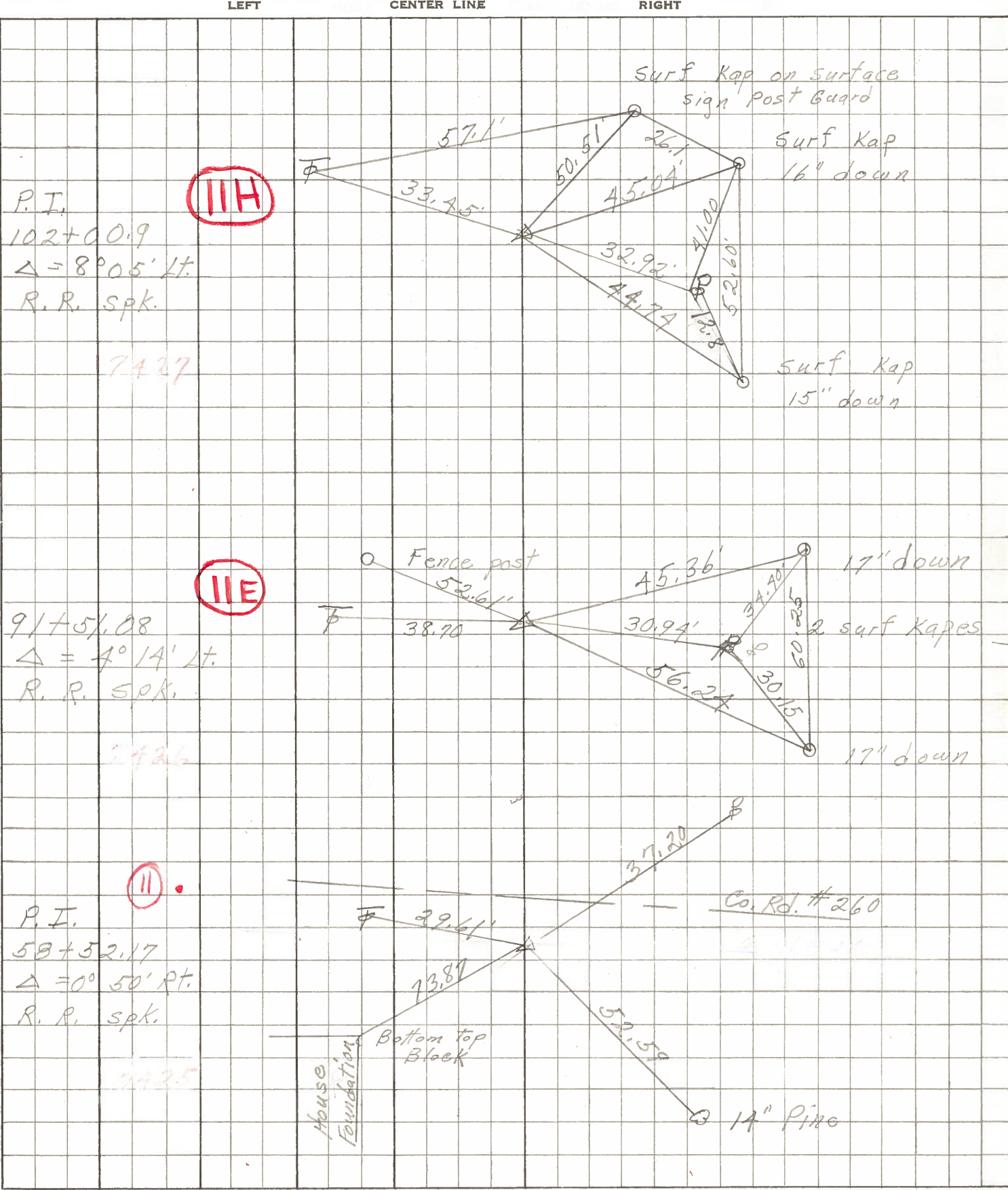
C.P. #260

Res. Bottom of top Block

22 Maple

C.S.P. #101

PERSONNEL TITLE PERSONNEL TITLE COUNTY Sandusky DATE March 1968  
 Schneider \_\_\_\_\_ Potts \_\_\_\_\_  
 Mosser \_\_\_\_\_ S. R. # 101 WEATHER \_\_\_\_\_  
 Barbour \_\_\_\_\_ SEC. N.E. of P. & C. TEMP. \_\_\_\_\_  
 Redding \_\_\_\_\_  
 DESCRIPTION Ties for Control Points JOB NO. \_\_\_\_\_



PERSONNEL TITLE PERSONNEL TITLE

KrabiLL  
Kowaleski  
Geyman  
Bruggeman

COUNTY Sandusky

DATE Feb. 5-1964

S. R. #101

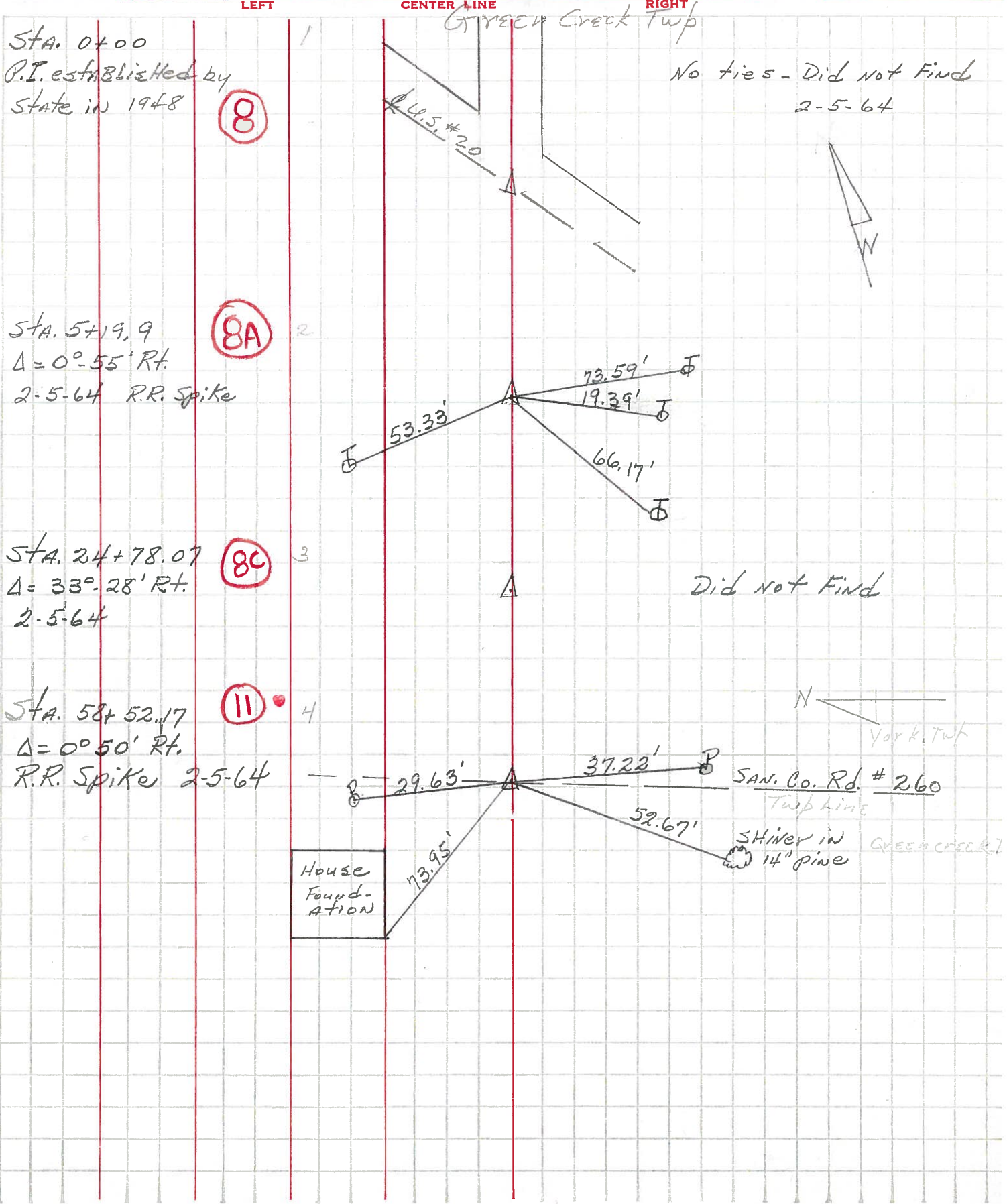
WEATHER

SEC. Q, D, P, T, G, & U.

TEMP.

DESCRIPTION From U.S. #20 North to Erie Co. Line

JOB NO.



Sta. 0+00  
P.I. established by  
State in 1948

(8)

Sta. 5+19.9  
 $\Delta = 0^\circ - 55' \text{ Rt.}$   
2-5-64 R.R. Spike

(8A)

Sta. 24+78.07  
 $\Delta = 33^\circ - 28' \text{ Rt.}$   
2-5-64

(8C)

Sta. 58+52.17  
 $\Delta = 0^\circ 50' \text{ Rt.}$   
R.R. Spike 2-5-64

(11)

No ties - Did not Find  
2-5-64

Did not Find

SAN. Co. Rd. # 260  
Twp line

SHIVER in  
14" pine  
Green Creek Twp

House  
Found-  
ation