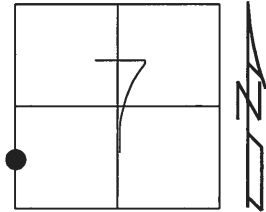


O.D.O.T. DISTRICT 2 SURVEY OFFICE (USE ONLY)

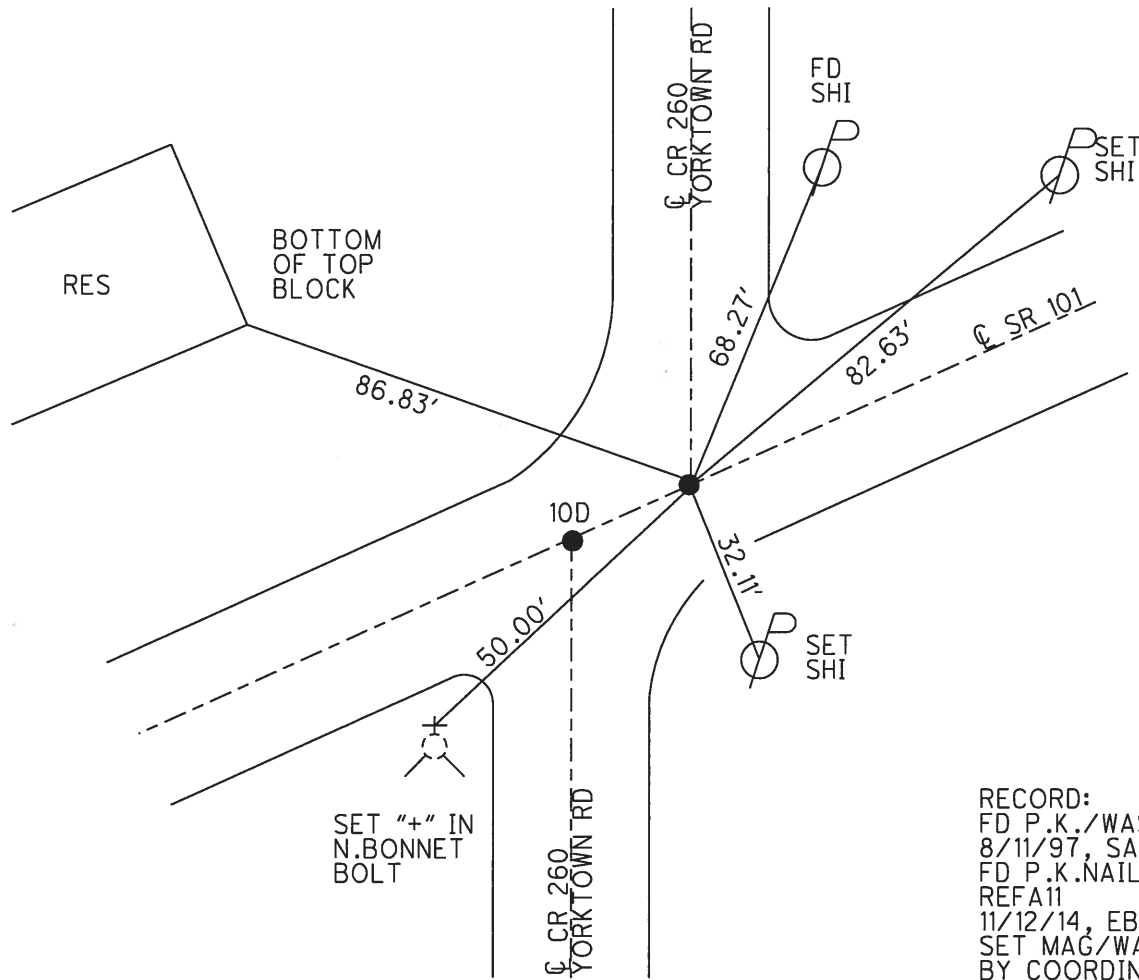
PERSONNEL _____ REFERENCE NO. 11 A SHEET 14 OF 39
 NOTES AUBLE DATE 3/2/18 ROUTE SR 101
 H.C. LEU WEATHER CLOUDY COUNTY SANDUSKY
 R.C. AUBLE TEMP. 33° TOWNSHIP YORK
 _____ SECTION 7
 _____ T 4 N R 17 E

TYPE MONUMENT P.K./WASHER
 ON SURFACE - ~~BELOW~~ ON
~~LEFT~~ - CL PAV'T - RIGHT 1.5'
- TO - EDGE PAVEMENT
 S.L.M. 263+58.01

Grid: Northing: 602152.923 Easting: 1843428.741



DIST. 11-11A = 13.87'



RECORD:
 FD P.K./WASHER
 8/11/97, SAH
 FD P.K.NAIL
 REFA11
 11/12/14, EBW
 SET MAG/WASHER
 BY COORDINATES
 3/2/18, JLL

O.D.O.T. DISTRICT 2 SURVEY OFFICE

PERSONNEL _____

REFERENCE NO. 11

SHEET 4 OF 37

NOTES Hugg

H.C. Van Nuys

R.C. Moser

DATE 8-11-97

WEATHER Clay. Rain

TEMP. 72°F

ROUTE 101

COUNTY Sandusky

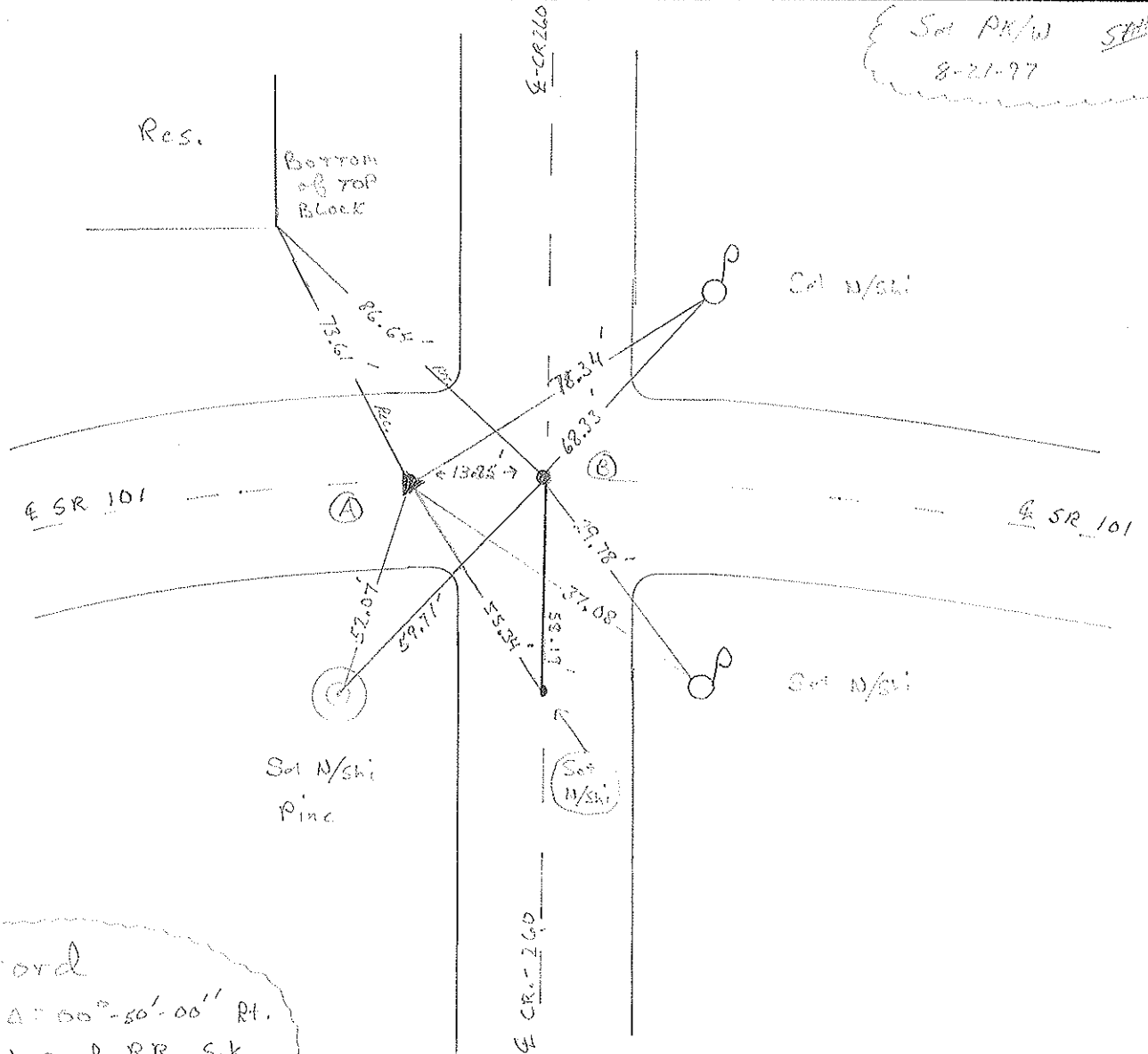
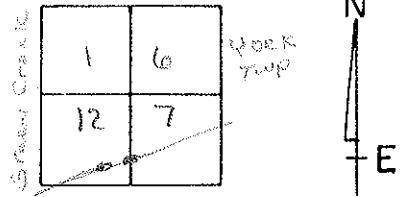
TOWNSHIP Green Creek

SECTION 12

T 4 N R 16 E

TYPE MONUMENT (A) = PK/W (B) = PK/W
 ON SURFACE - ~~BELOW~~ (A), (B) On surface
~~LEFT~~ C. PAV'T. - RIGHT (A), (B) 1.6' Pt of E
TO EDGE PAVEMENT

S.L. PK. Pt (A) = 21043.3 Pt (B) = 21047.5



Record
 P.I. $A = 00^{\circ} - 50' - 00''$ Pt.
 PK/W and RR. Spk.
 below surface
 26247 ± old sta. 58 + 5217

Resurfaced ~~1997~~ 1997

O.D.O.T. DISTRICT 2 SURVEY OFFICE

PERSONNEL

REFERENCE NO. 11

SHEET 3 OF

NOTES Cronin

H.C. Pipple

R.C. Geyman

DATE 10/14/87

WEATHER sunny

TEMP. 52°

ROUTE #101

COUNTY Sandusky

TOWNSHIP Green Creek

SECTION 12

T. 14 N R. 16 E

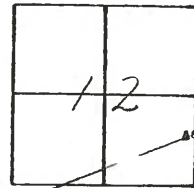
TYPE MONUMENT P.K. & washer

ON SURFACE - BELOW on surface

LEFT- & PAV'T. - RIGHT 1.4' Rt & Pav't

TO EDGE PAVEMENT

S.L.M. 262+77± old Sta. 58+52.17



P.I. A = 00°50'00" Rt. Rec.
P.K. & washer and R.R
spike below surface

