

O.D.O.T. DISTRICT 2 SURVEY OFFICE (USE ONLY)

PERSONNEL _____ REFERENCE NO. 11 B SHEET 15 OF 39
 NOTES AUBLE DATE 3/2/18 ROUTE SR 101
 H.C. LEU WEATHER CLOUDY COUNTY SANDUSKY
 R.C. AUBLE TEMP. 33° TOWNSHIP YORK
 _____ SECTION 7
 _____ T 4 N R 17 E

TYPE MONUMENT MAG/WASHER

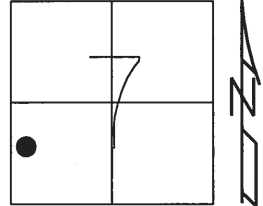
ON SURFACE - ~~BELOW~~ ON _____

~~LEFT~~ - ℄ PAV'T - RIGHT 1.9'

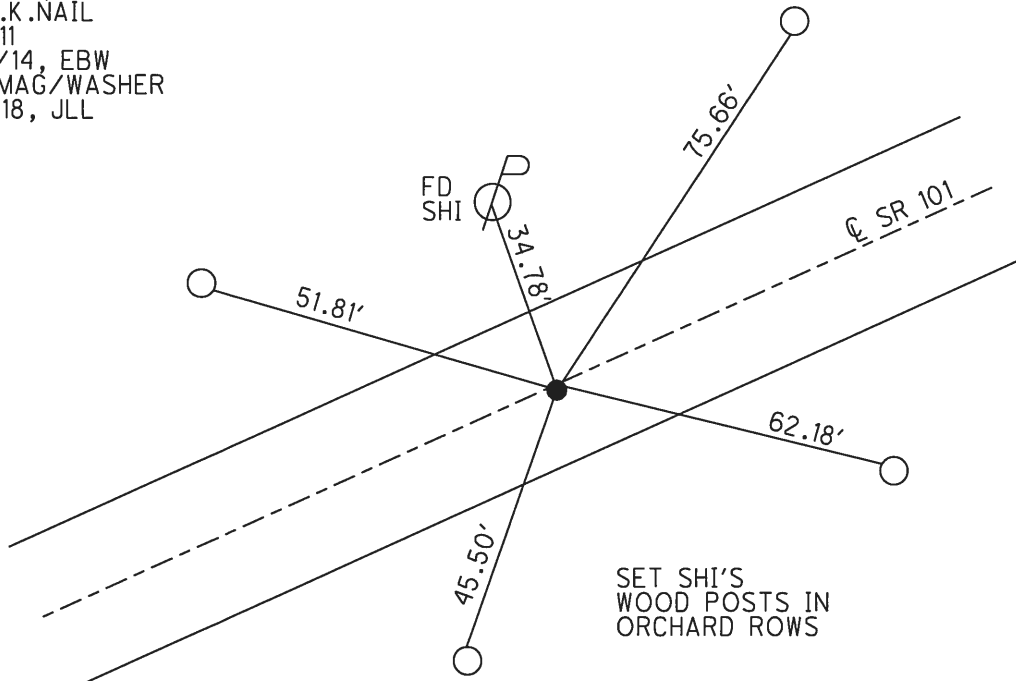
8.5' TO RT EDGE PAVEMENT

S.L.M. 266+30.75

Grid: Northing: 602260.667 Easting: 1843679.294



RECORD:
 ORIGIN UNKNOWN
 FD LG.R.R.SPIKE
 8/11/97, SAH
 SET P.K./WASHER
 8/21/97, SAH
 FD P.K.NAIL
 REFB11
 11/12/14, EBW
 SET MAG/WASHER
 3/2/18, JLL



O.D.O.T. DISTRICT 2 SURVEY OFFICE

PERSONNEL

REFERENCE NO. _____

SHEET 5 OF 37

NOTES Huss

H.C. VanNusen

R.C. Moser

DATE 8-11-97

WEATHER Cldy-Fair

TEMP. +72°F

ROUTE 101

COUNTY Sandusky

TOWNSHIP York

SECTION 7

T 4 N R 17 E

TYPE MONUMENT Lg. R.R. Spk.

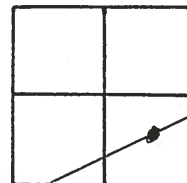
ON SURFACE - ~~BELOW~~ surface

~~LEFT & PAV'T.~~ - RIGHT 1.7 Rt.

8.5' TO Rt. EDGE PAVEMENT

S.L.M. 8+131 SLK

11B



Orig. Unknown

Set PK/W
8-21-97 SAH

