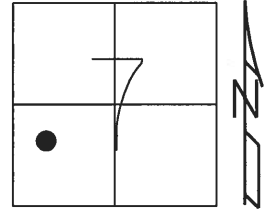


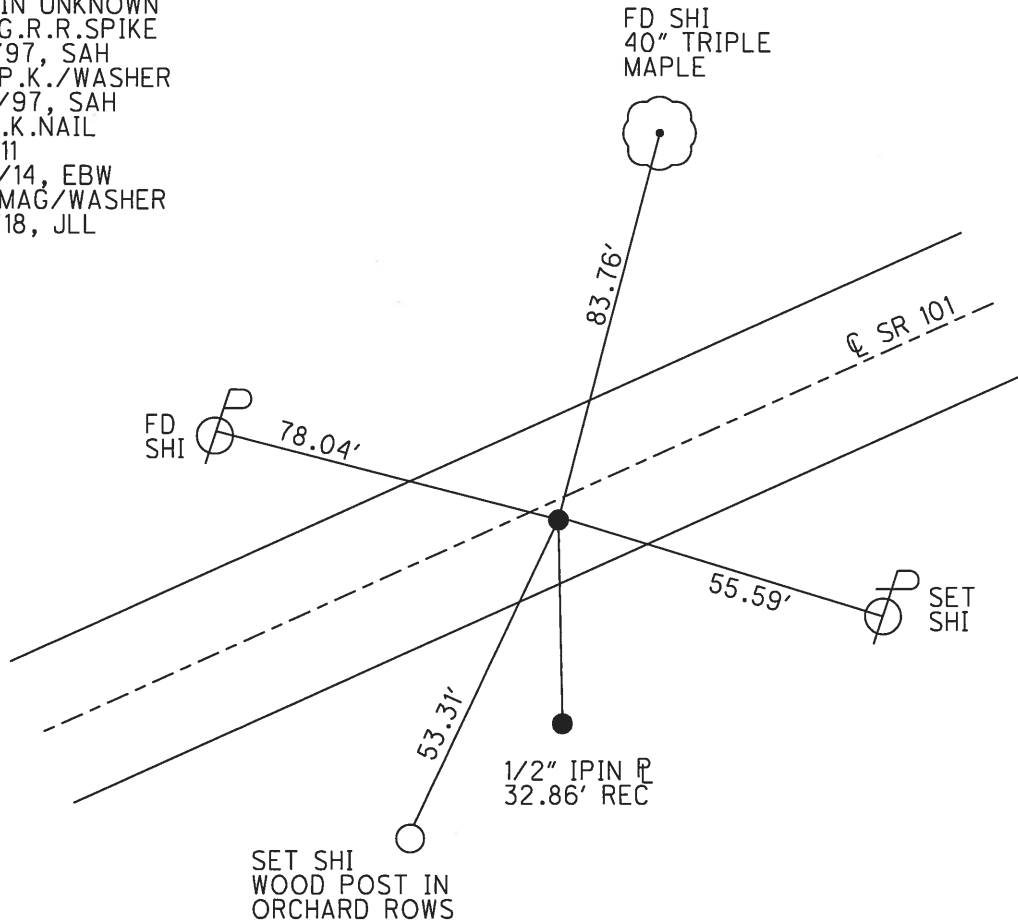
O.D.O.T. DISTRICT 2 SURVEY OFFICE (USE ONLY)

PERSONNEL \_\_\_\_\_ REFERENCE NO. 11 C SHEET 16 OF 39  
 NOTES AUBLE DATE 3/2/18 ROUTE SR 101  
 H.C. LEU WEATHER CLOUDY COUNTY SANDUSKY  
 R.C. AUBLE TEMP. 33° TOWNSHIP YORK  
 \_\_\_\_\_ SECTION 7  
 \_\_\_\_\_ T 4 N R 17 E

TYPE MONUMENT MAG/WASHER  
 ON SURFACE - ~~BELOW~~ ON \_\_\_\_\_  
~~LEFT~~ -  $\odot$  PAV'T - RIGHT 2.5'  
8.2' TO RT EDGE PAVEMENT  
 S.L.M. 273+44.03



RECORD:  
 ORIGIN UNKNOWN  
 FD LG.R.R.SPIKE  
 8/11/97, SAH  
 SET P.K./WASHER  
 8/21/97, SAH  
 FD P.K.NAIL  
 REFC11  
 11/12/14, EBW  
 SET MAG/WASHER  
 3/2/18, JLL



# O.D.O.T. DISTRICT 2 SURVEY OFFICE

PERSONNEL \_\_\_\_\_

REFERENCE NO. \_\_\_\_\_

SHEET 6 OF 37

NOTES Huss

H.C. Van Dusen

R.C. Moser

DATE 8-11-97

WEATHER Clody-Fair

TEMP. +72°F

ROUTE 101

COUNTY Sandusky

TOWNSHIP York

SECTION 7

T 4 N R 17 E

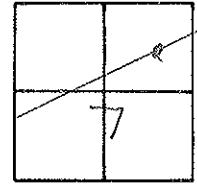
TYPE MONUMENT lg. R.R. - Spk.

ON SURFACE - ~~BELOW~~ Surface

~~LEFT~~ - PAV'T - ~~RIGHT~~ 2' Rt

8.2' TO Rt. EDGE PAVEMENT

S.L.M. 8+349 SLK



Orig. Unknown

Set PK/w  
SAH 8-21-97

