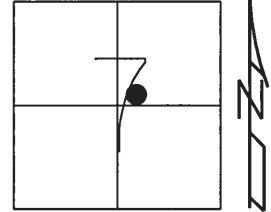


O.D.O.T. DISTRICT 2 SURVEY OFFICE (USE ONLY)

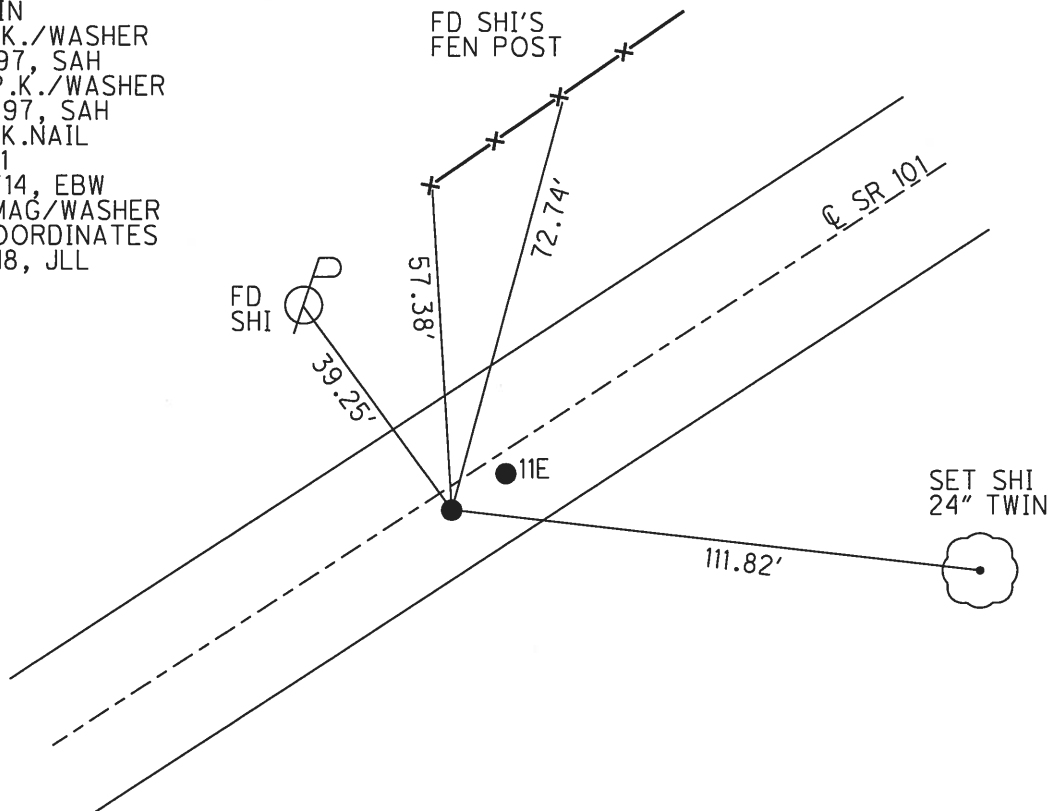
PERSONNEL _____ REFERENCE NO. 11 D SHEET 17 OF 39
 NOTES AUBLE DATE 3/5/18 ROUTE SR 101
 H.C. LEU WEATHER SUNNY COUNTY SANDUSKY
 R.C. AUBLE TEMP. 32° TOWNSHIP YORK
 _____ SECTION 7
 _____ T 4 N R 17 E

TYPE MONUMENT MAG/WASHER
 ON SURFACE - ~~BELOW~~ ON
~~LEFT~~ - CL PAV'T - RIGHT 2.7'
7.6' TO RT EDGE PAVEMENT
 S.L.M. 296+35.63
 Grid: Northing: 603447.804 Easting: 1846439.738



RECORD: P.I.
 STA. 91+51.08
 FD P.K./WASHER
 ATOP R.R.SPIKE
 CRONIN
 FD P.K./WASHER
 8/4/97, SAH
 SET P.K./WASHER
 8/21/97, SAH
 FD P.K.NAIL
 REFD11
 11/12/14, EBW
 SET MAG/WASHER
 BY COORDINATES
 3/5/18, JLL

DIST. 11D-11E = 6.06'



O.D.O.T. DISTRICT 2 SURVEY OFFICE

PERSONNEL _____

REFERENCE NO. _____

SHEET 7 OF 37

NOTES Huss

H.C. VanDusen

R.C. Moser

DATE 8-4-97

WEATHER Cloudy - Sprinkles

TEMP. +78°F

ROUTE 101

COUNTY Sandusky

TOWNSHIP York

SECTION 7

T4 N R 12 E

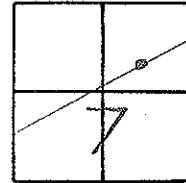
TYPE MONUMENT PK/W

ON SURFACE ~~BELOW~~ surface

LEFT- \odot PAV'T. - RIGHT \textcircled{A} = 2.2 RT \textcircled{B} 2.0 RT

7.6 TO RT. EDGE PAVEMENT

S.L.M.K. \textcircled{A} - 9+051.3 \textcircled{B} - 9+053.1



Record. 91451.08

PT Δ - $04^{\circ}14'00$ Lt
PK/W & R.R. Spk. below
surface Cronin

Pt A apparent prop line
Found PK only

Note: Possible Incorporate
SLK stations
Check before using

Set PK/W
8-21-97 SAH

