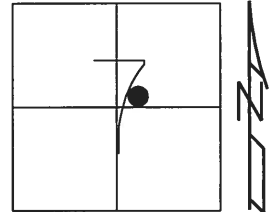


O.D.O.T. DISTRICT 2 SURVEY OFFICE (USE ONLY)

PERSONNEL	REFERENCE NO.	11 E	SHEET	18	OF	39
NOTES	AUBLE	DATE	3/5/18	ROUTE	SR 101	
H.C.	LEU	WEATHER	SUNNY	COUNTY	SANDUSKY	
R.C.	AUBLE	TEMP.	32°	TOWNSHIP	YORK	
				SECTION	7	
				T	4	N
				R	17	E

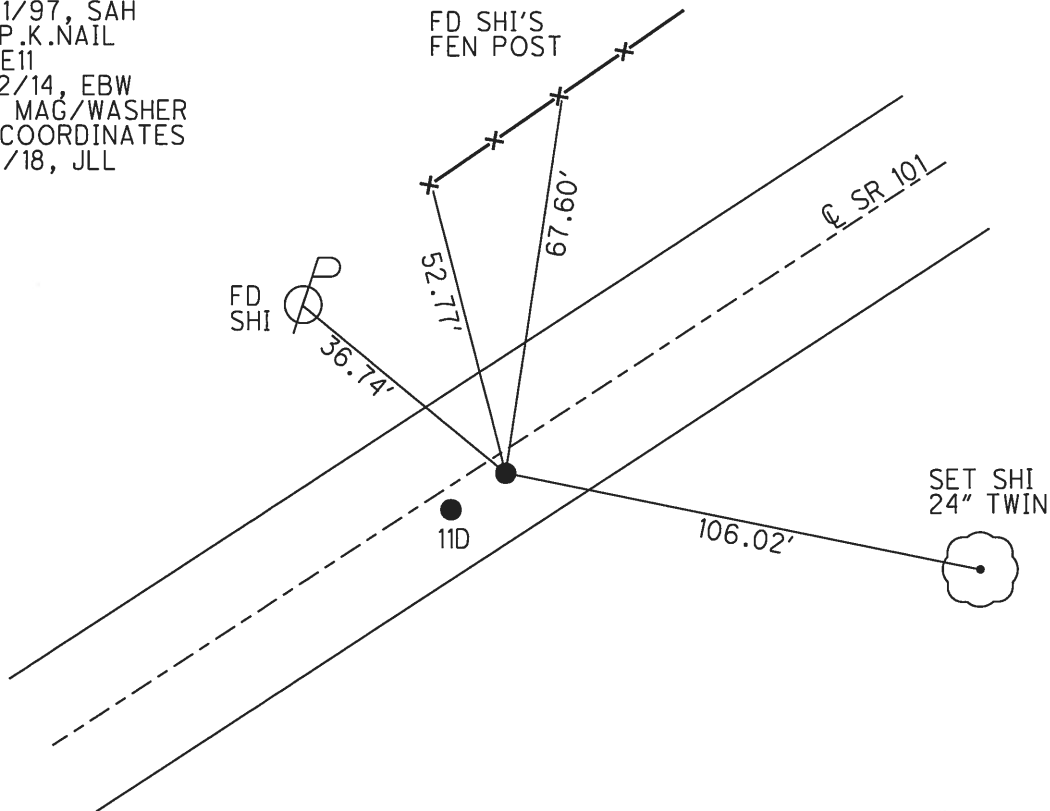
TYPE MONUMENT MAG/WASHER
 ON SURFACE - ~~BELOW~~ ON
~~LEFT~~ - CL PAV'T - RIGHT 2.9'
7.6' TO RT EDGE PAVEMENT
 S.L.M. 296+41.69



Grid: Northing: 603450.185 Easting: 1846445.307

RECORD:
 FD P.K./WASHER
 8/4/97, SAH
 SET P.K./WASHER
 8/21/97, SAH
 FD P.K.NAIL
 REF E11
 11/12/14, EBW
 SET MAG/WASHER
 BY COORDINATES
 3/5/18, JLL

DIST. 11D-11E= 6.06'



O.D.O.T. DISTRICT 2 SURVEY OFFICE

PERSONNEL _____

REFERENCE NO. _____

SHEET 7 OF 37

NOTES Huss

H.C. VanDusen

R.C. Moser

DATE 8-4-97

WEATHER Cloudy - Sprinkles

TEMP. +78°F

ROUTE 101

COUNTY Sandusky

TOWNSHIP York

SECTION 7

T4 N R 12 E

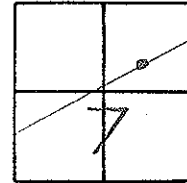
TYPE MONUMENT PK/W

ON SURFACE ~~BELOW~~ surface

LEFT - CL PAV'T. - RIGHT (A) = 2.2 RT (B) = 2.0 RT

7.6 TO RT. EDGE PAVEMENT

S.L. MK. (A) - 9+051.3 (B) - 9+053.1



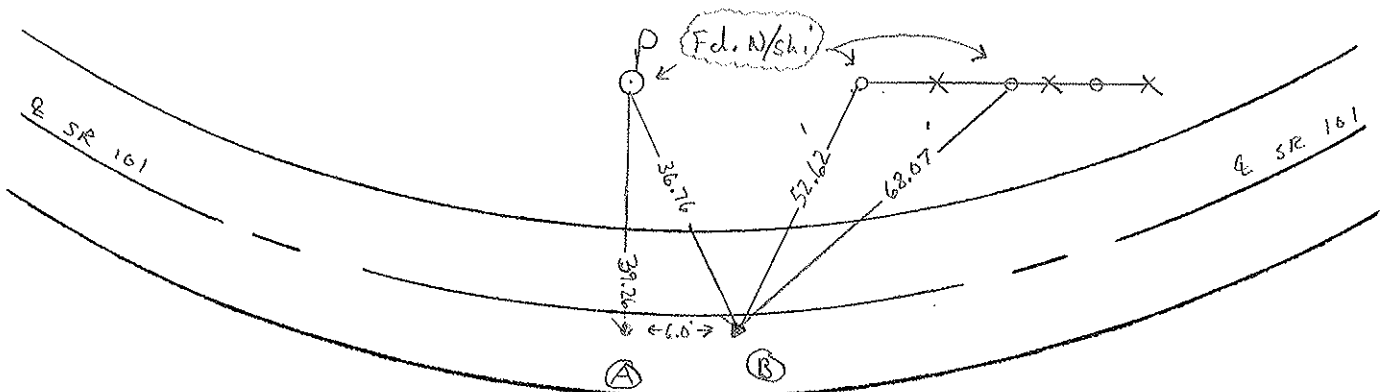
Record. 91451.08

PT $\Delta - 04^{\circ} 14' - 00$ Lt
PK/W & R.R. Spk. below
surface Cronin

Pt A apparent prop line
Found PK only

Note: Possible Incorporate
SLK stations
Check before using

Set PK/W
8-21-97 SAH



O.D.O.T. DISTRICT 2 SURVEY OFFICE

PERSONNEL _____

REFERENCE NO. _____

SHEET 4 OF _____

NOTES Cronin

H.C. Ripple

R.C. Geyman

DATE 10/14/87

WEATHER sunny

TEMP. 57°

ROUTE #101

COUNTY Sandusky

TOWNSHIP York

SECTION 7

T 4 N R 17 E

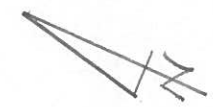
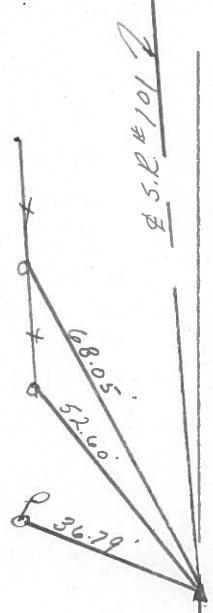
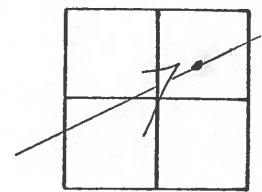
TYPE MONUMENT P.K. & washer

ON SURFACE - BELOW on surface

LEFT - € PAV'T. - RIGHT 2.5' Pt. & Pavt.

TO _____ EDGE PAVEMENT

S.L.M. old Sta. 91+51.08



P.I. $\Delta = 04^{\circ}14'00''$ Lt. Sec.
P.K. & washer & R.R. spike below
Surface

S.R. #101

PERSONNEL TITLE PERSONNEL TITLE

Schneider

Potts

COUNTY Sandusky

DATE March 1968

Mosser

S. R. # 101

WEATHER

Barbour

SEC. N.E. of Clyde

TEMP.

Redding

DESCRIPTION

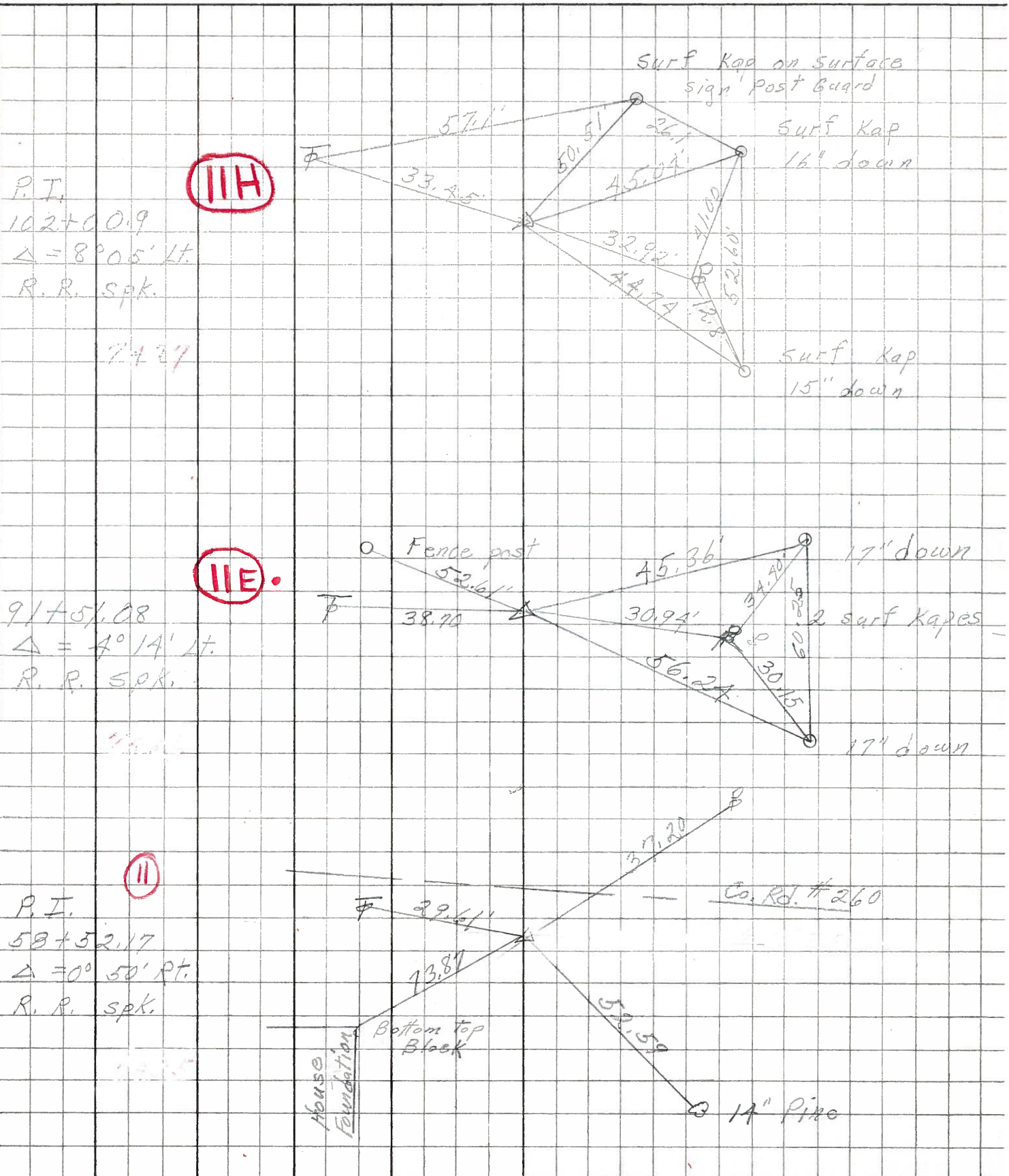
Ties for Control Points

JOB NO.

LEFT

CENTER LINE

RIGHT



P.I.
102+00.9
 $\Delta = 8^{\circ}05' Lt.$
R. R. Spk.

III

74.37

91+51.08
 $\Delta = 4^{\circ}14' Lt.$
R. R. Spk.

III E.

11.11

P.I.
58+52.17
 $\Delta = 0^{\circ}50' Rt.$
R. R. Spk.

II

13.35

PERSONNEL TITLE PERSONNEL TITLE COUNTY Sandusky DATE Feb. 5, 1964
 KRABILL _____
 Kowaleski _____ S. R. #101 WEATHER _____
 Geyman _____
 Bruggeman _____ SEC. _____ TEMP. _____

DESCRIPTION U.S. #20 North to Erie Co. Line JOB NO. _____

