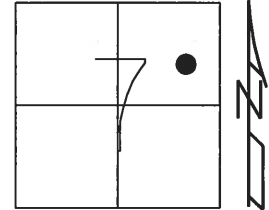


**O.D.O.T. DISTRICT 2 SURVEY OFFICE (USE ONLY)**

PERSONNEL	REFERENCE NO.	11 H	SHEET	21	OF	39
NOTES	AUBLE	DATE	3/5/18	ROUTE	SR 101	
H.C.	LEU	WEATHER	SUNNY	COUNTY	SANDUSKY	
R.C.	AUBLE	TEMP.	36°	TOWNSHIP	YORK	
				SECTION	7	
				T	4	N
				R	17	E

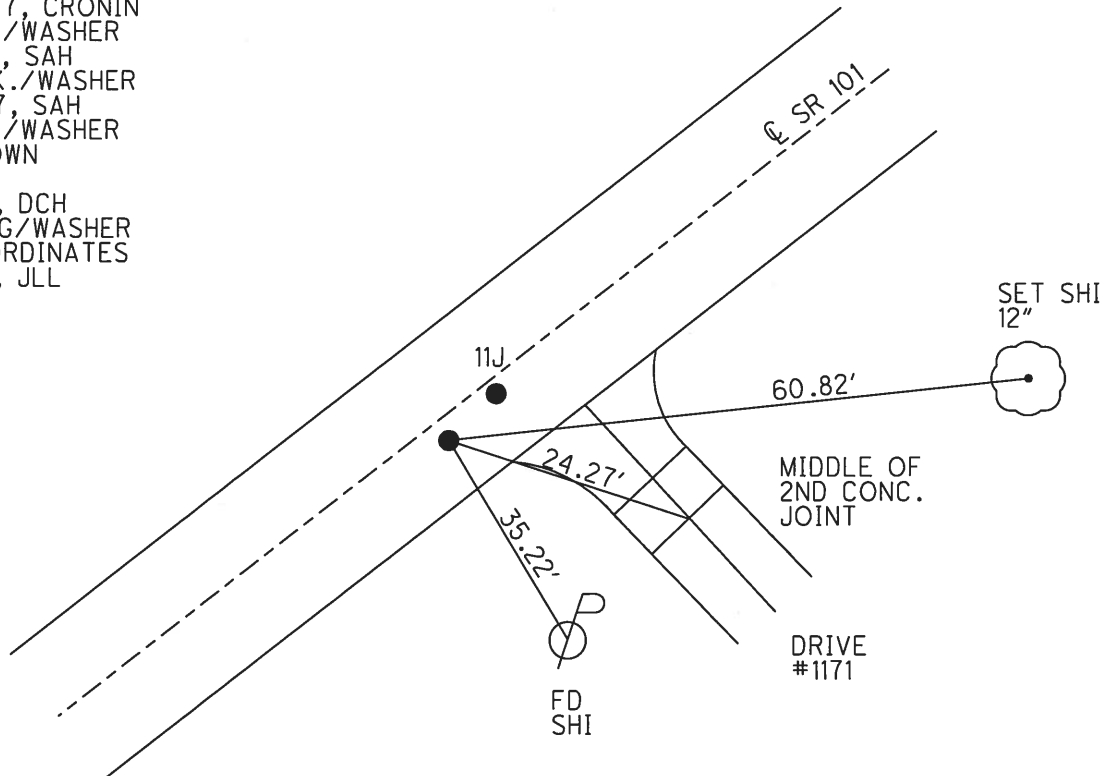
TYPE MONUMENT MAG//WASHER  
 ON SURFACE - ~~BELOW~~ ON  
~~LEFT~~ - ℄ PAV'T - RIGHT 3.8'  
7' TO RT EDGE PAVEMENT  
 S.L.M. 306+88



Grid: Northing: 603934.750 Easting: 1847372.653

RECORD: P.I.  
 STA. 102+00.90  
 $\Delta = 8^{\circ} 05' 00''$  LT  
 FD P.K./WASHER  
 ATOP R.R.SPIKE  
 10/14/87, CRONIN  
 FD P.K./WASHER  
 8/4/97, SAH  
 SET P.K./WASHER  
 8/21/97, SAH  
 FD P.K./WASHER  
 0.2' DOWN  
 REFF11  
 12/1/14, DCH  
 SET MAG/WASHER  
 BY COORDINATES  
 3/5/18, JLL

DIST. 11H-11I = 4.34'



# O.D.O.T. DISTRICT 2 SURVEY OFFICE

PERSONNEL \_\_\_\_\_

REFERENCE NO. \_\_\_\_\_

SHEET 8 OF 37

NOTES Huss

H.C. Van Dusen

R.C. Moser

DATE 8-4-97

WEATHER Cldy. Sprinkler

TEMP. +78° F

ROUTE 101

COUNTY Sandusky

TOWNSHIP York

SECTION 7

T 4 N R 17 E

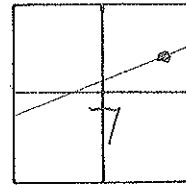
TYPE MONUMENT PK/W (A) (B) (C)

(ON SURFACE) - ~~BELOW~~ surface

~~LEFT~~ PAV'T. (RIGHT) (A) 2.7' Rt (B) 1.3' Rt (C) 0.9' Rt

(A) 7.0' TO Rt. EDGE PAVEMENT (B) 8.4' Rt. (C) 9.0' Rt.

S.L.M. (A) 8+373.77 (B) 8+376.11 (C) 8+385.87



Record 102+00.90

PI  $\Delta = 08^{\circ} 05' 00''$  Lt.

PK/W atop R.R. spk.

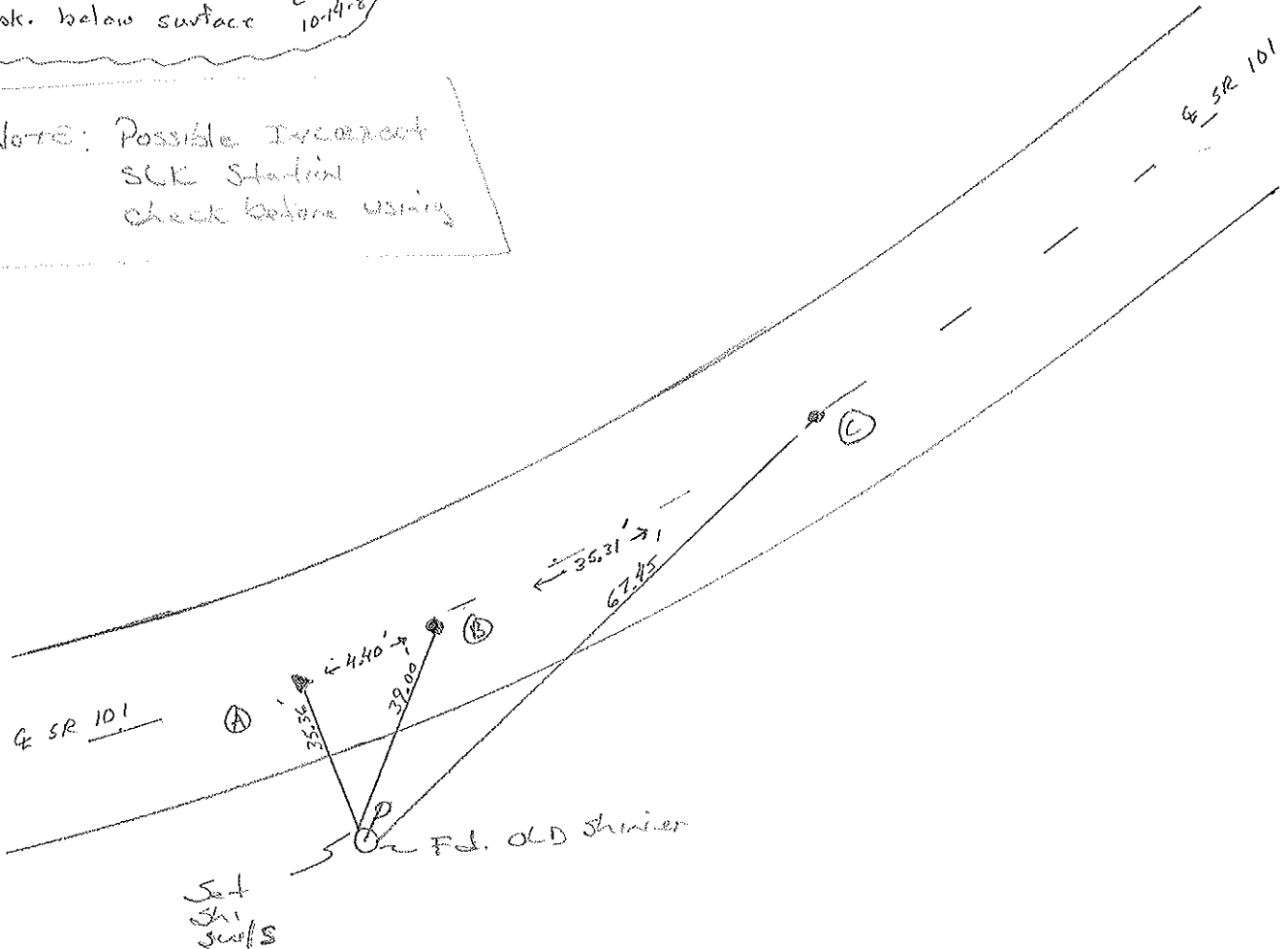
spk. below surface

*Corrin  
10-14-87*

PTS. B & C  
ORIGIN UNKNOWN

Set PK/W  
8-21-97 SAH

NOTE: Possible Incorrect  
S&C Station  
check before using



# O.D.O.T. DISTRICT 2 SURVEY OFFICE

PERSONNEL \_\_\_\_\_

REFERENCE NO. \_\_\_\_\_

SHEET 5 OF \_\_\_\_\_

NOTES Cronin

H.C. Ripple

R.C. Ceyman

DATE 10/14/87

WEATHER sunny

TEMP. 52°

ROUTE #101

COUNTY Sandusky

TOWNSHIP York

SECTION 7

T + N R 17 E

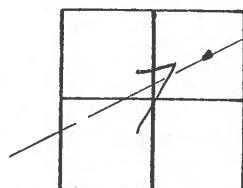
TYPE MONUMENT P.K. & washer

ON SURFACE - BELOW on surface

LEFT - ☉ PAV'T. - RIGHT 28' rt. & Pav't.

TO \_\_\_\_\_ EDGE PAVEMENT

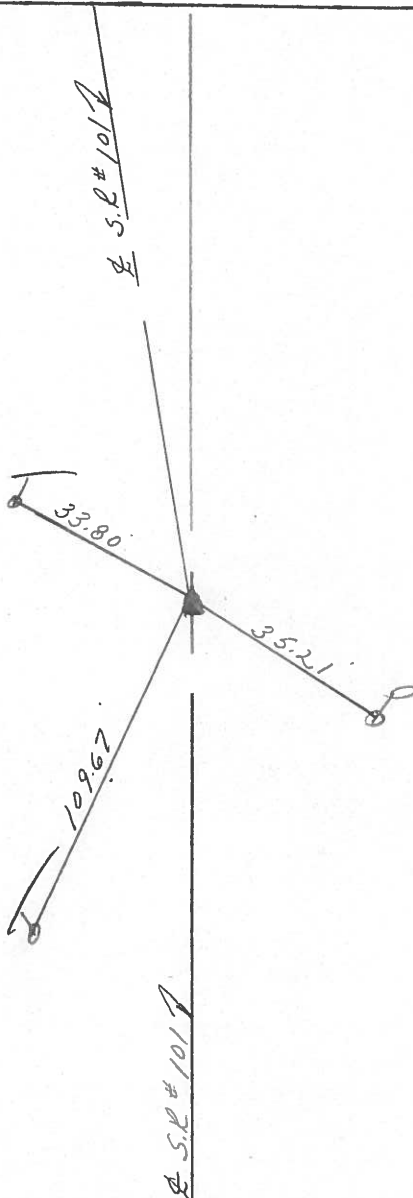
S.L.M. \_\_\_\_\_ old Sta. 102+00.90



P.I. - A = 08°05'00" Lt. Rec.

P.K. & washer atop P.K.

spike below surface



PERSONNEL TITLE PERSONNEL TITLE

Schneider

Potts

COUNTY Sandusky

DATE March 1968

Mosser

S. R. # 101

WEATHER

Barbour

SEC. N.E. of Clyde

TEMP.

Redding

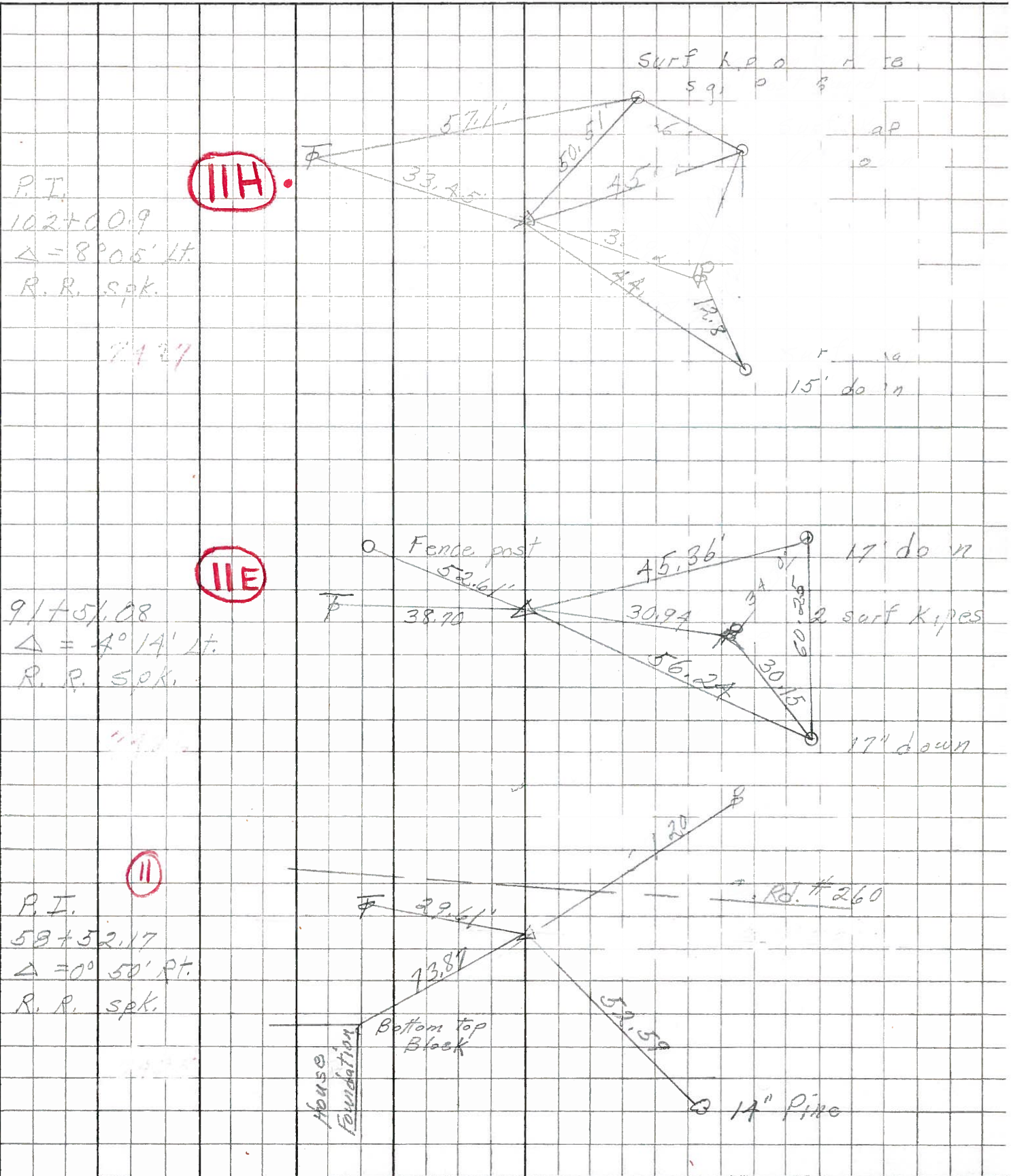
DESCRIPTION Ties For Control Points

JOB NO.

LEFT

CENTER LINE

RIGHT



P.I.  
102+00.9  
 $\Delta = 8^{\circ} 05' Lt.$   
R. R. S.P.K.

7.1.27

91+51.08  
 $\Delta = 4^{\circ} 14' Lt.$   
R. R. S.P.K.

11.1.27

P.I.  
58+52.17  
 $\Delta = 0^{\circ} 50' Rt.$   
R. R. S.P.K.

11.1.27

PERSONNEL TITLE PERSONNEL TITLE  
 Krabill \_\_\_\_\_  
 Kowaleski \_\_\_\_\_  
 Geyman \_\_\_\_\_  
 Bruggeman \_\_\_\_\_

COUNTY Sandusky DATE Feb. 5, 1964  
 S. R. # 101 WEATHER \_\_\_\_\_  
 SEC. \_\_\_\_\_ TEMP. \_\_\_\_\_

DESCRIPTION U.S. #20 North to Erie Co. Line JOB NO. \_\_\_\_\_

