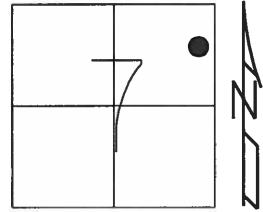


O.D.O.T. DISTRICT 2 SURVEY OFFICE (USE ONLY)

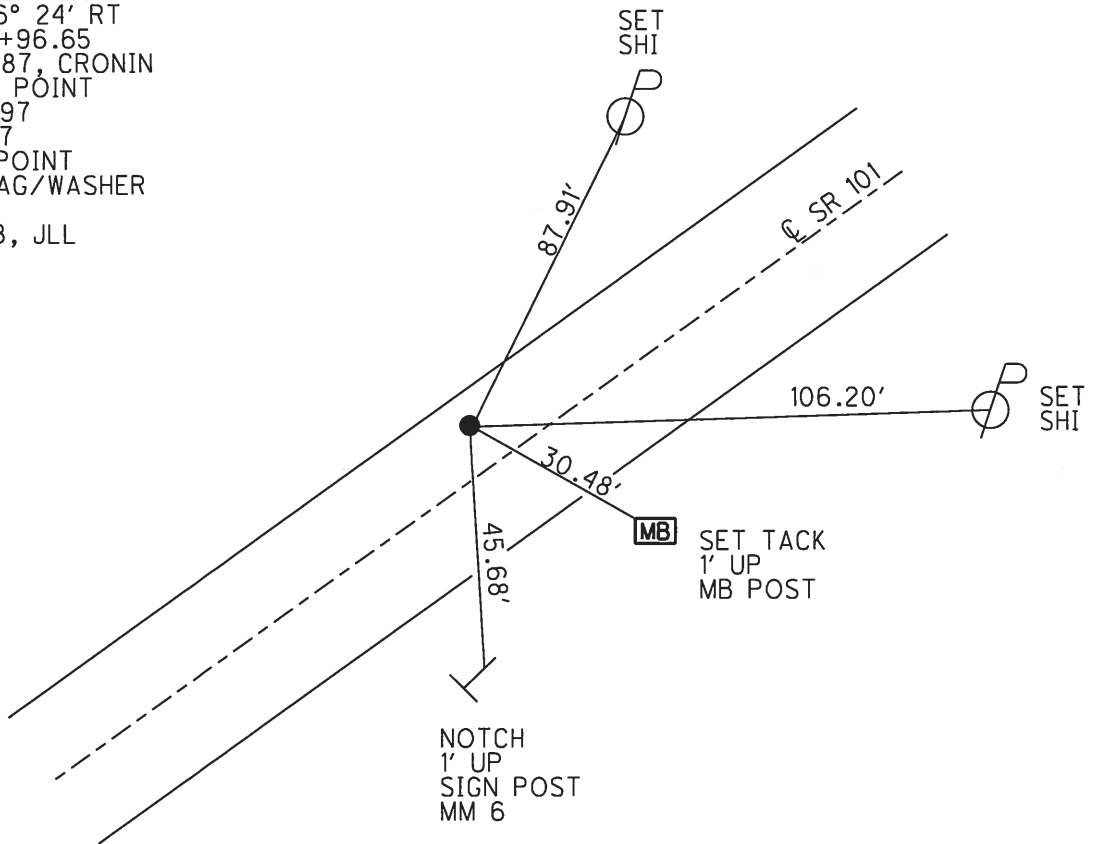
PERSONNEL	REFERENCE NO.	11 J	SHEET	23	OF	39
NOTES	AUBLE	DATE	3/9/18	ROUTE	SR 101	
H.C.	LEU	WEATHER	CLOUDY	COUNTY	SANDUSKY	
R.C.	AUBLE	TEMP.	32°	TOWNSHIP	YORK	
				SECTION	7	
				T	4	N
				R	17	E

TYPE MONUMENT MAG/WASHER  
 ON SURFACE - ~~BELOW~~ ON  
 LEFT - ℄ PAV'T - ~~RIGHT~~ 8.9'  
 - TO - EDGE PAVEMENT  
 S.L.M. 317+29.67



Grid: Northing: 604572.730 Easting: 1848267.807

RECORD: P.I.  
 $\Delta = 06^\circ 24' RT$   
 STA112+96.65  
 10/14/87, CRONIN  
 D.N.F. POINT  
 7/30/97  
 8/4/97  
 CALC POINT  
 SET MAG/WASHER  
 REFK11  
 3/9/18, JLL



# O.D.O.T. DISTRICT 2 SURVEY OFFICE

PERSONNEL \_\_\_\_\_

REFERENCE NO. \_\_\_\_\_

SHEET 10 OF 37

NOTES Huss

H.C. Van Nuson

R.C. Moser

DATE 8-4-97

WEATHER Clay - Sprinkler

TEMP. +78°F

ROUTE 101

COUNTY Sandusky

TOWNSHIP York

SECTION 7

T 4 N R 17 E

TYPE MONUMENT None

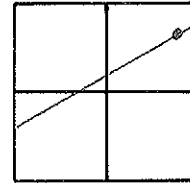
ON SURFACE - BELOW \_\_\_\_\_

LEFT - C/P AV'T. - RIGHT 10' ± 41 of 9

TO \_\_\_\_\_ EDGE PAVEMENT

S.L.M. old sta - 112 + 96.65

SLK = 91712.87



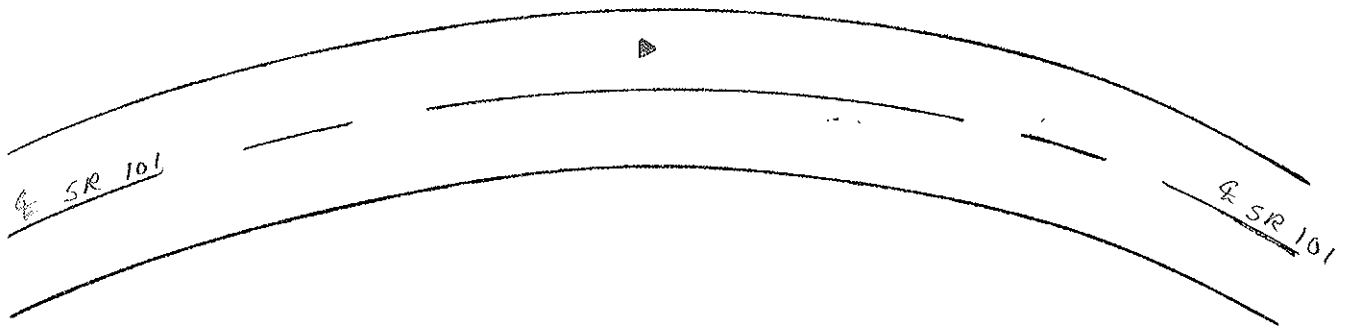
Recover

PI A = 06° 24' 00" Rt.

E = 9.0 Cronin 10-4-87

NOTE:

7-30-97 Found  
Hole 10" Deep dug  
out by others.  
DID NOT FIND POINT



O.D.O.T. DISTRICT 2 SURVEY OFFICE

PERSONNEL

REFERENCE NO. \_\_\_\_\_

SHEET 6 OF \_\_\_\_\_

NOTES Cronin

H.C. Ripple

R.C. Geyman

DATE 10/14/87

WEATHER sunny

TEMP. 59°

ROUTE # 101

COUNTY Sandusky

TOWNSHIP York

SECTION 7

T 4 N R 17 E

TYPE MONUMENT None

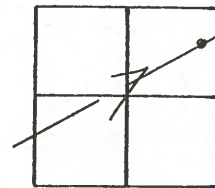
ON SURFACE - BELOW \_\_\_\_\_

LEFT - CL PAV'T. - RIGHT 10' ± Lt & Pavt

\_\_\_\_\_ TO \_\_\_\_\_ EDGE PAVEMENT

S.L.M. old Sta. 112+96.65

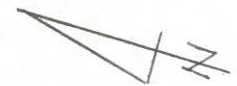
115



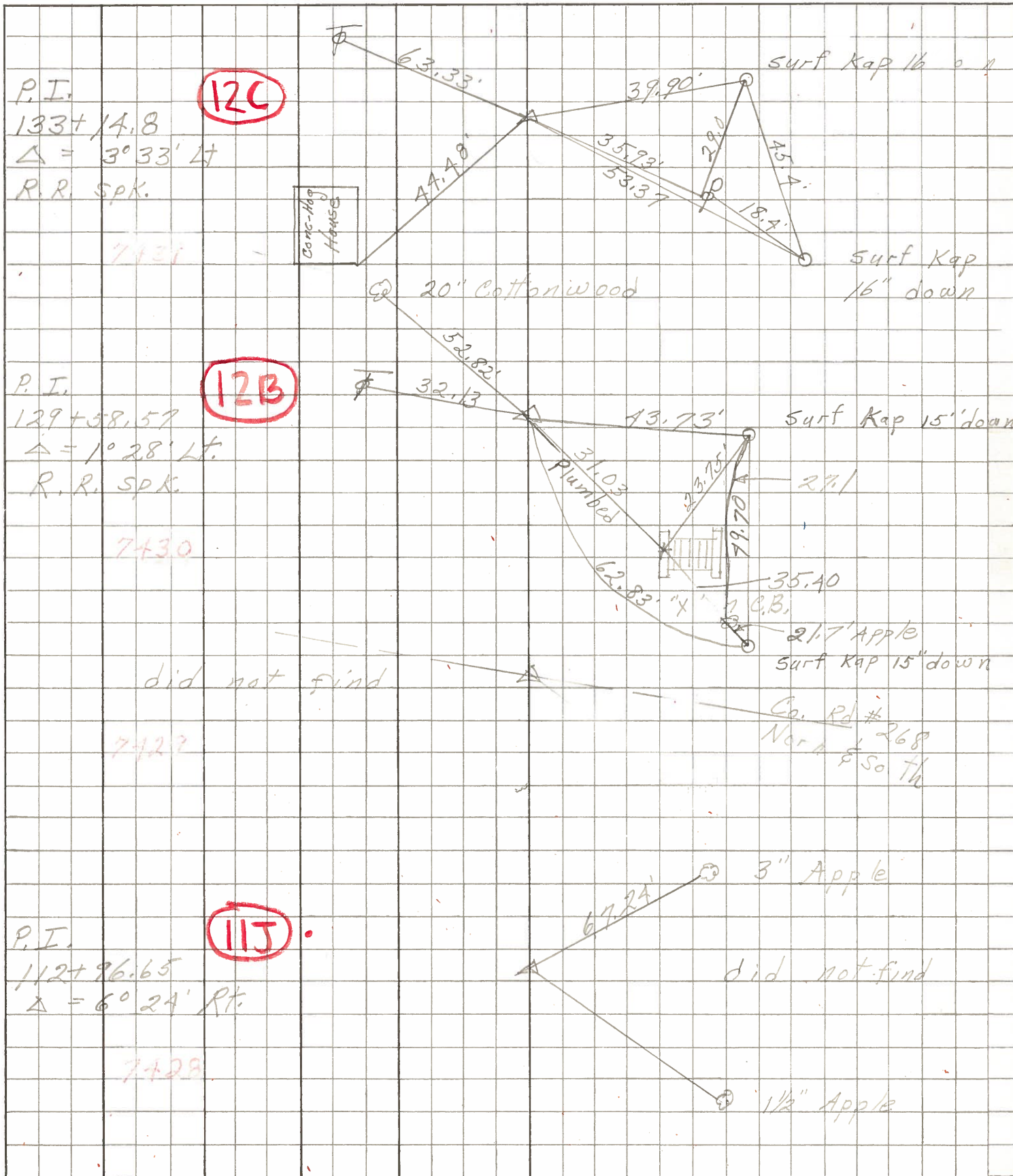
P.I.  $\Delta = 06^{\circ}24'00''$  Rt. Rec  
E=9.0' - will have to set

S.L.#101A

S.L.#101A



PERSONNEL	TITLE	PERSONNEL	TITLE	COUNTY	DATE
Schneider		Potts		Sandusky	7
Mosser				S. R.	101
Barbour				WEATHER	Wind
Redding				SEC.	N.E. of
				TEMP.	6
DESCRIPTION	Ties for Control Pits			JOB NO.	



P.I.  
133+14.8  
 $\Delta = 3^{\circ}33' Lt.$   
R.R. Spk.

12C

7431

Conc. Bkg House

20" Cottonwood

Surf Kap 16" down

P.I.  
129+58.57  
 $\Delta = 1^{\circ}28' Lt.$   
R.R. Spk.

12B

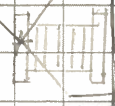
7430

32.13

13.73'

Surf Kap 15" down

Plumbed



2 1/7" Apple  
Surf Kap 15" down

did not find

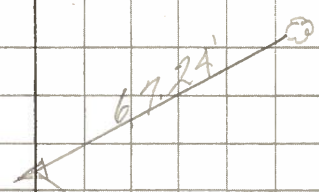
7427

Co. Rd # 268  
North & South

P.I.  
112+96.65  
 $\Delta = 6^{\circ}24' Rt.$

11J

7428



did not find

1 1/2" Apple

PERSONNEL TITLE PERSONNEL TITLE

KrABILL  
Kowaleski  
Geyman  
Bruggeman

COUNTY Sandusky DATE Feb. 5, 1964

S. R. # 101 WEATHER

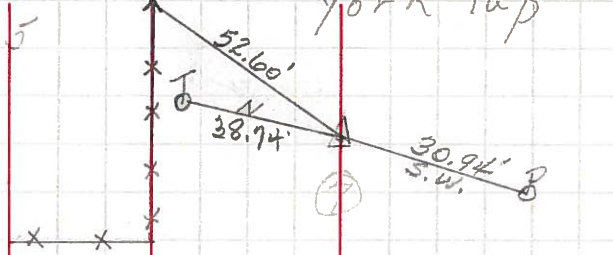
SEC. TEMP.

DESCRIPTION U.S. #20 North to Erie Co. Line

LEFT CENTER LINE RIGHT JOB NO.

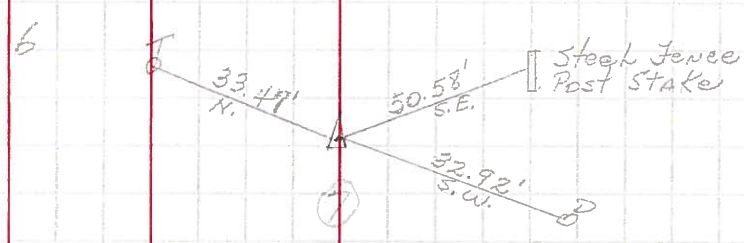
Sta. 91+51.08  
 $\Delta = 4^{\circ} - 14' \text{ Lt.}$   
R.R. Spike 2-5-64

11E



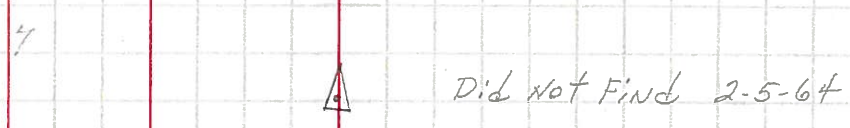
Sta. 102+00.9  
 $\Delta = 8^{\circ} - 05' \text{ Lt.}$   
R.R. Spike 2-5-64

11H



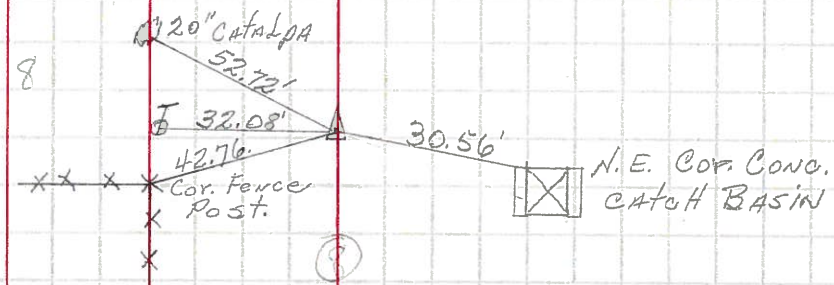
Sta. 112+96.65  
 $\Delta = 6^{\circ} - 24' \text{ Rt.}$   
2-5-64

11J



Sta. 129+58.57  
 $\Delta = 1^{\circ} - 28' \text{ Lt.}$   
R.R. Spike 2-5-64

12B



Sta. 133+14.8  
 $\Delta = 3^{\circ} - 33' \text{ Lt.}$   
R.R. Spike 2-5-64

12C

