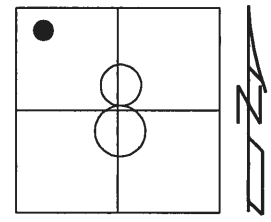


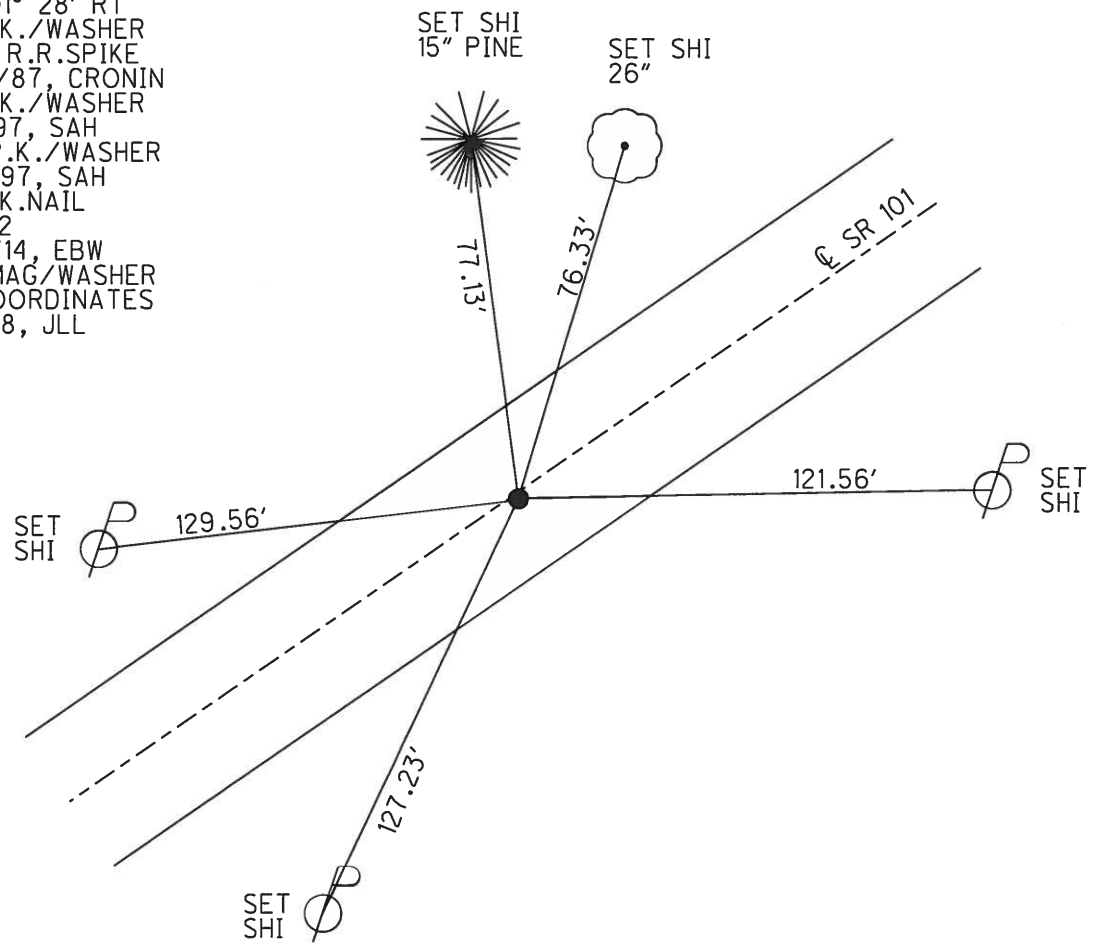
O.D.O.T. DISTRICT 2 SURVEY OFFICE (USE ONLY)

PERSONNEL	REFERENCE NO.	12 B	SHEET	26	OF	39
NOTES	AUBLE	DATE	3/5/18	ROUTE	SR 101	
H.C.	LEU	WEATHER	SUNNY	COUNTY	SANDUSKY	
R.C.	AUBLE	TEMP.	36°	TOWNSHIP	YORK	
				SECTION	8	
				T	4	N
				R	17	E

TYPE MONUMENT P.K.NAIL
 ON SURFACE - ~~BELOW~~ ON
~~LEFT~~ - CL PAV'T - RIGHT 0.6'
9.2' TO RT EDGE PAVEMENT
 S.L.M. 334+46.89
 Grid: Northing: 605382.908 Easting: 1849707.099



RECORD: P.I.
 STA. 129+58.57
 $\Delta = 01^\circ 28' RT$
 FD P.K./WASHER
 OVER R.R.SPIKE
 10/14/87, CRONIN
 FD P.K./WASHER
 8/4/97, SAH
 SET P.K./WASHER
 8/21/97, SAH
 FD P.K.NAIL
 REFB12
 11/10/14, EBW
 SET MAG/WASHER
 BY COORDINATES
 3/5/18, JLL



O.D.O.T. DISTRICT 2 SURVEY OFFICE

PERSONNEL _____

REFERENCE NO. _____

SHEET 13 OF 37

NOTES Huss

H.C. Van Dusen

R.C. Moser

DATE 8-4-77

WEATHER Clidy-Sprinkles

TEMP. 178°F

ROUTE 101

COUNTY Sandusky

TOWNSHIP York

SECTION 8

T 4 N R 17 E

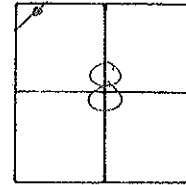
TYPE MONUMENT PK/W

~~ON SURFACE~~ - ~~BELOW~~ surface

~~LEFT~~ ~~PAV'T.~~ - ~~RIGHT~~ 0.6 Rt of R

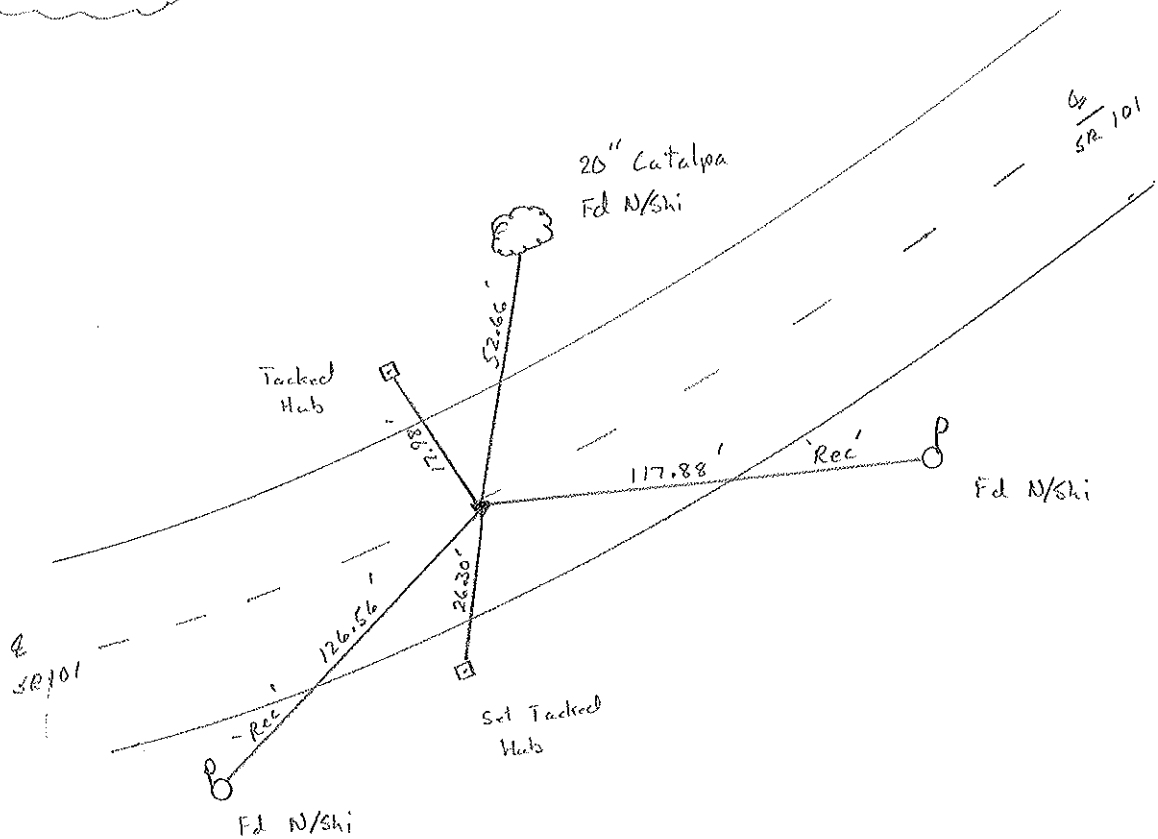
9.2 TO Rt. EDGE PAVEMENT

S.L.M. 10 + 218 SCK



Record: 129+58.57
 PI A = 01°-28'-00" Rt
 PK/W over R.R. spk
 10-14-87 Cronin

Set PK/W
 8-21-97 SAH



O.D.O.T. DISTRICT 2 SURVEY OFFICE

PERSONNEL _____

REFERENCE NO. _____

SHEET 7 OF _____

NOTES Cronin

H.C. Ripple

R.C. Geyman

DATE 10/14/87

WEATHER sunny

TEMP. 62°

ROUTE #101

COUNTY Sandusky

TOWNSHIP York

SECTION 8

T 4 N R 17 E

TYPE MONUMENT P.K. washer

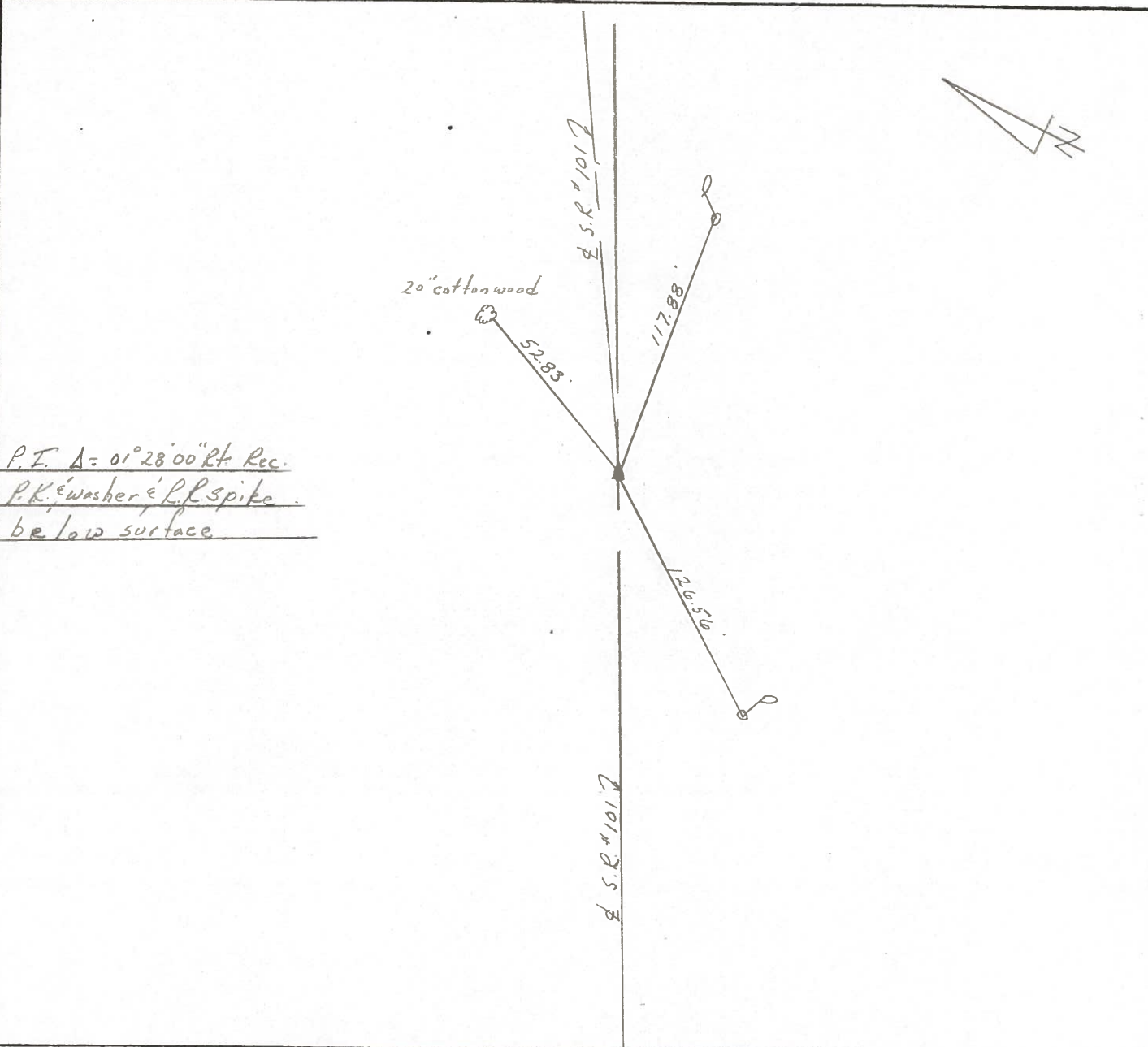
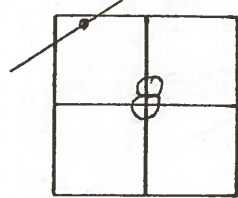
ON SURFACE - BELOW below surface

LEFT- & PAV'T. - RIGHT 1' Rt. & Pav't.

TO _____ EDGE PAVEMENT

S.L.M. old Sta. 129+58.57

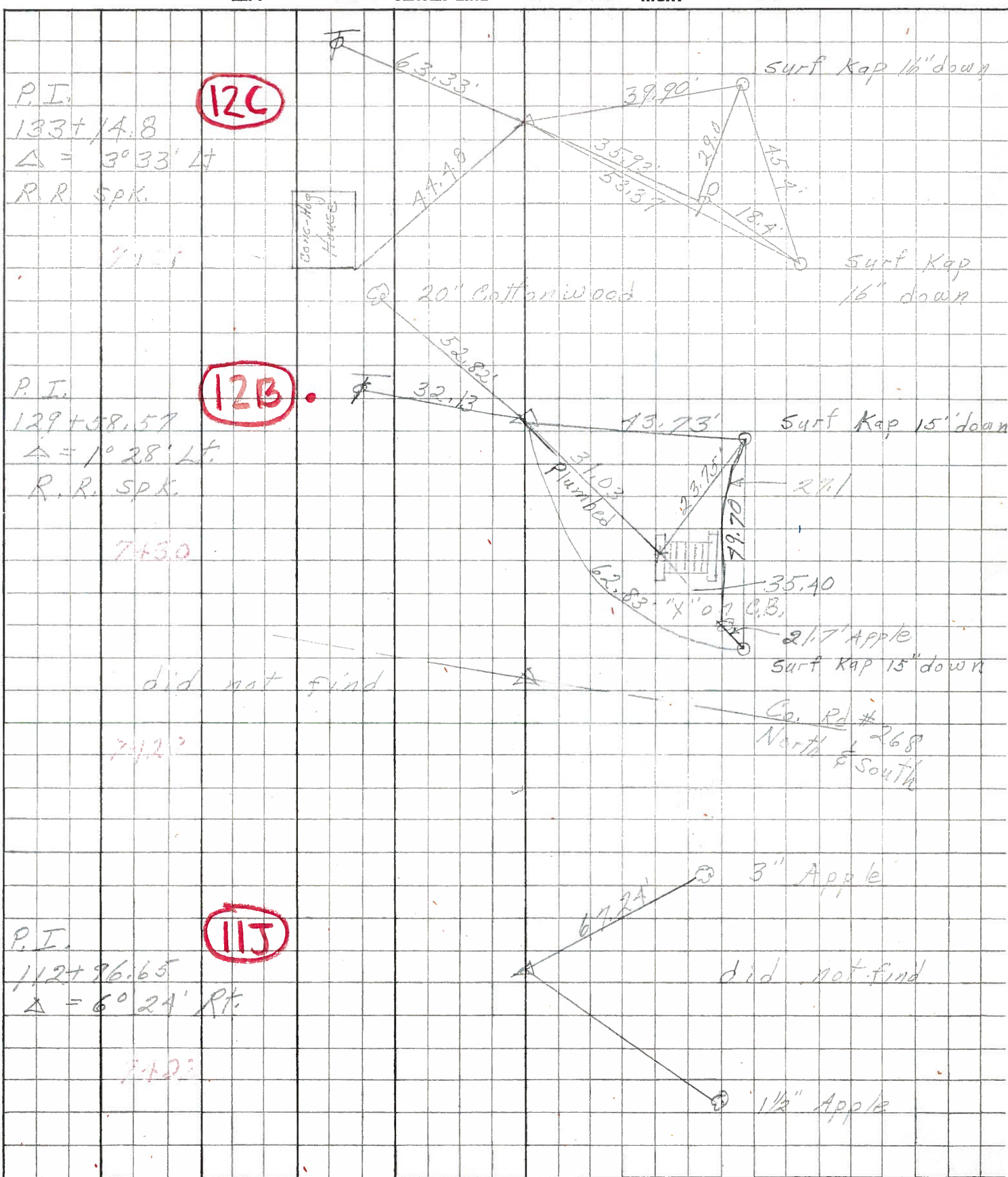
12B



P.E. Δ = 01° 28' 00" Rt. Rec.
P.K. washer & R.P. spike
below surface

PERSONNEL	TITLE	PERSONNEL	TITLE	COUNTY	DATE	WEATHER	TEMP.
Schneider		Potts		Sandusky	4-9-68	Windy	60°
Mosser				S. R. 101			
Barbour				SEC. N.E. of Glyde			
Reading							

DESCRIPTION: Ties for Control Points



PERSONNEL TITLE PERSONNEL TITLE

KrabiLL
Kowaleski
Geyman
Bruggeman

COUNTY Sandusky

DATE Feb. 5, 1964

S. R. # 101

WEATHER

SEC.

TEMP.

DESCRIPTION U.S. #20 North to Erie Co. Line

JOB NO.

LEFT

CENTER LINE

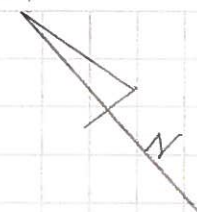
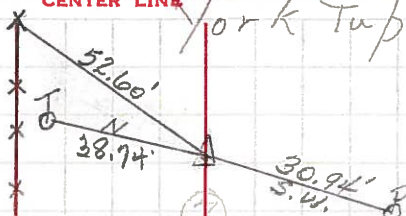
RIGHT

York Twp

Sta. 91+51.08
 $\Delta = 4^{\circ} - 14' \text{ Lt.}$
R.R. Spike 2-5-64

11E

5



Sta. 102+00.9
 $\Delta = 8^{\circ} - 05' \text{ Lt.}$
R.R. Spike 2-5-64

11H

6



Sta. 112+96.65
 $\Delta = 6^{\circ} - 24' \text{ Rt.}$
2-5-64

11J

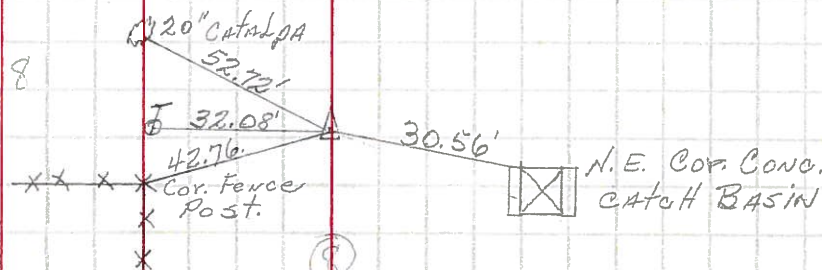
7

Did not Find 2-5-64

Sta. 129+58.57
 $\Delta = 1^{\circ} - 28' \text{ Lt.}$
R.R. Spike 2-5-64

12B

8



Sta. 133+14.8
 $\Delta = 3^{\circ} - 33' \text{ Lt.}$
R.R. Spike 2-5-64

12C

9

